

Submit to Appropriate
District Office
State Lease - 4 copies
Federal Lease - 3 copies

State of New Mexico
Energy, Minerals and Natural Resources Department

Form C-102
Revised 1-1-89

OIL CONSERVATION DIVISION

P.O. Box 2088
Santa Fe, New Mexico 87504-2088

Exhibit# 2
Cochise "1" Federal No. 4
Lea County, New Mexico

DISTRICT I
1001 Hwy 1980, Hobbs, NM 88240

DISTRICT II
1001 Drawer DD, Artesia, NM 88210

DISTRICT III
1001 Rio Brazos Rd., Aztec, NM 87410

WELL LOCATION AND ACREAGE DEDICATION PLAT

All Distances must be from the outer boundaries of the section

MITCHELL ENERGY Corporation			Lease COCHISE 1 - FEDERAL		Well No. #4
Section 1	Township 19S.	Range 32E.	County LEA		
Actual Footage Location of Well: 2310 feet from the SOUTH line and 990 feet from the WEST line					
Ground level Elev. 3690	Producing Formation Yates	Pool Buffalo (Yates)	Dedicated Acreage 40 Acres		

1. Outline the acreage dedicated to the subject well by colored pencil or hatchure marks on the plat below.

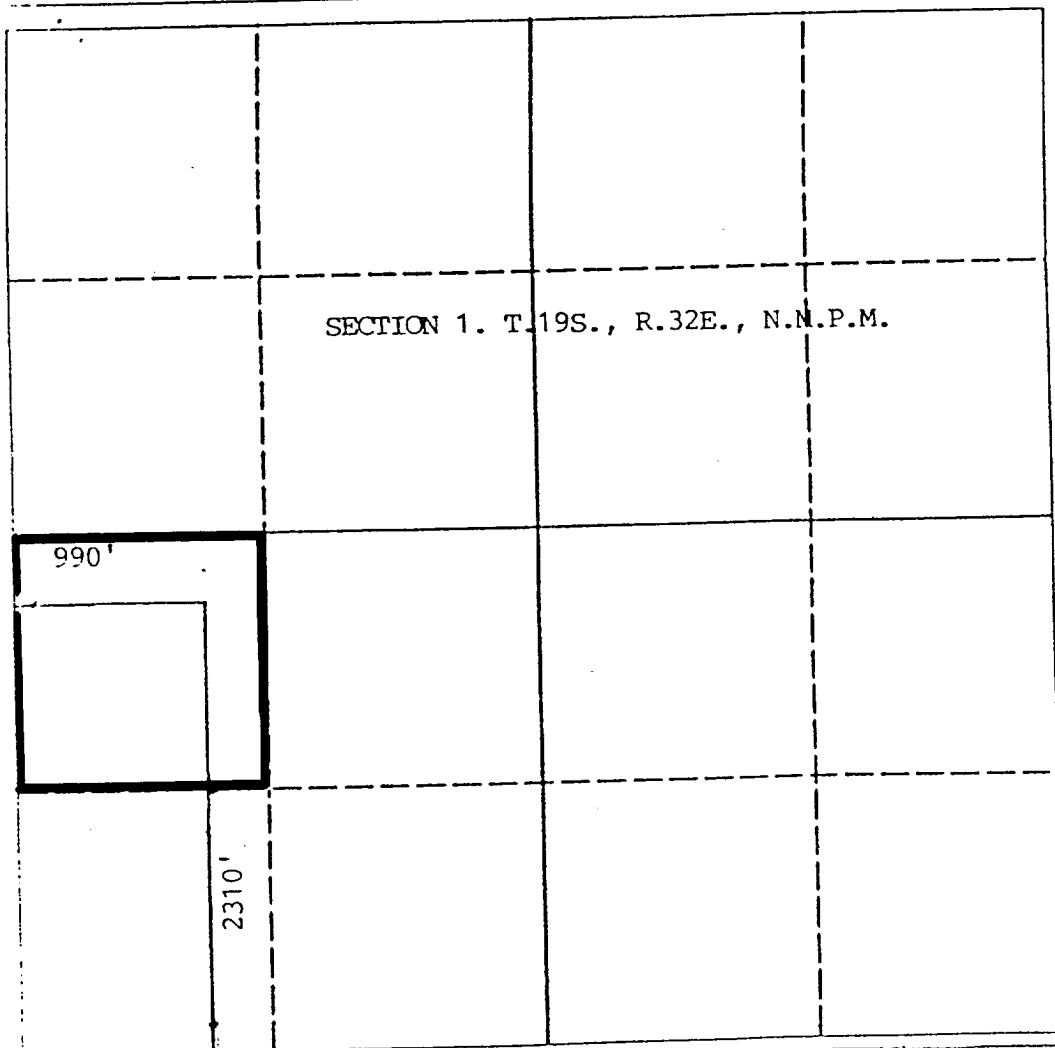
2. If more than one lease is dedicated to the well, outline each and identify the ownership thereof (both as to working interest and royalty).

3. If more than one lease of different ownership is dedicated to the well, have the interest of all owners been consolidated by communitization, unitization, force-pooling, etc.?

☐ Yes ☐ No If answer is "yes" type of consolidation

If answer is "no" list the owners and tract descriptions which have actually been consolidated. (Use reverse side of this form if necessary.)

No allowable will be assigned to the well until all interests have been consolidated (by communitization, unitization, forced-pooling, or otherwise) or until a non-standard unit, eliminating such interest, has been approved by the Division.



OPERATOR CERTIFICATION

I hereby certify that the information contained herein is true and complete to the best of my knowledge and belief.

Signature *George Mullen*

Printed Name
George Mullen

Position
Reg. Affairs Specialist

Company
Mitchell Energy Corp.

Date
May 22, 1992

SURVEYOR CERTIFICATION

I hereby certify that the well location shown on this plat was plotted from field notes of actual surveys made by me or under my supervision, and that the same is true and correct to the best of my knowledge and belief.

Date Surveyed

5/11/92 D. JAQUES

Signature & Seal of Professional Surveyor

NO. 6290
6290 PROFESSIONAL ENGINEER

DC-S1-19-32.CR5

NOV 8-3-92

ELF

RECEIVED

JUN 27 1992

U.S. DEPARTMENT OF JUSTICE