

Submit to Appropriate
District Office
State Lease - 4 copies
Fee Lease - 3 copies

State of New Mexico
Energy, Minerals and Natural Resources Department

Form C-102
Revised 1-1-89

OIL CONSERVATION DIVISION

P.O. Box 2088

Santa Fe, New Mexico 87504-2088

DISTRICT I

P.O. Box 1960, Hobbs, NM 88240

DISTRICT II

P.O. Drawer DD, Artesia, NM 88210

DISTRICT III

1000 Rio Branos Rd., Artesia, NM 87410

WELL LOCATION AND ACREAGE DEDICATION PLAT

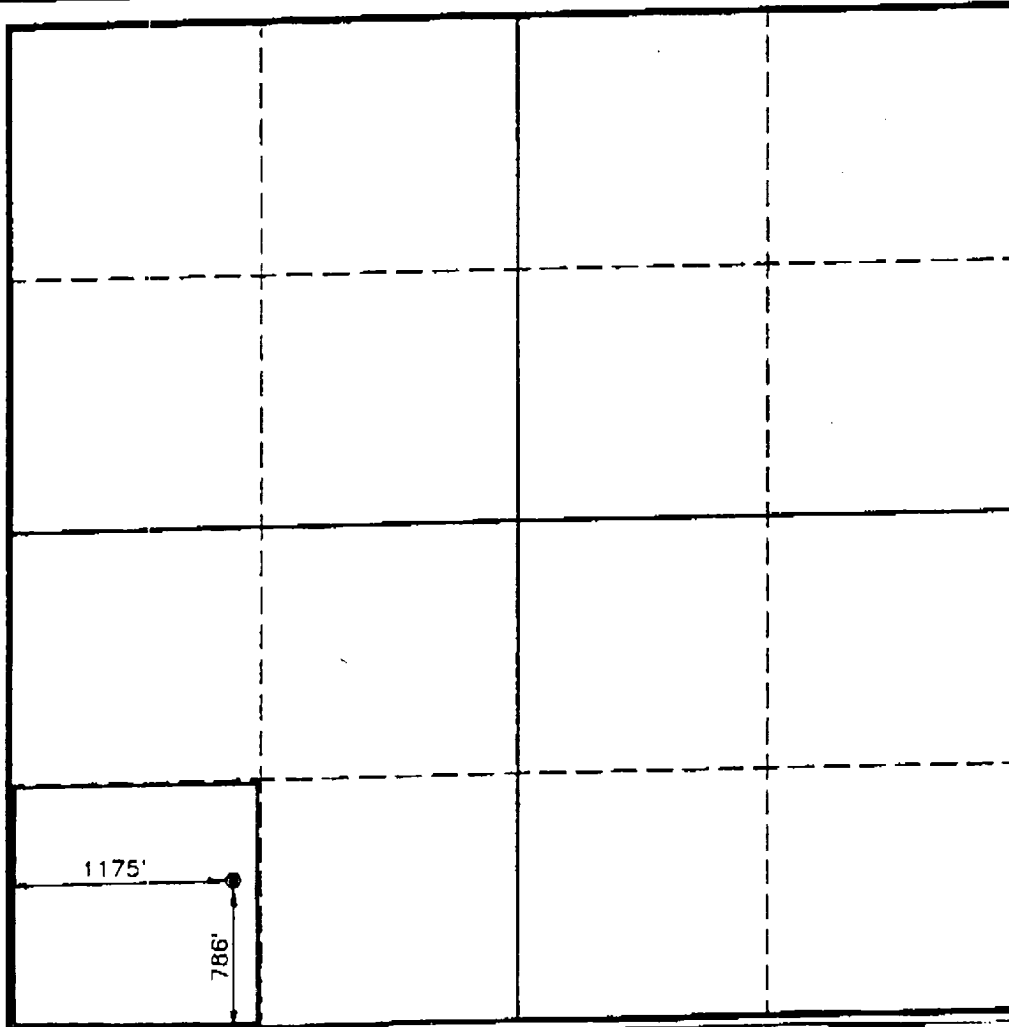
All Distances must be from the outer boundaries of the section

Operator SHELL WESTERN E. & P. INC.		Lease NORTH HOBBS (G/SA) UNIT SEC. 32		Well No. 144
Unit Letter M	Section 32	Township 18-SOUTH	Range 38-EAST	County LEA
Actual Footage Location of Well: 1175 feet from the WEST line and 786 feet from the SOUTH line				
Ground Level Elev. 3627.4	Producing Formation SAN ANDRES	Pool HOBBS (G/SA)	Dedicated Acreage: 40 Acres	

- Outline the acreage dedicated to the subject well by colored pencil or hatchure marks on the plat below.
- If more than one lease is dedicated to the well, outline each and identify the ownership thereof (both as to working interest and royalty).
- If more than one lease of different ownership is dedicated to the well, have the interest of all owners been consolidated by communitization, unitization, force-pooling, etc?
☒ Yes ☐ No If answer is "yes" type of consolidation UNITIZATION

If answer is "no" list of owners and tract descriptions which have actually been consolidated. (Use reverse side of this form necessary.)

No allowable will be assigned to the well unit all interests have been consolidated (by communitization, unitization, forced-pooling, otherwise) or until a non-standard unit, eliminating such interest, has been approved by the Division.



OPERATOR CERTIFICATION

I hereby certify the the information contained herein is true and complete to the best of my knowledge and belief.

Signature

Printed Name

J. L. MORRIS

Position

TECH. MGR. - ASSET ADMIN.

Company

SHELL WESTERN E&P INC.

Date

4/26/93

SURVEYOR CERTIFICATION

I hereby certify that the well location shown on this plat was plotted from field notes of actual surveys made by me or under my supervision, and that the same is true and correct to the best of my knowledge and belief.

Date Surveyed

OCTOBER 22, 1992

Signature & Seal of Professional Surveyor

GARY L. JONES
NEW MEXICO
Professional Surveyor
92-11-1601