

OIL CONSERVATION DIVISION

P.O. Box 2088
Santa Fe, New Mexico 87504-2088

DISTRICT I
P.O. Box 1980, Hobbs, NM 88240

DISTRICT II
P.O. Drawer DD, Artesia, NM 88210

DISTRICT III
1000 Rio Brazos Rd., Aztec, NM 87410

WELL LOCATION AND ACREAGE DEDICATION PLAT

All Distances must be from the outer boundaries of the section

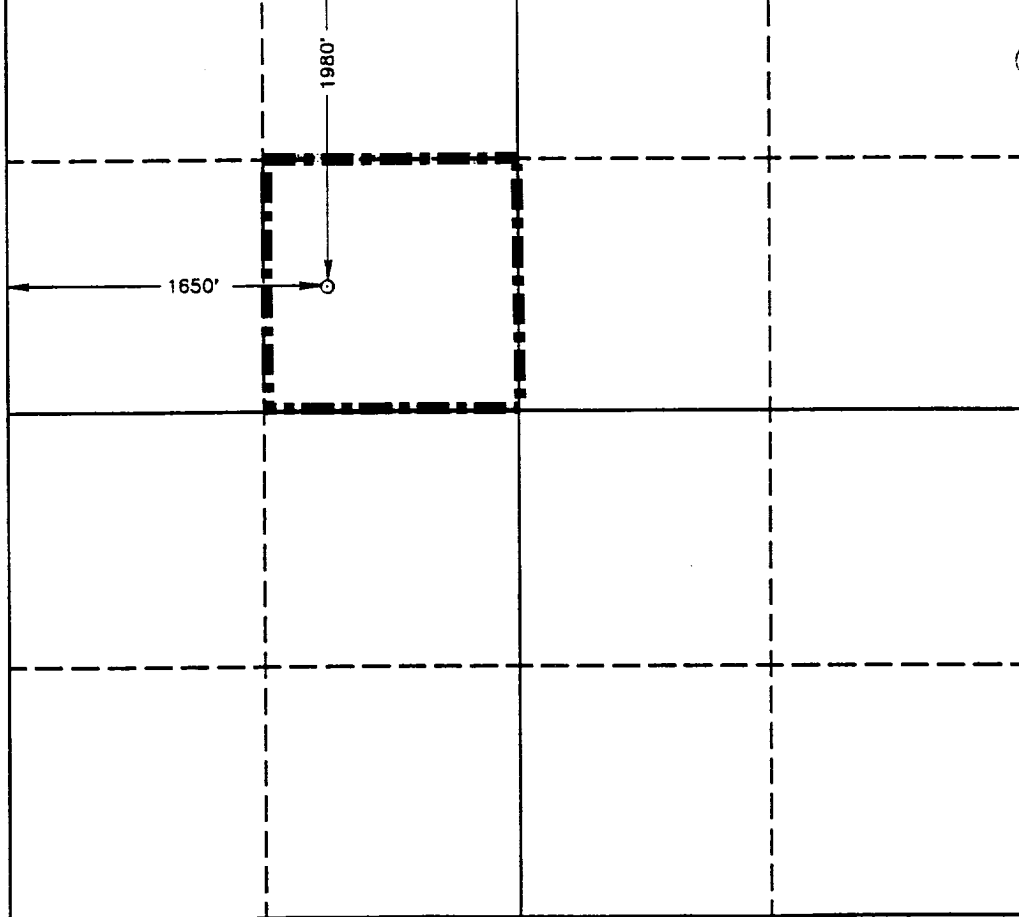
Operator SANTA FE ENERGY RESOURCES <i>Operating Partners, L.P.</i>			Well No. 1	
Unit Letter F	Section 32	Township 18 SOUTH	Range 32 EAST NMPM	County LEA
Actual Footage Location of Well: 1980 feet from the NORTH line and 1650 feet from the WEST line				
Ground Level Elev. 3701.6'	Producing Formation Bone Spring	Pool North Lusk (Bone Spring)	Dedicated Acreage: 40 Acres	

- Outline the acreage dedicated to the subject well by colored pencil or hatchure marks on the plat below.
- If more than one lease is dedicated to the well, outline each and identify the ownership thereof (both as to working interest and royalty).
- If more than one lease of different ownership is dedicated to the well, have the interest of all owners been consolidated by communitization, unitization, force-pooling, etc.?
☐ Yes ☐ No If answer is "yes" type of consolidation _____

If answer is "no" list of owners and tract descriptions which have actually been consolidated. (Use reverse side of this form necessary.)

No allowable will be assigned to the well unit all interests have been consolidated (by communitization, unitization, forced-pooling, otherwise) or until a non-standard unit, eliminating such interest, has been approved by the Division.

State of N.M. - LG 7655
SFEOP, LP - 87.5% WI* See Back for Details
State of New Mexico - 12.5% RI



OPERATOR CERTIFICATION

I hereby certify the the information contained herein is true and complete to the best of my knowledge and belief.

Signature
Terry McCullough
Printed Name
Terry McCullough
Position
Sr. Production Clerk
Company
Santa Fe Energy
Operating Partners, L.P.
Date
April 6, 1993

SURVEYOR CERTIFICATION

I hereby certify that the well location shown on this plat was plotted from field notes of actual surveys made by me or under my supervision, and that the same is true and correct to the best of my knowledge and belief.

Date Surveyed
AUGUST 7, 1992

Signature & Seal of
Professional Surveyor

REGISTERED LAND SURVEYOR
No. 7237
JOHN K. WEST 676
RONALD E. EDSON 3238
RONALD E. EDSON 7977
1992

Lse LG-7655

S.F.E.O.P., L.P. W.I. 87.5 1,2

1 surface to 100 feet below the deepest depth drilled in the Max State No.1 Well, this interest subject to a 1.11607142% interest in the operating rights owned by Richard Rogers to .83705357% of production, and will vest after payout of the Max State No.1 Well

2 This interest must bear overriding royalty interests aggregating 7.25% of production from the NW/4 of Section 32.

Suzanne Coleman, Trustee	1.00%
Dorman Shockley	.25%
William E. Laroche	1.50%
John D. Davis	.75%
Murco Drilling Corporation	.75%
The heirs or devisees of Charles H. Coldwell	1.50%
James B. Shirreff	1.50%

RECEIVED

APR 0 8 1993

OGD HOBBS OFFICE