

OIL CONSERVATION DIVISION

P.O. Box 2088  
Santa Fe, New Mexico 87504-2088

DISTRICT I  
P.O. Box 1980, Hobbs, NM 88240

DISTRICT II  
P.O. Drawer DD, Artesia, NM 88210

DISTRICT III  
1000 Rio Brazos Rd., Aztec, NM 87410

WELL LOCATION AND ACREAGE DEDICATION PLAT

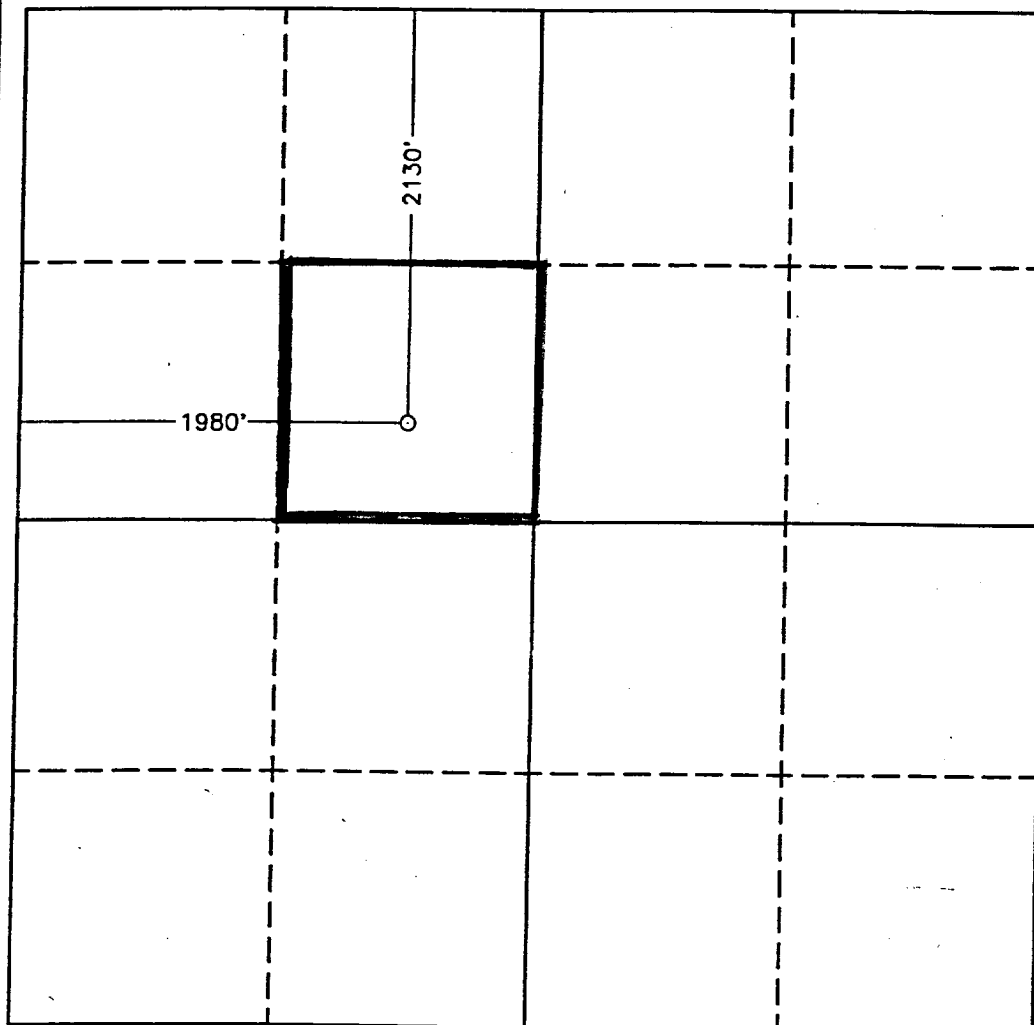
All Distances must be from the outer boundaries of the section

Operator MARALO, INC.			Lease BONDURANT 2 STATE		Well No. 1
Unit Letter F	Section 2	Township 19 SOUTH	Range 32 EAST	NMPM	County LEA
Actual Footage Location of Well: 2130 feet from the NORTH line and 1980 feet from the WEST line					
Ground Level Elev. 3694.0'	Producing Formation Yates		Pool Buffalo Yates		Dedicated Acreage: 40 Acres

- Outline the acreage dedicated to the subject well by colored pencil or hatchure marks on the plat below.
- If more than one lease is dedicated to the well, outline each and identify the ownership thereof (both as to working interest and royalty).
- If more than one lease of different ownership is dedicated to the well, have the interest of all owners been consolidated by communitization, unitization, force-pooling, etc?  
☐ Yes ☐ No If answer is "yes" type of consolidation \_\_\_\_\_

If answer is "no" list of owners and tract descriptions which have actually been consolidated. (Use reverse side of this form necessary.)

No allowable will be assigned to the well unit all interests have been consolidated (by communitization, unitization, forced-pooling, otherwise) or until a non-standard unit, eliminating such interest, has been approved by the Division.



OPERATOR CERTIFICATION

I hereby certify that the information contained herein is true and complete to the best of my knowledge and belief.

*Dorothea Owens*

Signature

Dorothea Owens

Printed Name

Agent

Position

Maralo, Inc.

Company

December 16, 1992

Date

SURVEYOR CERTIFICATION

I hereby certify that the well location shown on this plat was plotted from field notes of actual surveys made by me or under my supervision, and that the same is true and correct to the best of my knowledge and belief.

Date Surveyed

OCTOBER 12, 1992

Signature & Seal of  
Professional Surveyor

*Gary L. Jones*  
GARY L. JONES  
NEW MEXICO  
CERTIFIED PROFESSIONAL SURVEYOR  
7977  
Certificate No. JOHN W. WEBB, 876  
RONALD J. EDSON, 8280  
GARY L. JONES, 7977  
92-11-1634

Amended