

DEPARTMENT OF THE INTERIOR
BUREAU OF LAND MANAGEMENT

5. LEASE DESIGNATION AND SERIAL NO. <i>NM-0797</i> <i>LG-004974</i>
6. IF INDIAN, ALLOTTEE OR TRIBE NAME NA
7. UNIT AGREEMENT NAME
8. FARM OR LEASE NAME FEDERAL MA #9
9. WELL NO. NO ASSIGNED YET
10. FIELD AND POOL, OR WILDCAT SOUTH CORBIN WOLFCAMP
11. SEC., T., R., M., OR BLK. AND SURVEY OR AREA 21, T18S, R33E
12. COUNTY OR PARISH LEA
13. STATE NM

APPLICATION FOR PERMIT TO DRILL, DEEPEN, OR PLUG BACK

1a. TYPE OF WORK DRILL <input checked="" type="checkbox"/> DEEPEN <input type="checkbox"/> PLUG BACK <input type="checkbox"/>
b. TYPE OF WELL OIL WELL <input checked="" type="checkbox"/> GAS WELL <input type="checkbox"/> OTHER <input type="checkbox"/>
2. NAME OF OPERATOR SOUTHLAND ROYALTY COMPANY
3a. AREA CODE & PHONE NO.
3. ADDRESS OF OPERATOR P.O. Box 51810, Midland, TX 79710-1810
4. LOCATION OF WELL (Report location clearly and in accordance with any State requirements.) At surface <i>2080'</i> J, 1980' FSL & <i>1980'</i> FWL <i>FEL</i> At proposed prod. zone

14. DISTANCE IN MILES AND DIRECTION FROM NEAREST TOWN OR POST OFFICE* 7 MILES SE FROM MALJAMAR, NM
15. DISTANCE FROM PROPOSED* LOCATION TO NEAREST PROPERTY OR LEASE LINE, FT. (Also to nearest drlg. unit line, if any) 660' FWL OF FED.21-2
16. NO. OF ACRES IN LEASE 960'
17. NO. OF ACRES ASSIGNED TO THIS WELL 80
18. DISTANCE FROM PROPOSED LOCATION* TO NEAREST WELL, DRILLING, COMPLETED, OR APPLIED FOR, ON THIS LEASE, FT. 1320' S FED. 21
19. PROPOSED DEPTH 11650
20. ROTARY OR CABLE TOOLS ROTARY

21. ELEVATIONS (Show Whether DF, RT, GR, ETC.) 3829.5 GR
22. APPROX. DATE WORK WILL START* 10/1/92

23. PROPOSED CASING AND CEMENTING PROGRAM

HOLE SIZE	CASING SIZE	WEIGHT/FOOT	GRADE	THREAD TYPE	SETTING DEPTH	QUANTITY OF CEMENT
17 1/2"	H-40, 13 3/8	48#			400'	425 SXS CIRC
12 1/4"	K, 55, 8 5/8"	28#			2900'	1200 SXS CIRC
7 7/8"	K-55&N80, 5 1/2"	17#			11,550'	2100 SXS TOC@2700'

MUD PROGRAM: 0-*400'* SPUD MUD, *400'* - 2900' BRINE, 2900'-10,700' CUT
BRINE AND SWEEPS (CHLORIDE 30,000+), 10700 - TD CUT BRINE AND DRISPC. MW
9.0-9.2 (SOLID MUST BE LESS THAN 5% W/VIS 32-36).

IN ABOVE SPACE DESCRIBE PROPOSED PROGRAM: If proposal is to deepen or plug back, give data on present productive zone and proposed new productive zone.
If proposal is to drill or deepen directionally, give pertinent data on subsurface locations and measured and true vertical depths. Give blowout preventer program,
if any.

24. SIGNED <i>C. Kirk Thompson</i>	TITLE <i>PROJ. ASST.</i>	DATE <i>9/15/92</i>
(This space for Federal or State office use)		

PERMIT NO. _____	APPROVAL DATE _____
APPROVED BY _____	TITLE _____
CONDITIONS OF APPROVAL, IF ANY: APPROVAL SUBJECT TO GENERAL REQUIREMENTS AND SPECIAL STIPULATIONS	

*See Instructions On Reverse Side

Submit to Appropriate
District Office
State Lease - 4 copies
Fee Lease - 3 copies

State of New Mexico
Energy, Minerals and Natural Resources Department

Form C-102
Revised 1-1-89

OIL CONSERVATION DIVISION

P.O. Box 2088
Santa Fe, New Mexico 87504-2088

AMENDED

DISTRICT I

P.O. Box 1980, Hobbs, NM 88240

DISTRICT II

P.O. Drawer DD, Artesia, NM 88210

DISTRICT III

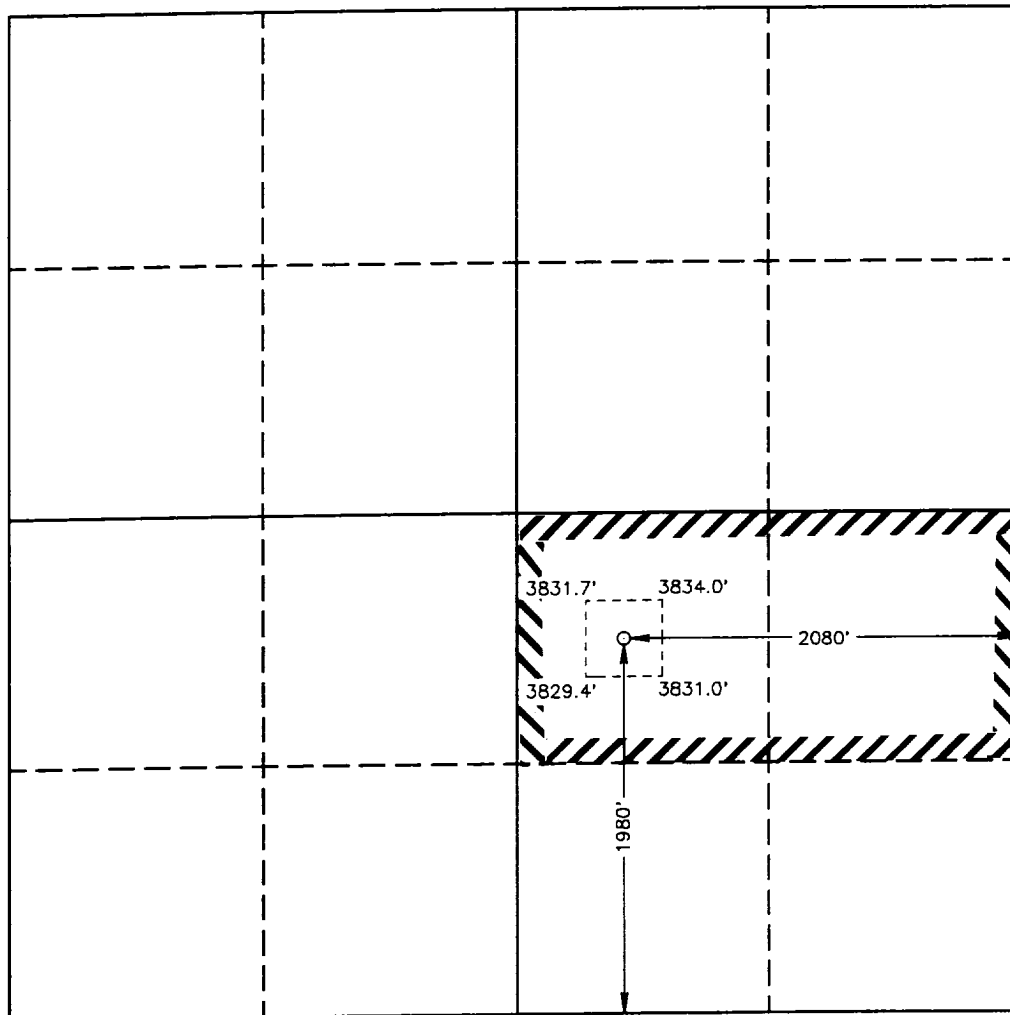
1000 Rio Brazos Rd., Aztec, NM 87410

WELL LOCATION AND ACREAGE DEDICATION PLAT

All Distances must be from the outer boundaries of the section

Operator MERIDIAN OIL INC.		Lease FEDERAL MA		Well No. 9
Unit Letter J	Section 21	Township 18 SOUTH	Range 33 EAST NMPM	County LEA
Actual Footage Location of Well: 1980 feet from the SOUTH line and 2080 feet from the EAST line				
Ground Level Elev. 3830.5'	Producing Formation WOLFCAMP	Pool SOUTH CORBIN WOLFCAMP	Dedicated Acreage: 80 Acres	

1. Outline the acreage dedicated to the subject well by colored pencil or hachure marks on the plat below.
 2. If more than one lease is dedicated to the well, outline each and identify the ownership thereof (both as to working interest and royalty).
 3. If more than one lease of different ownership is dedicated to the well, have the interest of all owners been consolidated by communitization, unitization, force-pooling, etc.?
☐ Yes ☐ No If answer is "yes" type of consolidation _____
- If answer is "no" list of owners and tract descriptions which have actually been consolidated. (Use reverse side of this form necessary.)
No allowable will be assigned to the well unit all interests have been consolidated (by communitization, unitization, forced-pooling, otherwise) or until a non-standard unit, eliminating such interest, has been approved by the Division.



OPERATOR CERTIFICATION

I hereby certify the the information contained herein is true and complete to the best of my knowledge and belief.

Signature

Printed Name

MARIA L. PEREZ

Position

PRODUCTION ASST.

Company

MERIDIAN OIL INC.

Date

10-2-92

SURVEYOR CERTIFICATION

I hereby certify that the well location shown on this plat was plotted from field notes of actual surveys made by me or under my supervision, and that the same is true and correct to the best of my knowledge and belief.

Date Surveyed

SEPTEMBER 25, 1992

Signature & Seal of
Professional Surveyor

GARY L. JONES
NEW MEXICO
RECEIVED
1992
Certificate No. JOHN WEST, 676
RONALD MIDSON, 3239
GARY L. JONES, 7977

92-11-1252

OPERATORS NAME:	SOUTHLAND ROYALTY CO.
LEASE NAME AND WELL NO.:	FEDERAL "MA" NO. 9
LOCATION:	1980' FSL AND 1980' FWL, UNIT J, SEC. 21, T18S, R33E
FIELD NAME:	SOUTH CORBIN WOLFCAMP
COUNTY:	LEA COUNTY, NEW MEXICO
LEASE NUMBER:	LC-064944

The following information is to supplement BLM form 3160-3 Application for permit to drill in accordance with Onshore Oil and Gas Order No. 1:

9 - POINT DRILLING PLAN

1. Name and estimated tops of important geologic formation/marker horizons.

Rustler	1,420'	1st Bone Spring Sand	8,370'
Yates	2,915'	2nd Bone Spring Sand	8,825'
San Andres	5,110'	Wolfcamp	11,000'
Delaware	5,200'	Lower Wolfcamp	11,050'
Bone Spring	7,500'		

2. Estimated depths at which the top and bottom of formations potentially containing usable water, oil, gas, or prospectively valuable deposits of other minerals are expected to be encountered and the operator's plans for protecting such resources.

Delaware 5200 - 7500' - Oil - Will be behind pipe and protected with adequate cement.

1st Bone Spring Sand 8370' - 8825' - Oil - Will be behind pipe and protected with adequate cement.

Wolfcamp 11050' - TD - Oil will be perforated and tested.

3. The operator's minimum specifications for Blowout Preventer (BOP) and related equipment to be used and schematic diagrams thereof showing sizes, pressure ratings, and the testing procedures and testing frequency. BOP and BOP - related equipment (BOPD) schematics shall include schematics of choke manifold equipment. Accumulator systems and remote controls shall be utilized.

BLOWOUT PREVENTION EQUIPMENT
 10" 900s ALL FLANGED EQUIPMENT
 5,000# WORKING PRESSURE - 10,000# TEST

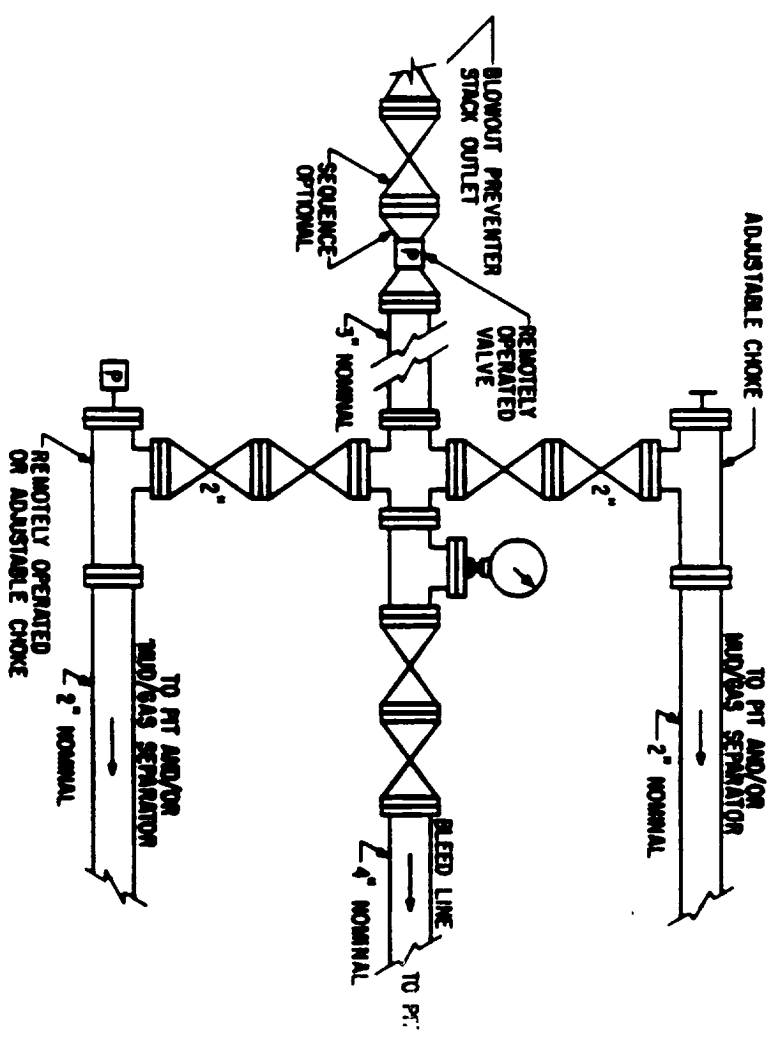
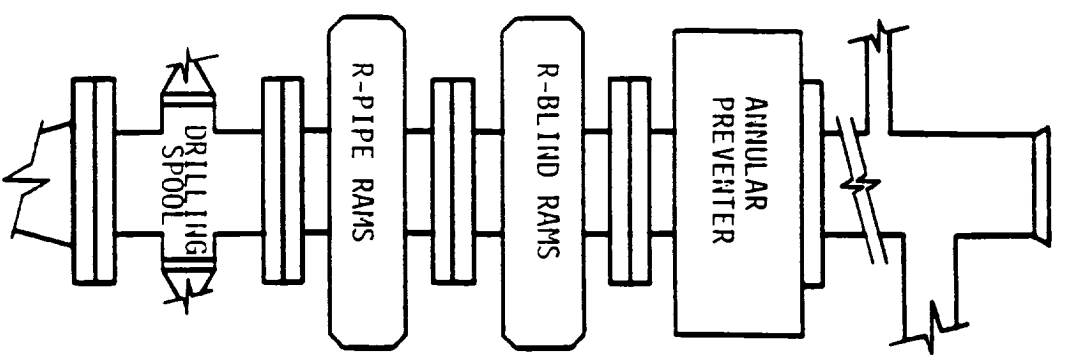


FIG. 3.A.2

TYPICAL CHOKE MANIFOLD ASSEMBLY FOR 6M
 RATED WORKING PRESSURE SERVICE --
 SURFACE INSTALLATION