

Submit to Appropriate
District Office
State Lease - 6 copies
Fee Lease - 5 copies

State of New Mexico
Energy, Minerals and Natural Resources Department

Form C-101
Revised 1-1-89

OIL CONSERVATION DIVISION

DISTRICT I
P.O. Box 1980, Hobbs, NM 88240

DISTRICT II
P.O. Drawer DD, Artesia, NM 88210

DISTRICT III
1000 Rio Brazos Rd., Aztec, NM 87410

P.O. Box 2088
Santa Fe, New Mexico 87504-2088

API NO. (assigned by OCD on New Wells)

30-025-31823

5. Indicate Type of Lease

STATE ☒ FEE ☐

6. State Oil & Gas Lease No.

L-6691

APPLICATION FOR PERMIT TO DRILL, DEEPEN, OR PLUG BACK

1a. Type of Work:

DRILL ☒ RE-ENTER ☐ DEEPEN ☐ PLUG BACK ☐

b. Type of Well:

OIL WELL ☒ GAS WELL ☐ OTHER ☐

SINGLE ZONE ☒ MULTIPLE ZONE ☐

7. Lease Name or Unit Agreement Name

State "HH"

2. Name of Operator

Union Oil Company of California

8. Well No.

2

3. Address of Operator

P. O. Box 671 - Midland, TX 79702

9. Pool name or Wildcat

Geronimo (Delaware)

4. Well Location

Unit Letter A : 660 Feet From The north Line and 660 Feet From The east Line

Section 36 Township 19-S Range 32-E NMPM Lea County

10. Proposed Depth

8200'

11. Formation

Delaware

12. Rotary or C.T.

Rotary

13. Elevations (Show whether DF, RT, GR, etc.)

3372.7' GR

14. Kind & Status Plug. Bond

Blanket

15. Drilling Contractor

Unknown

16. Approx. Date Work will start

ASAP

17. PROPOSED CASING AND CEMENT PROGRAM

SIZE OF HOLE	SIZE OF CASING	WEIGHT PER FOOT	SETTING DEPTH	SACKS OF CEMENT	EST. TOP
17 1/2"	13 3/8"	48#	450'	475 sxs	Surface
12 1/4"	9 5/8"	40#	5100'	1500 sxs	Surface
8 3/4"	5 1/2"	17#	8200'	3550 sxs	Surface

3000# Hydraulic BOP to Intermediate Casing

5000# Hydraulic BOP to Total Depth

IN ABOVE SPACE DESCRIBE PROPOSED PROGRAM: IF PROPOSAL IS TO DEEPEN OR PLUG BACK, GIVE DATA ON PRESENT PRODUCTIVE ZONE AND PROPOSED NEW PRODUCTIVE ZONE. GIVE BLOWOUT PREVENTER PROGRAM, IF ANY.

I hereby certify that the information above is true and complete to the best of my knowledge and belief.

SIGNATURE

Charlotte Beeson

TITLE

Drilling Clerk

DATE

11-17-92

TYPE OR PRINT NAME

Charlotte Beeson

TELEPHONE NO. (915) 682-9731

(This space for State Use)

ORIGINAL SIGNED BY JERRY SEXTON
DISTRICT I SUPERVISOR

NOV 24 '92

APPROVED BY

TITLE

DATE

CONDITIONS OF APPROVAL, IF ANY:

Submit to Appropriate
District Office
State Lease - 4 copies
Fee Lease - 3 copies

State of New Mexico
Energy, Minerals and Natural Resources Department

Form C-102
Revised 1-1-89

OIL CONSERVATION DIVISION

P.O. Box 2088
Santa Fe, New Mexico 87504-2088

DISTRICT I

P.O. Box 1980, Hobbs, NM 88240

DISTRICT II

P.O. Drawer DD, Artesia, NM 88210

DISTRICT III

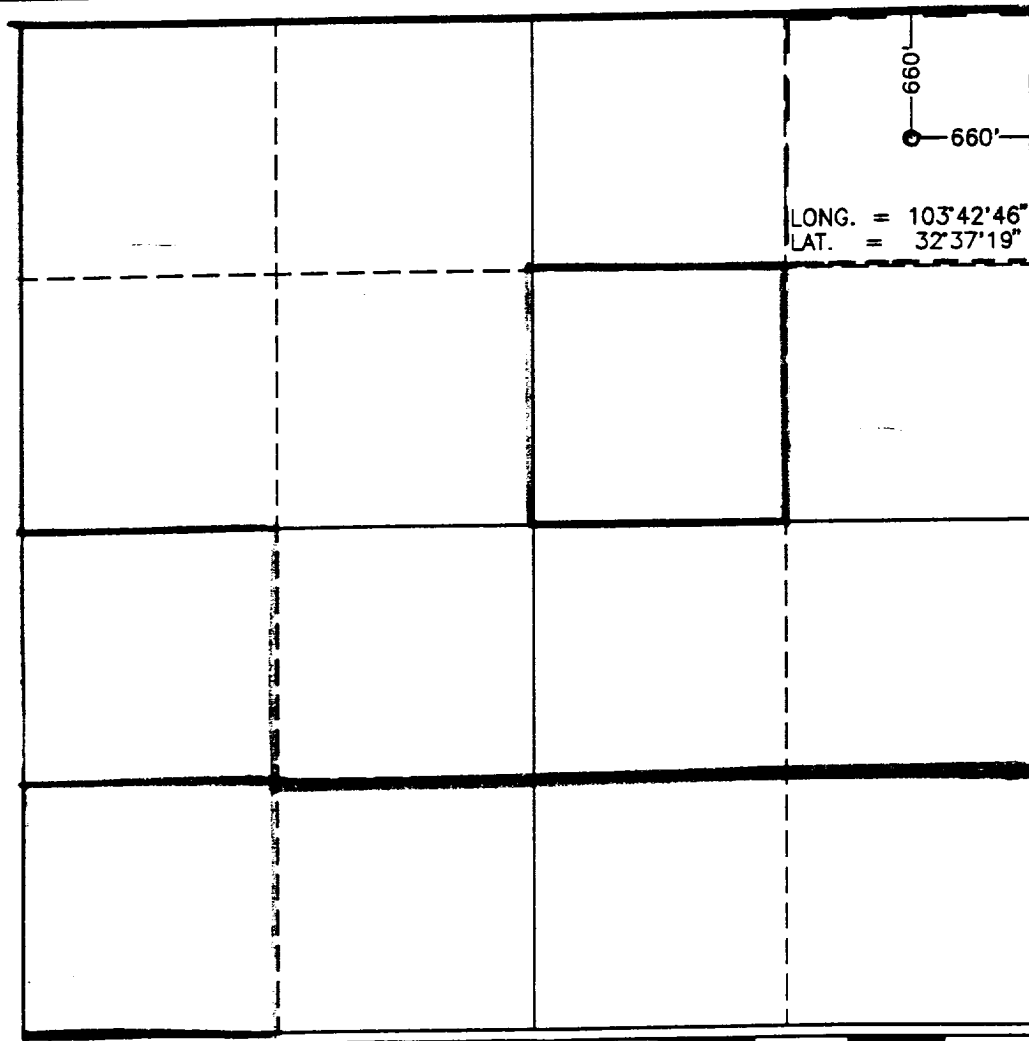
1000 Rio Brazos Rd., Aztec, NM 87410

WELL LOCATION AND ACREAGE DEDICATION PLAT

All Distances must be from the outer boundaries of the section

Operator UNION OIL COMPANY OF CALIFORNIA			Lease STATE "HH"		Well No. 2
Unit Letter A	Section 36	Township 19 SOUTH	Range 32 EAST	NMPM	County LEA
Actual Footage Location of Well: 660 feet from the NORTH line and 660 feet from the EAST line					
Ground Level Elev. 3372.7	Producing Formation DELAWARE		Pool Geronimo		Dedicated Acreage: 40 Acres

1. Outline the acreage dedicated to the subject well by colored pencil or hachure marks on the plat below.
 2. If more than one lease is dedicated to the well, outline each and identify the ownership thereof (both as to working interest and royalty).
 3. If more than one lease of different ownership is dedicated to the well, have the interest of all owners been consolidated by communitization, unitization, force-pooling, etc.?
☐ Yes ☐ No If answer is "yes" type of consolidation _____
- If answer is "no" list of owners and tract descriptions which have actually been consolidated. (Use reverse side of this form necessary. _____)
- No allowable will be assigned to the well unit all interests have been consolidated (by communitization, unitization, forced-pooling, otherwise) or until a non-standard unit, eliminating such interest, has been approved by the Division.



OPERATOR CERTIFICATION

I hereby certify the the information
contained herein is true and complete to the
best of my knowledge and belief.

Signature
Charlotte Beeson
Printed Name
Charlotte Beeson
Position
Drilling Clerk
Company
Union Oil Co. of Calif.
Date
November 17, 1992

SURVEYOR CERTIFICATION

I hereby certify that the well location shown
on this plat was plotted from field notes of
actual surveys made by me or under my
supervision, and that the same is true and
correct to the best of my knowledge and
belief.

Date Surveyed
NOVEMBER 9, 1992
Signature & Seal of
Professional Surveyor

Gayle Jones
Certificate No. JOSEPH WEST 678
RONALD J. BOSON - 8286
GAYLE JONES 7977
92-11-1710

0 330 660 990 1320 1650 1980 2310 2640 2000 1500 1000 500 0