

Submit to Appropriate  
District Office  
State Lease -- 6 copies  
Fee Lease -- 5 copies

State of New Mexico  
Energy, Minerals and Natural Resources Department

Form C-101  
Revised 1-1-89

OIL CONSERVATION DIVISION

DISTRICT I  
P.O. Box 1980, Hobbs, NM 88240

P.O. Box 2088  
Santa Fe, New Mexico 87504-2088

DISTRICT II  
P.O. Drawer DD, Artesia, NM 88210

DISTRICT III  
1000 Rio Brazos Rd., Aztec, NM 87410

API NO. (assigned by OCD on New Wells)

30-025-31878

5. Indicate Type of Lease

STATE ☒

FEE ☐

6. State Oil & Gas Lease No.

B-1113-1

APPLICATION FOR PERMIT TO DRILL, DEEPEN, OR PLUG BACK

1a. Type of Work:

DRILL ☒

RE-ENTER ☐

DEEPEN ☐

PLUG BACK ☐

b. Type of Well:

OIL  
WELL ☐

GAS  
WELL ☐

OTHER WATER INJECTION

SINGLE  
ZONE ☒

MULTIPLE  
ZONE ☐

7. Lease Name or Unit Agreement Name

VACUUM GLORIETA WEST UNIT

2. Name of Operator

TEXACO EXPLORATION AND PRODUCTION INC.

8. Well No.

123

3. Address of Operator

P. O. Box 3109, Midland, Texas 79702

9. Pool name or Wildcat

VACUUM GLORIETA

4. Well Location

Unit Letter C : 1005 Feet From The NORTH Line and 2244 Feet From The WEST Line

Section 6 Township 18-SOUTH Range 35-EAST NMPM LEA County

10. Proposed Depth

6389'

11. Formation

GLORIETA/PADDOCK

12. Rotary or C.T.

ROTARY

13. Elevations (Show whether DF, RT, GR, etc.)

GR-3973'

14. Kind & Status Plug. Bond

BLANKET

15. Drilling Contractor

TMBR/SHARP

16. Approx. Date Work will start

FEBRUARY 15, 1993

17.

PROPOSED CASING AND CEMENT PROGRAM

SIZE OF HOLE	SIZE OF CASING	WEIGHT PER FOOT	SETTING DEPTH	SACKS OF CEMENT	EST. TOP
14 3/4	11 3/4	42#	1550'	840	SURFACE
11	8 5/8	32#	3000'	1000	SURFACE
7 7/8	5 1/2	15.5# & 17#	6389'	1350	SURFACE

CEMENTING PROGRAM:

SURFACE CASING - 560 SX CLASS C w/ 4% GEL & 2% CaCl<sub>2</sub> (13.5ppg, 1.74cf/s, 9.1gw/s). F/B 280 SX CLASS C w/ 2% CaCl<sub>2</sub> (14.8ppg, 1.34cf/s, 6.3gw/s).

INTERMEDIATE CASING - 1st STG: 300 SX 35/65 POZ CLASS H w/ 6% GEL, 5% SLAT, 1/4# FLOCELE (12.8ppg, 1.94cf/s, 10.4gw/s). F/B 200 SACKS CLASS H w/ 2% CaCl<sub>2</sub> (15.6ppg, 1.19cf/s, 5.2gw/s). DV TOOL @ 1580'. 2nd STG: 500 SX CLASS H w/ 2% CaCl<sub>2</sub> (15.6ppg, 1.19cf/s, 5.2gw/s).

PRODUCTION CASING - 1st STG: 350 SX CLASS H (15.6ppg, 1.18cf/s, 5.2gw/s).

DV TOOL @ 5000' - 2nd STG: 900 SX 35/65 POZ CLASS H w/ 6% GEL, 5% SALT & 1/4# FLOCELE (12.8ppg, 1.94cf/s, 10.4gw/s). F/B 100 SX CLASS H (15.6ppg, 1.18cf/s, 5.2gw/s).

THERE ARE NO OTHER OPERATORS IN THIS QUARTER QUARTER SECTION.

UNORTHODOX LOCATION - GRANTED UNDER ORDER No. R-9714. LOCATION WAS MOVED BECAUSE OF A PIPELINE. APPROVAL FOR THE AMENDED LOCATION HAS BEEN APPLIED FOR IN SANTA FE. (COPY ATTACHED)

IN ABOVE SPACE DESCRIBE PROPOSED PROGRAM: IF PROPOSAL IS TO DEEPEN OR PLUG BACK, GIVE DATA ON PRESENT PRODUCTIVE ZONE AND PROPOSED NEW PRODUCTIVE ZONE. GIVE BLOWOUT PREVENTER PROGRAM, IF ANY.

I hereby certify that the information above is true and complete to the best of my knowledge and belief.

SIGNATURE C. P. Basham / cwh TITLE DRILLING OPERATIONS MANAGER DATE 01-14-93

TYPE OR PRINT NAME C. P. BASHAM TELEPHONE NO. (915) 688-4620

(This space for State Use)

ORIGINAL SIGNED BY JERRY SEXTON  
DISTRICT I SUPERVISOR

APPROVED BY \_\_\_\_\_ TITLE \_\_\_\_\_ DATE \_\_\_\_\_

CONDITIONS OF APPROVAL, IF ANY:

R-9714 amended NSL

Permit Expires 6 Months From Approval  
Date Unless Drilling Underway.

FEB 05 1993

# OIL CONSERVATION DIVISION

DISTRICT I  
P.O. Box 1980, Hobbs, NM 88240

P.O. Box 2088

Santa Fe, New Mexico 87504-2088

DISTRICT II  
P.O. Drawer DD, Artesia, NM 88210

DISTRICT III  
1000 Rio Brazos Rd., Aztec, NM 87410

## WELL LOCATION AND ACREAGE DEDICATION PLAT

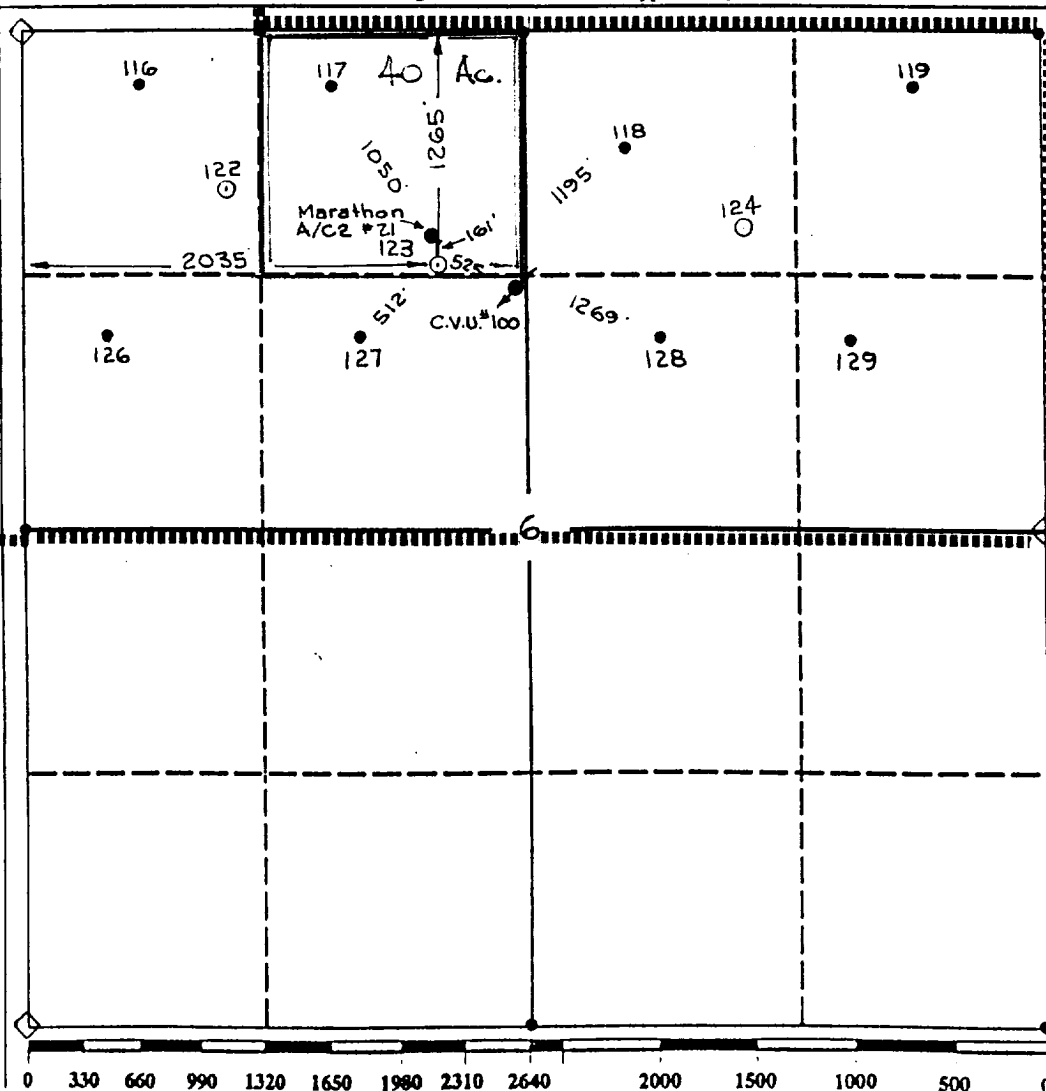
All Distances must be from the outer boundaries of the section

Operator <b>TEXACO EXPL. AND PROD. Inc.</b>			Lease <b>VACUUM GLORIETA WEST UNIT</b>		Well No. <b>123</b>
Unit Letter <b>C</b>	Section <b>6</b>	Township <b>18-South</b>	Range <b>35-East</b>	County <b>Lea</b>	
Actual Footage Location of Well: <b>1265</b> feet from the <b>North</b> line and <b>2035</b> feet from the <b>West</b> line					
Ground level Elev. <b>3975</b>	Producing Formation <b>Glorieta; Paddock</b>		Pool <b>Vacuum Glorieta Pool</b>		Dedicated Acreage: <b>40</b> Acres

1. Outline the acreage dedicated to the subject well by colored pencil or hatchure marks on the plat below.
2. If more than one lease is dedicated to the well, outline each and identify the ownership thereof (both as to working interest and royalty).
3. If more than one lease of different ownership is dedicated to the well, have the interest of all owners been consolidated by communitization, unitization, force-pooling, etc.?  
☒ Yes ☐ No If answer is "yes" type of consolidation Unitization

If answer is "no" list the owners and tract descriptions which have actually been consolidated. (Use reverse side of this form if necessary.)

No allowable will be assigned to the well until all interests have been consolidated (by communitization, unitization, forced-pooling, or otherwise) or until a non-standard unit, eliminating such interest, has been approved by the Division.



### OPERATOR CERTIFICATION

I hereby certify that the information contained herein is true and complete to the best of my knowledge and belief.

Signature Royce D. Mariott  
Printed Name **Royce D. Mariott**  
Position **Division Surveyor**  
Company **Texaco Expl. & Prod.**  
Date **July 28, 1993**

### SURVEYOR CERTIFICATION

I hereby certify that the well location shown on this plat was plotted from field notes of actual surveys made by me or under my supervision, and that the same is true and correct to the best of my knowledge and belief.

Date Surveyed **July 27, 1993**  
Signature & Seal of Professional Surveyor J. S. Piper  
Certificate No. **7254 J. S. Piper**  
**Lea Co. FB. 7, Pg. 75**

# OIL CONSERVATION DIVISION

P.O. Box 2088

Santa Fe, New Mexico 87504-2088

## DISTRICT I

P.O. Box 1980, Hobbs, NM 88240

## DISTRICT II

P.O. Drawer DD, Artesia, NM 88210

## DISTRICT III

1000 Rio Brazos Rd., Aztec, NM 87410

## WELL LOCATION AND ACREAGE DEDICATION PLAT

All Distances must be from the outer boundaries of the section

Operator <b>TEXACO EXPL. AND PROD. Inc.</b>			Lease <b>VACUUM GLORIETA WEST UNIT</b>		Well No. <b>123</b>
Unit Letter <b>C</b>	Section <b>6</b>	Township <b>18-South</b>	Range <b>35-East</b>	County <b>NMPM Lea</b>	
Actual Footage Location of Well: <b>1005</b> feet from the <b>North</b> line and <b>2244</b> feet from the <b>West</b> line					
Ground level Elev. <b>3973</b>	Producing Formation <b>Glorieta; Paddock</b>		Pool <b>Vacuum Glorieta Pool</b>		Dedicated Acreage: <b>40</b> Acres

1. Outline the acreage dedicated to the subject well by colored pencil or hatchure marks on the plat below.

2. If more than one lease is dedicated to the well, outline each and identify the ownership thereof (both as to working interest and royalty).

3. If more than one lease of different ownership is dedicated to the well, have the interest of all owners been consolidated by communitization, unitization, force-pooling, etc.?

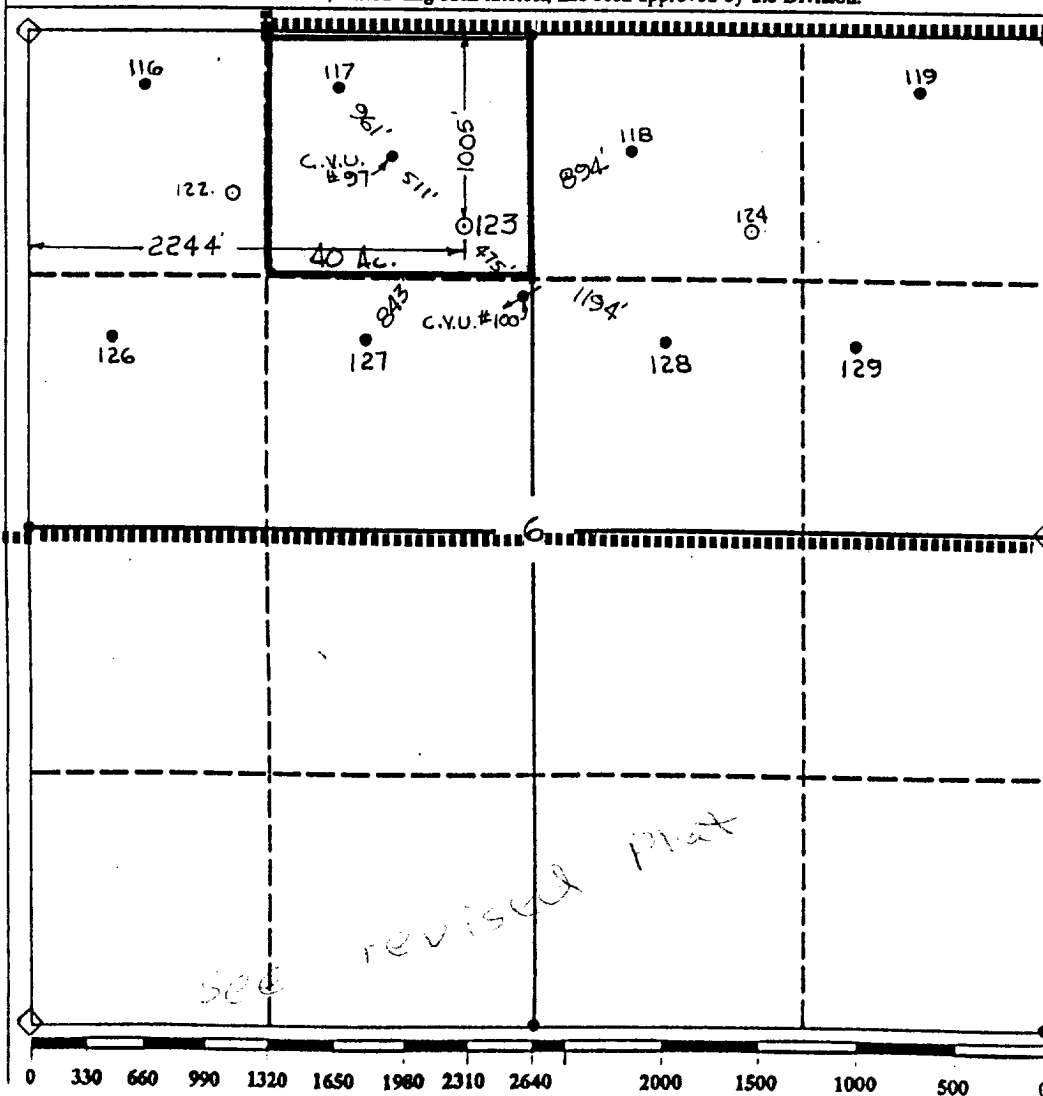
☒ Yes

☐ No

If answer is "yes" type of consolidation Unitization

If answer is "no" list the owners and tract descriptions which have actually been consolidated. (Use reverse side of this form if necessary.)

No allowable will be assigned to the well until all interests have been consolidated (by communitization, unitization, forced-pooling, or otherwise) or until a non-standard unit, eliminating such interest, has been approved by the Division.



### OPERATOR CERTIFICATION

I hereby certify that the information contained herein is true and complete to the best of my knowledge and belief.

Signature

*Royce D. Mariott*

Printed Name

Royce D. Mariott

Position

Division Surveyor

Company

Texaco Expl. & Prod.

Date

January 7, 1993

### SURVEYOR CERTIFICATION

I hereby certify that the well location shown on this plat was plotted from field notes of actual surveys made by me or under my supervision, and that the same is true and correct to the best of my knowledge and belief.

Date Surveyed

December 30, 1992

Signature & Seal of Professional Surveyor

*John S. Piner*

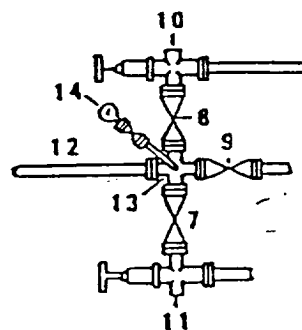
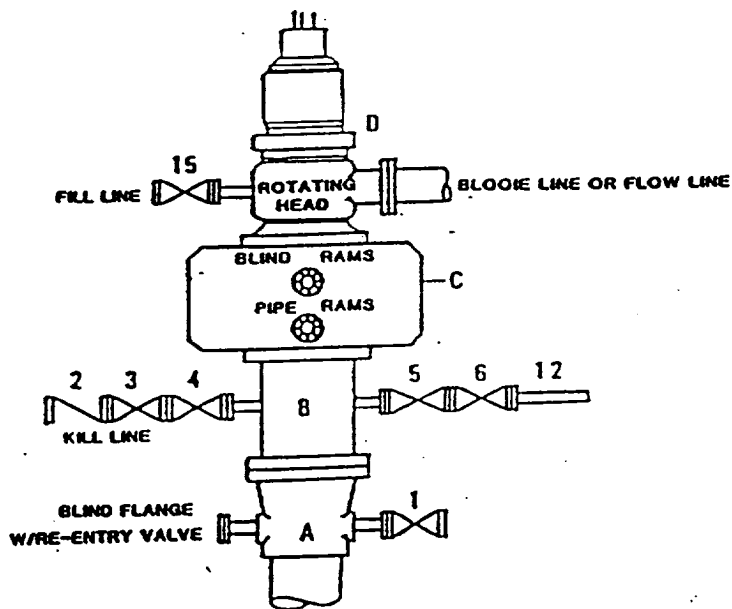
Certificate No.

7254 J. S. Piner

Lea Co. FB. 7, Pg. 54

**DRILLING CONTROL  
CONDITION II-B 3000 WP  
FOR AIR DRILLING OR  
WHERE NITROGEN OR AIR BLOWS ARE EXPECTED**

H<sub>2</sub>S TRIM REQUIRED  
YES ☒ NO ☐



**DRILLING CONTROL**

**MATERIAL LIST - CONDITION II - B**

- |                |   |
|----------------|---|
| A              | Texaco Wellhead   |
| B              | 3000# W.P. drilling spool with a 2" minimum flanged outlet for kill line and 3" minimum flanged outlet for choke line.  |
| C              | 3000# W.P. Dual ram type preventer, hydraulic operated with 1" steel, 3000# W.P. control lines (where sub-structure height is adequate, 2 - 3000# W.P. single ram type preventers may be utilized). |
| D              | Rotating Head with fill up outlet and extended Bloode Line.   |
| 1,3,4,<br>7,8, | 2" minimum 3000# W.P. flanged full opening steel gate valve, or Halliburton Lo Torc Plug valve.   |
| 2              | 2" minimum 3000# W.P. back pressure valve.  |
| 5,6,9          | 3" minimum 3000# W.P. flanged full opening steel gate valve, or Halliburton Lo Torc Plug valve.   |
| 12             | 3" minimum schedule 80, Grade "B", seamless line pipe.  |
| 13             | 2" minimum x 3" minimum 3000# W.P. flanged cross.   |
| 10,11          | 2" minimum 3000# W.P. adjustable choke bodies.  |
| 14             | Cameron Mud Gauge or equivalent ( location optional in choke line).   |
| 15             | 2" minimum 3000# W.P. flanged or threaded full opening steel gate valve, or Halliburton Lo Torc Plug valve.   |



TEXACO, INC.  
MIDLAND DIVISION  
MIDLAND, TEXAS



SCALE	DATE	EST NO	DRG NO
CRAWNEY			
REVISIONS			

EXHIBIT C



Texaco USA  
Producing Department  
Midland Division

PO Box 3109  
Midland TX 79702-3109

January 13, 1993

GOV - STATE AND LOCAL GOVERNMENTS

Unorthodox Locations

Vacuum Glorieta West Unit

Well Nos. 27, 50, 63, 77, 91, 105,  
106, 108, 121, 122, 123, and 124

Lea County, New Mexico

State of New Mexico

Energy and Minerals Department

Oil Conservation Division

P. O. Box 2088

Santa Fe, New Mexico 87501-2088

Attention: Mr. Michael E. Stogner

Gentlemen:

Texaco Exploration and Production Inc. respectfully submits, for administrative approval, amended drilling locations for the captioned injection wells under Order No. R-9714.

Well Nos. 27, 50, 91, 105, 106, 108, 121, 122, and 123 were moved because of pipelines. Well Nos. 63 and 124 were moved because of electric lines. Well No. 77 was moved to clear Phillip's M. E. Hale Well No. 16.

Attached are Forms C-102 and a "detail" drawing showing the amended locations for each well.

Yours very truly,

*C. P. Basham /cwh*

C. P. Basham  
Drilling Operations Manager

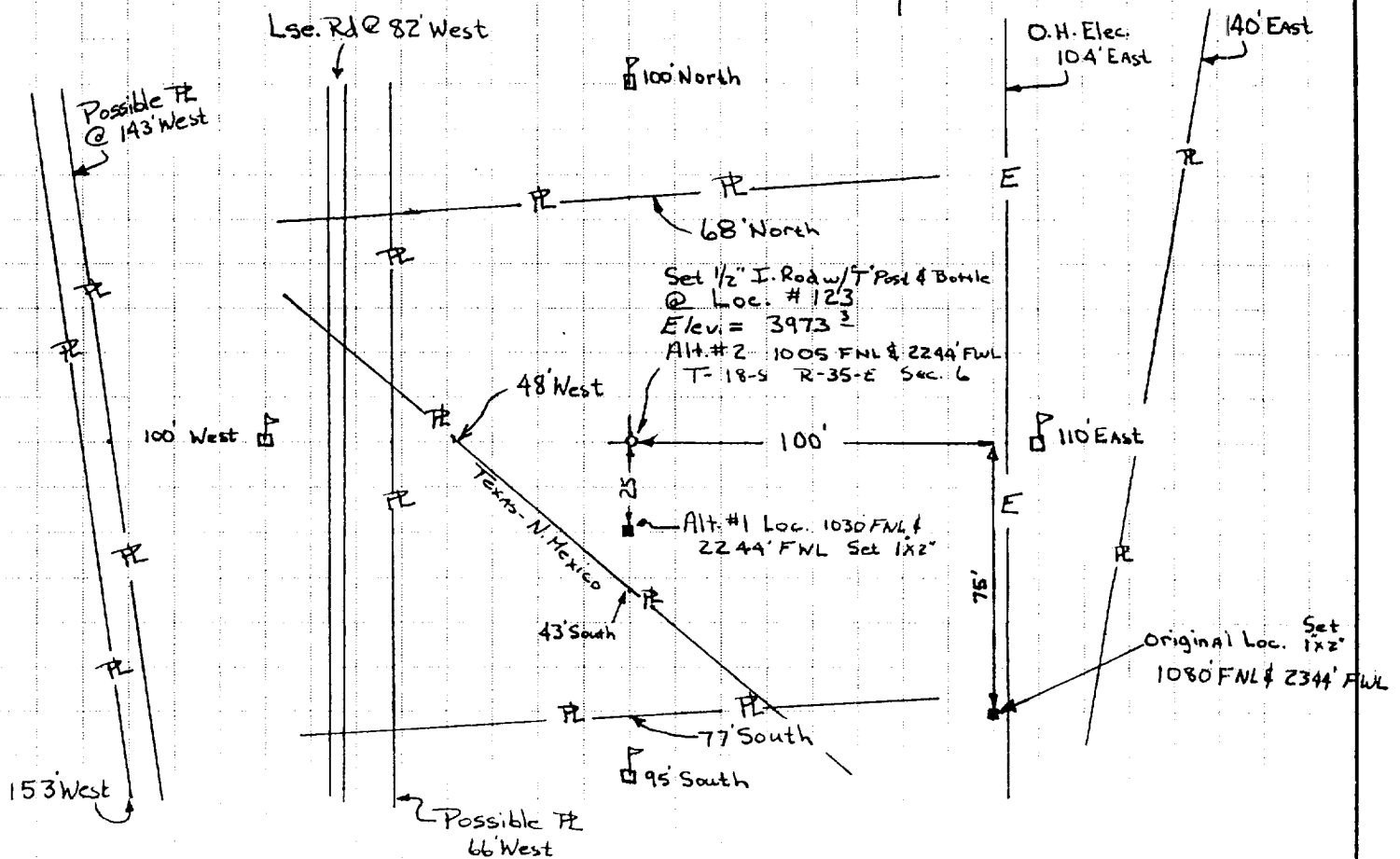
CWH:

cc:NMOCD, P. O. Box 1980, Hobbs, NM 88240

PIPER SURVEYING COMPANY

P.O. Box 60432  
MIDLAND, TEXAS 79711  
(915) 550-7810

SHEET NO. 1 OF 1  
CALCULATED BY O. Flores DATE 01/04/93  
CHECKED BY D. Kelly DATE 01/04/93  
SCALE 1"=50'



John L. Piper

