

Submit to Appropriate
District Office
State Lease - 4 copies
Fee Lease - 3 copies

State of New Mexico
Energy, Minerals and Natural Resources Department

Form C-102
Revised 1-1-89

OIL CONSERVATION DIVISION

P.O. Box 2088

Santa Fe, New Mexico 87504-2088

DISTRICT I

P.O. Box 1980, Hobbs, NM 88240

DISTRICT II

P.O. Drawer DD, Artesia, NM 88210

DISTRICT III

1000 Rio Brazos Rd., Aztec, NM 87410

WELL LOCATION AND ACREAGE DEDICATION PLAT

All Distances must be from the outer boundaries of the section

Operator PHILLIPS PETROLEUM COMPANY			Lease Vacuum Abo Unit Tr 14		Well No. Tract 14 05
Unit Letter L	Section 5	Township 18 SOUTH	Range 35 EAST	NMPM	County LEA
Actual Footage Location of Well: 1475 feet from the SOUTH line and 430 feet from the WEST line					
Ground Level Elev. 3967.2'	Producing Formation Vacuum Abo Reef		Pool Vacuum Abo Reef		Dedicated Acreage: 40 Acres

1. Outline the acreage dedicated to the subject well by colored pencil or hachure marks on the plat below.

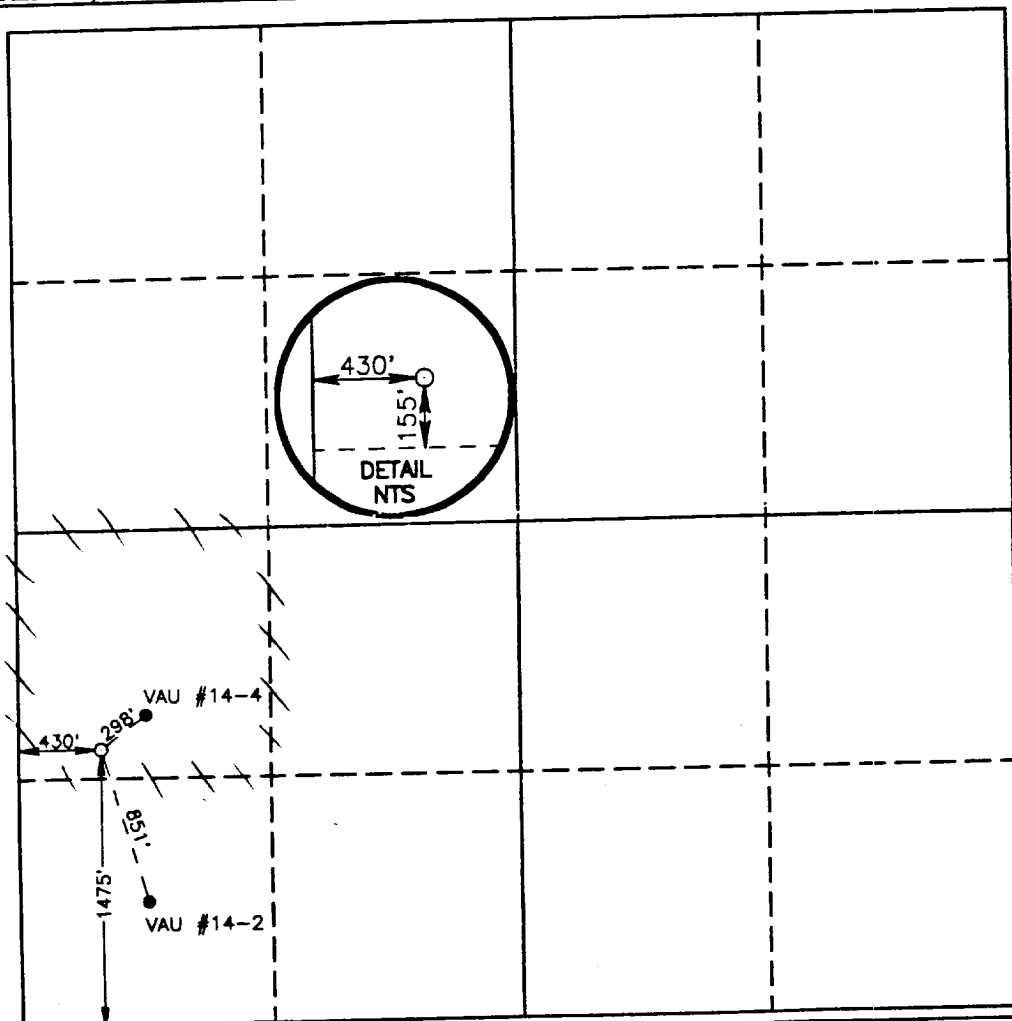
2. If more than one lease is dedicated to the well, outline each and identify the ownership thereof (both as to working interest and royalty).

3. If more than one lease of different ownership is dedicated to the well, have the interest of all owners been consolidated by communitization, unitization, force-pooling, etc.?

☐ Yes ☐ No If answer is "yes" type of consolidation _____

If answer is "no" list of owners and tract descriptions which have actually been consolidated. (Use reverse side of this form necessary.)

No allowable will be assigned to the well unit all interests have been consolidated (by communitization, unitization, forced-pooling, otherwise) or until a non-standard unit, eliminating such interest, has been approved by the Division.



OPERATOR CERTIFICATION

I hereby certify the the information contained herein is true and complete to the best of my knowledge and belief.

Signature

L. M. Sanders

Printed Name

L. M. Sanders

Position

Supv., Reg. Affairs

Company

Phillips Petroleum Co.

Date

February 25, 1993

SURVEYOR CERTIFICATION

I hereby certify that the well location shown on this plat was plotted from field notes of actual surveys made by me or under my supervision, and that the same is true and correct to the best of my knowledge and belief.

Date Surveyed

JANUARY 15, 1993

Signature & Seal of
Professional Surveyor

Gary L. Jones
GARY L. JONES
NEW MEXICO
2077
Certificate No. JOHN W. WES. 676
RONALD J. EIDSON, 3239
GARY L. JONES, 7977
93-11-5028