

Submit to Appropriate
District Office
State Lease - 6 copies
Fee Lease - 5 copies

State of New Mexico
Energy, Minerals and Natural Resources Department

Form C-101
Revised 1-1-89

OIL CONSERVATION DIVISION

DISTRICT I
P.O. Box 1980, Hobbs, NM 88240

P.O. Box 2088
Santa Fe, New Mexico 87504-2088

DISTRICT II
P.O. Drawer DD, Artesia, NM 88210

DISTRICT III
1000 Rio Brazos Rd., Aztec, NM 87410

API NO. (assigned by OCD on New Wells)

30-025-31927

5. Indicate Type of Lease

STATE ☒

FEE ☐

6. State Oil & Gas Lease No.

B-1113

APPLICATION FOR PERMIT TO DRILL, DEEPEN, OR PLUG BACK

1a. Type of Work:

DRILL ☒

RE-ENTER ☐

DEEPEN ☐

PLUG BACK ☐

b. Type of Well:

OIL
WELL ☒

GAS
WELL ☐

OTHER

SINGLE
ZONE ☒

MULTIPLE
ZONE ☐

7. Lease Name or Unit Agreement Name

WARN STATE A/C 2

2. Name of Operator

Marathon Oil Company

8. Well No.

19

3. Address of Operator

P.O. Box 552 Midland, Tx. 79702

9. Pool name or Wildcat

VACUUM (DRINKARD)

4. Well Location

Unit Letter F : 2010 Feet From The NORTH Line and 2230 Feet From The WEST Line

Section 6

Township 18-SOUTH

Range 35-EAST

NMPM LEA

County

10. Proposed Depth

8300'

11. Formation

DRINKARD

12. Rotary or C.T.

ROTARY

13. Elevations (Show whether DF, RT, GR, etc.)

3957.9'

14. Kind & Status Plug Bond

BLANKET - CURRENT

15. Drilling Contractor

UNKNOWN

16. Approx. Date Work will start

1/30-93

17. PROPOSED CASING AND CEMENT PROGRAM

SIZE OF HOLE	SIZE OF CASING	WEIGHT PER FOOT	SETTING DEPTH	SACKS OF CEMENT	EST. TOP
20"	16"	CONDUCTOR	40'	REDI-MIX	SURFACE
14.75"	11.75"	42.0	1400'	770	SURFACE
11"	8.625"	32.0	3000'	900	SURFACE
7.875"	5.5"	15.5, 17.0	8300'	1325	SURFACE

TO MINIMIZE ANY WATERFLOWS AND ENSURE GOOD PRIMARY CEMENTING, AN EXTERNAL CASING PACKER WILL BE SET @ +/- 1350' ON THE 8.625" CASING STRING. THE 5.5" PRODUCTION STRING WILL EMPLOY A STAGE TOOL @ +/- 6000' TO ENSURE A FULL COLUMN OF CEMENT TO SURFACE.

H2S SAFETY AND DETECTION EQUIPMENT WILL BE RIGGED UP AND OPERATIONAL BY 1500'. A STROKE COUNTER, PVT AND FLO-SHO INDICATOR WILL BE OPERATIONAL BY 1500'.

APPROXIMATELY 60'-90' OF CORE WILL BE CUT IN THE DRINKARD FORMATION.

BLOWOUT PREVENTION EQUIPMENT WILL BE APPLIED AS FOLLOWS: 14-3/4" SURFACE HOLE, 16-3/4" 2M DIVERTER.

11" INTERMEDIATE HOLE, 11" 3M DUAL RAMS, 11" 3M BLIND RAMS, 11" ANNULAR, 11" ROTATING HEAD. 7-7/8" PRODUCTION HOLE, 11" 3M DUAL RAMS, 11" ANNULAR, 11" ROTATING HEAD. INTERMEDIATE AND PRODUCTION BOP'S WILL TESTED BY AN INDEPENDENT TESTER. ALL EQUIPMENT WILL BE FUNCTION TESTED PERIODICALLY AS REQUIRED.

ALL CASING WILL BE RUN AND CEMENTED ACCORDING TO STATE REGULATIONS.

IN ABOVE SPACE DESCRIBE PROPOSED PROGRAM: IF PROPOSAL IS TO DEEPEN OR PLUG BACK, GIVE DATA ON PRESENT PRODUCTIVE ZONE AND PROPOSED NEW PRODUCTIVE ZONE. GIVE BLOWOUT PREVENTER PROGRAM, IF ANY.

I hereby certify that the information above is true and complete to the best of my knowledge and belief.

SIGNATURE Cecil T. Pearce 3-3-93 TITLE DRILLING SUPERINTENDENT DATE 1/19-93

TYPE OR PRINT NAME CECIL T. PEARCE

TELEPHONE NO. 915-682-1621

(This space for State Use)

APPROVED BY _____ TITLE _____ DATE MAR 11 1993

CONDITIONS OF APPROVAL, IF ANY:

Permit Expires 6 Months From Approval
Date Unless Drilling Underway.

Submit to Appropriate
District Office
State Lease - 4 copies
Fee Lease - 3 copies

State of New Mexico
Energy, Minerals and Natural Resources Department

Form C-102
Revised 1-1-89

OIL CONSERVATION DIVISION

P.O. Box 2088
Santa Fe, New Mexico 87504-2088

DISTRICT I

P.O. Box 1980, Hobbs, NM 88240

DISTRICT II

P.O. Drawer DD, Artesia, NM 88210

DISTRICT III

1000 Rio Brazos Rd., Artec, NM 87410

WELL LOCATION AND ACREAGE DEDICATION PLAT

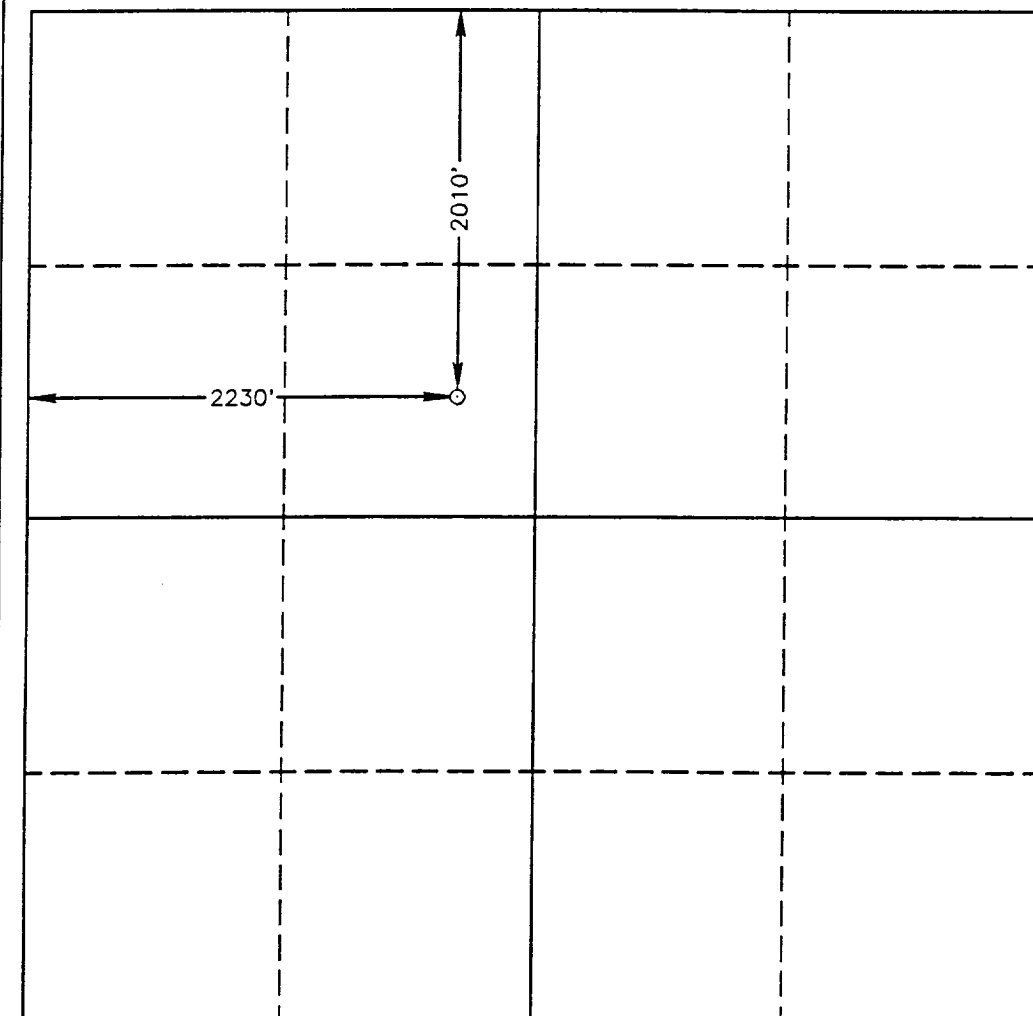
All Distances must be from the outer boundaries of the section

Operator MARATHON OIL COMPANY			Lease WARN STATE ACC. 2		Well No. 19
Unit Letter F	Section 6	Township 18 SOUTH	Range 35 EAST	NMPM	County LEA
Actual Footage Location of Well: 2010 feet from the NORTH line and 2230 feet from the WEST line					
Ground Level Elev. 3957.9'	Producing Formation Drinkard	Pool Vacuum			Dedicated Acreage: 40 Acres

- Outline the acreage dedicated to the subject well by colored pencil or hachure marks on the plat below.
- If more than one lease is dedicated to the well, outline each and identify the ownership thereof (both as to working interest and royalty).
- If more than one lease of different ownership is dedicated to the well, have the interest of all owners been consolidated by communitization, unitization, force-pooling, etc.?
☐ Yes ☐ No If answer is "yes" type of consolidation _____

If answer is "no" list of owners and tract descriptions which have actually been consolidated. (Use reverse side of this form necessary.)

No allowable will be assigned to the well unit all interests have been consolidated (by communitization, unitization, forced-pooling, otherwise) or until a non-standard unit, eliminating such interest, has been approved by the Division.



OPERATOR CERTIFICATION

I hereby certify the the information contained herein is true and complete to the best of my knowledge and belief.

Signature

C. T. Pearce 3-3-93

Printed Name

C. T. Pearce

Position

Drig. Supt.

Company

Marathon Oil Co.

Date

2-10-93

SURVEYOR CERTIFICATION

I hereby certify that the well location shown on this plat was plotted from field notes of actual surveys made by me or under my supervision, and that the same is true and correct to the best of my knowledge and belief.

Date Surveyed

JANUARY 7, 1993

Signature & Seal of
Professional Surveyor

Certificate No. JOHN McWEST, 876

RONALD J. EIDSON, 3239

GARY E. JONES, 7977

92-41-2038