

Submit to Appropriate
District Office
State Lease - 6 copies
Fee Lease - 5 copies

State of New Mexico
Energy, Minerals and Natural Resources Department

Form C-101
Revised 1-1-89

OIL CONSERVATION DIVISION

P.O. Box 2088
Santa Fe, New Mexico 87504-2088

DISTRICT I
P.O. Box 1980, Hobbs, NM 88240

DISTRICT II
P.O. Drawer DD, Artesia, NM 88210

DISTRICT III
1000 Rio Brazos Rd., Aztec, NM 87410

API NO. (assigned by OCD on New Wells)

30-025-31930

5. Indicate Type of Lease

STATE ☒

FEE ☐

6. State Oil & Gas Lease No.

B-1306

APPLICATION FOR PERMIT TO DRILL, DEEPEN, OR PLUG BACK

1a. Type of Work:

DRILL ☒

RE-ENTER ☐

DEEPEN ☐

PLUG BACK ☐

b. Type of Well:

OIL
WELL ☒

GAS
WELL ☐

OTHER ☐

SINGLE
ZONE ☒

MULTIPLE
ZONE ☐

7. Lease Name or Unit Agreement Name

NEW MEXICO 'R' STATE NCT-3

2. Name of Operator

TEXACO EXPLORATION AND PRODUCTION INC.

8. Well No.

25

3. Address of Operator

P. O. Box 3109, Midland, Texas 79702

9. Pool name or Wildcat

VACUUM DRINKARD

4. Well Location

Unit Letter I : 1980 Feet From The SOUTH Line and 660 Feet From The EAST Line

Section 1

Township 18-SOUTH

Range 34-EAST

NMPM LEA

County

10. Proposed Depth

8000'

11. Formation

DRINKARD

12. Rotary or C.T.

ROTARY

13. Elevations (Show whether DF, RT, GR, etc.)

GR-3984'

14. Kind & Status Plug. Bond

BLANKET

15. Drilling Contractor

TMBR/SHARP

16. Approx. Date Work will start

MARCH 28, 1993

17.

PROPOSED CASING AND CEMENT PROGRAM

SIZE OF HOLE	SIZE OF CASING	WEIGHT PER FOOT	SETTING DEPTH	SACKS OF CEMENT	EST. TOP
14 3/4	11 3/4	42#	1470'	890	SURFACE
11	8 5/8	32#	2950'	1100	SURFACE
7 7/8	5 1/2	15.5# & 17#	8000'	1205	SURFACE

CEMENTING PROGRAM:

SURFACE CASING - 680 SX CLASS C w/ 4% GEL & 2% CaCl₂ (13.5ppg, 1.74cf/s, 9.1gw/s). F/B 210 SX CLASS C w/ 2% CaCl₂ (14.8ppg, 1.32cf/s, 6.3gw/s).

INTERMEDIATE CASING - 1st STG: 550 SX 35/65 POZ CLASS H w/ 6% GEL, 5% SLAT, 1/4# FLOCELE (12.8ppg, 1.94cf/s, 10.4gw/s). F/B 150 SACKS CLASS H w/ 2% CaCl₂ (15.6ppg, 1.19cf/s, 5.2gw/s). 2nd STG: 400 SX CLASS H w/ 2% CaCl₂ (15.6ppg, 1.19cf/s, 5.2gw/s).

PRODUCTION CASING - 1st STG: 430 SX 35/65 POZ CLASS H w/ 6% GEL, 5% SALT, 1/4# FLOCELE (12.8ppg, 1.94cf/s, 10.4gw/s). F/B 150 SACKS CLASS H (15.6ppg, 1.18cf/s, 5.2gw/s).

DV TOOL @ 5000' - 2nd STG: 525 SX 35/65 POZ CLASS H w/ 6% GEL, 5% SALT & 1/4# FLOCELE (12.8ppg, 1.94cf/s, 10.4gw/s). F/B 100 SX CLASS H (15.6ppg, 1.18cf/s, 5.2gw/s).

THERE ARE NO OTHER OPERATORS IN THIS QUARTER QUARTER SECTION.

IN ABOVE SPACE DESCRIBE PROPOSED PROGRAM: IF PROPOSAL IS TO DEEPEN OR PLUG BACK, GIVE DATA ON PRESENT PRODUCTIVE ZONE AND PROPOSED NEW PRODUCTIVE ZONE. GIVE BLOWOUT PREVENTER PROGRAM, IF ANY.

I hereby certify that the information above is true and complete to the best of my knowledge and belief.

SIGNATURE C. P. Basham / cwh TITLE DRILLING OPERATIONS MANAGER DATE 03-18-93

TYPE OR PRINT NAME C. P. BASHAM

TELEPHONE NO. (915) 688-4620

(This space for State Use) ORIGINAL MONITOR BY JERRY SEXTON

MONITOR SUPERVISOR

APPROVED BY _____ TITLE _____ DATE _____

CONDITIONS OF APPROVAL, IF ANY:

Permit Expires 6 Months From Approval
Date Unless Drilling Underway.

MAR 22 1993

OIL CONSERVATION DIVISION

P.O. Box 2088

Santa Fe, New Mexico 87504-2088

DISTRICT I

P.O. Box 1980, Hobbs, NM 88240

DISTRICT II

P.O. Drawer DD, Artesia, NM 88210

DISTRICT III

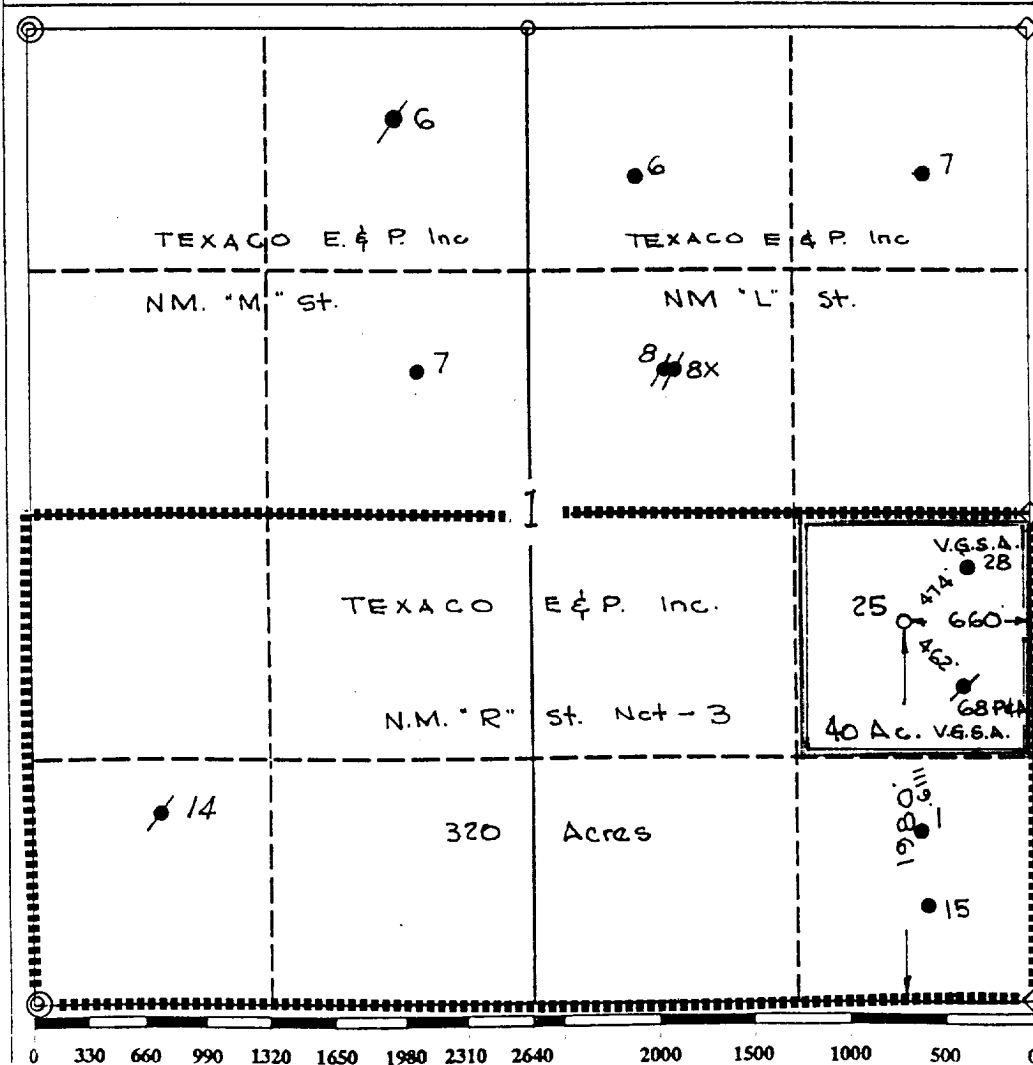
1000 Rio Brazos Rd., Aztec, NM 87410

WELL LOCATION AND ACREAGE DEDICATION PLAT

All Distances must be from the outer boundaries of the section

Operator TEXACO EXPL. & PROD. Inc.			Lease New Mexico "R" State Nct-3		Well No. 25
Unit Letter I	Section 1	Township 18-S	Range 34-E	County Lea	
Actual Footage Location of Well: 1980 feet from the South line and 660 feet from the East line					
Ground level Elev. 3984	Producing Formation Drinkard		Pool Vacuum Drinkard	Dedicated Acreage: 40 Acres	

1. Outline the acreage dedicated to the subject well by colored pencil or hatchure marks on the plat below.
2. If more than one lease is dedicated to the well, outline each and identify the ownership thereof (both as to working interest and royalty).
3. If more than one lease of different ownership is dedicated to the well, have the interest of all owners been consolidated by communitization, unitization, force-pooling, etc.?
☐ Yes ☐ No If answer is "yes" type of consolidation _____
If answer is "no" list the owners and tract descriptions which have actually been consolidated. (Use reverse side of this form if necessary). _____
No allowable will be assigned to the well until all interests have been consolidated (by communitization, unitization, forced-pooling, or otherwise) or until a non-standard unit, eliminating such interest, has been approved by the Division.



OPERATOR CERTIFICATION

I hereby certify that the information contained herein is true and complete to the best of my knowledge and belief.

Signature
Royce D. Mariott
Printed Name
Royce D. Mariott
Position
Division Surveyor
Company
Texaco Expl. & Prod.
Date
March 17, 1993

SURVEYOR CERTIFICATION

I hereby certify that the well location shown on this plat was plotted from field notes of actual surveys made by me or under my supervision, and that the same is true and correct to the best of my knowledge and belief.

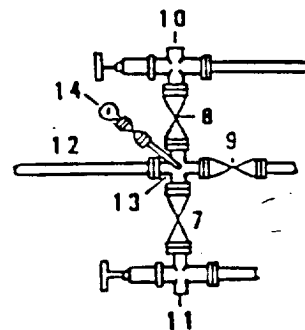
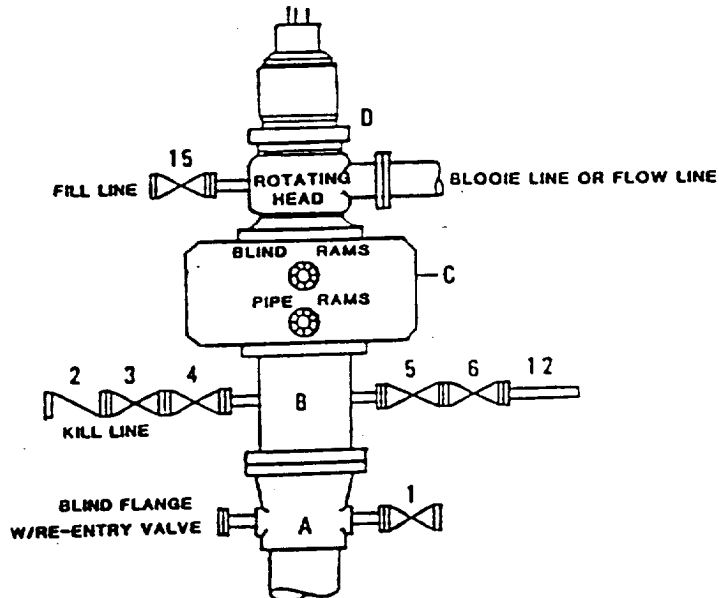
Date Surveyed
March 15, 1993
Signature & Seal of
Professional Surveyor

Certificate No.
7054 John S. Piper

Lea Co. FB. 7, Pg. 64

DRILLING CONTROL
CONDITION II-B 3000 WP
FOR AIR DRILLING OR
WHERE NITROGEN OR AIR BLOWS ARE EXPECTED

H₂S TRIM REQUIRED
 YES X NO



DRILLING CONTROL

MATERIAL LIST - CONDITION II - B

- | | |
|----------------|---|
| A | Texaco Wellhead |
| B | 3000# W.P. drilling spool with a 2" minimum flanged outlet for kill line and 3" minimum flanged outlet for choke line. |
| C | 3000# W.P. Dual ram type preventer, hydraulic operated with 1" steel, 3000# W.P. control lines (where sub-structure height is adequate, 2 - 3000# W.P. single ram type preventers may be utilized). |
| D | Rotating Head with fill up outlet and extended Blooie Line. |
| 1,3,4,
7,8, | 2" minimum 3000# W.P. flanged full opening steel gate valve, or Halliburton Lo Torc Plug valve. |
| 2 | 2" minimum 3000# W.P. back pressure valve. |
| 5,6,9 | 3" minimum 3000# W.P. flanged full opening steel gate valve, or Halliburton Lo Torc Plug valve. |
| 12 | 3" minimum schedule 80, Grade "B", seamless line pipe. |
| 13 | 2" minimum x 3" minimum 3000# W.P. flanged cross. |
| 10,11 | 2" minimum 3000# W.P. adjustable choke bodies. |
| 14 | Cameron Mud Gauge or equivalent (location optional in choke line). |
| 15 | 2" minimum 3000# W.P. flanged or threaded full opening steel gate valve, or Halliburton Lo Torc Plug valve. |



TEXACO, INC.
 MIDLAND DIVISION
 MIDLAND, TEXAS



SCALE	DATE	EST NO	DRG NO
DRAWN BY			
CHECKED BY			
APPROVED BY			

EXHIBIT C

Ms A 4-26-93

ELF

1990

1991

1992

1993

1994

1995