

DISTRICT I  
P.O. Box 1980, Hobbs, NM 88241-1980  
DISTRICT II  
P.O. Box Drawer DD, Artesia, NM 88211-0719  
DISTRICT III  
1000 Rio Brazos Rd., Aztec, NM 87410  
DISTRICT IV  
P.O. Box 2088, Santa Fe, NM 87504-2088

State of New Mexico  
Energy, Minerals and Natural Resources Department

OIL CONSERVATION DIVISION

P.O. Box 2088  
Santa Fe, New Mexico 87504-2088

Form C-101  
Revised February 10, 1994  
Instructions on back  
Submit to Appropriate District Office  
State Lease - 6 Copies  
Fee Lease - 5 Copies

☐ AMENDED REPORT

APPLICATION FOR PERMIT TO DRILL, RE-ENTER, DEEPEN, PLUGBACK, OR ADD A ZONE

<sup>1</sup> Operator Name and Address TEXACO EXPLORATION & PRODUCTION INC. 205 E. Bender, HOBBS, NM 88240		<sup>2</sup> OGRID Number 022351
<sup>4</sup> Property Code 011124	<sup>5</sup> Property Name Vacuum Grayburg San Andres <i>Unit</i>	<sup>3</sup> API Number 3002531993
		<sup>6</sup> Well No. 227

<sup>7</sup> Surface Location									
UI or lot no.	Section	Township	Range	Lot.Idn	Feet From The	North/South Line	Feet From The	East/West Line	County
J	1	18-S	34-E		1980	South	1755	East	lea

<sup>8</sup> Proposed Bottom Hole Location If Different From Surface									
UI or lot no.	Section	Township	Range	Lot.Idn	Feet From The	North/South Line	Feet From The	East/West Line	County
<sup>9</sup> Proposed Pool 1 Vacuum Grayburg San Andres					<sup>10</sup> Proposed Pool 2				

<sup>11</sup> Work Type Code P	<sup>12</sup> WellType Code O	<sup>13</sup> Rotary or C.T. ROTARY	<sup>14</sup> Lease Type Code S	<sup>15</sup> Ground Level Elevation 3987' GL
<sup>16</sup> Multiple No	<sup>17</sup> Proposed Depth	<sup>18</sup> Formation SAN ANDRES	<sup>19</sup> Contractor	<sup>20</sup> Spud Date 3/31/99

<sup>21</sup> Proposed Casing and Cement Program					
SIZE OF HOLE	SIZE OF CASING	WEIGHT PER FOOT	SETTING DEPTH	SACKS OF CEMENT	EST. TOP
NO CHANGE					

22 Describe the proposed program. If this application is to DEEPEN or PLUG BACK give the data on the present productive zone and proposed new productive zone. Describe the blowout prevention program, if any. Use additional sheets if necessary.

Prior to this recompletion, This well was a producer in the Vacuum Blinebry Pool. (Formerly known as N.M. "R" State NCT-3 #26)

1) MIRU pulling unit. TOH with production equipment and Tbg.  
2) Rig up Schlumberger wireline and set a 5 1/2" CIBP @ +/- 6600' and cap it with 35' of cmt. Set another 5 1/2" CIBP @ +/- 4640' with Schlumberger wireline.  
3) Schlumberger perforate with 2 JSPF, 180 degree phasing @ 4280-4293', 4300', 4335-4346', 4360-4372', 4391', 4404-4412' (total of 92 holes)  
4) TIH with 5 1/2" Pkr, 2 7/8" production Tbg, Test the tubing to 8500 psig going in hole. Set the Pkr @ +/- 4200'. Load backside with fresh water.  
5) Rig up Dowell and acid frac perforation 4283-4412' with 2000 gals of 15% HCl NEFE and 8000 gals 15% Super X Emulsion acid.  
6) Swab the well until the pH drops below 7 1/2. Determine fluid entry potential.  
7) Pump 2 drums of TH-756 inhibitor mixed in 20 bbls of fresh water across the perforation 4283-4412'.  
8) Release Pkr and TOH with the tbg.  
9) Run production equipment and place the well on test.

Permit Expires 1 Year From Approval  
Date Unless Drilling Underway  
*Plugback*

<sup>23</sup> I hereby certify that the rules and regulations of the Oil Conservation Division have been complied with and that the information given above is true and complete to the best of my knowledge and belief.		OIL CONSERVATION DIVISION	
Signature <i>J. Denise Leake</i>		Approved By: ORIGINAL SIGNED BY DENISE W. LEAKE DISTRICT I SUPERVISOR	
Printed Name J. Denise Leake		Title:	
Title Engineering Assistant		Approval Date: JUL 19 1999 Expiration Date:	
Date 5/18/99 Telephone 397-0405		Conditions of Approval: Attached <input type="checkbox"/>	

*Our engineer sent in an intent (C-103) attached,*

DeSoto/Nichols 3-94 ver 1.10

## DISTRICT I

P.O. Box 1980, Hobbs, NM 88241-1980

## DISTRICT II

P.O. Box Drawer DD, Artesia, NM 88211-0719

## DISTRICT III

1000 Rio Brazos Rd., Aztec, NM 87410

## DISTRICT IV

P.O. Box 2088, Santa Fe, NM 87504-2088

State of New Mexico

Energy, Minerals and Natural Resources Department

## OIL CONSERVATION DIVISION

P.O. Box 2088

Santa Fe, New Mexico 87504-2088

Form C-102

Revised February 10, 1994

Instructions on back

Submit to Appropriate District Office

State Lease - 4 Copies

Fee Lease - 3 Copies

☐ AMENDED REPORT

## WELL LOCATION AND ACREAGE DEDICATION PLAT

<sup>1</sup> API Number 3002531993	<sup>2</sup> Pool Code 62180	<sup>3</sup> Pool Name Vacuum Grayburg San Andres
<sup>4</sup> Property Code 011124	<sup>5</sup> Property Name Vacuum Grayburg San Andres	<sup>6</sup> Well No. 227
<sup>7</sup> OGRID Number 022351	<sup>8</sup> Operator Name TEXACO EXPLORATION & PRODUCTION INC.	<sup>9</sup> Elevation 3987' GL

<sup>10</sup> Surface Location

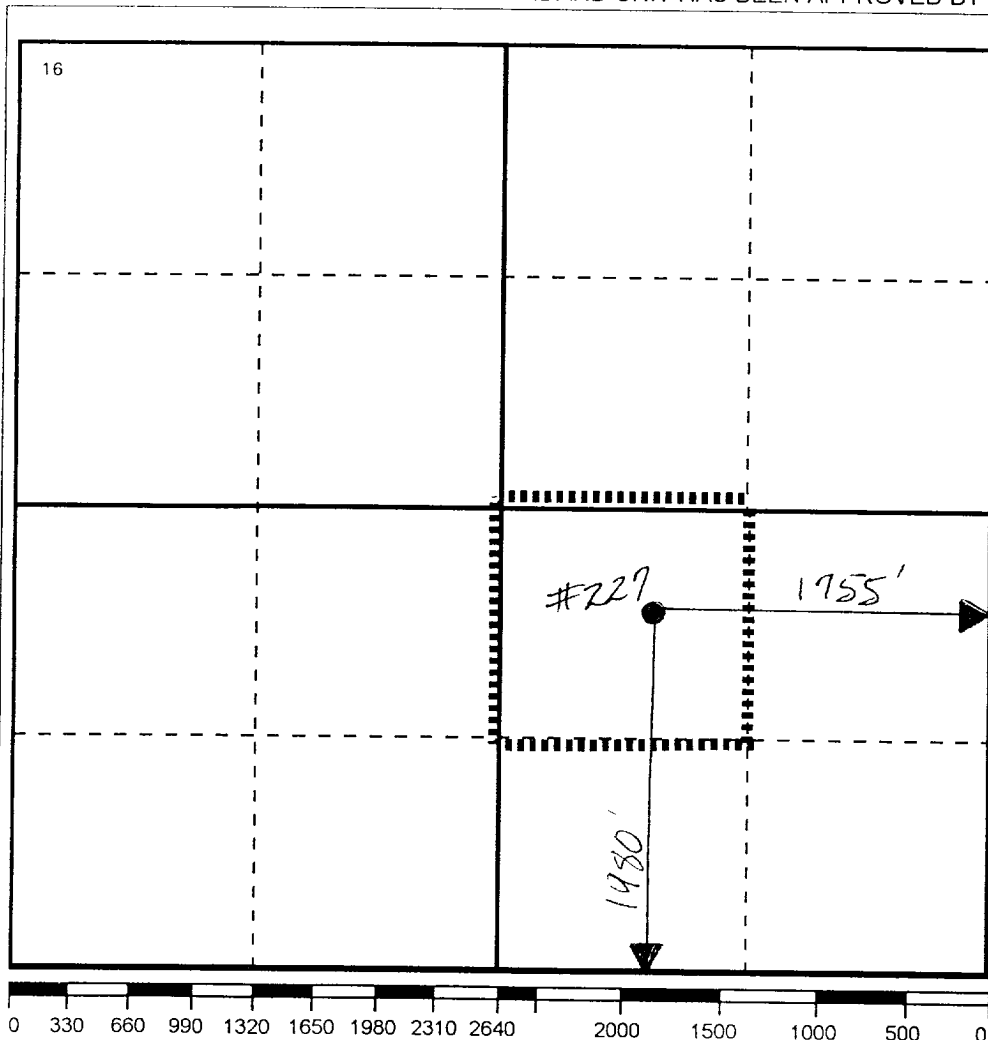
UI or lot no.	Section	Township	Range	Lot.Idn	Feet From The	North/South Line	Feet From The	East/West Line	County
J	1	18-S	34-E		1980	South	1755	East	lea

<sup>11</sup> Bottom Hole Location If Different From Surface

UI or lot no.	Section	Township	Range	Lot.Idn	Feet From The	North/South Line	Feet From The	East/West Line	County

<sup>12</sup> Dedicated Acres 40	<sup>13</sup> Joint or Infill No	<sup>14</sup> Consolidation Code	<sup>15</sup> Order No.
-------------------------------------	-------------------------------------	----------------------------------	-------------------------

NO ALLOWABLE WILL BE ASSIGNED TO THIS COMPLETION UNTIL ALL INTERESTS HAVE BEEN CONSOLIDATED  
OR A NON-STANDARD UNIT HAS BEEN APPROVED BY THE DIVISION

<sup>17</sup> OPERATOR CERTIFICATION

I hereby certify that the information contained herein is true and complete to the best of my knowledge and belief.

Signature

J. Denise Leake

Printed Name

J. Denise Leake

Position

Engineering Assistant

Date

5/18/99

<sup>18</sup> SURVEYOR CERTIFICATION

I hereby certify that the well location shown on this plat was plotted from field notes of actual surveys made by me or under my supervision, and that the same is true and correct to the best of my knowledge and belief.

Date Surveyed

Signature & Seal of  
Professional Surveyor

Certificate No.