

Submit to Appropriate
District Office
State Lease - 6 copies
Fee Lease - 5 copies

State of New Mexico
Energy, Minerals and Natural Resources Department

Form C-101
Revised 1-1-89

OIL CONSERVATION DIVISION

P.O. Box 2088
Santa Fe, New Mexico 87504-2088

DISTRICT I
P.O. Box 1980, Hobbs, NM 88240

DISTRICT II
P.O. Drawer DD, Artesia, NM 88210

DISTRICT III
1000 Rio Brazos Rd., Aztec, NM 87410

API NO. (assigned by OCD on New Wells)

30-025-32226

5. Indicate Type of Lease

STATE ☒

FEE ☐

6. State Oil & Gas Lease No.

B-1306-1

APPLICATION FOR PERMIT TO DRILL, DEEPEN, OR PLUG BACK

1a. Type of Work:

DRILL ☒

RE-ENTER ☐

DEEPEN ☐

PLUG BACK ☐

b. Type of Well:

OIL
WELL ☒

GAS
WELL ☐

OTHER ☐

SINGLE
ZONE ☒

MULTIPLE
ZONE ☐

7. Lease Name or Unit Agreement Name

VACUUM GRAYBURG SAN ANDRES
UNIT

2. Name of Operator

TEXACO EXPLORATION AND PRODUCTION INC.

8. Well No.

126

3. Address of Operator

P. O. Box 3109, Midland, Texas 79702

9. Pool name or Wildcat

VACUUM GRAYBURG SAN ANDRES

4. Well Location

Unit Letter L : 1980 Feet From The SOUTH Line and 1308 Feet From The WEST Line

Section 1 Township 18-SOUTH Range 34-EAST NMPM LEA County

10. Proposed Depth

4900'

11. Formation

GRAYBURG SAN ANDR

12. Rotary or C.T.

ROTARY

13. Elevations (Show whether DF, RT, GR, etc.)

GR-3995'

14. Kind & Status Plug. Bond

BLANKET

15. Drilling Contractor

16. Approx. Date Work will start

JULY 5, 1993

17. PROPOSED CASING AND CEMENT PROGRAM

SIZE OF HOLE	SIZE OF CASING	WEIGHT PER FOOT	SETTING DEPTH	SACKS OF CEMENT	EST. TOP
11	8 5/8	24#	1500'	650	SURFACE
7 7/8	5 1/2	15.5#	4900'	1360	SURFACE

CEMENTING PROGRAM:

SURFACE CASING - 450 SX CLASS C w/ 4% GEL & 2% Cacl2 (13.5ppg, 1.74cf/s, 9.1gw/s). F/B 200 SX CLASS C w/ 2% Cacl2 (14.8ppg, 1.32cf/s, 6.3gw/s).

PRODUCTION CASING - 1160 SX 35/65 POZ CLASS H w/ 6% GEL, 5% SALT, 1/4# FLOCELE (12.8ppg, 1.94cf/s, 10.4gw/s). F/B 200 SACKS CLASS H (15.6ppg, 1.18cf/s, 5.2gw/s).

THERE ARE NO OTHER OPERATORS IN THIS QUARTER QUARTER SECTION.

UNORTHODOX LOCATION: EXCEPTION HAS BEEN REQUESTED. (COPY ATTACHED)

IN ABOVE SPACE DESCRIBE PROPOSED PROGRAM: IF PROPOSAL IS TO DEEPEN OR PLUG BACK, GIVE DATA ON PRESENT PRODUCTIVE ZONE AND PROPOSED NEW PRODUCTIVE ZONE. GIVE BLOWOUT PREVENTER PROGRAM, IF ANY.

I hereby certify that the information above is true and complete to the best of my knowledge and belief.

SIGNATURE

C. P. Basham /swH

TITLE

DRILLING OPERATIONS MANAGER

DATE

06-11-93

TYPE OR PRINT NAME

C. P. BASHAM

TELEPHONE NO. (915) 688-4620

(This space for State Use)

ORIGINAL SIGNED BY JERRY SEXTON
DISTRICT I SUPERVISOR

APPROVED BY

TITLE

DATE

JUL 07 1993

CONDITIONS OF APPROVAL, IF ANY:

Permit Expires 6 Months From Approval
Date Unless Drilling Underway.



Mr. Michael E. Stogner

100 N. Loraine
Midland, TX 79701

P.O. Box 1980
Midland, TX 79701

June 11, 1993

GOV - STATE AND LOCAL GOVERNMENTS

Unorthodox Locations

Vacuum Grayburg San Andres Unit
Well Nos. 126, 127, and 128
Lea County, New Mexico

State of New Mexico
Energy and Minerals Department
Oil Conservation Division
P. O. Box 2088
Santa Fe, New Mexico 87501-2088

Attention: Mr. Michael E. Stogner

Gentlemen:

An Exception to Rule 104 F.I. by administrative approval is requested for Texaco Exploration and Production's Vacuum Grayburg San Andres Unit Well Nos. 126, 127, and 128. These wells are located as follows:

Well No. 126: 1980' FSL, 1308' FWL, Sec. 1, T-18-S, R-34-E
Well No. 127: 1980' FSL, 2625' FWL, Sec. 1, T-18-S, R-34-E
Well No. 128: 1980' FSL, 1220' FEL, Sec. 1, T-18-S, R-34-E

These wells must be drilled in these locations to ensure proper development of 10-acre spacing. Wells drilled previously on 10-acre spacing have proven to be viable wells. They will be completed in the Grayburg San Andres formation.

There are no "affected" offset operators to Well Nos. 126 and 127. Texaco is the only "affected" offset operator to Well No. 128 and we grant ourselves a waiver to this request. Attached is Form C-102 for each well and a lease plat showing the location of the subject wells.

Yours very truly,

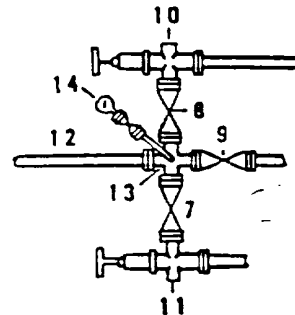
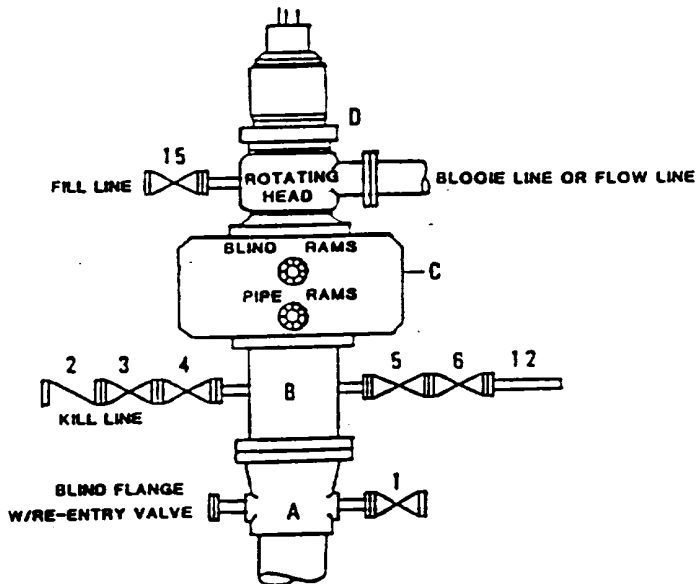
C. P. Basham / cwh

C. P. Basham
Drilling Operations Manager

CWH:cwh
Attachment
cc: NMOCD, P. O. Box 1980, Hobbs, NM 88240

**DRILLING CONTROL
CONDITION II-B 3000 WP
FOR AIR DRILLING OR
WHERE NITROGEN OR AIR BLOWS ARE EXPECTED**

H₂S TRIM REQUIRED
YES ☒ NO ☐



DRILLING CONTROL

MATERIAL LIST - CONDITION II - B

- | | |
|------------|---|
| A | Texaco Wellhead |
| B | 3000# W.P. drilling spool with a 2" minimum flanged outlet for kill line and 3" minimum flanged outlet for choke line. |
| C | 3000# W.P. Dual ram type preventer, hydraulic operated with 1" steel, 3000# W.P. control lines (where sub-structure height is adequate, 2 - 3000# W.P. single ram type preventers may be utilized). |
| D | Rotating Head with fill up outlet and extended Blooe Line. |
| 1,3,4,7,8, | 2" minimum 3000# W.P. flanged full opening steel gate valve, or Halliburton Lo Torc Plug valve. |
| 2 | 2" minimum 3000# W.P. back pressure valve. |
| 5,6,9 | 3" minimum 3000# W.P. flanged full opening steel gate valve, or Halliburton Lo Torc Plug valve. |
| 12 | 3" minimum schedule 80, Grade "B", seamless line pipe. |
| 13 | 2" minimum x 3" minimum 3000# W.P. flanged cross. |
| 10,11 | 2" minimum 3000# W.P. adjustable choke bodies. |
| 14 | Cameron Mud Gauge or equivalent (location optional in choke line). |
| 15 | 2" minimum 3000# W.P. flanged or threaded full opening steel gate valve, or Halliburton Lo Torc Plug valve. |



TEXACO, INC.
HIGHLAND DIVISION
HIGHLAND, TEXAS



SCALE	DATE	EST NO	DRG. NO.
DRAWN BY			
CHECKED BY			

EXHIBIT C