

UNITED STATES  
DEPARTMENT OF THE INTERIOR  
BUREAU OF LAND MANAGEMENT

Form approved.  
Budget Bureau No. 1004-0136  
Expires: December 31, 1991

APPLICATION FOR PERMIT TO DRILL OR DEEPEN

1a. TYPE OF WORK

DRILL ☒

DEEPEN ☐

b. TYPE OF WELL

OIL  
WELL ☒

GAS  
WELL ☐

OTHER

SINGLE  
ZONE ☒

MULTIPLE  
ZONE ☐

2. NAME OF OPERATOR

Western Pride Resources, Inc.

3. ADDRESS AND TELEPHONE NO.

P.O. Box 1208, Artesia, NM 88211-1208 (505) 746-9337

4. LOCATION OF WELL (Report location clearly and in accordance with any State requirements.)\*

At surface

2160 FNL 2310 FEL, Sec. 9, T19S, R33E

At proposed prod. zone

same

14. DISTANCE IN MILES AND DIRECTION FROM NEAREST TOWN OR POST OFFICE\*

31 mi. WSW of Hobbs, NM

15. DISTANCE FROM PROPOSED\*

LOCATION TO NEAREST  
PROPERTY OR LEASE LINE, FT.  
(Also to nearest drlg. unit line, if any)

330

18. DISTANCE FROM PROPOSED LOCATION\*

TO NEAREST WELL, DRILLING, COMPLETED,  
OR APPLIED FOR, ON THIS LEASE, FT.

1st well

16. NO. OF ACRES IN LEASE

160

19. PROPOSED DEPTH

4300

17. NO. OF ACRES ASSIGNED

TO THIS WELL

40

20. ROTARY OR CABLE TOOLS

Cable Tools

21. ELEVATIONS (Show whether DF, RT, GR, etc.)

3686 ground level

22. APPROX. DATE WORK WILL START\*

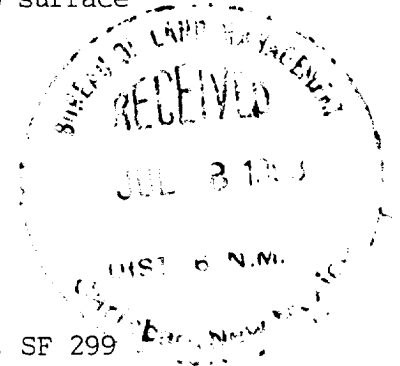
ASAP

23. PROPOSED CASING AND CEMENTING PROGRAM

SIZE OF HOLE	GRADE, SIZE OF CASING	WEIGHT PER FOOT	SETTING DEPTH	QUANTITY OF CEMENT
14"	10-3/4 H-40	32.75	500	Circ. to surface
10"	8-5/8 H-40	28.00	800	Temp. only -- mud in place
8"	5-1/2 J-55	14.00	4300	Circ. to surface

Attachments:

- Survey Plat -- NMOC Form C-102
- Drilling Plan  
Exhibit "A" Summarized Drilling Procedure  
Exhibit "B" BOP Diagram
- Surface Use Plan  
Exhibit "C" Topo Quad  
Exhibit "D" Lease Map  
Exhibit "E" Wellsite Diagram
- Application for Transportation And Utility Systems ... SF 299



IN ABOVE SPACE DESCRIBE PROPOSED PROGRAM: If proposal is to deepen, give data on present productive zone and proposed new productive zone. If proposal is to drill or deepen directionally, give pertinent data on subsurface locations and measured and true vertical depths. Give blowout preventer program, if any.

24.

SIGNED

TITLE agent for Western Pride

DATE July 7, 1993

(This space for Federal or State office use)

PERMIT NO.

APPROVAL DATE

Application approval does not warrant or certify that the applicant holds legal or equitable title to those rights in the subject lease which would entitle the applicant to conduct operations thereon.

CONDITIONS OF APPROVAL, IF ANY:

Ron Dunton

AREA MANAGER

JUL 15 1993

APPROVED BY

TITLE

DATE

\*See Instructions On Reverse Side

Title 18 U.S.C. Section 1001, makes it a crime for any person knowingly and willfully to make to any department or agency of the United States any false, fictitious or fraudulent statements or representations as to any matter within its jurisdiction.

**OIL CONSERVATION DIVISION**

**DISTRICT I**  
P.O. Box 1980, Hobbs, NM 88240

P.O. Box 2088

Santa Fe, New Mexico 87504-2088

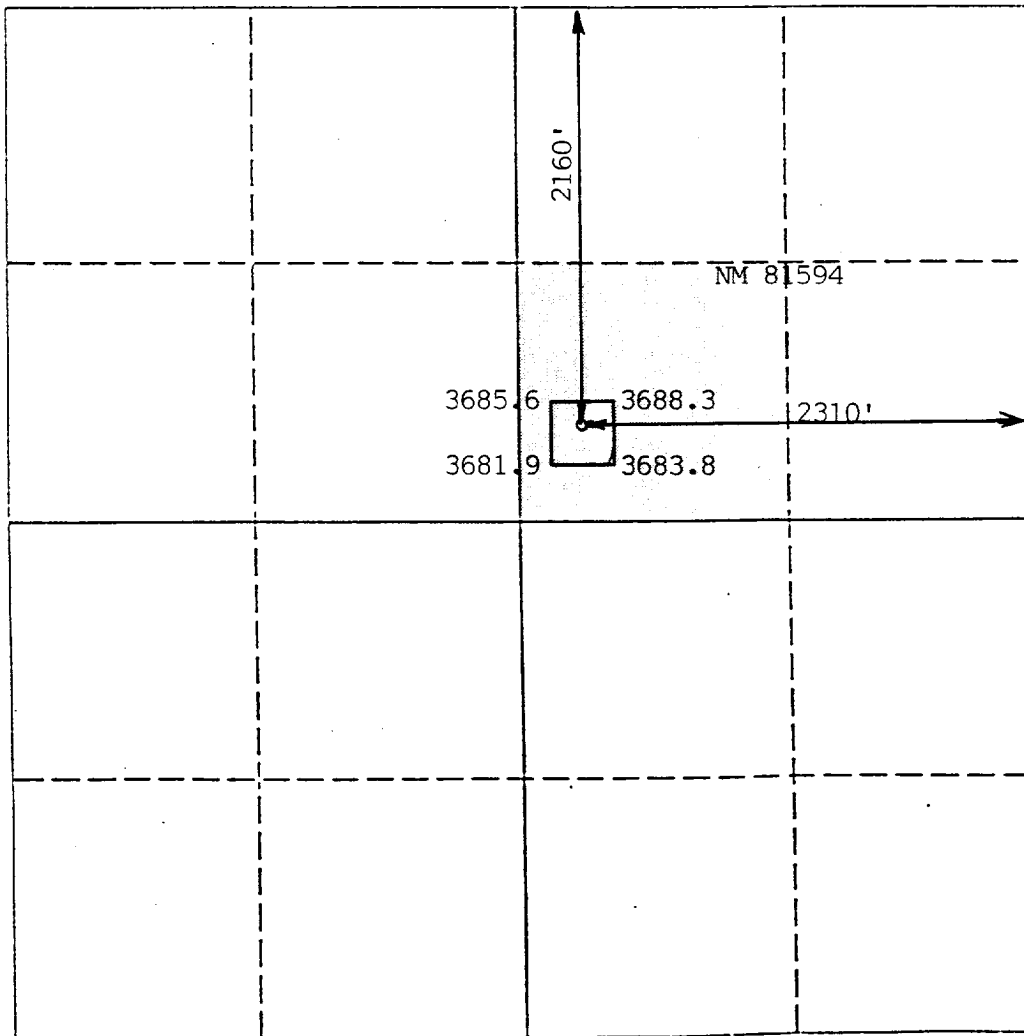
**DISTRICT II**  
P.O. Drawer DD, Artesia, NM 88210

**DISTRICT III**  
1000 Rio Brazos Rd., Aztec, NM 87410

**WELL LOCATION AND ACREAGE DEDICATION PLAT**

All Distances must be from the outer boundaries of the section

Operator <b>Western Pride Resources, Inc.</b>		Lease <b>Centennial Federal</b>		Well No. <b>1</b>
Unit Letter <b>G</b>	Section <b>9</b>	Township <b>19 South</b>	Range <b>33 East</b>	County <b>Lea</b>
Actual Footage Location of Well: <b>2160</b> feet from the <b>North</b> line and <b>2310</b> feet from the <b>East</b> line				
Ground level Elev. <b>3686</b>	Producing Formation <b>Seven-Rivers - <del>Queen</del></b>	Pool <b>Buffalo</b>	Dedicated Acreage: <b>40</b> Acres	
<p>1. Outline the acreage dedicated to the subject well by colored pencil or hatchure marks on the plat below.</p> <p>2. If more than one lease is dedicated to the well, outline each and identify the ownership thereof (both as to working interest and royalty).</p> <p>3. If more than one lease of different ownership is dedicated to the well, have the interest of all owners been consolidated by communization, unitization, force-pooling, etc.? <input type="checkbox"/> Yes <input type="checkbox"/> No If answer is "yes" type of consolidation _____</p> <p>If answer is "no" list the owners and tract descriptions which have actually been consolidated. (Use reverse side of this form if necessary.) _____</p> <p>No allowable will be assigned to the well until all interests have been consolidated (by communization, unitization, forced-pooling, or otherwise) or until a non-standard unit, eliminating such interest, has been approved by the Division.</p>				



**OPERATOR CERTIFICATION**

I hereby certify that the information contained herein is true and complete to the best of my knowledge and belief.

*P.R. Patton*  
Signature

P.R. Patton  
Printed Name

agent for Western Pride  
Position

Western Pride Resources  
Company

July 7, 1993  
Date

**SURVEYOR CERTIFICATION**

I hereby certify that the well location shown on this plat was plotted from field notes of actual surveys made by me or under my supervision, and that the same is true and correct to the best of my knowledge and belief.

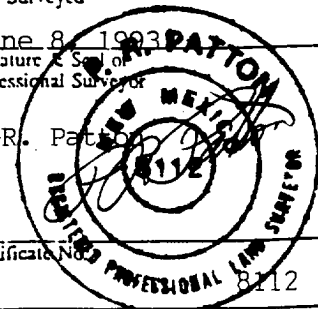
Date Surveyed

June 8, 1993  
Signature & Seal of  
Professional Surveyor

P.R. Patton

Certificate No.

8112



0 330 660 990 1320 1650 1980 2310 2640 2000 1500 1000 500 0

DRILLING PLAN  
To Accompany  
APPLICATION FOR PERMIT TO DRILL

WESTERN PRIDE RESOURCES, INC.  
CENTENNIAL FEDERAL WELL #1  
2160 FNL, 2310 FEL, SEC.9, T19S, R33E NMPM  
Lea County, NM

In conjunction with Form 3160-3, Application for Permit to Drill, Western Pride Resources, Inc. submits the following items of pertinent information in accordance with Onshore Oil & Gas Order Nos. 1 & 2, and with all other applicable federal and state regulations.

1. Estimated Tops of Geologic Markers

The surface geologic formation is Quaternary Alluvium and Bolson deposits, overlying Triassic Redbeds of the Dockum Group; the estimated tops of geologic markers are as follows:

FORMATION	DEPTH	SUBSEA
Land Surface	0	3686
Triassic	100	3586
Rustler	450	3236
Top of Salt	1520	2166
Yates	3560	126
Seven Rivers	3760	-74

2. The estimated depths at which water, oil, or gas formations are expected to be encountered:

A. Fresh Water

May be found at the base of the Quaternary Alluvium, at a depth of about 100 feet; it will be protected with 10-3/4" casing set at 500 feet (in the basal Triassic Redbeds/ upper Rustler) and cemented to surface, as per NMOCC regulations.

B. Oil or Gas:

Formation	Hydrocarbon	Depth
Yates	Oil	3500
Seven Rivers	Oil	3800

Potentially productive horizons to be protected by 5-\_" production casing with cement extending to surface.

3. Pressure Control Equipment

See Exhibit "B" for Description and test pressures; Refer to Exhibit "A" for testing schedule.

4. Proposed Casing and Cementing Program:

See Form 3160-3 and Exhibit "A", "Summarized Drilling Procedure".

5. Mud Program:

Interval:

0-TD' Utilise freshwater as required to maintain proper drilling action -- mud not required for cable tool hole except to maintain drilling action.

6. Testing, Logging, and Coring Programs:

DSTs:

Not applicable to cable tool operations

Mud Logging:

None

Electric / Radioactive Logging:

Open Hole Logs:

GRN-Caliper-DLL -- From TD to 500 ft

Cased Hole Logs

GRN -- From top of open hole logged interval to surface

Temperature -- as needed to establish TOC

Coring:

No Coring is planned at this time.

7. Abnormal Pressures, Temperatures, or other Hazards:

Lost Circulation Zones:

Zones of lost circulation are not anticipated and are not applicable to cable tool drilling in the ordinary course of concerns

High Pressure Zones:

Above normal pressures are not anticipated. Projected Pressure Gradients are:

Interval	Gradient	Est. Max. BHP
Surface to 4300'	0.433 psi/ft	1862 psi

Hydrogen Sulphide Gas:

Hydrogen sulphide is not believed to be a problem in the Yates, or Seven Rivers in this area; however, appropriate precautions will be taken.

8. Anticipated Starting Date:

As soon as possible.

EXHIBIT "A"  
To Accompany  
APPLICATION FOR PERMIT TO DRILL

WESTERN PRIDE RESOURCES, INC.  
CENTENNIAL FEDERAL WELL #1  
2160 FNL 2310 FEL, SEC.9, T19S, R33E NMPM  
Lea County, NM

SUMMARIZED DRILLING PROCEDURE

- 0-500      Drill 14" hole to top of 500 ft. Utilise fresh water as required to maintain proper drilling action. Run 10-3/4" OD casing, circulate bottoms up, and cement to surface. Should cement not circulate, run temperature survey and 1" to surface. WOC 12 hrs. or until cement reaches F'c=500psi.
- 500-800    Drill 10" hole to 800 ft. Utilise fresh water as required to maintain proper drilling action. Run temporary 8-5/8" OD casing from surface to 800 ft, mudded in place to control water. Nipple up 10-3/4 x 8-5/8 casing hanger and BOP stack on 10-3/4" casing. Test to Rated WP. Test BOP daily.
- 800-4300   Drill 8" hole to 4300 (TD). Utilise fresh water as required to maintain proper drilling action. Condition hole for running electric logs. At completion of logging, remove temporary casing, run 5-1/2" casing to TD, and circulate cement to surface. WOC 24 hrs and begin completion operations.

# BOP DIAGRAM

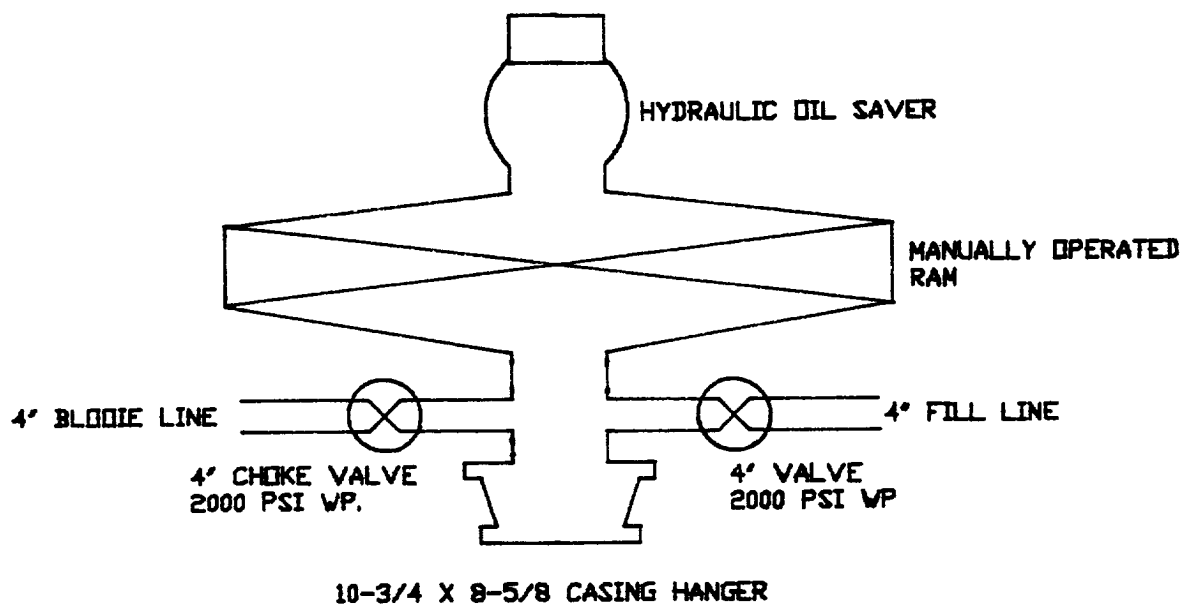


EXHIBIT "B"  
WESTERN PRIDE RESOURCES, INC.  
CENTENNIAL FEDERAL WELL No. 1  
UNIT G, T19S, R33E, LEA Co.