

Submit to Appropriate
District Office
State Lease - 4 copies
Fee Lease - 3 copies

State of New Mexico
E. gy, Minerals and Natural Resource Department

Form C-102
Revised 1-1-89

OIL CONSERVATION DIVISION

P.O. Box 2088

Santa Fe, New Mexico 87504-2088

DISTRICT I

P.O. Box 1980, Hobbs, NM 88240

DISTRICT II

P.O. Drawer DD, Artesia, NM 88210

DISTRICT III

1000 Rio Brazos Rd., Aztec, NM 87410

WELL LOCATION AND ACREAGE DEDICATION PLAT

All Distances must be from the outer boundaries of the section

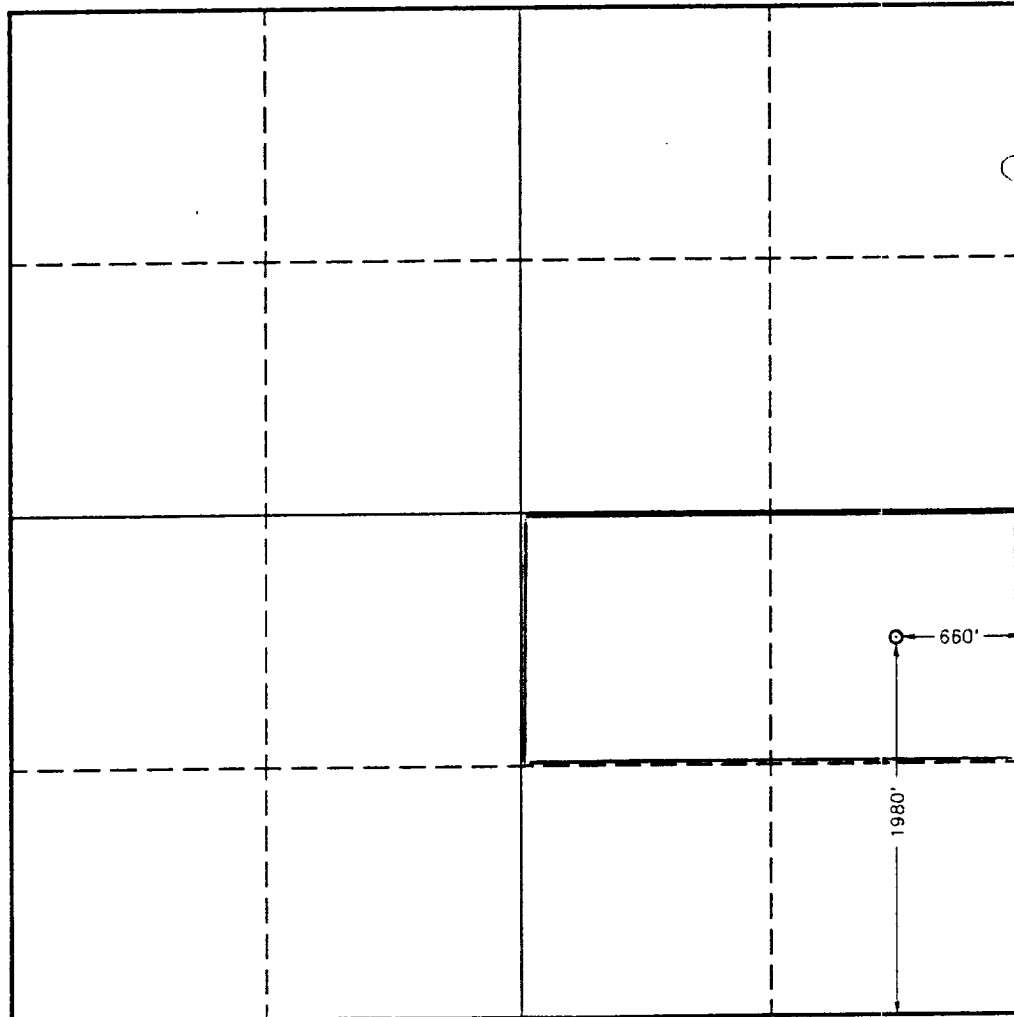
Operator SAGE ENERGY COMPANY		Lease NVANU "3"		Well No. 2
Unit Letter I	Section 1	Township 17. SOUTH	Range 34 EAST NMPM	County LEA
Actual Footage Location of Well: 1980' feet from the SOUTH line and 660 feet from the EAST line				
Ground Level Elev. 4022.7'	Producing Formation Abo	Pool North Virelle NM NVANU Abo		Dedicated Acreage: 80 Acres

1. Outline the acreage dedicated to the subject well by colored pencil or hachure marks on the plat below.
2. If more than one lease is dedicated to the well, outline each and identify the ownership thereof (both as to working interest and royalty).
3. If more than one lease of different ownership is dedicated to the well, have the interest of all owners been consolidated by communitization, unitization, force-pooling, etc.?

☐ Yes ☐ No If answer is "yes" type of consolidation _____

If answer is "no" list of owners and tract descriptions which have actually been consolidated. (Use reverse side of this form necessary.)

No allowable will be assigned to the well unit all interests have been consolidated (by communitization, unitization, forced-pooling, otherwise) or until a non-standard unit, eliminating such interest, has been approved by the Division.



OPERATOR CERTIFICATION

I hereby certify the the information contained herein is true and complete to the best of my knowledge and belief.

Signature

Printed Name

Tonya Streun

Position

Production Clerk

Company

SAGE ENERGY COMPANY

Date

9-24-93

SURVEYOR CERTIFICATION

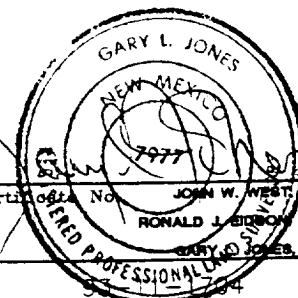
I hereby certify that the well location shown on this plat was plotted from field notes of actual surveys made by me or under my supervision, and that the same is true and correct to the best of my knowledge and belief.

Date Surveyed

SEPTEMBER 15, 1993

Signature & Seal of

Professional Surveyor



Certificate No. JOHN W. WEST 676

RONALD J. BURTON 3230

GARY L. JONES 7977

SEP 27 1993
10/1/93
10/1/93

RECEIVED

SEP 27 1993

JOHN HUBBS
OFFICE