

Submit to Appropriate  
District Office  
State Lease - 6 copies  
Fee Lease - 5 copies

State of New Mexico  
Energy, Minerals and Natural Resources Department

Form C-101  
Revised 1-1-89

OIL CONSERVATION DIVISION

DISTRICT I  
P.O. Box 1980, Hobbs, NM 88240

P.O. Box 2088  
Santa Fe, New Mexico 87504-2088

DISTRICT II  
P.O. Drawer DD, Artesia, NM 88210

DISTRICT III  
1000 Rio Brazos Rd., Aztec, NM 87410

API NO. (assigned by OCD on New Wells)

32-025-32260

5. Indicate Type of Lease

STATE ☒

FEE ☐

6. State Oil & Gas Lease No.

V3349

APPLICATION FOR PERMIT TO DRILL, DEEPEN, OR PLUG BACK

1a. Type of Work:

DRILL ☒

RE-ENTER ☐

DEEPEN ☐

PLUG BACK ☐

b. Type of Well:

OIL

WELL ☒

GAS

WELL ☐

OTHER ☐

SINGLE

ZONE ☐

MULTIPLE

ZONE ☐

7. Lease Name or Unit Agreement Name

State "36"

2. Name of Operator

Olsen Energy, Inc.

8. Well No.

4

3. Address of Operator

16414 San Pedro, Suite 470, San Antonio, Texas 78232

9. Pool name or Wildcat

Vacuum - GR/SA

4. Well Location

Unit Letter

K

: 2310

Feet From The

South

Line and

1980

Feet From The

West

Line

Section 36

Township

17-S

Range

33-E

NMPM

Lea

County

10. Proposed Depth

4900

11. Formation

San Andres

12. Rotary or C.T.

Rotary

13. Elevations (Show whether DF, RT, GR, etc.)

4114 GR

14. Kind & Status Plug. Bond

Single Well App. For

15. Drilling Contractor

Not Selected

16. Approx. Date Work will start

9-30-93

17.

PROPOSED CASING AND CEMENT PROGRAM

SIZE OF HOLE	SIZE OF CASING	WEIGHT PER FOOT	SETTING DEPTH	SACKS OF CEMENT	EST. TOP
12 $\frac{1}{4}$	8-5/8	24	1500	525	Circ
7-7/8	5 $\frac{1}{2}$	17	4900	400	2500

1. Drill 12 $\frac{1}{4}$ " hole to 1500' with spud mud.

2. Set 8-5/8" casing. Cement with 525 sacks to circulate to surface.

3. Drill 7-7/8" hole to 4900' with brine water and brine/gel/starch mud.

4. Run open hole logs at TD.

5. If logs indicate production, run 5 $\frac{1}{2}$ " casing. Cement with sufficient cement to bring top of cement to 2500'.

IN ABOVE SPACE DESCRIBE PROPOSED PROGRAM: IF PROPOSAL IS TO DEEPEN OR PLUG BACK, GIVE DATA ON PRESENT PRODUCTIVE ZONE AND PROPOSED NEW PRODUCTIVE ZONE. GIVE BLOWOUT PREVENTER PROGRAM, IF ANY.

I hereby certify that the information above is true and complete to the best of my knowledge and belief.

SIGNATURE Dick Morton TITLE Drilling/Production Manager DATE 8-30-93

TYPE OR PRINT NAME DICK MORTON TELEPHONE NO. 210/496-2466

(This space for State Use)

ORIGINAL SIGNED BY JERRY SEXTON  
DISTRICT I SUPERVISOR

APPROVED BY \_\_\_\_\_ TITLE \_\_\_\_\_ DATE OCT 13 1993

CONDITIONS OF APPROVAL, IF ANY:

**RECEIVED**

SEP 03 1993

OCD HOBBS  
OFFICE

N. MEXICO OIL CONSERVATION COMMISSION  
WELL LOCATION AND ACREAGE DEDICATION PLAT

Form C-102  
Supersedes C-128  
Effective 1-1-65

All distances must be from the outer boundaries of the Section.

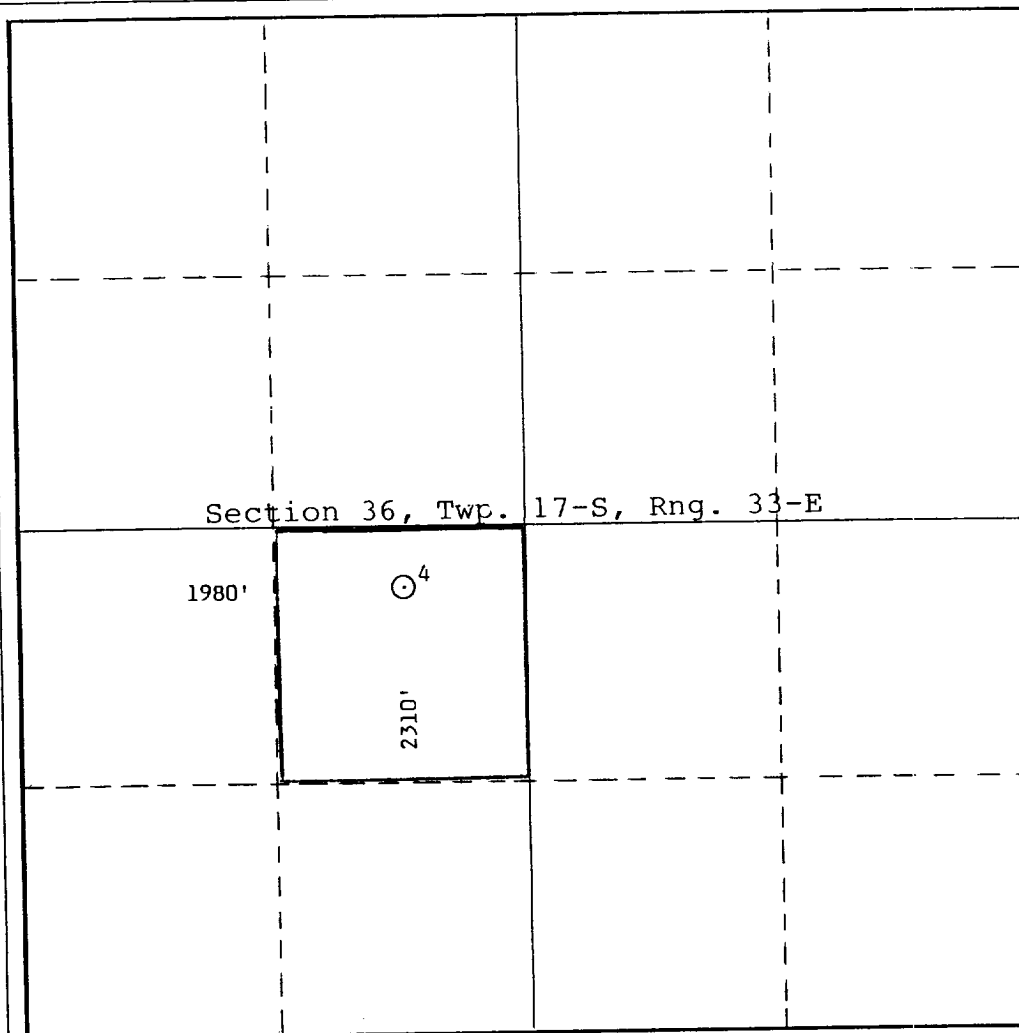
Operator <b>Olsen Energy Inc.</b>			Lease <b>State "36"</b>		Well No. <b>4</b>
Unit Letter <b>K</b>	Section <b>36</b>	Township <b>17-S</b>	Range <b>33-E</b>	County <b>Lea</b>	
Actual Footage Location of Well: <b>2310</b> feet from the <b>South</b> line and <b>1980</b> feet from the <b>West</b> line					
Ground Level Elev. <b>4114</b>	Producing Formation <b>Grayburg - San Andres</b>		Pool <b>Vacuum - GR/SA</b>	Dedicated Acreage: <b>40</b> Acres	

1. Outline the acreage dedicated to the subject well by colored pencil or hachure marks on the plat below.
2. If more than one lease is dedicated to the well, outline each and identify the ownership thereof (both as to working interest and royalty).
3. If more than one lease of different ownership is dedicated to the well, have the interests of all owners been consolidated by communitization, unitization, force-pooling, etc?

☐ Yes ☐ No If answer is "yes," type of consolidation \_\_\_\_\_

If answer is "no," list the owners and tract descriptions which have actually been consolidated. (Use reverse side of this form if necessary.) \_\_\_\_\_

No allowable will be assigned to the well until all interests have been consolidated (by communitization, unitization, forced-pooling, or otherwise) or until a non-standard unit, eliminating such interests, has been approved by the Commission.



CERTIFICATION

I hereby certify that the information contained herein is true and complete to the best of my knowledge and belief.

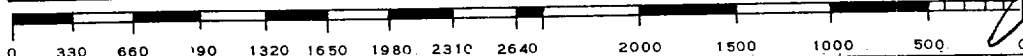
Name  
**Dick Morton**  
Position  
**Drilling/Production Mgr**  
Company  
**Olsen Energy, Inc.**  
Date

I hereby certify that the well location shown on this plat was plotted from field notes of actual surveys made by me or under my supervision, and that the same is true and correct to the best of my knowledge and belief.

Date Surveyed  
**June 4, 1993**

Registered Professional Engineer  
and/or Land Surveyor

*[Signature]*  
Certificate No.



**RECEIVED**

**SEP 03 1993**

**OCD HODGSON  
OFFICE**

1) 2" SERIES 900 VALVE

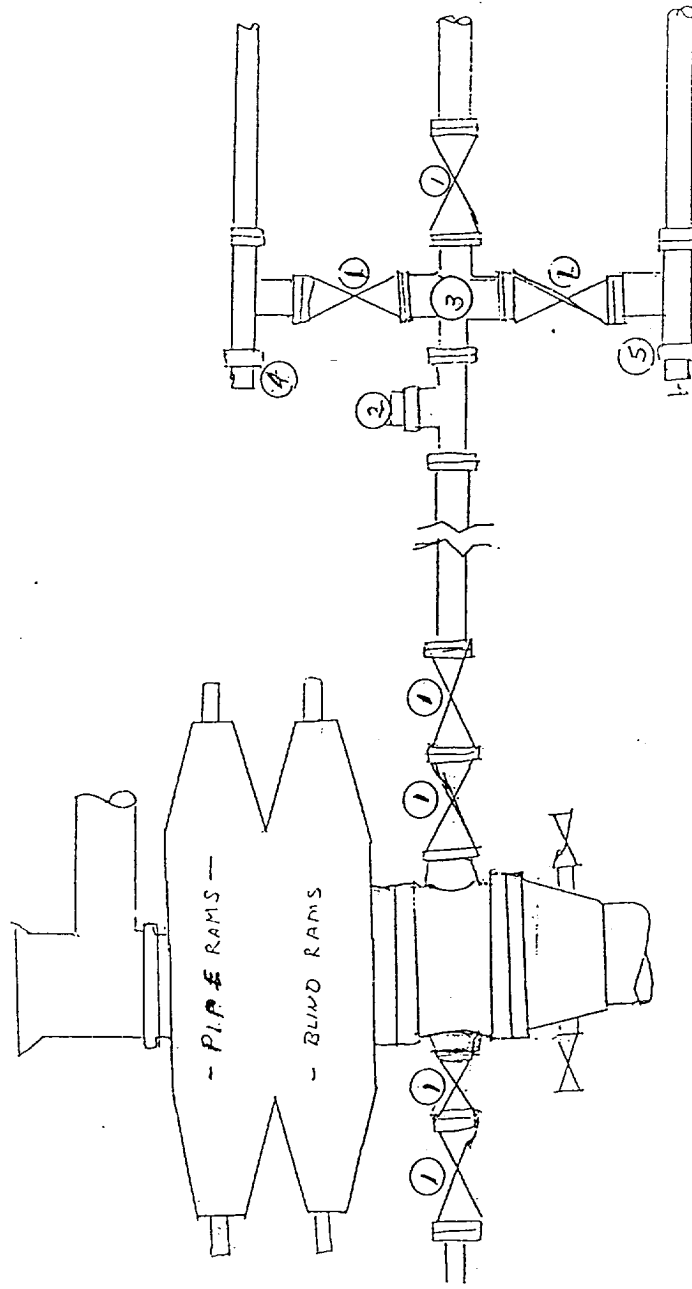
2) PRESSURE GAUGE ON 2"x2"x2" 900 SERIES TEE

3) 2" SERIES 900 X 2" SERIES 900 CROSS

4) 2" SERIES 900 POSITIVE CHOKE

5) 2" SERIES 900 ADJUSTABLE CHOKE

OLSEN ENERGY INC  
STATE "36" No. 4  
UNIT K, Sec. 36-17S-33E  
LEA COUNTY, NM



3000 PSI WORKING PRESSURE  
BLOWOUT PREVENTOR HOOK-UP

67-82-7

by

2000

**RECEIVED**

SEP 08 1993

OCD HOLLAND  
OFFICE