

N.M. OIL & GAS COMMISSION
P.O. BOX 1800 UNITED STATES
HOBBBS, DEPARTMENT OF THE INTERIOR
BUREAU OF LAND MANAGEMENT

SUBMIT IN TRIPLICATE*

(Other instructions on
reverse side)FORM APPROVED
OMB NO. 1004-0136
Expires: February 28, 1995

5. LEASE DESIGNATION AND SERIAL NO.

NM 12568A

6. IF INDIAN, ALLOTTEE OR TRIBE NAME

7. UNIT AGREEMENT NAME

8. FARM OR LEASE NAME

BONDURANT FEDERAL

9. WELL NO.

10

10. FIELD AND POOL, OR WILDCAT

BUFFALO YATES

11. SEC., T., R., M., OR BLK.
AND SURVEY OR AREA

SEC. 1, T19S, R32E

12. COUNTY OR PARISH

LEA

13. STATE

NM

APPLICATION FOR PERMIT TO DRILL OR DEEPEN

1a. TYPE OF WORK

DRILL ☒DEEPEN ☐

b. TYPE OF WELL

OIL
WELL ☒GAS
WELL ☐

OTHER

SINGLE
ZONE ☒MULTIPLE
ZONE ☐

2. NAME OF OPERATOR

MERIDIAN OIL INC.

3. ADDRESS AND TELEPHONE NO.

P.O. BOX 51810, MIDLAND, TX 79710

915-688-6943

4. LOCATION OF WELL (Report location clearly and in accordance with any State requirements.)*

At surface

990' FNL & 1980' FEL

At proposed prod. zone

Unit B

14. DISTANCE IN MILES AND DIRECTION FROM NEAREST TOWN OR POST OFFICE*

9 MILES SOUTHEAST OF MALJAMAR, NM

15. DISTANCE FROM PROPOSED*

LOCATION TO NEAREST

PROPERTY OR LEASE LINE, FT.

(Also to nearest drlg. unit line, if any)

990'

16. NO. OF ACRES IN LEASE

440

17. NO OF ACRES ASSIGNED
TO THIS WELL

40

18. DISTANCE FROM PROPOSED LOCATION*

TO NEAREST WELL, DRILLING, COMPLETED,
OR APPLIED FOR, ON THIS LEASE, FT.

661'

19. PROPOSED DEPTH

3750

20. ROTARY OR CABLE TOOLS

ROTARY

21. ELEVATIONS (Show Whether DF, RT, GR, ETC.)

3693

22. APPROX. DATE WORK WILL START

UPON APPROVAL

23. PROPOSED CASING AND CEMENTING PROGRAM

SIZE OF HOLE	GRADE, SIZE OF CASING	WEIGHT PER FOOT	SETTING DEPTH	QUANTITY OF CEMENT
12 1/4"	8 5/8"	28#	600'	400 SXS - CIRC
7 7/8"	5 1/2"	15.5#	3800'	1000 SXS - CIRC

NO H2S REQUIREMENTS AS PER ED BAILEY/BLM ON JANUARY 5, 1994.

MUD PROGRAM: 0 - 600 FRESH WATER GEL AND LIME; 600 - 3800 SALT WATER W/MW 9.8 - 10.2. NO ABNORMAL PRESSURES OR TEMPERATURES EXPECTED.

BOP PROGRAM: 10" 3-M BOP STACK TO BE INSTALLED ON THE 8 5/8" AND LEFT FOR REMAINDER OF DRILLING.

SIMULTANEOUS DEDICATION WITH BONDURANT FEDERAL # 5 LOCATED IN UNIT LETTER B, 330' FNL & 1650' FEL, OF SEC. 1, T19S, R32E.

OPER. OGRID NO. 014538

PROPERTY NO. 006843

POOL CODE 0B180

EFF. DATE 2-28-94

API NO. 30-025-32431

IN ABOVE SPACE DESCRIBE PROPOSED PROGRAM: If proposal is to deepen, give data on present productive zone and proposed new productive zone. If proposal is to drill or deepen directionally, give pertinent data on subsurface locations and measured and true vertical depths. Give blowout preventer program, if any.

24.

SIGNED

TITLE

PRODUCTION ASSISTANT

DATE

1/10/94

(This space for Federal or State office use)

PERMIT NO.

APPROVAL DATE

Application approval does not warrant or certify that the applicant holds legal or equitable title to those rights in the subject lease which would entitle the applicant to conduct operations thereon.

CONDITIONS OF APPROVAL, IF ANY:

APPROVAL SUBJECT TO
GENERAL REQUIREMENTS AND
SPECIAL STIPULATIONS
ATTACHED

APPROVED BY

(ORIG. SGD.) RICHARD L. MANUS

AREA MANAGER

DATE

FEB 23 1994

*See Instructions On Reverse Side

Title 18 U.S.C. Section 1001, makes it a crime for any person knowingly and willfully to make to any department or agency of the United States any false, fictitious or fraudulent statements or representations as to any matter within its jurisdiction.

Submit to Appropriate
District Office
State Lease - 4 copies
Fee Lease - 3 copies

State of New Mexico
Energy, Minerals and Natural Resources Department

Form C-102
Revised 1-1-89

OIL CONSERVATION DIVISION

P.O. Box 2088
Santa Fe, New Mexico 87504-2088

DISTRICT I
P.O. Box 1980, Hobbs, NM 88240

DISTRICT II
P.O. Drawer DD, Artesia, NM 88210

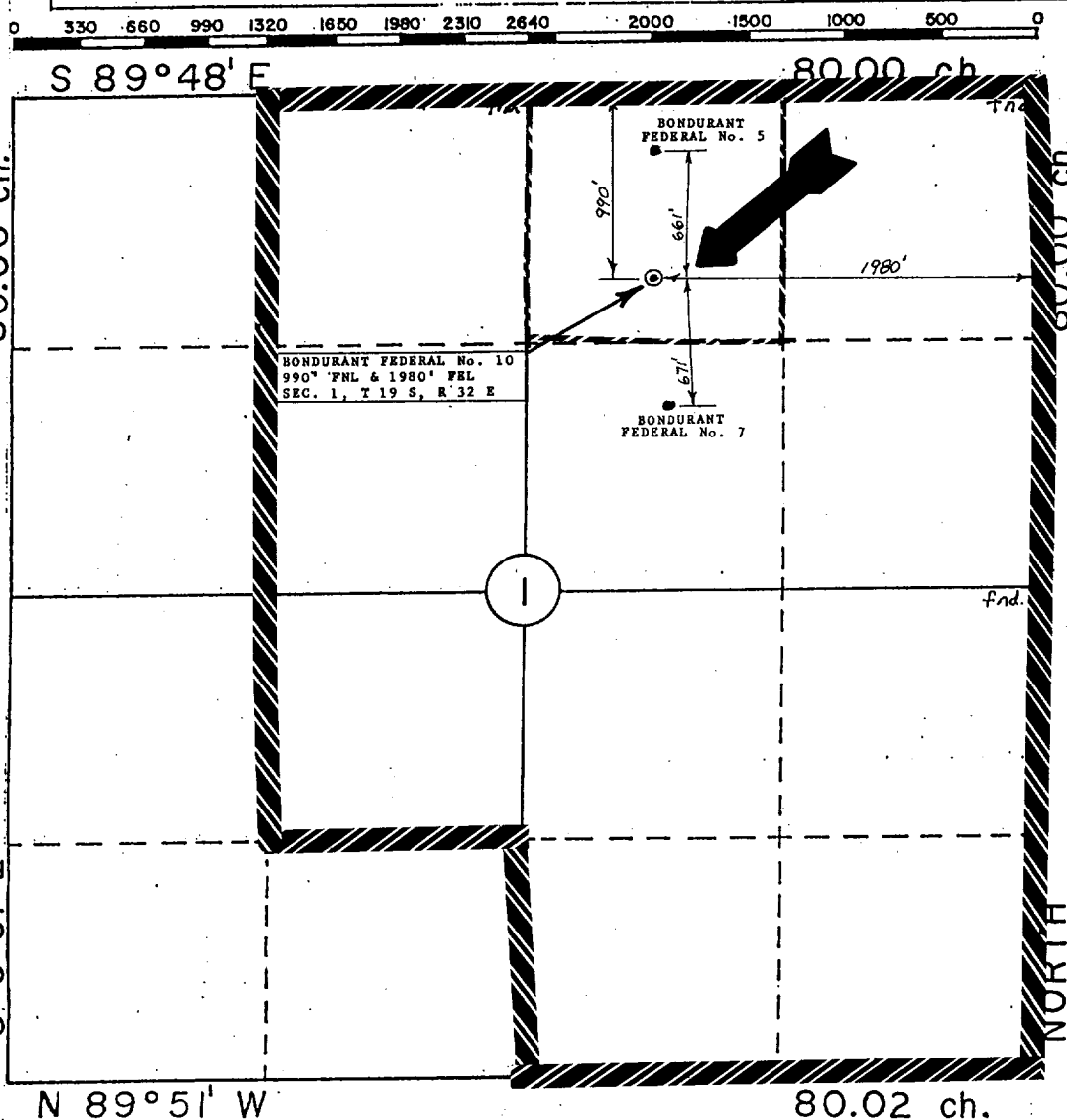
DISTRICT III
1000 Rio Brazos Rd., Aztec, NM 87410

WELL LOCATION AND ACREAGE DEDICATION PLAT

All Distances must be from the outer boundaries of the section

Operator MERIDIAN OIL INC.			Lease BONDURANT FEDERAL		Well No. 10
Unit Letter B	Section 1	Township 19 SOUTH	Range 32 EAST,	NMPM	County LEA
Actual Footage Location of Well: 990 feet from the NORTH line and 1980 feet from the EAST line					
Ground level Elev. 3693	Producing Formation Yates		Pool Buffalo		Dedicated Acreage: 40 Acres

- Outline the acreage dedicated to the subject well by colored pencil or hatchure marks on the plat below.
- If more than one lease is dedicated to the well, outline each and identify the ownership thereof (both as to working interest and royalty).
- If more than one lease of different ownership is dedicated to the well, have the interest of all owners been consolidated by communitization, unitization, force-pooling, etc.?
☐ Yes ☐ No If answer is "yes" type of consolidation _____
If answer is "no" list the owners and tract descriptions which have actually been consolidated. (Use reverse side of this form if necessary.)
No allowable will be assigned to the well until all interests have been consolidated (by communitization, unitization, forced-pooling, or otherwise) or until a non-standard unit, eliminating such interest, has been approved by the Division.



OPERATOR CERTIFICATION

I hereby certify that the information contained herein is true and complete to the best of my knowledge and belief.

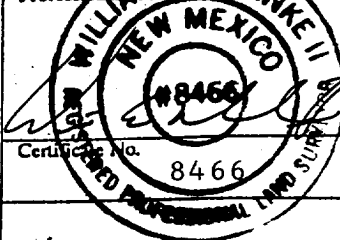
Signature
Donna Williams
Printed Name
Production Assistant
Position
Meridian Oil Inc.
Company
1/10/94
Date

SURVEYOR CERTIFICATION

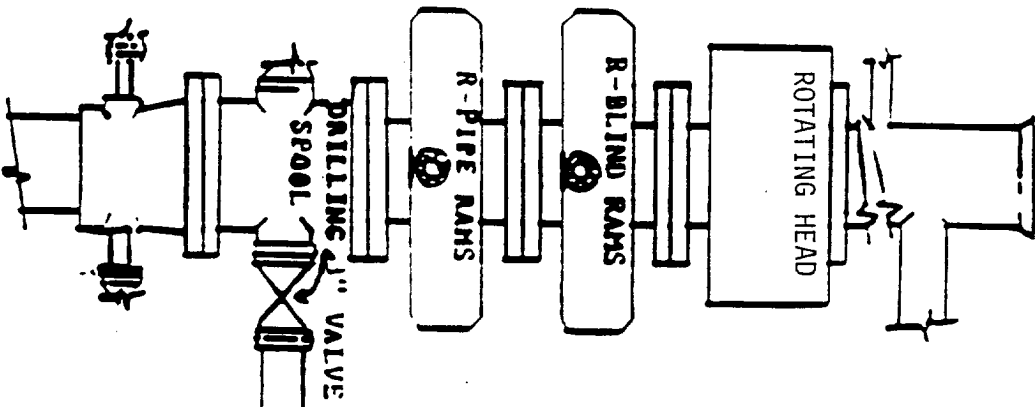
I hereby certify that the well location shown on this plat was plotted from field notes of actual surveys made by me or under my supervision, and that the same is true and correct to the best of my knowledge and belief.

12-13-93

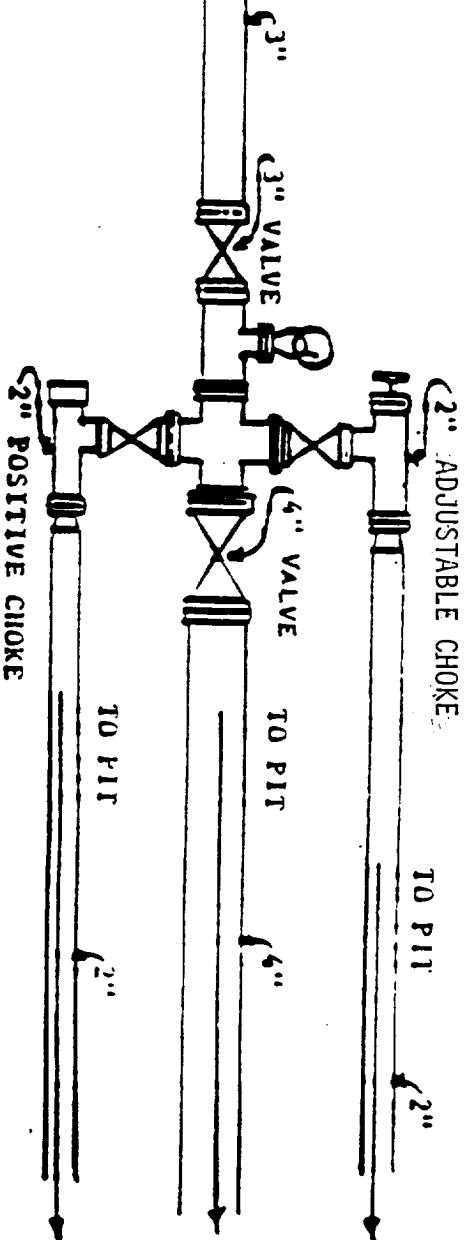
Date Surveyed
WILLIAM E. MAHNKE II
Signature of Professional Surveyor



DOUBLE RAM



BLOW OUT PREVENTION EQUIPMENT
 10" 900S ALL FLANGED CONNECTIONS
 3000# WORKING PRESSURE _ 6000# TEST



OPERATORS NAME:	Meridian Oil Inc.
LEASE NAME AND WELL NO.:	Bondurant Federal No. 10
LOCATION:	990' FNL & 1980' FEL, Sec. 1, T19S, R32E
FIELD NAME:	Buffalo Yates
COUNTY:	Lea County, NM
LEASE NUMBER:	NM-12568 A

The following information is to supplement BLM form 3160-3 Application for permit to drill in accordance with Onshore Oil and Gas Order No. 1:

9 - POINT DRILLING PLAN

1. Name and estimated tops of important geologic formation/marker horizons.

FORMATION	DEPTH
Red Beds	1,450
Salt Base	2,950
Yates	3,430

2. Estimated depths at which the top and bottom of formations potentially containing usable water, oil, gas, or prospectively valuable deposits of other minerals are expected to be encountered and the operator's plans for protecting such resources.

Yates	3,430 (Oil)
-------	-------------

3. The operator's minimum specifications for Blowout Preventer (BOP) and related equipment to be used and schematic diagrams thereof showing sizes, pressure ratings, and the testing procedures and testing frequency. BOP and BOP - related equipment (BOPE) schematics shall include schematics of choke manifold equipment. Accumulator systems and remote controls shall be utilized.

10" 3-M BOP stack to be installed on 8 5/8" and left for the remainder of drilling.

4. The proposed casing program including size, grade, weights, type of thread and coupling, and the setting depth of each string and its condition (new or acceptably reconditioned). For exploratory wells, or for wells as otherwise specified by the authorized officer, the operator shall include the minimum design factors for tensions, burst, and collapse that are incorporated into the casing design. In cases where tapered casing strings are utilized, the operator shall also include and/or setting depths of each portion.

- 12 1/4 hole, 8 5/8" K-55 28 # BTC csg set @ 600'.
- 7 7/8" hole, 5 1/2" K-55 15.5# LTC csg set @ 3800'

5. The amount and type(s) of cement, including anticipated additives to be used in setting each casing string, shall be described. If stage cementing techniques are to be employed, the setting depth of the stage collars and amount and type of cement, including additives, and preflush amounts to be used in each stage, shall be given. The expected linear fill-up of each cemented string, or each stage when utilizing stage-cementing techniques, shall also be given.

- a. 8 5/8" csg: Cmt w/400sxs. Class "C" & 2% CaCl₂ + 1/4 pps Flocele; Circ. to surface.
- b. 5 1/2" csg: Cmt w/
LEAD: 700 sxs Class "C" Lite + 1/4 pps Flocele
TAIL: 300 sxs Class "C" + 2% CaCl₂.
Circulate to Surface

6. The anticipated characteristics, additives, use, and testing of drilling mud to be employed, along with the types and quantities of mud products to be maintained, shall be given. When air or gas drilling is proposed, the operator shall submit the following specific information:

Mud Program:

0-600' Fresh water gel and lime; 600 -3800' salt water w/MW 9.8 -10.2.

No abnormal pressures or temperatures expected.

7. The anticipated testing, logging, and coring procedures to be used, including drill stem testing procedures, equipment, and safety measures.

- a. DST Program: None
- b. Core: None
- c. Mud Logging: Two-man unit 2500' to TD.

d. Logs to be run: CNL/LDT/DLL/MSFL/GR/CAL TD - SCP
(GR/CNL TO SURFACE)

8. The expected bottom-hole pressure and any anticipated abnormal pressures, temperatures or potential hazards that are expected to be encountered, such as lost circulation zones and hydrogen sulfide. The operator's plans for mitigating such hazards shall be discussed. Should the potential to encounter hydrogen sulfide exist, the mitigation procedures shall comply with the provisions of Onshore Oil and Gas Order No. 6.

No abnormal pressures are anticipated. bottom hole pressures at TD expected to be 1500 psi. Bottom hole temperature 110° F. No Hydrogen Sulfide expected in this known drilling area.

9. Any other facets of the proposed operation which the operator wishes for BLM to consider in reviewing the application.

Anticipated drilling time expected to be 7 days from surface to TD.