

**DISTRICT I**

P.O. Box 1980, Hobbs, NM 88241-1980

**DISTRICT II**

P.O. Box Drawer DD, Artesia, NM 88211-0719

**DISTRICT III**

1000 Rio Brazos Rd., Aztec, NM 87410

**DISTRICT IV**

P.O. Box 2088, Santa Fe, NM 87504-2088

State of New Mexico  
Energy, Minerals and Natural Resources Department**OIL CONSERVATION DIVISION**P.O. Box 2088  
Santa Fe, New Mexico 87504-2088

Form C-101

Revised February 10, 1994

Instructions on back

Submit to Appropriate District Office

State Lease - 6 Copies

Fee Lease - 5 Copies

☐ AMENDED REPORT**APPLICATION FOR PERMIT TO DRILL, RE-ENTER, DEEPEN, PLUGBACK, OR ADD A ZONE**

<sup>1</sup> Operator Name and Address TEXACO EXPLORATION & PRODUCTION INC. P.O. Box 3109, Midland Texas 79702		<sup>2</sup> OGRID Number 022351
		<sup>3</sup> API Number 30-025-32792
<sup>4</sup> Property Code 11122	<sup>5</sup> Property Name CENTRAL VACUUM UNIT	<sup>6</sup> Well No. 204

**7 Surface Location**

Ul or lot no.	Section	Township	Range	Lot.Idn	Feet From The	North/South Line	Feet From The	East/West Line	County
E	6	18-S	35-E		1994	NORTH	1073	WEST	LEA

**8 Proposed Bottom Hole Location If Different From Surface**

Ul or lot no.	Section	Township	Range	Lot.Idn	Feet From The	North/South Line	Feet From The	East/West Line	County

<sup>9</sup> Proposed Pool 1 VACUUM GRAYBURG-SAN ANDRES	<sup>10</sup> Proposed Pool 2
--	-------------------------------

<sup>11</sup> Work Type Code N	<sup>12</sup> WellType Code O	<sup>13</sup> Rotary or C.T. ROTARY	<sup>14</sup> Lease Type Code S	<sup>15</sup> Ground Level Elevation 3969'
<sup>16</sup> Multiple No	<sup>17</sup> Proposed Depth 4850'	<sup>18</sup> Formation GRAYBURG-SAN ANDRES	<sup>19</sup> Contractor	<sup>20</sup> Spud Date 1/10/95

**21 Proposed Casing and Cement Program**

SIZE OF HOLE	SIZE OF CASING	WEIGHT PER FOOT	SETTING DEPTH	SACKS OF CEMENT	EST. TOP
11	8 5/8	24#	1535'	585 SACKS	SURFACE
7 7/8	5 1/2	15.5#	4850'	1200 SACKS	SURFACE

22 Describe the proposed program. If this application is to DEEPEN or PLUG BACK give the data on the present productive zone and proposed new productive zone.  
Describe the blowout prevention program, if any. Use additional sheets if necessary.

**CEMENTING PROGRAM:**

SURFACE CASING - 435 SACKS CLASS C w/4% GEL, 2% CACL2 (13.5 PPG, 1.74 CF/S, 9.1 GW/S). F/B 150 SACKS CLASS C w/ 2% CACL2 (14.8, 1.34 CF/S, 6.3 GW/S).

PRODUCTION CASING - 1000 SACKS 35/65 POZ CLASS H w/ 6% GEL, 5% SALT, 1/4# FLOCELE (12.8 PPG, 1.94 CF/S, 10.4 GW/S). F/B 200 SACKS CLASS H (15.6 PPG, 1.18 CF/S, 5.2 GW/S).

Permit Expires 6 Months From Approval Date Unless Drilling Underway.

UNORTHODOX LOCATION: EXCEPTION HAS BEEN APPLIED FOR. (COPY ATTACHED)

MARATHON OPERATES A WELL IN THIS QUARTER QUARTER SECTION AND HAS BEEN FURNISHED A COPY OF THIS APPLICATION.

<sup>23</sup> I hereby certify that the rules and regulations of the Oil Conservation Division have been complied with and that the information given above is true and complete to the best of my knowledge and belief.		<b>OIL CONSERVATION DIVISION</b>	
Signature <i>C. Wade Howard</i>		Orig. Signed by Approved By: Paul Kutz Geologist	
Printed Name C. Wade Howard		Title: Geologist	
Title Eng. Assistant		Approval Date: JAN 11 1995	Expiration Date:
Date 12/15/94	Telephone 688-4606	Conditions of Approval: Attached <input type="checkbox"/>	

**RECEIVED**  
DEC 1 3 1934  
O C D HOBBS  
OFFICE

DISTRICT I  
P. O. Box 1980, Hobbs, NM 88240

DISTRICT II  
P. O. Drawer DD, Artesia, NM 88210

DISTRICT III  
1000 Rio Brazos Rd., Aztec, NM 87410

DISTRICT IV  
P. O. Box 2088, Santa Fe, NM 87504-2088

State of New Mexico  
Energy, Minerals and Natural Resources Department

OIL CONSERVATION DIVISION

PO Box 2088  
Santa Fe, NM 87504-2088

Form C-102  
Revised February 10, 1994

Instructions on back

Submit to Appropriate District Office

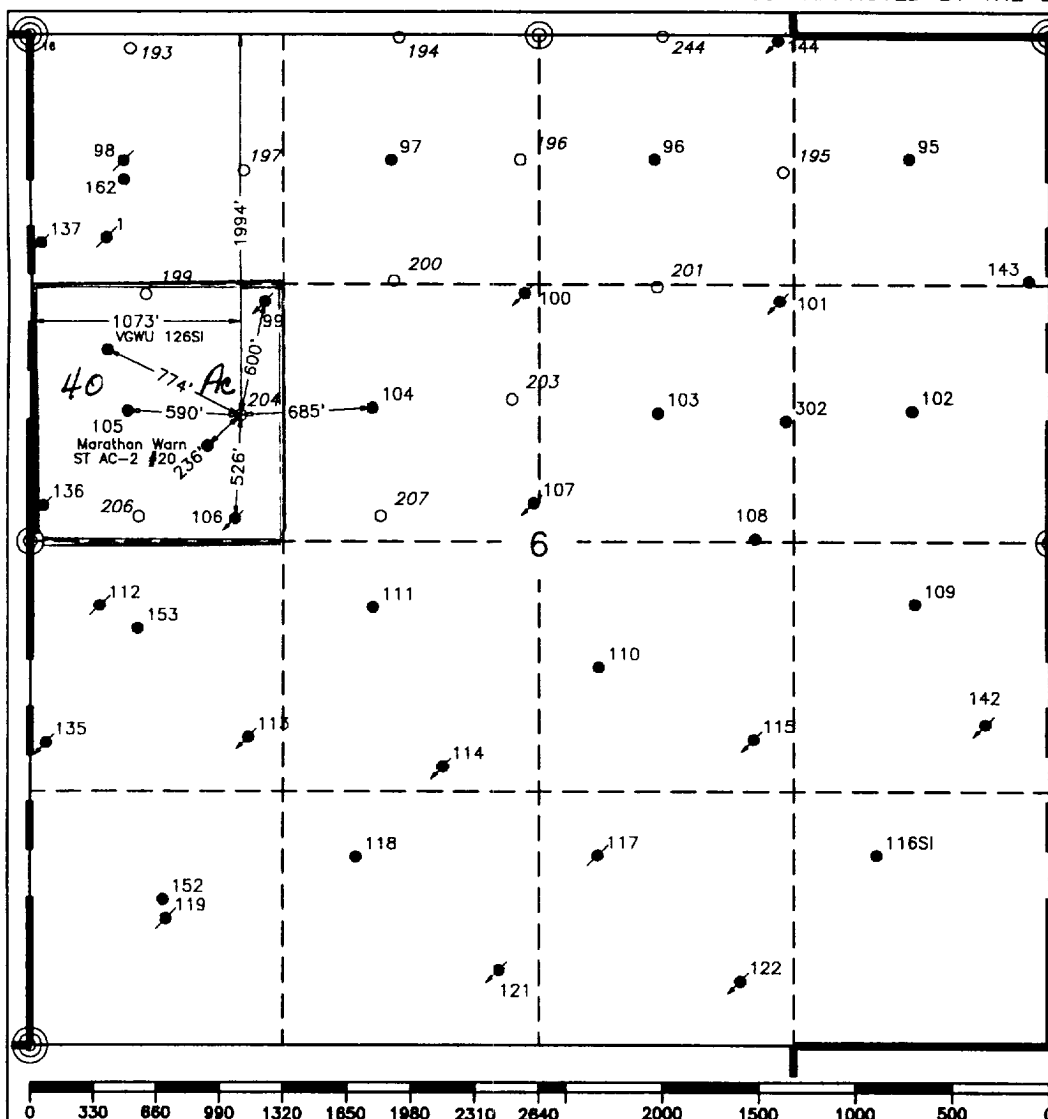
State Lease-4 copies  
Fee Lease-3 copies

☐ AMENDED REPORT

WELL LOCATION AND ACREAGE DEDICATION PLAT

<sup>1</sup> API Number 32-025-32792		<sup>2</sup> Pool Code 62180		<sup>3</sup> Pool Name Vacuum Grayburg-San Andres					
<sup>4</sup> Property Code 11122		<sup>5</sup> Property Name Central Vacuum Unit				<sup>6</sup> Well Number 204			
<sup>7</sup> GRID No. 22351		<sup>8</sup> Operator Name TEXACO EXPLORATION & PRODUCTION, INC.				<sup>9</sup> Elevation 3969'			
<sup>10</sup> Surface Location									
UL or lot no. E	Section 6	Township 18-S	Range 35-E	Lot Idn	Feet from the 1994'	North/South line North	Feet from the 1073'	East/West line West	<sup>7</sup> County Lea
<sup>11</sup> Bottom Hole Location If Different From Surface									
UL or lot no.	Section	Township	Range	Lot Idn	Feet from the	North/South line	Feet from the	East/West line	<sup>7</sup> County
<sup>12</sup> Dedicated Acres 40		<sup>13</sup> Joint or Infill		<sup>14</sup> Consolidation Code		<sup>15</sup> Order No.			

NO ALLOWABLE WILL BE ASSIGNED TO THIS COMPLETION UNTIL ALL INTERESTS HAVE BEEN CONSOLIDATED  
OR A NON-STANDARD UNIT HAS BEEN APPROVED BY THE DIVISION.

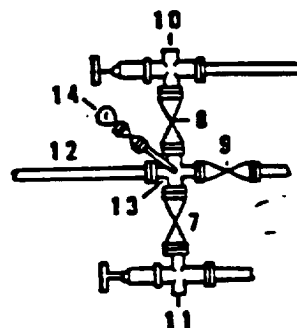
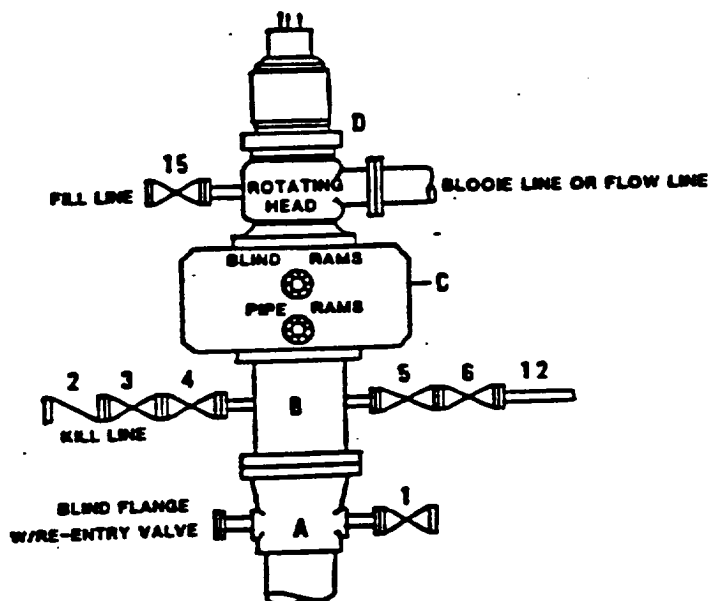


<sup>16</sup> OPERATOR CERTIFICATION	
I hereby certify that the information contained herein is true and complete to the best of my knowledge and belief.	
Signature C. Wade Howard	
Printed Name C. Wade Howard	
Position Asst. Technician	
Company Texaco Expl. & Prod. Inc.	
Date December 5, 1994	
<sup>17</sup> SURVEYOR CERTIFICATION	
I hereby certify that the well location shown on this plat was plotted from field notes of actual surveys made by me or under my supervision, and that the same is true and correct to the best of my knowledge and belief.	
Date Surveyed December 1, 1994	
Signature & Seal of Professional Surveyor John S. Piper	
Certificate No. 7254 John S. Piper	
Sheet	

**RECEIVED**  
JUN 16 1964  
C/O D. HOBBS  
OFFICE

**DRILLING CONTROL  
CONDITION II-B 3000 WP  
FOR AIR DRILLING OR  
WHERE NITROGEN OR AIR BLOWS ARE EXPECTED**

H<sub>2</sub>S TRIM REQUIRED  
YES   X   NO       



**DRILLING CONTROL  
MATERIAL LIST - CONDITION II - B**

- |                |   |
|----------------|---|
| A              | Texaco Wellhead   |
| B              | 3000# W.P. drilling spool with a 2" minimum flanged outlet for kill line and 3" minimum flanged outlet for choke line.  |
| C              | 3000# W.P. Dual ram type preventer, hydraulic operated with 1" steel, 3000# W.P. control lines (where sub-structure height is adequate, 2 - 3000# W.P. single ram type preventers may be utilized). |
| D              | Rotating Head with fill up outlet and extended Blooe Line.  |
| 1,3,4,<br>7,8, | 2" minimum 3000# W.P. flanged full opening steel gate valve, or Malliburton Lo Torc Plug valve.   |
| 2              | 2" minimum 3000# W.P. back pressure valve.  |
| 5,6,9          | 3" minimum 3000# W.P. flanged full opening steel gate valve, or Malliburton Lo Torc Plug valve.   |
| 12             | 3" minimum schedule 80, Grade "B", seamless line pipe.  |
| 13             | 2" minimum x 3" minimum 3000# W.P. flanged cross.   |
| 10,11          | 2" minimum 3000# W.P. adjustable choke bodies.  |
| 14             | Cameron Mud Gauge or equivalent ( location optional in choke line).   |
| 15             | 2" minimum 3000# W.P. flanged or threaded full opening steel gate valve, or Malliburton Lo Torc Plug valve.   |



**TEXACO, INC.**  
MIDLAND DIVISION  
MIDLAND, TEXAS



SCALE	DATE	EST. NO.	DRG. NO.
DRAWN BY			
CHECKED BY			
APPROVED BY			

**EXHIBIT C**

**RECEIVED**

DEC 19 1994  
OCD HOBBS  
OFFICE



December 8, 1994

GOV - STATE AND LOCAL GOVERNMENTS

Unorthodox Locations

Central Vacuum Unit

Well Nos. 193, 194, 196, 197, 199,  
200, 201, 203, 204, 206, and 207

Lea County, New Mexico

State of New Mexico

Energy and Minerals Department

Oil Conservation Division

P. O. Box 2088

Santa Fe, New Mexico 87501-2088

Attention: Mr. Michael E. Stogner

Gentlemen:

An Exception to Rule 104 F.I. by administrative approval is requested for Texaco Exploration and Production Inc.'s Central Vacuum Unit Well Nos. 193, 194, 196, 197, 199, 200, 201, 203, 204, 206, and 207. See attached list for well locations.

These wells must be drilled at these locations to ensure proper development of 10-acre spacing. Wells drilled previously on 10-acre spacing have proven to be viable wells. They will be completed in the Grayburg San Andres formation. Well Nos. 196, 197, 203, and 204 will be producing wells and Well Nos. 193, 194, 199, 200, 201, 206, and 207 will be water injection wells.

Texaco Exploration and Production Inc. is the only "affected offset operator" to Well Nos. 193, 197, 199, 204 and 206. We grant ourselves a waiver to the unorthodox locations. There are no "affected offset operators" to Well Nos. 194, 196, 200, 201, 203, and 207. Attached is Form C-102 for each well and a lease plat showing the location of the subject wells.

Any questions concerning this request should be directed to Mr. C. W. Howard at (915) 688-4606.

Yours very truly,

J. A. Head

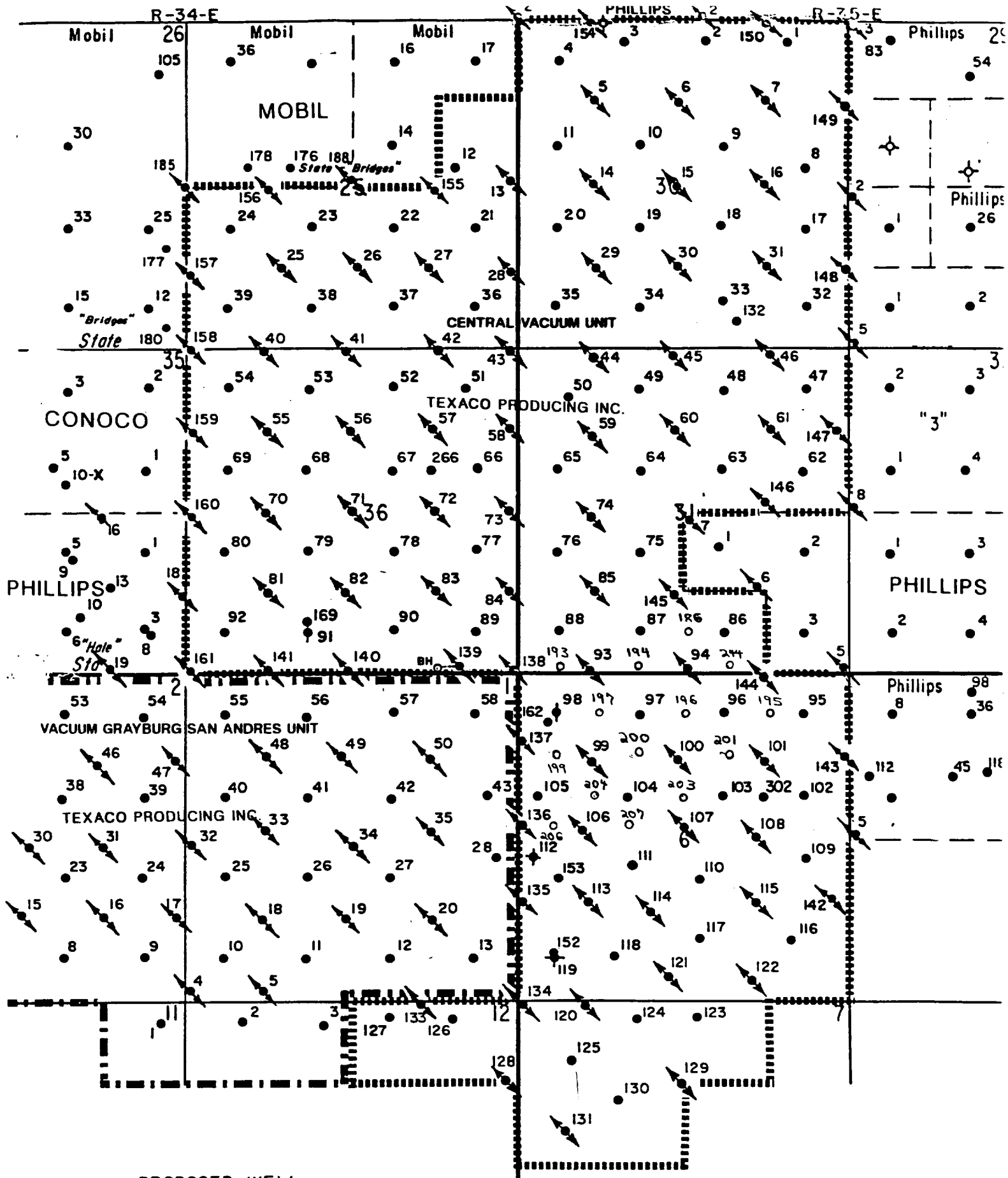
Asset Team Manager

CWH:cwh cc: NMOCD, Hobbs, NM

CENTRAL VACUUM UNIT

WELL LOCATIONS

WELL NO. 193:	101'	FNL &	534'	FWL OF SEC. 6,	T-18-S,	R-35-E
WELL NO. 194:	14'	FNL &	1917'	FWL OF SEC. 6,	T-18-S,	R-35-E
WELL NO. 196:	649'	FNL &	2535'	FWL OF SEC. 6,	T-18-S,	R-35-E
WELL NO. 197:	717'	FNL &	1093'	FWL OF SEC. 6,	T-18-S,	R-35-E
WELL NO. 199:	1372'	FNL &	584'	FWL OF SEC. 6,	T-18-S,	R-35-E
WELL NO. 200:	1301'	FNL &	1875'	FWL OF SEC. 6,	T-18-S,	R-35-E
WELL NO. 201:	1360'	FNL &	1973'	FEL OF SEC. 6,	T-18-S,	R-35-E
WELL NO. 203:	1913'	FNL &	2476'	FWL OF SEC. 6,	T-18-S,	R-35-E
WELL NO. 204:	1994'	FNL &	1073'	FWL OF SEC. 6,	T-18-S,	R-35-E
WELL NO. 206:	2509'	FNL &	536'	FWL OF SEC. 6,	T-18-S,	R-34-E
WELL NO. 207:	2500'	FNL &	1825'	FWL OF SEC. 6,	T-18-S,	R-35-E



- PROPOSED WELL
- PRODUCING WELL
- ↗ INJECTION WELL
- ⋮ SHUT-IN WELL

TEXACO  
CENTRAL VACUUM UNIT  
VACUUM G-SA FIELD  
LEA COUNTY, NEW MEXICO