

DISTRICT I

P.O. Box 1980, Hobbs, NM 88241-1980

DISTRICT II

P.O. Box Drawer DD, Artesia, NM 88211-0719

DISTRICT III

1000 Rio Brazos Rd., Aztec, NM 87410

DISTRICT IV

P.O. Box 2088, Santa Fe, NM 87504-2088

State of New Mexico

Energy, Minerals and Natural Resources Department

OIL CONSERVATION DIVISION

P.O. Box 2088

Santa Fe, New Mexico 87504-2088

Form C-101

Revised February 10, 1994

Instructions on back

Submit to Appropriate District Office

State Lease - 6 Copies

Fee Lease - 5 Copies

☐ AMENDED REPORT

APPLICATION FOR PERMIT TO DRILL, RE-ENTER, DEEPEN, PLUGBACK, OR ADD A ZONE

| | | |
|--|---|---|
| ¹ Operator Name and Address TEXACO EXPLORATION & PRODUCTION INC. P.O. Box 3109, Midland Texas 79702 | | ² OGRID Number 022351 |
| | | ³ API Number 30-025-32805 |
| ⁴ Property Code 11122 | ⁵ Property Name CENTRAL VACUUM UNIT | ⁶ Well No. 200 |

⁷ Surface Location

| UI or lot no. | Section | Township | Range | Lot.Idn | Feet From The | North/South Line | Feet From The | East/West Line | County |
|---------------|---------|----------|-------|---------|---------------|------------------|---------------|----------------|--------|
| C | 6 | 18-S | 35-E | | 1301 | NORTH | 1875 | WEST | LEA |

⁸ Proposed Bottom Hole Location If Different From Surface

| UI or lot no. | Section | Township | Range | Lot.Idn | Feet From The | North/South Line | Feet From The | East/West Line | County |
|---------------|---------|----------|-------|---------|---------------|------------------|---------------|----------------|--------|
| | | | | | | | | | |

⁹ Proposed Pool 1

VACUUM GRAYBURG-SAN ANDRES

¹⁰ Proposed Pool 2

| | | | | |
|-----------------------------------|---------------------------------------|--|------------------------------------|---|
| ¹¹ Work Type Code N | ¹² WellType Code I | ¹³ Rotary or C.T. ROTARY | ¹⁴ Lease Type Code S | ¹⁵ Ground Level Elevation 3975' |
| ¹⁶ Multiple No | ¹⁷ Proposed Depth 4850' | ¹⁸ Formation GRAYBURG-SAN ANDRES | ¹⁹ Contractor | ²⁰ Spud Date 1/10/95 |

²¹ Proposed Casing and Cement Program

| SIZE OF HOLE | SIZE OF CASING | WEIGHT PER FOOT | SETTING DEPTH | SACKS OF CEMENT | EST. TOP |
|--------------|----------------|-----------------|---------------|-----------------|----------|
| 11 | 8 5/8 | 24# | 1535' | 585 SACKS | SURFACE |
| 7 7/8 | 5 1/2 | 15.5# | 4850' | 1200 SACKS | SURFACE |
| | | | | | |
| | | | | | |

²² Describe the proposed program. If this application is to DEEPEN or PLUG BACK give the data on the present productive zone and proposed new productive zone. Describe the blowout prevention program, if any. Use additional sheets if necessary.

CEMENTING PROGRAM:

SURFACE CASING - 435 SACKS CLASS C w/4% GEL, 2% CACL2 (13.5 PPG, 1.74 CF/S, 9.1 GW/S). F/B 150 SACKS CLASS C w/ 2% CACL2 (14.8, 1.34 CF/S, 6.3 GW/S).

PRODUCTION CASING - 1000 SACKS 35/65 POZ CLASS H w/ 6% GEL, 5% SALT, 1/4# FLOCELE (12.8 PPG, 1.94 CF/S, 10.4 GW/S). F/B 200 SACKS CLASS H (15.6 PPG, 1.18 CF/S, 5.2 GW/S).

UNORTHODOX LOCATION: EXCEPTION HAS BEEN APPLIED FOR. (COPY ATTACHED)

MARATHON OPERATES A WELL IN THIS QUARTER QUARTER SECTION AND HAS BEEN FURNISHED A COPY OF THIS APPLICATION.

Permit Expires 6 Months From Approval
Date Unless Drilling Underway

²³ I hereby certify that the rules and regulations of the Oil Conservation Division have been complied with and that the information given above is true and complete to the best of my knowledge and belief.

Signature

C. Wade Howard

Printed Name

C. Wade Howard

Title Eng. Assistant

Date 12/15/94

Telephone 688-4606

OIL CONSERVATION DIVISION

Approved By:

ORIGINAL SIGNED BY JERRY SEXTON

Title:

DISTRICT I SUPERVISOR

Approval Date:

JAN 10 1995

Expiration Date:

Conditions of Approval:

Attached ☐

DISTRICT I
P. O. Box 1980, Hobbs, NM 88240

DISTRICT II
P. O. Drawer DD, Artesia, NM 88210

DISTRICT III
1000 Rio Brazos Rd., Aztec, NM 87410

DISTRICT IV
P. O. Box 2088, Santa Fe, NM 87504-2088

State of New Mexico
Energy, Minerals and Natural Resources Department

OIL CONSERVATION DIVISION

PO Box 2088
Santa Fe, NM 87504-2088

Form C-102
Revised February 10, 1994

Instructions on back

Submit to Appropriate District Office

State Lease-4 copies
Fee Lease-3 copies

☐ AMENDED REPORT

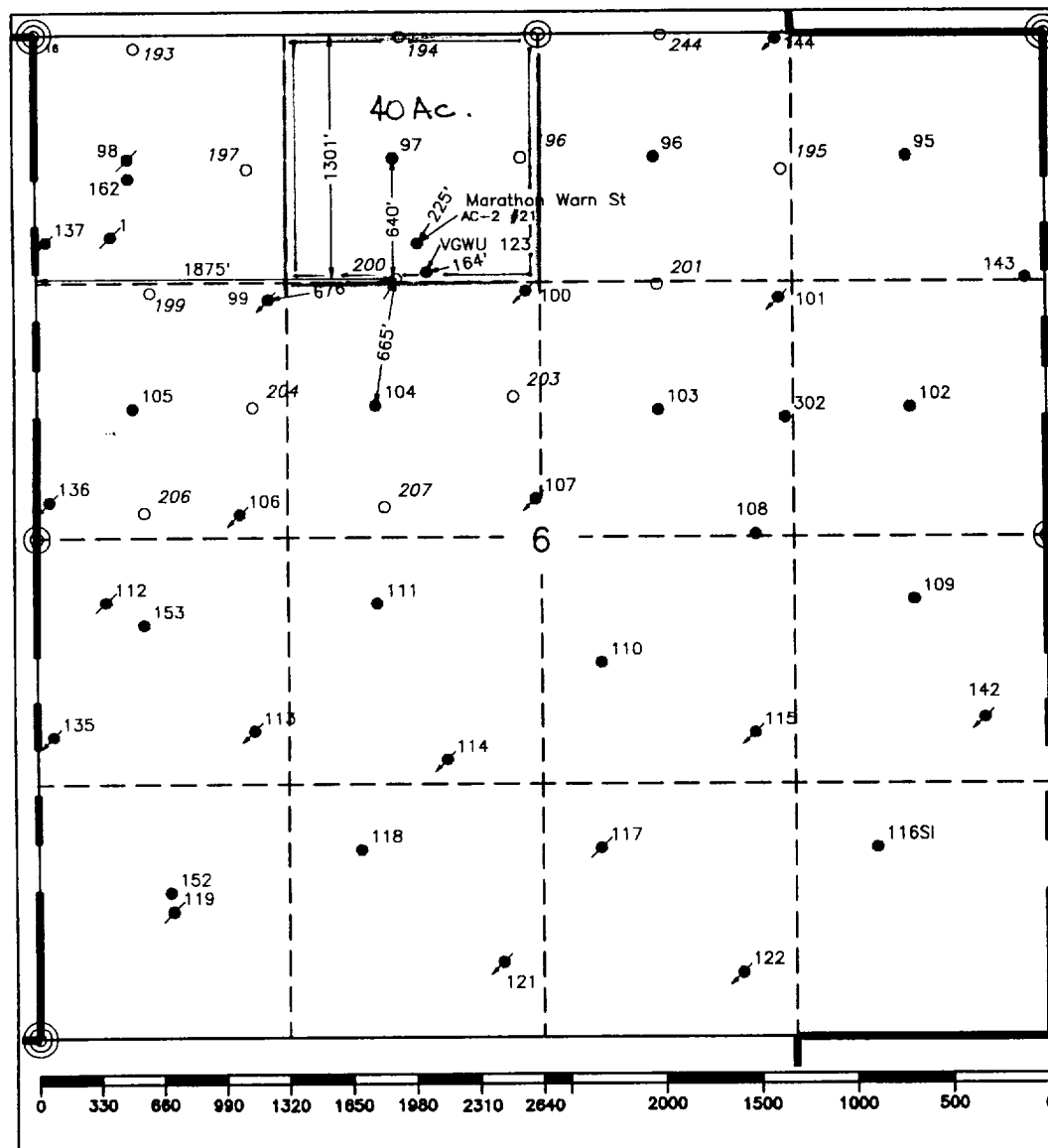
WELL LOCATION AND ACREAGE DEDICATION PLAT

| | | | | | |
|--|--|---|--|--|--|
| ¹ API Number 30 225-32505 | | ² Pool Code 62180 | | ³ Pool Name Vacuum Grayburg-San Andres | |
| ⁴ Property Code 11122 | | ⁵ Property Name Central Vacuum Unit | | | |
| ⁶ OGRID No. 22351 | | ⁸ Well Number 200 | | | |
| | | ⁹ Elevation 3975' | | | |
| ¹⁰ Operator Name TEXACO EXPLORATION & PRODUCTION, INC. | | | | | |

| | | | | | | | | | |
|--------------------------------|--------------|------------------|---------------|---------|------------------------|---------------------------|------------------------|------------------------|----------------------------|
| ¹⁰ Surface Location | | | | | | | | | |
| UL or lot no. C | Section 6 | Township 18-S | Range 35-E | Lot Idn | Feet from the 1301' | North/South line North | Feet from the 1875' | East/West line West | ⁷ County Lea |

| | | | | | | | | | |
|--|---------|----------|-------|---------|---------------|------------------|---------------|----------------|---------------------|
| ¹¹ Bottom Hole Location If Different From Surface | | | | | | | | | |
| UL or lot no. | Section | Township | Range | Lot Idn | Feet from the | North/South line | Feet from the | East/West line | ⁷ County |
| ¹² Dedicated Acres 40 | | | | | | | | | |
| ¹³ Joint or Infill | | | | | | | | | |
| ¹⁴ Consolidation Code | | | | | | | | | |
| ¹⁵ Order No. | | | | | | | | | |

NO ALLOWABLE WILL BE ASSIGNED TO THIS COMPLETION UNTIL ALL INTERESTS HAVE BEEN CONSOLIDATED
OR A NON-STANDARD UNIT HAS BEEN APPROVED BY THE DIVISION.



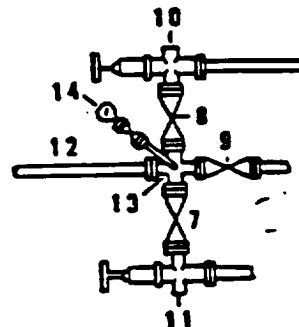
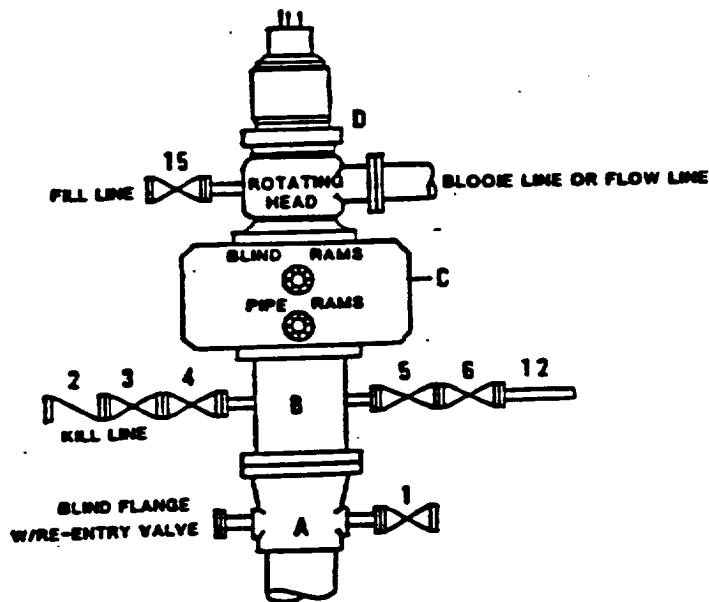
| | |
|---|--|
| ¹⁶ OPERATOR CERTIFICATION | |
| I hereby certify that the information contained herein is true and complete to the best of my knowledge and belief. | |
| Signature C. Wade Howard | |
| Printed Name C. Wade Howard | |
| Position Asst. Technician | |
| Company Texaco Expl. & Prod. Inc. | |
| Date December 5, 1994 | |
| ¹⁸ SURVEYOR CERTIFICATION | |
| I hereby certify that the well location shown on this plat was plotted from field notes of actual surveys made by me or under my supervision, and that the same is true and correct to the best of my knowledge and belief. | |
| Date Surveyed November 30, 1994 | |
| Signature & Seal of Professional Surveyor John S. Piper | |
| Certificate No. 7254 John S. Piper | |
| Sheet | |

RECEIVED

DEC 19 1994
O C D HOBBS
OFFICE

**DRILLING CONTROL
CONDITION II-B 3000 WP
FOR AIR DRILLING OR
WHERE NITROGEN OR AIR BLOWS ARE EXPECTED**

H₂S TRIM REQUIRED
YES X NO



**DRILLING CONTROL
MATERIAL LIST - CONDITION II - B**

- A Texaco Wellhead
- B 3000# W.P. drilling spool with a 2" minimum flanged outlet for kill line and 3" minimum flanged outlet for choke line.
- C 3000# W.P. Dual ram type preventer, hydraulic operated with 1" steel, 3000# W.P. control lines (where sub-structure height is adequate, 2 - 3000# W.P. single ram type preventers may be utilized).
- D Rotating Head with fill up outlet and extended Blooe Line.
- 1,3,4,7,8 2" minimum 3000# W.P. flanged full opening steel gate valve, or Malliburton Lo Torc Plug valve.
- 2 2" minimum 3000# W.P. back pressure valve.
- 5,6,9 3" minimum 3000# W.P. flanged full opening steel gate valve, or Malliburton Lo Torc Plug valve.
- 12 3" minimum schedule 80, Grade "B", seamless line pipe.
- 13 2" minimum x 3" minimum 3000# W.P. flanged cross.
- 10,11 2" minimum 3000# W.P. adjustable choke bodies.
- 14 Cameron Mud Gauge or equivalent (location optional in choke line).
- 15 2" minimum 3000# W.P. flanged or threaded full opening steel gate valve, or Malliburton Lo Torc Plug valve.



TEXACO, INC.
MIDLAND DIVISION
MIDLAND, TEXAS



| SCALE | DATE | EST. NO. | DRG. NO. |
|-------------|------|----------|----------|
| DRAWN BY | | | |
| CHECKED BY | | | |
| APPROVED BY | | | |

EXHIBIT C

RECEIVED

DEC 1 9 1964
O C D HOBBY
OFFICE



December 8, 1994

GOV - STATE AND LOCAL GOVERNMENTS

Unorthodox Locations

Central Vacuum Unit

Well Nos. 193, 194, 196, 197, 199,
200, 201, 203, 204, 206, and 207

Lea County, New Mexico

State of New Mexico

Energy and Minerals Department

Oil Conservation Division

P. O. Box 2088

Santa Fe, New Mexico 87501-2088

Attention: Mr. Michael E. Stogner

Gentlemen:

An Exception to Rule 104 F.I. by administrative approval is requested for Texaco Exploration and Production Inc.'s Central Vacuum Unit Well Nos. 193, 194, 196, 197, 199, 200, 201, 203, 204, 206, and 207. See attached list for well locations.

These wells must be drilled at these locations to ensure proper development of 10-acre spacing. Wells drilled previously on 10-acre spacing have proven to be viable wells. They will be completed in the Grayburg San Andres formation. Well Nos. 196, 197, 203, and 204 will be producing wells and Well Nos. 193, 194, 199, 200, 201, 206, and 207 will be water injection wells.

Texaco Exploration and Production Inc. is the only "affected offset operator" to Well Nos. 193, 197, 199, 204 and 206. We grant ourselves a waiver to the unorthodox locations. There are no "affected offset operators" to Well Nos. 194, 196, 200, 201, 203, and 207. Attached is Form C-102 for each well and a lease plat showing the location of the subject wells.

Any questions concerning this request should be directed to Mr. C. W. Howard at (915) 688-4606.

Yours very truly,

J. A. Head

Asset Team Manager

CWH:cwh cc: NMOCD, Hobbs, NM

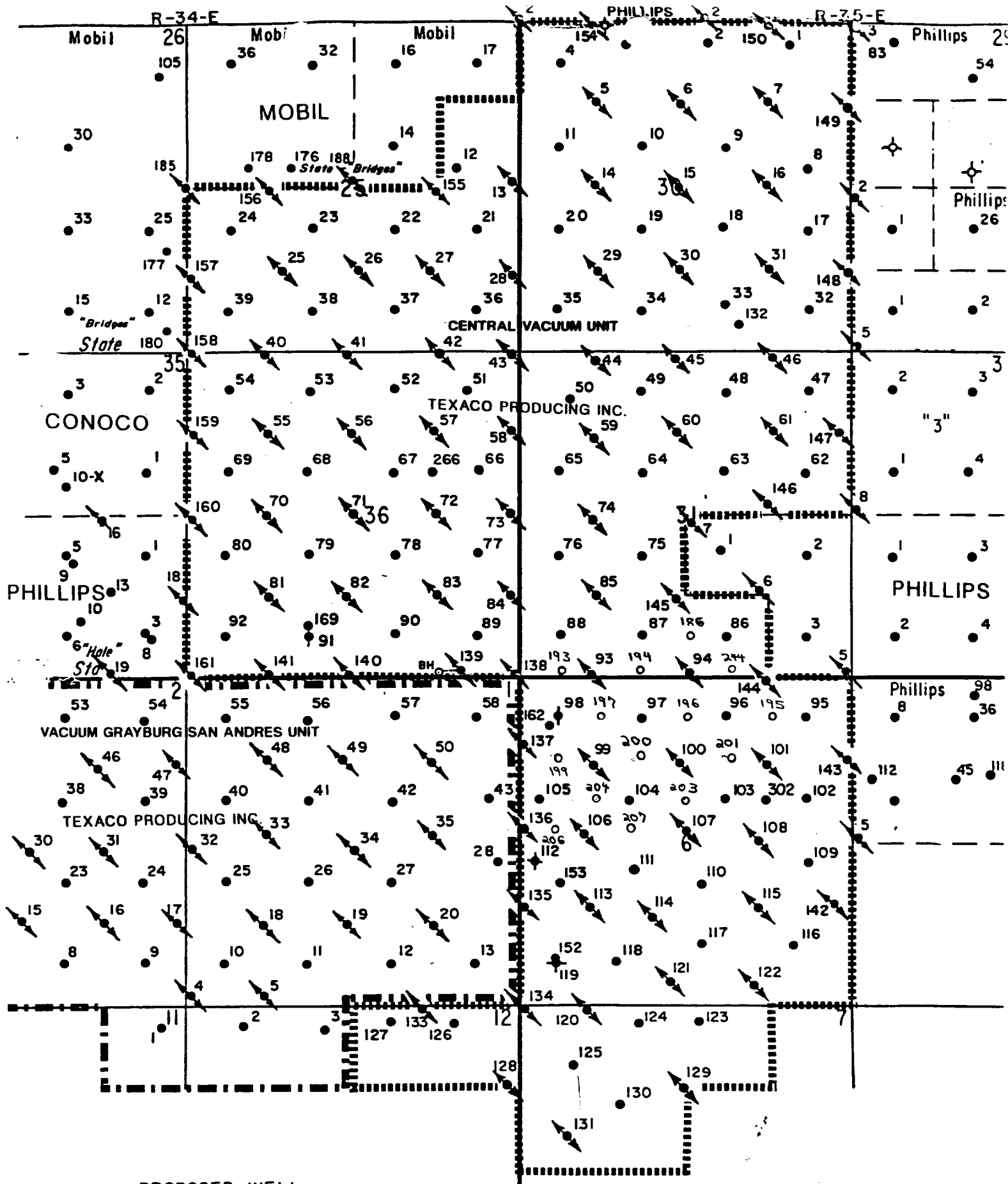
RECEIVED

DEC 19 1994
O C HOBBS
OFFICE

CENTRAL VACUUM UNIT

WELL LOCATIONS

| | | | | | | |
|---------------|-------|-------|-------|----------------|---------|--------|
| WELL NO. 193: | 101' | FNL & | 534' | FWL OF SEC. 6, | T-18-S, | R-35-E |
| WELL NO. 194: | 14' | FNL & | 1917' | FWL OF SEC. 6, | T-18-S, | R-35-E |
| WELL NO. 196: | 649' | FNL & | 2535' | FWL OF SEC. 6, | T-18-S, | R-35-E |
| WELL NO. 197: | 717' | FNL & | 1093' | FWL OF SEC. 6, | T-18-S, | R-35-E |
| WELL NO. 199: | 1372' | FNL & | 584' | FWL OF SEC. 6, | T-18-S, | R-35-E |
| WELL NO. 200: | 1301' | FNL & | 1875' | FWL OF SEC. 6, | T-18-S, | R-35-E |
| WELL NO. 201: | 1360' | FNL & | 1973' | FEL OF SEC. 6, | T-18-S, | R-35-E |
| WELL NO. 203: | 1913' | FNL & | 2476' | FWL OF SEC. 6, | T-18-S, | R-35-E |
| WELL NO. 204: | 1994' | FNL & | 1073' | FWL OF SEC. 6, | T-18-S, | R-35-E |
| WELL NO. 206: | 2509' | FNL & | 536' | FWL OF SEC. 6, | T-18-S, | R-34-E |
| WELL NO. 207: | 2500' | FNL & | 1825' | FWL OF SEC. 6, | T-18-S, | R-35-E |



TEXACO
CENTRAL VACUUM UNIT
VACUUM G-SA FIELD
LEA COUNTY, NEW MEXICO

DEC 19 1994
173

RECEIVED
DEC 19 1994
OCD HOBBS
OFFICE