

DISTRICT I

P.O. Box 1980, Hobbs, NM 88241-1980

DISTRICT II

P.O. Box Drawer DD, Artesia, NM 88211-0719

DISTRICT III

1000 Rio Brazos Rd., Aztec, NM 87410

DISTRICT IV

P.O. Box 2088, Santa Fe, NM 87504-2088

State of New Mexico

Energy, Minerals and Natural Resources Department

Form C-101

Revised February 10, 1994

Instructions on back

Submit to Appropriate District Office

State Lease - 6 Copies

Fee Lease - 5 Copies

☐ AMENDED REPORT**OIL CONSERVATION DIVISION**

P.O. Box 2088

Santa Fe, New Mexico 87504-2088

APPLICATION FOR PERMIT TO DRILL, RE-ENTER, DEEPEN, PLUGBACK, OR ADD A ZONE

¹ Operator Name and Address TEXACO EXPLORATION & PRODUCTION INC. P.O. Box 3109, Midland Texas 79702		² OGRID Number 022351
⁴ Property Code 11122	⁵ Property Name CENTRAL VACUUM UNIT	³ API Number 30-0225-32808 ⁶ Well No. 206

7 Surface Location

UI or lot no.	Section	Township	Range	Lot.Idn	Feet From The	North/South Line	Feet From The	East/West Line	County
E	6	18-S	35-E		2509	NORTH	536	WEST	LEA

8 Proposed Bottom Hole Location If Different From Surface

UI or lot no.	Section	Township	Range	Lot.Idn	Feet From The	North/South Line	Feet From The	East/West Line	County

9 Proposed Pool 1

VACUUM GRAYBURG-SAN ANDRES

10 Proposed Pool 2

¹¹ Work Type Code N	¹² WellType Code I	¹³ Rotary or C.T. ROTARY	¹⁴ Lease Type Code S	¹⁵ Ground Level Elevation 3974'
¹⁶ Multiple No	¹⁷ Proposed Depth 4850'	¹⁸ Formation GRAYBURG-SAN ANDRES	¹⁹ Contractor	²⁰ Spud Date 1/10/95

21 Proposed Casing and Cement Program

SIZE OF HOLE	SIZE OF CASING	WEIGHT PER FOOT	SETTING DEPTH	SACKS OF CEMENT	EST. TOP
11	8 5/8	24#	1535'	585 SACKS	SURFACE
7 7/8	5 1/2	15.5#	4850'	1200 SACKS	SURFACE

22 Describe the proposed program. If this application is to DEEPEN or PLUG BACK give the data on the present productive zone and proposed new productive zone. Describe the blowout prevention program, if any. Use additional sheets if necessary.

CEMENTING PROGRAM:

SURFACE CASING - 435 SACKS CLASS C w/4% GEL, 2% CACL2 (13.5 PPG, 1.74 CF/S, 9.1 GW/S). F/B 150 SACKS CLASS C w/ 2% CACL2 (14.8, 1.34 CF/S, 6.3 GW/S).

PRODUCTION CASING - 1000 SACKS 35/65 POZ CLASS H w/ 6% GEL, 5% SALT, 1/4# FLOCELE (12.8 PPG, 1.94 CF/S, 10.4 GW/S). F/B 200 SACKS CLASS H (15.6 PPG, 1.18 CF/S, 5.2 GW/S).

UNORTHODOX LOCATION: EXCEPTION HAS BEEN APPLIED FOR. (COPY ATTACHED)

THERE ARE NO OTHER OPERATORS IN THIS QUARTER QUARTER SECTION.

Permit Expires 6 Months From Approval Date Unless Drilling Underway.

23 I hereby certify that the rules and regulations of the Oil Conservation Division have been complied with and that the information given above is true and complete to the best of my knowledge and belief.

Signature

C. Wade Howard

Printed Name

C. Wade Howard

Title

Eng. Assistant

Date

12/15/94

Telephone

688-4606

OIL CONSERVATION DIVISION

Approved By: ORIGINAL SIGNED BY JERRY SEXTON
DISTRICT I SUPERVISOR

Title:

Approval Date: JAN 10 1995

Expiration Date:

Conditions of Approval:

Attached ☐

RECEIVED

DEC 15 1994
OCD HOBBS
OFFICE

DISTRICT I
P. O. Box 1980, Hobbs, NM 88240

DISTRICT II
P. O. Drawer DD, Artesia, NM 88210

DISTRICT III
1000 Rio Brazos Rd., Aztec, NM 87410

DISTRICT IV
P. O. Box 2088, Santa Fe, NM 87504-2088

State of New Mexico
Energy, Minerals and Natural Resources Department

OIL CONSERVATION DIVISION

PO Box 2088
Santa Fe, NM 87504-2088

Form C-102
Revised February 10, 1994

Instructions on back

Submit to Appropriate District Office

State Lease-4 copies

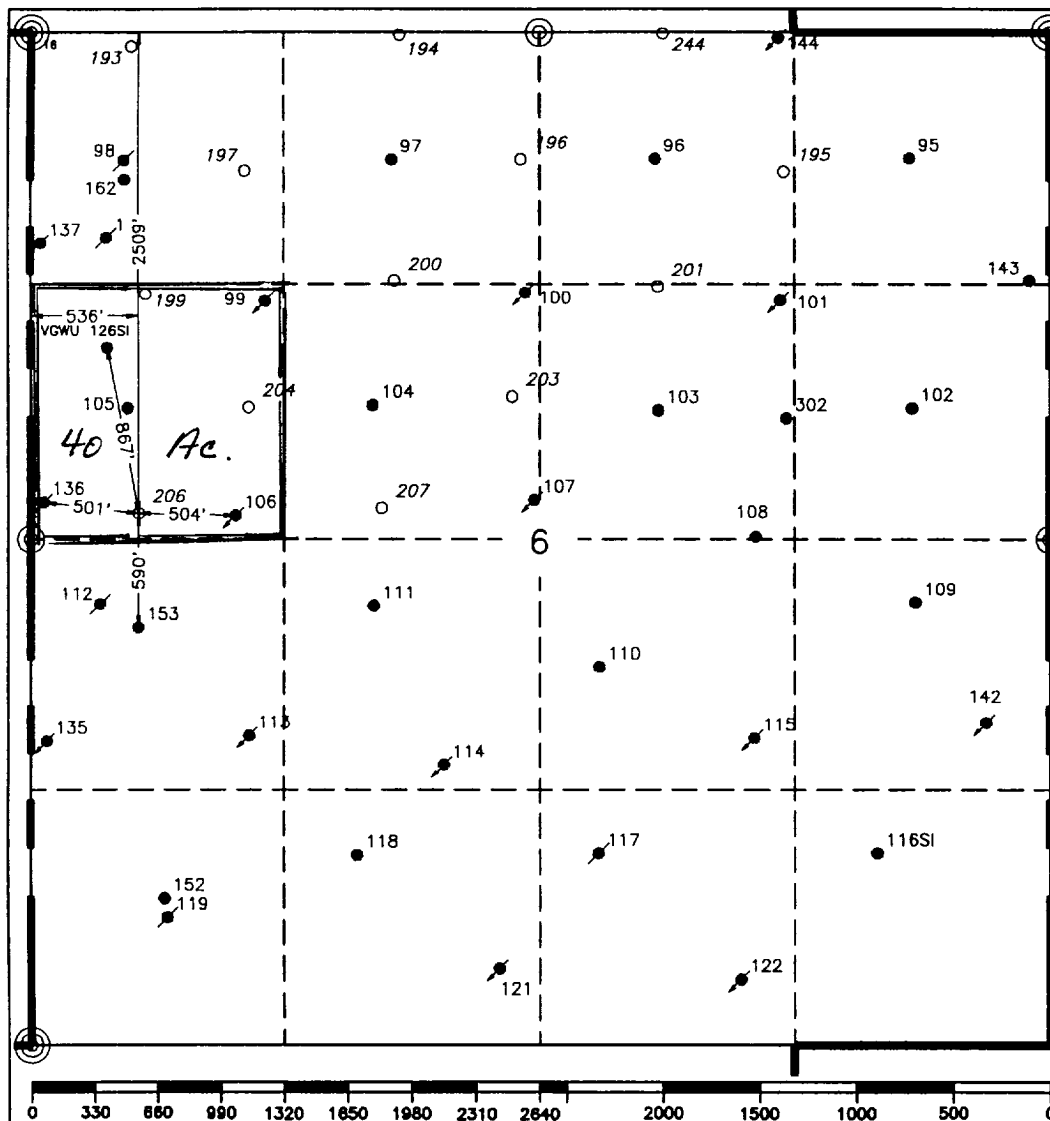
Fee Lease-3 copies

☐ AMENDED REPORT

WELL LOCATION AND ACREAGE DEDICATION PLAT

¹ API Number 38025-32808		² Pool Code 6-2180		³ Pool Name Vacuum Grayburg-San Andres					
⁴ Property Code 11122		⁵ Property Name Central Vacuum Unit				⁶ Well Number 206			
⁷ OGRID No. 22351		⁸ Operator Name TEXACO EXPLORATION & PRODUCTION, INC.				⁹ Elevation 3974'			
¹⁰ Surface Location									
UL or lot no. E	Section 6	Township 18-S	Range 35-E	Lot Idn	Feet from the 2509'	North/South line North	Feet from the 536'	East/West line West	⁷ County Lea
¹¹ Bottom Hole Location If Different From Surface									
UL or lot no.	Section	Township	Range	Lot Idn	Feet from the	North/South line	Feet from the	East/West line	⁷ County
¹² Dedicated Acres 40		¹³ Joint or Infill		¹⁴ Consolidation Code		¹⁵ Order No.			

NO ALLOWABLE WILL BE ASSIGNED TO THIS COMPLETION UNTIL ALL INTERESTS HAVE BEEN CONSOLIDATED
OR A NON-STANDARD UNIT HAS BEEN APPROVED BY THE DIVISION.



¹⁷ OPERATOR CERTIFICATION

I hereby certify that the information contained herein is true and complete to the best of my knowledge and belief.

Signature

C. Wade Howard

Printed Name

C. Wade Howard

Position

Asst. Technician

Company

Texaco Expl. & Prod. Inc.

Date

December 5, 1994

¹⁸ SURVEYOR CERTIFICATION

I hereby certify that the well location shown on this plat was plotted from field notes of actual surveys made by me or under my supervision, and that the same is true and correct to the best of my knowledge and belief.

Date Surveyed

November 21, 1994

Signature & Seal of Professional Surveyor

John S. Piper

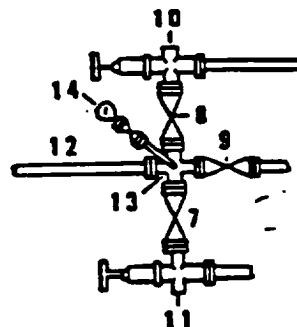
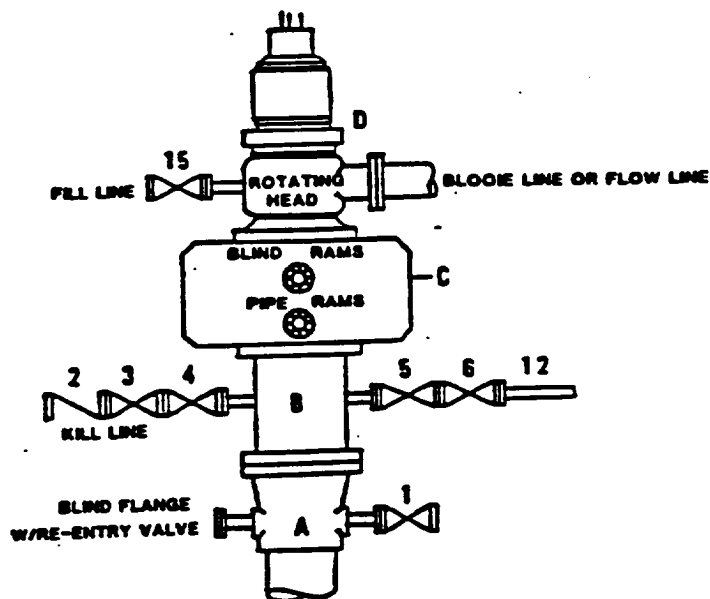
Certificate No.

7254 John S. Piper

Sheet

**DRILLING CONTROL
CONDITION II-B 3000 WP
FOR AIR DRILLING OR
WHERE NITROGEN OR AIR BLOWS ARE EXPECTED**

H₂S TRIM REQUIRED
YES X NO



**DRILLING CONTROL
MATERIAL LIST - CONDITION II - B**

- | | |
|------------|---|
| A | Texaco Wellhead |
| B | 3000# W.P. drilling spool with a 2" minimum flanged outlet for kill line and 3" minimum flanged outlet for choke line. |
| C | 3000# W.P. Dual ram type preventer, hydraulic operated with 1" steel, 3000# W.P. control lines (where sub-structure height is adequate, 2 - 3000# W.P. single ram type preventers may be utilized). |
| D | Rotating Head with fill up outlet and extended Bloose Line. |
| 1,3,4,7,8, | 2" minimum 3000# W.P. flanged full opening steel gate valve, or Halliburton Lo Torc Plug valve. |
| 2 | 2" minimum 3000# W.P. back pressure valve. |
| 5,6,9 | 3" minimum 3000# W.P. flanged full opening steel gate valve, or Halliburton Lo Torc Plug valve. |
| 12 | 3" minimum schedule 80, Grade "B", seamless line pipe. |
| 13 | 2" minimum x 3" minimum 3000# W.P. flanged cross. |
| 10,11 | 2" minimum 3000# W.P. adjustable choke bodies. |
| 14 | Cameron Mud Gauge or equivalent (location optional in choke line). |
| 15 | 2" minimum 3000# W.P. flanged or threaded full opening steel gate valve, or Halliburton Lo Torc Plug valve. |



TEXACO, INC.
MIDLAND DIVISION
MIDLAND, TEXAS



SCALE	DATE	EST NO	DWG. NO.
DRAWN BY			
CHECKED BY			
APPROVED BY			

EXHIBIT C

RECEIVED

DEC 19 1994

OCD HOBBS
OFFICE



December 8, 1994

GOV - STATE AND LOCAL GOVERNMENTS

Unorthodox Locations

Central Vacuum Unit

Well Nos. 193, 194, 196, 197, 199,
200, 201, 203, 204, 206, and 207

Lea County, New Mexico

State of New Mexico

Energy and Minerals Department

Oil Conservation Division

P. O. Box 2088

Santa Fe, New Mexico 87501-2088

Attention: Mr. Michael E. Stogner

Gentlemen:

An Exception to Rule 104 F.I. by administrative approval is requested for Texaco Exploration and Production Inc.'s Central Vacuum Unit Well Nos. 193, 194, 196, 197, 199, 200, 201, 203, 204, 206, and 207. See attached list for well locations.

These wells must be drilled at these locations to ensure proper development of 10-acre spacing. Wells drilled previously on 10-acre spacing have proven to be viable wells. They will be completed in the Grayburg San Andres formation. Well Nos. 196, 197, 203, and 204 will be producing wells and Well Nos. 193, 194, 199, 200, 201, 206, and 207 will be water injection wells.

Texaco Exploration and Production Inc. is the only "affected offset operator" to Well Nos. 193, 197, 199, 204 and 206. We grant ourselves a waiver to the unorthodox locations. There are no "affected offset operators" to Well Nos. 194, 196, 200, 201, 203, and 207. Attached is Form C-102 for each well and a lease plat showing the location of the subject wells.

Any questions concerning this request should be directed to Mr. C. W. Howard at (915) 688-4606.

Yours very truly,

J. A. Head

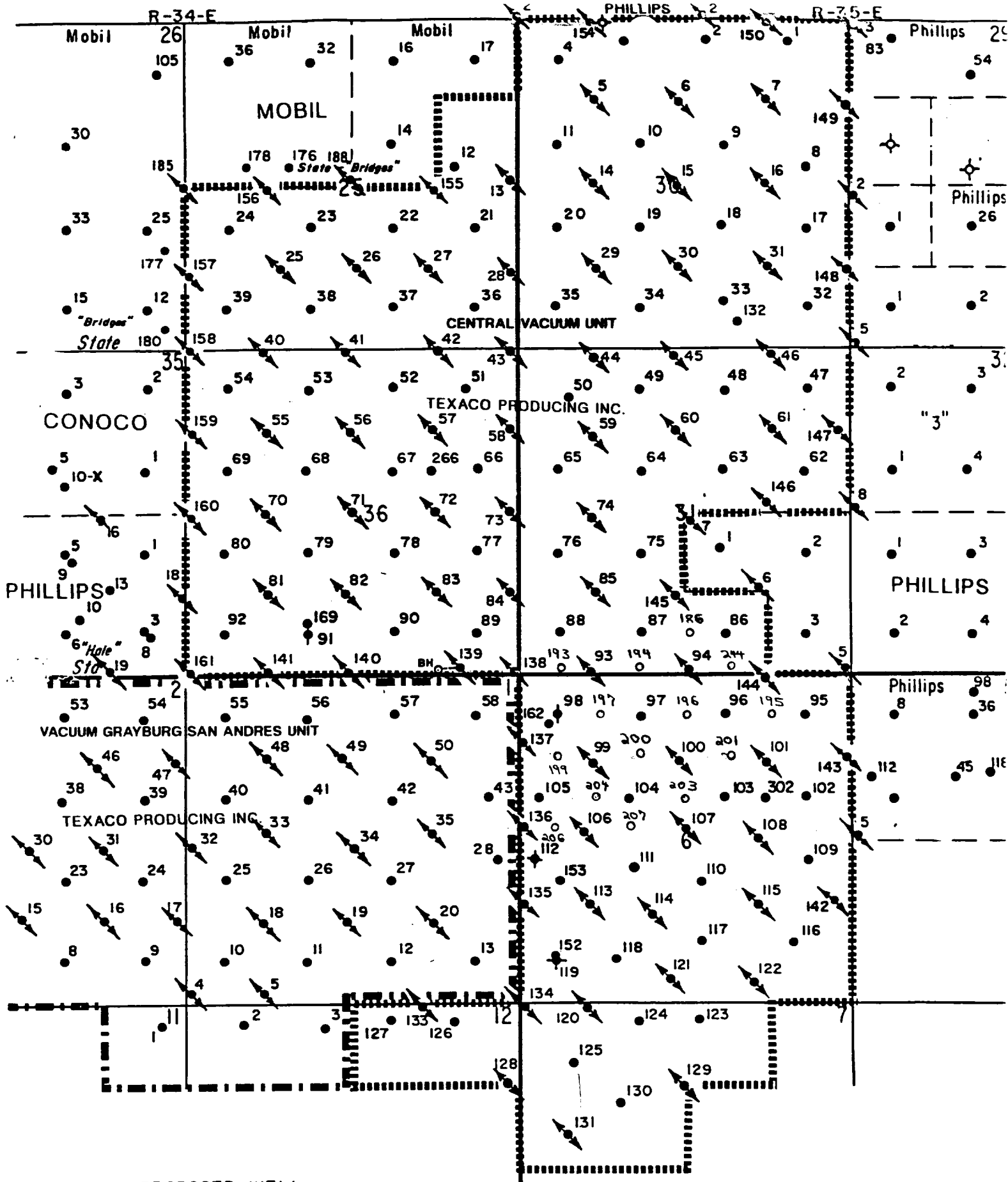
Asset Team Manager

CWH:cwh cc: NMOCD, Hobbs, NM

CENTRAL VACUUM UNIT

WELL LOCATIONS

WELL NO. 193:	101'	FNL &	534'	FWL OF SEC. 6,	T-18-S,	R-35-E
WELL NO. 194:	14'	FNL &	1917'	FWL OF SEC. 6,	T-18-S,	R-35-E
WELL NO. 196:	649'	FNL &	2535'	FWL OF SEC. 6,	T-18-S,	R-35-E
WELL NO. 197:	717'	FNL &	1093'	FWL OF SEC. 6,	T-18-S,	R-35-E
WELL NO. 199:	1372'	FNL &	584'	FWL OF SEC. 6,	T-18-S,	R-35-E
WELL NO. 200:	1301'	FNL &	1875'	FWL OF SEC. 6,	T-18-S,	R-35-E
WELL NO. 201:	1360'	FNL &	1973'	FEL OF SEC. 6,	T-18-S,	R-35-E
WELL NO. 203:	1913'	FNL &	2476'	FWL OF SEC. 6,	T-18-S,	R-35-E
WELL NO. 204:	1994'	FNL &	1073'	FWL OF SEC. 6,	T-18-S,	R-35-E
WELL NO. 206:	2509'	FNL &	536'	FWL OF SEC. 6,	T-18-S,	R-34-E
WELL NO. 207:	2500'	FNL &	1825'	FWL OF SEC. 6,	T-18-S,	R-35-E



- PROPOSED WELL
- PRODUCING WELL
- ↗ INJECTION WELL
- ⊥ SHUT-IN WELL

TEXACO
CENTRAL VACUUM UNIT
VACUUM G-SA FIELD
LEA COUNTY, NEW MEXICO

1/17/70

RECEIVED

DEC 1 8 1964

U C D PUBLIC
OFFICE