

DISTRICT I
P.O. Box 1980, Hobbs, NM 88241-1980

DISTRICT II
P.O. Box Drawer DD, Artesia, NM 88211-0719

DISTRICT III
1000 Rio Brazos Rd., Aztec, NM 87410

DISTRICT IV
P.O. Box 2088, Santa Fe, NM 87504-2088

State of New Mexico
Energy, Minerals and Natural Resources Department

OIL CONSERVATION DIVISION

P.O. Box 2088
Santa Fe, New Mexico 87504-2088

Form C-101
Revised February 10, 1994
Instructions on back
Submit to Appropriate District Office
State Lease - 6 Copies
Fee Lease - 5 Copies

☐ AMENDED REPORT

APPLICATION FOR PERMIT TO DRILL, RE-ENTER, DEEPEN, PLUGBACK, OR ADD A ZONE

¹ Operator Name and Address TEXACO EXPLORATION & PRODUCTION INC. P.O. Box 3109, Midland Texas 79702		² OGRID Number 022351
		³ API Number 32-025-32874
⁴ Property Code 11051	⁵ Property Name NEW MEXICO 'R' STATE NCT-1	⁶ Well No. 17

⁷ Surface Location

UI or lot no.	Section	Township	Range	Lot.Idn	Feet From The	North/South Line	Feet From The	East/West Line	County
G	6	18-S	35-E		2530	NORTH	2530	EAST	LEA

⁸ Proposed Bottom Hole Location If Different From Surface

UI or lot no.	Section	Township	Range	Lot.Idn	Feet From The	North/South Line	Feet From The	East/West Line	County
⁹ Proposed Pool 1 VACUUM DRINKARD					¹⁰ Proposed Pool 2				

¹¹ Work Type Code N	¹² WellType Code I	¹³ Rotary or C.T. ROTARY	¹⁴ Lease Type Code S	¹⁵ Ground Level Elevation 3978'
¹⁶ Multiple No	¹⁷ Proposed Depth 8150'	¹⁸ Formation DRINKARD	¹⁹ Contractor	²⁰ Spud Date 4/15/95

²¹ Proposed Casing and Cement Program

SIZE OF HOLE	SIZE OF CASING	WEIGHT PER FOOT	SETTING DEPTH	SACKS OF CEMENT	EST. TOP
11	8 5/8	24#	1550'	650 SACKS	SURFACE
7 7/8	5 1/2	15.5 & 17#	8150'	2000 SACKS	SURFACE

²² Describe the proposed program. If this application is to DEEPEN or PLUG BACK give the data on the present productive zone and proposed new productive zone.
Describe the blowout prevention program, if any. Use additional sheets if necessary.

CEMENTING PROGRAM:

SURFACE - 500 SACKS CLASS C w/ 4% GEL (13.5 PPG, 1.74 CF/S, 9.1 GW/S). F/B 150 SACKS CLASS C (14.8 PPG, 1.32 CF/S, 6.3 GW/S).
PRODUCTION - 1800 SACKS 35/65 POZ H w/ 6% GEL, 5% SALT, 1/4# FC (12.4 PPG, 2.14 CF/S, 11.9 GW/S). F/B 200 SACKS CLASS H (15.6 PPG, 1.18 CF/S, 5.2 GW/S).

THERE ARE NO OTHER OPERATORS IN THIS QUARTER SECTION.

UNORTHODOX LOCATION GRANTED FEBRUARY 3, 1995. ORDER No. R-10307.

Permit Expires 6 Months From Approval
Date Unless Drilling Underway.

²³ I hereby certify that the rules and regulations of the Oil Conservation Division have been complied with and that the information given above is true and complete to the best of my knowledge and belief.		OIL CONSERVATION DIVISION	
Signature <i>C. Wade Howard</i>		Approved By: <i>Orig. Signed by Paul Kautz Geologist</i>	
Printed Name C. Wade Howard		Title:	
Title Eng. Assistant		Approval Date: MAR 07 1995	Expiration Date:
Date 2/28/95	Telephone 688-4606	Conditions of Approval: Attached <input type="checkbox"/>	

DISTRICT I -
P. O. Box 1980, Hobbs, NM 88240

DISTRICT II
P. O. Drawer DD, Artesia, NM 88210

DISTRICT III
1000 Rio Brazos Rd., Aztec, NM 87410

DISTRICT IV
P. O. Box 2088, Santa Fe, NM 87504-2088

State of New Mexico
Minerals and Natural Resources Department

Form C-102
Revised February 10, 1994

Instructions on back

Submit to Appropriate District Office

State Lease-4 copies
Fee Lease-3 copies

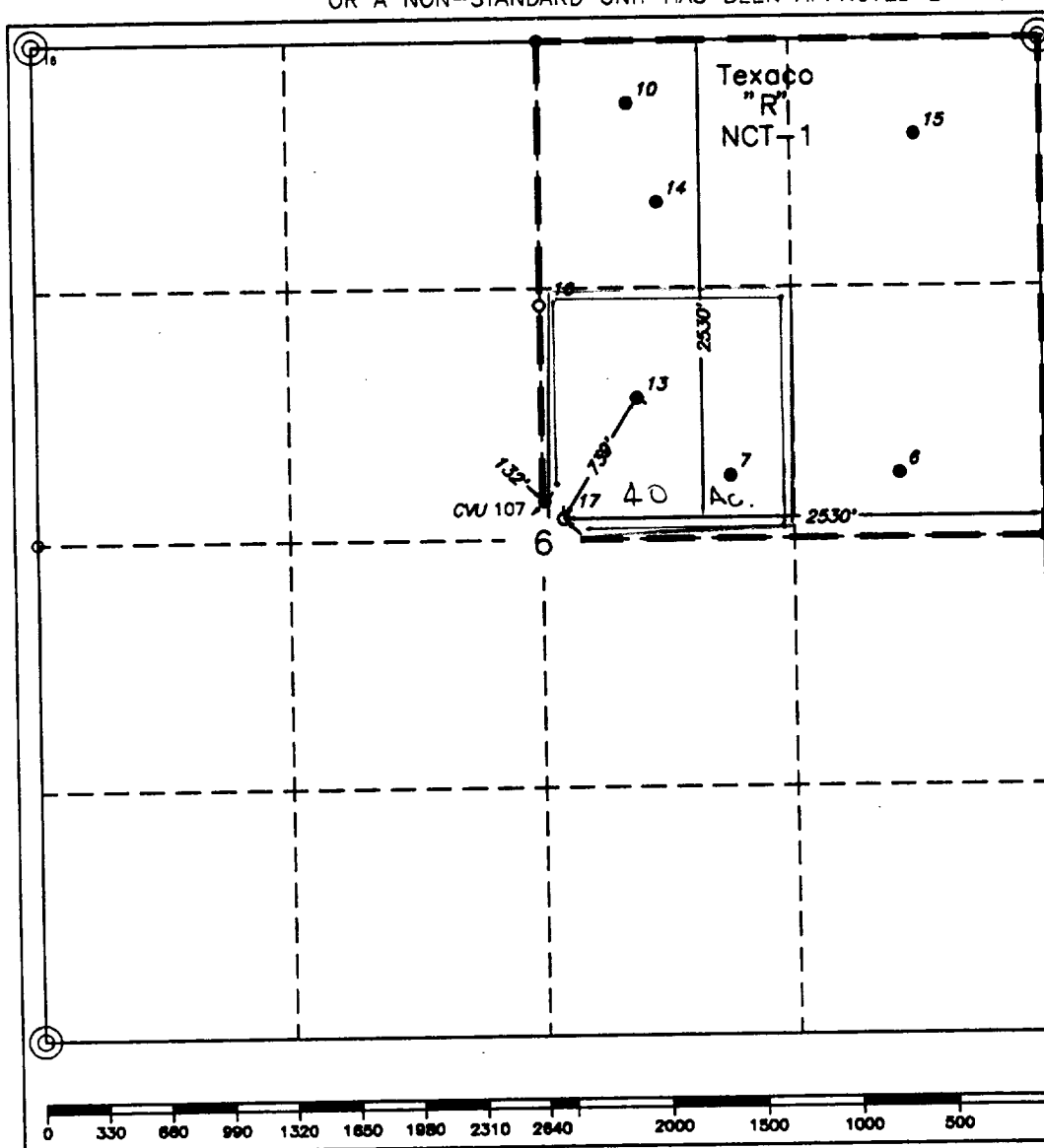
MINERAL CONSERVATION DIVISION
PO Box 2088
Santa Fe, NM 87504-2088

☐ AMENDED REPORT

WELL LOCATION AND ACREAGE DEDICATION PLAT

¹ API Number 30-025-32874		² Pool Code 62110		³ Pool Name VACUUM DRINKARD					
⁴ Property Code 11051		⁵ Property Name NEW MEXICO "R" STATE NCT-1						⁸ Well Number 17	
⁷ GRID No. 22351		⁶ Operator Name TEXACO EXPLORATION & PRODUCTION, INC.						⁹ Elevation 3978'	
¹⁰ Surface Location									
UL or lot no. G	Section 6	Township 18-S	Range 35-E	Lot Idn	Feet from the 2530'	North/South line North	Feet from the 2530'	East/West line East	⁷ County Lea
¹¹ Bottom Hole Location If Different From Surface									
UL or lot no.	Section	Township	Range	Lot Idn	Feet from the	North/South line	Feet from the	East/West line	⁷ County
¹² Dedicated Acres 40		¹³ Joint or Infill		¹⁴ Consolidation Code		¹⁵ Order No.			

NO ALLOWABLE WILL BE ASSIGNED TO THIS COMPLETION UNTIL ALL INTERESTS HAVE BEEN CONSOLIDATED
OR A NON-STANDARD UNIT HAS BEEN APPROVED BY THE DIVISION.



¹⁶OPERATOR CERTIFICATION

I hereby certify that the information contained herein is true and complete to the best of my knowledge and belief.

Signature

C. Wade Howard

Printed Name

C. Wade Howard

Position

Eng. Asst.

Company

Texaco Expl. & Prod. Inc.

Date

October 19, 1994

¹⁸SURVEYOR CERTIFICATION

I hereby certify that the well location shown on this plat was plotted from field notes of actual surveys made by me or under my supervision, and that the same is true and correct to the best of my knowledge and belief.

Date Surveyed

October 13, 1994

Signature & Seal of
Professional Surveyor

John S. Piper

Certificate No.

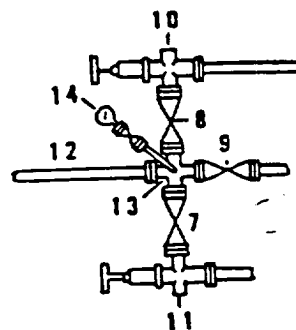
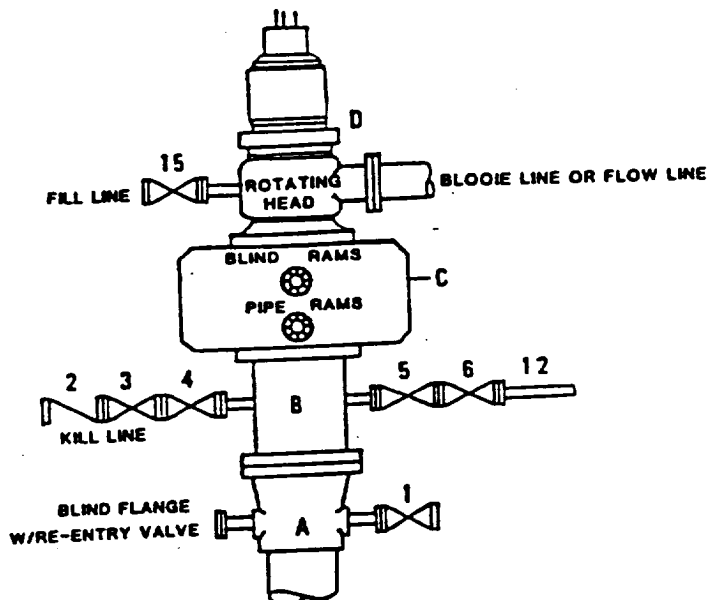
7254 John S. Piper

Sheet

○ = Staked Location ● = Producing Well ◆ = Injection Well ◇ = Water Supply Well ◆ = Plugged & Abandon Well
⊙ = Found Section Corner, 2 or 3" Iron Pipe & GLO B.C. ○ = Found 1/4 Section Corner, 1" Iron Pipe & GLO B.C.

**DRILLING CONTROL
CONDITION II-B 3000 WP
FOR AIR DRILLING OR
WHERE NITROGEN OR AIR BLOWS ARE EXPECTED**

H₂S TRIM REQUIRED
YES X NO



**DRILLING CONTROL
MATERIAL LIST - CONDITION II - B**

- A Texaco Wellhead
- B 3000# W.P. drilling spool with a 2" minimum flanged outlet for kill line and 3" minimum flanged outlet for choke line.
- C 3000# W.P. Dual ram type preventer, hydraulic operated with 1" steel, 3000# W.P. control lines (where sub-structure height is adequate, 2 - 3000# W.P. single ram type preventers may be utilized).
- D Rotating Head with fill up outlet and extended Blooe Line.
- 1,3,4, 2" minimum 3000# W.P. flanged full opening steel gate valve, or Halliburton Lo Torc Plug valve.
- 7,8, 2" minimum 3000# W.P. back pressure valve.
- 2 2" minimum 3000# W.P. flanged full opening steel gate valve, or Halliburton Lo Torc Plug valve.
- 5,6,9 3" minimum 3000# W.P. flanged full opening steel gate valve, or Halliburton Lo Torc Plug valve.
- 12 1" minimum schedule 80, Grade "B", seamless line pipe.
- 13 2" minimum x 3" minimum 3000# W.P. flanged cross.
- 10,11 2" minimum 3000# W.P. adjustable choke bodies.
- 14 Cameron Mud Gauge or equivalent (location optional in choke line).
- 15 2" minimum 3000# W.P. flanged or threaded full opening steel gate valve, or Halliburton Lo Torc Plug valve.



TEXACO, INC.
MIDLAND DIVISION
MIDLAND, TEXAS



SCALE	DATE	EST NO	DWG NO
DRAWN BY			
CHECKED BY			
APPROVED BY			

EXHIBIT C

VACUUM DRINKARD COOPERATIVE PM PROJECT
APPROVED INJECTION WELLS

[illegible]