

DISTRICT I
P.O. Box 1980, Hobbs, NM 88241-1980

DISTRICT II
P.O. Box Drawer DD, Artesia, NM 88211-0719

DISTRICT III
1000 Rio Brazos Rd., Aztec, NM 87410

DISTRICT IV
P.O. Box 2088, Santa Fe, NM 87504-2088

State of New Mexico
Energy, Minerals and Natural Resources Department

OIL CONSERVATION DIVISION

P.O. Box 2088
Santa Fe, New Mexico 87504-2088

Form C-10
Revised February 10, 1999
Instructions on back
Submit to Appropriate District Office
State Lease - 6 Copies
Fee Lease - 5 Copies
AMENDED REPORT

APPLICATION FOR PERMIT TO DRILL, RE-ENTER, DEEPEN, PLUGBACK, OR ADD A ZONE

¹ Operator Name and Address TEXACO EXPLORATION & PRODUCTION INC. 205 E. Bender, HOBBS, NM 88240		² OGRID Number 022351
⁴ Property Code 011045	⁵ Property Name NEW MEXICO L STATE	³ API Number 30-025-33301
		⁶ Well No. 18

⁷ Surface Location									
UI or lot no	Section	Township	Range	Lot.Idn	Feet From The	North/South Line	Feet From The	East/West Line	County
A	1	18S	34E		810	NORTH	650	EAST	LEA

⁸ Proposed Bottom Hole Location If Different From Surface									
UI or lot no	Section	Township	Range	Lot.Idn	Feet From The	North/South Line	Feet From The	East/West Line	County
⁹ Proposed Pool 1 VACUUM WOLF CAMP/VACUUM DRINKARD					¹⁰ Proposed Pool 2				

¹¹ Work Type Code P	¹² Well Type Code O	¹³ Rotary or C.T.	¹⁴ Lease Type Code S	¹⁵ Ground Level Elevation 3982' GR
¹⁶ Multiple No	¹⁷ Proposed Depth 11,500'	¹⁸ Formation WOLFCAMP/DRNKRD	¹⁹ Contractor	²⁰ Spud Date 8/15/00

²¹ Proposed Casing and Cement Program

SIZE OF HOLE	SIZE OF CASING	WEIGHT PER FOOT	SETTING DEPTH	SACKS OF CEMENT	EST. TOP
NO CHANGE	NO CHANGE				

²² Describe the proposed program. If this application is to DEEPEN or PLUG BACK give the data on the present productive zone and proposed new productive zone. Describe the blowout prevention program, if any. Use additional sheets if necessary.

TEXACO INTENDS TO RECOMPLETE THE SUBJECT WELL IN THE DRINKARD & WOLFCAMP & COMMINGLE. THE INTENDED PROCEDURE IS AS FOLLOWS:

- 1) MIRU SU. PULL TBG. RUN BIT & SCRAPER & DRILL OUT CIBP @ 9254'. SET CMT RET @ 9250 & SQZ PERFS 9304-9350 W/100 SX CL H CMT.
- 2) DRILL OUT CMT RET & CIBP @ 9440'. C/O UNTIL 10,350'. RUN CBL/GR FR 10300-5300'.
- 3) PERF WOLFCAMP 10260-68, 10272076, 10130-56, 10096-106, 10070-74, 10026-36, 10008-14, 9868-76, 9830-50
- 4) TIH W/PKR & WS TO 10270'. SPOT ACID FR 10270-9550. ACIDIZE PERFS W/20000 GALS 15% HCL NEFE. DISPL W/2% KCL WTR.
- 5) SWAB TEST PERFS. PULL TBG & PKR. SET RBP @ 9420. PERF WOLFCAMP 9374-96, 9336-50, 9318-28, 9304-14, 9258-90. SET PKR @ 9160. ACIDIZE PERFS 9258-9396 W/10000 GALS 15% HCL NEFE.
- 6) PERF DRINKARD 7860-62, 7826-30, 7800-10, 7776-78, 7758-64, 7728-32, 7708-20, 7698-7702, 7622-80, 7614-18. TIH W/PKR & WS TO 7870. ACIDIZE W/20000 GALS 20% HCL NEFE. TIH W/TBG STRING, PUMP & RDS. PULL RBP @ 9100'. COMMINGLE PRODUCTION.

²³ I hereby certify that the rules and regulations of the Oil Conservation Division have been complied with and that the information given above is true and complete to the best of my knowledge and belief.

Signature

J. Denise Leake

Printed Name

J. Denise Leake

Title Engineering Assistant

Date 8/1/00

Telephone 397-0405

OIL CONSERVATION DIVISION

Approved By:

Title:

Approval Date:

Expiration Date:

Conditions of Approval:

Attached

Permit Expires 1 Year From Approval Date Unless Drilling Underway

Plug Back

Drilling Nichols 3-94 ver 1.10

DISTRICT I

P.O. Box 1980, Hobbs, NM 88241-1980

DISTRICT II

P.O. Box Drawer DD, Artesia, NM 88211-0719

DISTRICT III

1000 Rio Brazos Rd., Aztec, NM 87410

DISTRICT IV

P.O. Box 2088, Santa Fe, NM 87504-2088

State of New Mexico

Energy, Minerals and Natural Resources Department

Form C-10 2

Revised February 10, 1999

Instructions on back

Submit to Appropriate District Office

State Lease - 4 Copies

Fee Lease - 3 Copies

AMENDED REPORT

OIL CONSERVATION DIVISION

P.O. Box 2088

Santa Fe, New Mexico 87504-2088

WELL LOCATION AND ACREAGE DEDICATION PLAT

1 API Number 30-025-33301	2 Pool Code 62110	3 Pool Name VACUUM DRINKARD
4 Property Code 011045	5 Property Name NEW MEXICO L STATE	6 Well No. 18
7 OGRID Number 022351	8 Operator Name TEXACO EXPLORATION & PRODUCTION INC.	9 Elevation 3982' GR

10 Surface Location

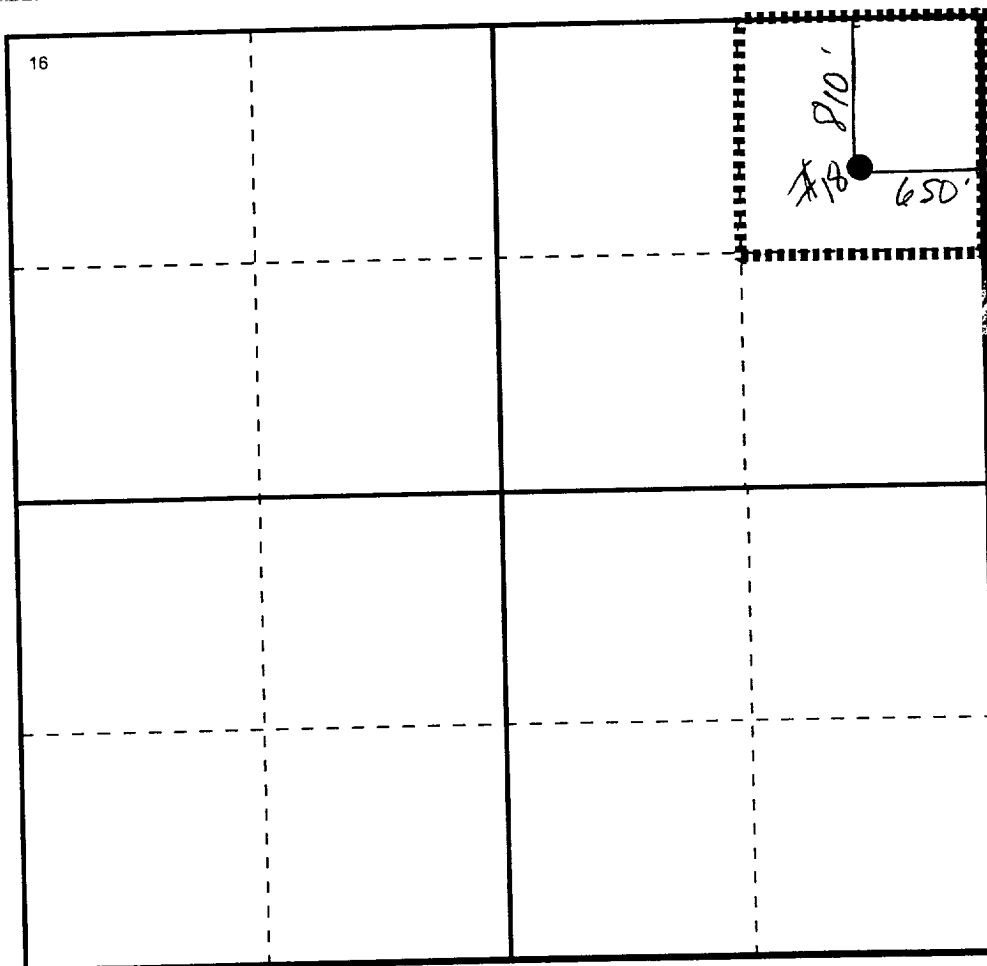
UI or lot no	Section	Township	Range	Lot.Idn	Feet From The	North/South Line	Feet From The	East/West Line	County
A	1	18S	34E		810	NORTH	650	EAST	LEA

11 Bottom Hole Location If Different From Surface

UI or lot no	Section	Township	Range	Lot.Idn	Feet From The	North/South Line	Feet From The	East/West Line	County

12 Dedicated Acre 40	13 Joint or Infill No	14 Consolidation Code	15 Order No.
-------------------------	--------------------------	-----------------------	--------------

NO ALLOWABLE WILL BE ASSIGNED TO THIS COMPLETION UNTIL ALL INTERESTS HAVE BEEN CONSOLIDATED
OR A NON-STANDARD UNIT HAS BEEN APPROVED BY THE DIVISION



17 OPERATOR CERTIFICATION

I hereby certify that the information contained herein is true and complete to the best of my knowledge and belief

Signature

Printed Name

J. Denise Leake

Position

Engineering Assistant

Date

8/1/00

18 SURVEYOR CERTIFICATION

I hereby certify that the well location shown on this plat was plotted from field notes of actual surveys made by me or under my supervision, and that the same is true and correct to the best of my knowledge and belief.

Date Surveyed

Signature & Seal of
Professional Surveyor

Certificate No.

DISTRICT I

P.O. Box 1980, Hobbs, NM 88241-1980

DISTRICT II

P.O. Box Drawer DD, Artesia, NM 88211-0719

DISTRICT III

1000 Rio Brazos Rd., Aztec, NM 87410

DISTRICT IV

P.O. Box 2088, Santa Fe, NM 87504-2088

State of New Mexico

Energy, Minerals and Natural Resources Department

Form C-10 2

Revised February 10, 1999

Instructions on back

Submit to Appropriate District Office

State Lease - 4 Copy

Fee Lease - 3 Copy

AMENDED REPORT

OIL CONSERVATION DIVISION

P.O. Box 2088

Santa Fe, New Mexico 87504-2088

WELL LOCATION AND ACREAGE DEDICATION PLAT

¹ API Number 30-025-33301	² Pool Code 62340	³ Pool Name VACUUM WOLFCAMP
⁴ Property Code 011045	⁵ Property Name NEW MEXICO L STATE	⁶ Well No. 18
⁷ OGRID Number 022351	⁸ Operator Name TEXACO EXPLORATION & PRODUCTION INC.	⁹ Elevation 3982' GR

¹⁰ Surface Location

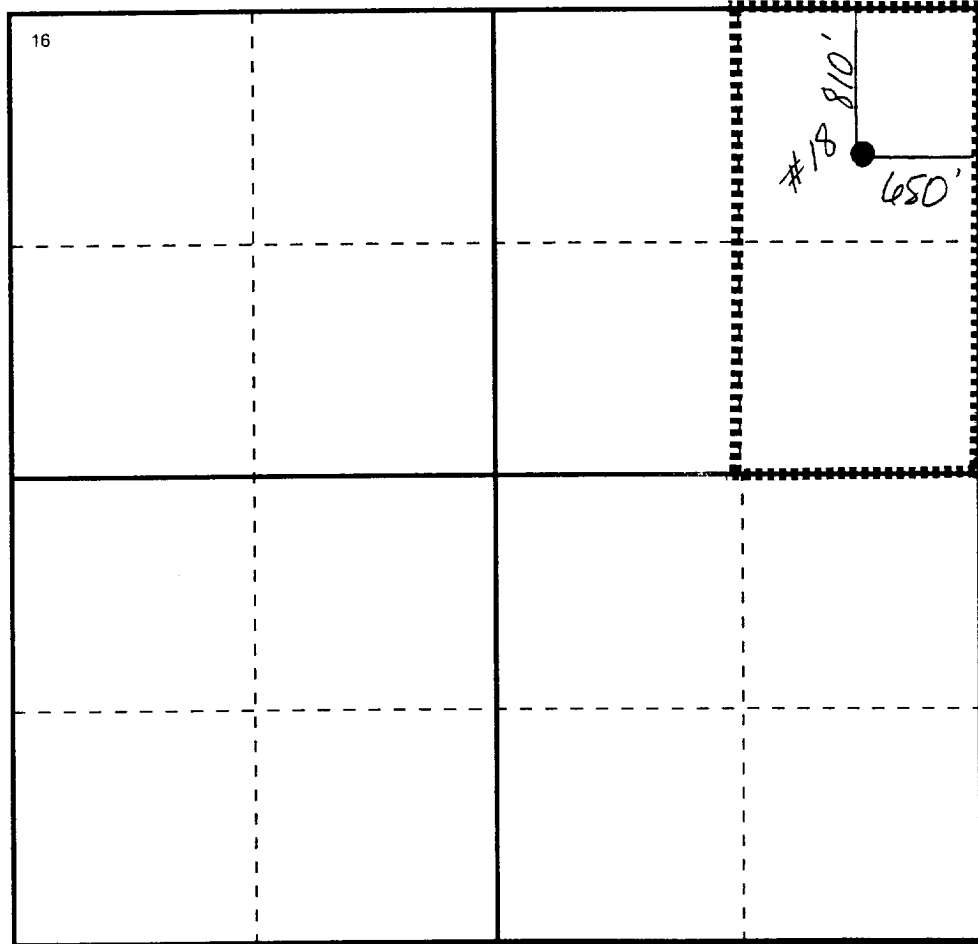
Ul or lot no	Section	Township	Range	Lot.Idn	Feet From The	North/South Line	Feet From The	East/West Line	County
A	1	18S	34E		810	NORTH	650	EAST	LEA

¹¹ Bottom Hole Location If Different From Surface

Ul or lot no	Section	Township	Range	Lot.Idn	Feet From The	North/South Line	Feet From The	East/West Line	County
--------------	---------	----------	-------	---------	---------------	------------------	---------------	----------------	--------

¹² Dedicated Acre 80	¹³ Joint or Infill No	¹⁴ Consolidation Code	¹⁵ Order No.
------------------------------------	-------------------------------------	----------------------------------	-------------------------

NO ALLOWABLE WILL BE ASSIGNED TO THIS COMPLETION UNTIL ALL INTERESTS HAVE BEEN CONSOLIDATED
OR A NON-STANDARD UNIT HAS BEEN APPROVED BY THE DIVISION



0 330 660 990 132 165 1980 2310 2640 2000 1500 1000 500 0

¹⁷ OPERATOR CERTIFICATION

I hereby certify that the information
contained herein is true and complete to the
best of my knowledge and belief

Signature

Printed Name

J. Denise Leake

Positio

Engineering Assistant

Date

8/1/00

¹⁸ SURVEYOR CERTIFICATION

I hereby certify that the well location shown
on this plat was plotted from field notes of
actual surveys made by me or under my
supervision, and that the same is true and
correct to the best of my knowledge and
belief.

Date Surveyed

Signature & Seal of

Professional Surveyor

Certificate No.