

DISTRICT I

P.O. Box 1980, Hobbs, NM 88241-1980

DISTRICT II

P.O. Box Drawer DD, Artesia, NM 88211-0719

DISTRICT III

1000 Rio Brazos Rd., Aztec, NM 87410

DISTRICT IV

P.O. Box 2088, Santa Fe, NM 87504-2088

State of New Mexico

Energy, Minerals and Natural Resources Department

OIL CONSERVATION DIVISION

P.O. Box 2088

Santa Fe, New Mexico 87504-2088

Form C-101

Revised February 10, 1994

Instructions on back

Submit to Appropriate District Office

State Lease - 6 Copies

Fee Lease - 5 Copies

☐ AMENDED REPORT

APPLICATION FOR PERMIT TO DRILL, RE-ENTER, DEEPEN, PLUGBACK, OR ADD A ZONE

¹ Operator Name and Address TEXACO EXPLORATION & PRODUCTION INC. P.O. Box 3109, Midland Texas 79702		² OGRID Number 022351
⁴ Property Code 11126	⁵ Property Name WEST VACUUM UNIT	³ API Number 30-025-33588 ⁶ Well No. 58

⁷ Surface Location

UI or lot no.	Section	Township	Range	Lot Idn	Feet From The	North/South Line	Feet From The	East/West Line	County
B	3	18-S	34-E	2	1330	NORTH	1330	EAST	LEA

⁸ Proposed Bottom Hole Location If Different From Surface

UI or lot no.	Section	Township	Range	Lot Idn	Feet From The	North/South Line	Feet From The	East/West Line	County
⁹ Proposed Pool 1 VACUUM GRAYBURG SAN ANDRES					¹⁰ Proposed Pool 2				

¹¹ Work Type Code N	¹² Well Type Code O	¹³ Rotary or C.T. ROTARY	¹⁴ Lease Type Code S	¹⁵ Ground Level Elevation 4027'
¹⁶ Multiple No	¹⁷ Proposed Depth 4800'	¹⁸ Formation GRAYBURG/ S A	¹⁹ Contractor NABORS	²⁰ Spud Date 10/20/96

²¹ Proposed Casing and Cement Program

SIZE OF HOLE	SIZE OF CASING	WEIGHT PER FOOT	SETTING DEPTH	SACKS OF CEMENT	EST. TOP
11	8 5/8	24#	1550'	550 SACKS	SURFACE
7 7/8	5 1/2	15.5#	4800'	950 SACKS	SURFACE
Permit Expires 1 Year From Approval Date Unless Drilled Furtherway					

²² Describe the proposed program. If this application is to DEEPEN or PLUG BACK give the data on the present productive zone and proposed new productive zone. Describe the blowout prevention program, if any. Use additional sheets if necessary.

CEMENTING PROGRAM:

SURFACE CASING - 400 SACKS CLASS C W/ 4% GEL, 2% CACL₂ (13.5 PPG, 1.74 CF/S, 9.11 GW/S). F/B 150 SACKS CLASS C W/ 2% CACL₂ (14.8 PPG, 1.34 CF/S, 6.3 GW/S).

PRODUCTION CASING - 800 SACKS 35/65 POZ CLASS H W/ 6% GEL, 5% SALT, 1/4# FLOCELE (12.8 PPG, 1.94 CF/S, 10.5 GW/S). F/B 150 SACKS CLASS H (15.6 PPG, 1.18 CF/S, 5.2 GW/S).

THERE ARE NO OTHER OPERATORS IN THIS QUARTER QUARTER SECTION.

UNORTHODOX LOCATION: DISTRICT APPROVAL REQUESTED PER RULE 104.F.(1) FOR EFFICIENT INJECTION/ PRODUCTION PATTERN.

²³ I hereby certify that the rules and regulations of the Oil Conservation Division have been complied with and that the information given above is true and complete to the best of my knowledge and belief.		OIL CONSERVATION DIVISION	
Signature <i>C. Wade Howard</i>			
Printed Name C. Wade Howard		Approved By:	
Title Eng. Assistant		Title:	
Date 9/17/96	Telephone 688-4606	Approval Date SEP 19 1996	Expiration Date:
		Conditions of Approval: Attached <input type="checkbox"/>	

DISTRICT II

P. O. Drawer DD, Artesia, NM 88210

DISTRICT III

1000 Rio Brazos Rd., Aztec, NM 87410

DISTRICT IV

P. O. Box 2088, Santa Fe, NM 87504-2088

OIL CONSERVATION DIVISION

PO Box 2088

Santa Fe, NM 87504-2088

Submit to Appropriate District Office

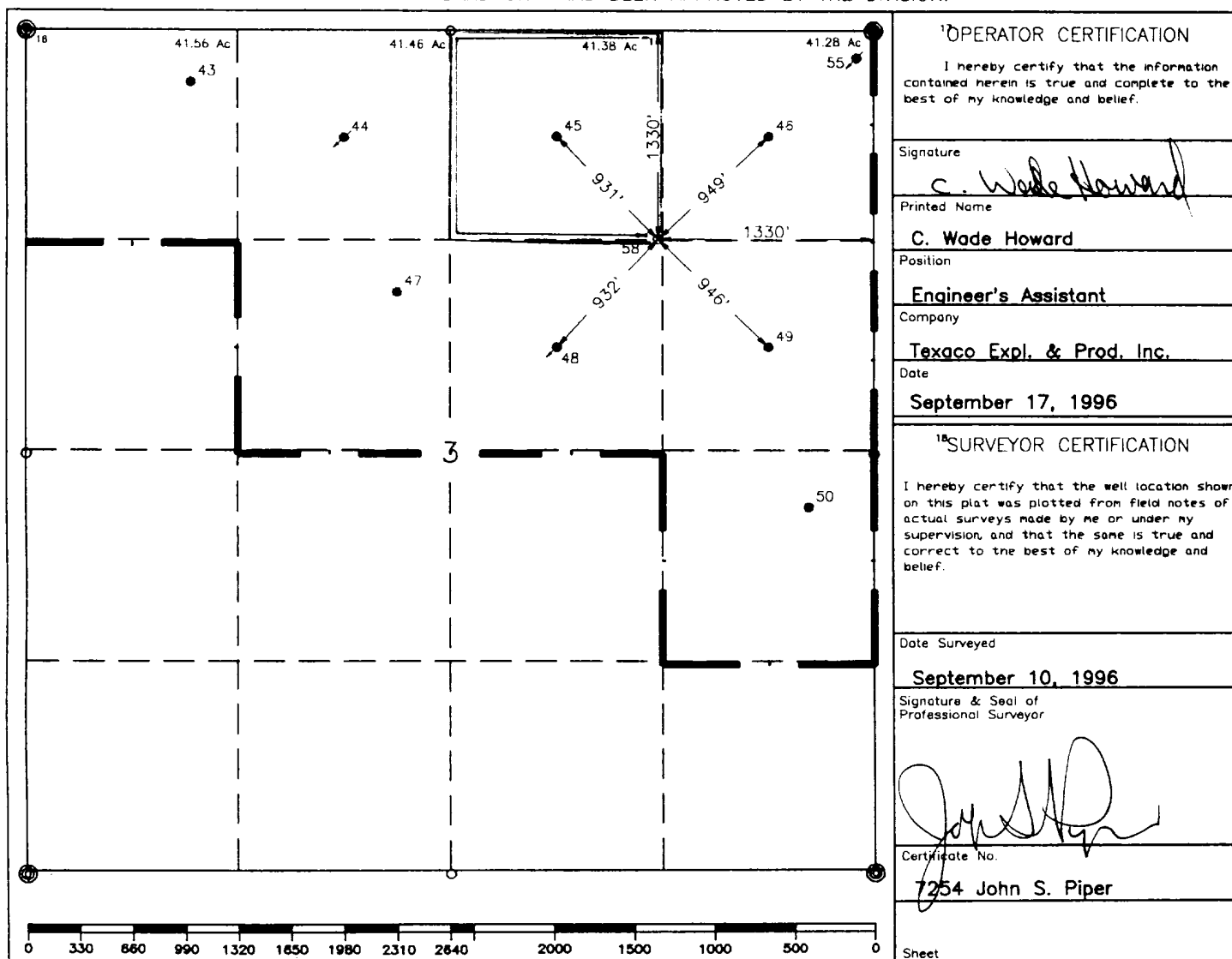
State Lease—4 copies
Fee Lease—3 copies

☐ AMENDED REPORT

WELL LOCATION AND ACREAGE DEDICATION PLAT

¹ API Number 30-025-33588		² Pool Code 62180		³ Pool Name Vacuum Grayburg San Andres					
⁴ Property Code 11126		⁵ Property Name West Vacuum Unit				⁶ Well Number 58			
⁷ GRID No. 22351		⁸ Operator Name TEXACO EXPLORATION & PRODUCTION, INC.				⁹ Elevation 4027'			
¹⁰ Surface Location									
UL or lot no. B	Section 3	Township 18-S	Range 34-E	Lot Idn	Feet from the 1330'	North/South line North	Feet from the 1330'	East/West line East	⁷ County Lea
¹¹ Bottom Hole Location If Different From Surface									
UL or lot no.	Section	Township	Range	Lot Idn	Feet from the	North/South line	Feet from the	East/West line	⁷ County
¹² Dedicated Acres 41.38		¹³ Joint or Infill		¹⁴ Consolidation Code		¹⁵ Order No.			

NO ALLOWABLE WILL BE ASSIGNED TO THIS COMPLETION UNTIL ALL INTERESTS HAVE BEEN CONSOLIDATED OR A NON-STANDARD UNIT HAS BEEN APPROVED BY THE DIVISION.

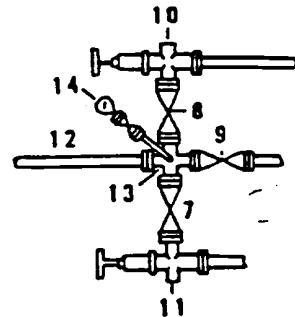
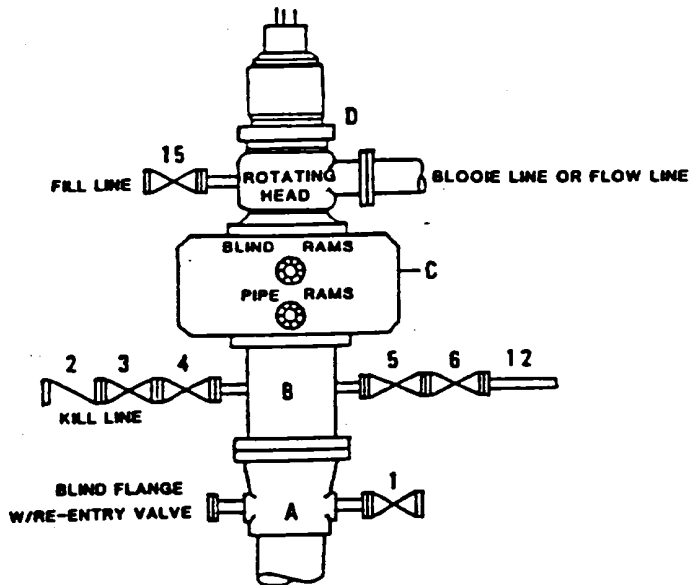


0 = Staked Location ● = Producing Well ●[↑] = Injection Well ○ = Water Supply Well ●[↓] = Plugged & Abandon Well

APPROVED BY

**DRILLING CONTROL
CONDITION II-B 3000 WP
FOR AIR DRILLING OR
WHERE NITROGEN OR AIR BLOWS ARE EXPECTED**

H₂S TRIM REQUIRED
YES _____ NO _____



DRILLING CONTROL

MATERIAL LIST - CONDITION II - B

- | | |
|------------|---|
| A | Texaco Wellhead |
| B | 3000# W.P. drilling spool with a 2" minimum flanged outlet for kill line and 3" minimum flanged outlet for choke line. |
| C | 3000# W.P. Dual ram type preventer, hydraulic operated with 1" steel, 3000# W.P. control lines (where sub-structure height is adequate, 2 - 3000# W.P. single ram type preventers may be utilized). |
| D | Rotating Head with fill up outlet and extended Blooe Line. |
| 1,3,4,7,8, | 2" minimum 3000# W.P. flanged full opening steel gate valve, or Halliburton Lo Torc Plug valve. |
| 2 | 2" minimum 3000# W.P. back pressure valve. |
| 5,6,9 | 3" minimum 3000# W.P. flanged full opening steel gate valve, or Halliburton Lo Torc Plug valve. |
| 12 | 3" minimum schedule 80, Grade "B", seamless line pipe. |
| 13 | 2" minimum x 3" minimum 3000# W.P. flanged cross. |
| 10,11 | 2" minimum 3000# W.P. adjustable choke bodies. |
| 14 | Cameron Mud Gauge or equivalent (location optional in choke line). |
| 15 | 2" minimum 3000# W.P. flanged or threaded full opening steel gate valve, or Halliburton Lo Torc Plug valve. |



TEXACO, INC.
MIDLAND DIVISION
MIDLAND, TEXAS



SCALE	DATE	EST NO	DRG NO
DRAWN BY			
CHECKED BY			
APPROVED BY			

EXHIBIT C