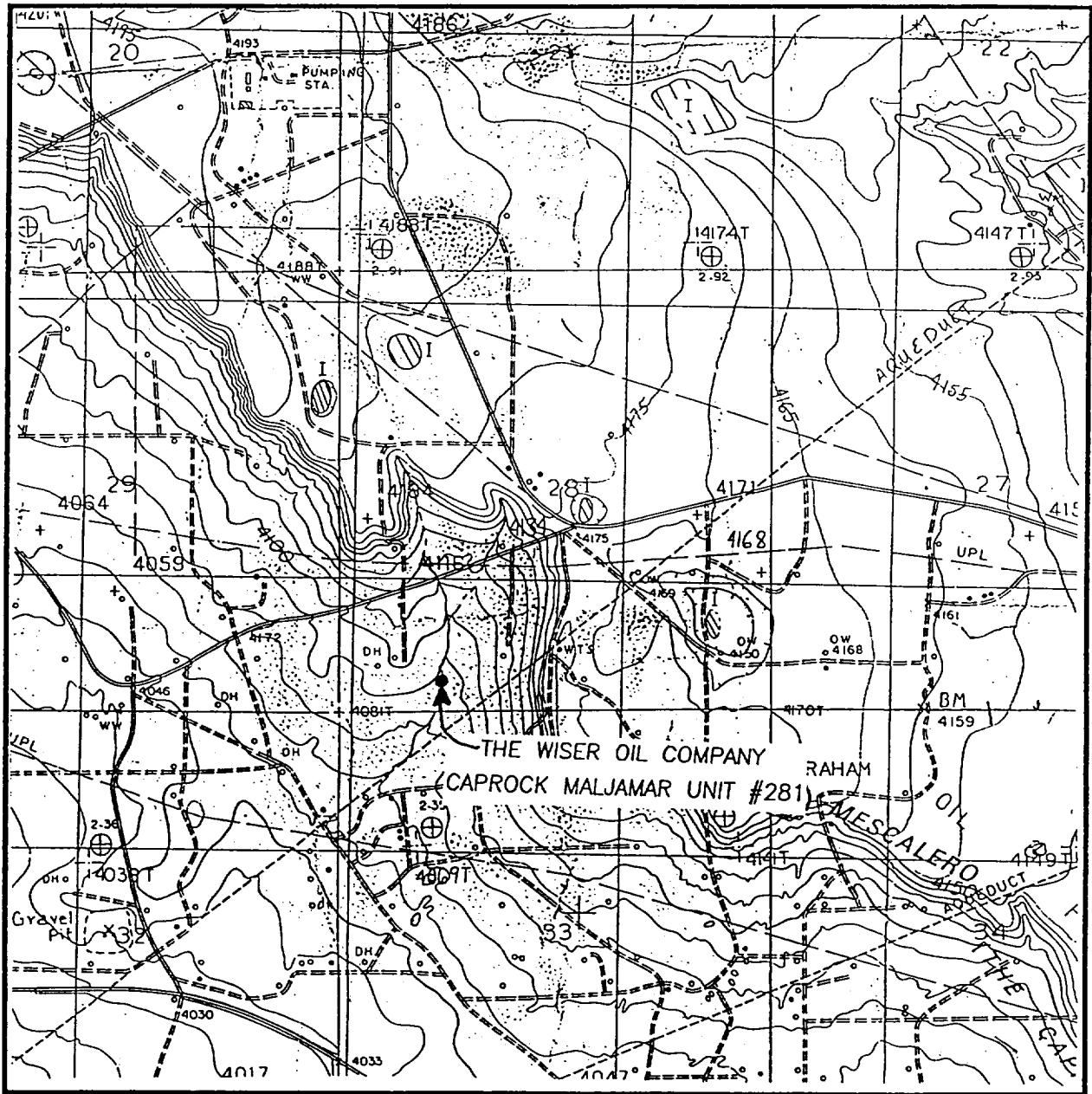


LOCATION VERIFICATION MAP



SCALE: 1" = 2000'

CONTOUR INTERVAL - 10'

SEC. 28 TWP. 17-S RGE. 33-E

SURVEY N.M.P.M.

COUNTY LEA

DESCRIPTION 330' FSL & 1210' FWL

ELEVATION 4088'

OPERATOR THE WISER OIL COMPANY

LEASE CAPROCK MALJAMAR UNIT

U.S.G.S. TOPOGRAPHIC MAP

DOG LAKE, N.M.

JOHN WEST ENGINEERING
HOBBS, NEW MEXICO
(505) 393-3117