

District I
PO Box 1980, Hobbs, NM 88241-1980
District II
PO Drawer DD, Artesia, NM 88211-0719
District III
1000 Rio Brazos Rd., Aztec, NM 87410
District IV
PO Box 2088, Santa Fe, NM 87504-2088

State of New Mexico
Energy, Minerals & Natural Resources Department

OIL CONSERVATION DIVISION
PO Box 2088
Santa Fe, NM 87504-2088

Form C-101
Revised February 10, 1994
Instructions on back
Submit to Appropriate District Office
State Lease - 6 Copies
Fee Lease - 5 Copies

☐ AMENDED REPORT

APPLICATION FOR PERMIT TO DRILL, RE-ENTER, DEEPEN, PLUGBACK, OR ADD A ZONE

¹ Operator Name and Address. Cross Timbers Operating Company 3000 N. Garfield, Suite 175 Midland, Texas 79705		² OGRID Number 005380
⁴ Property Code 003355	⁵ Property Name SEMGSAU	³ API Number 30-025-33868
		⁶ Well No. 713

⁷ Surface Location									
UL or lot no.	Section	Township	Range	Lot Idn	Feet from the	North/South line	Feet from the	East/West line	County
J	29	17S	33E		1700	South	1400	East	Lea

⁸ Proposed Bottom Hole Location If Different From Surface									
UL or lot no.	Section	Township	Range	Lot Idn	Feet from the	North/South line	Feet from the	East/West line	County
⁹ Proposed Pool 1 Maljamar Grayburg San Andres					¹⁰ Proposed Pool 2				

¹¹ Work Type Code N	¹² Well Type Code O	¹³ Cable/Rotary R	¹⁴ Lease Type Code S	¹⁵ Ground Level Elevation 4082' GL
¹⁶ Multiple No	¹⁷ Proposed Depth 4500'	¹⁸ Formation San Andres	¹⁹ Contractor Not Selected	²⁰ Spud Date Approx 3-12-97

²¹ Proposed Casing and Cement Program					
Hole Size	Casing Size	Casing weight/foot	Setting Depth	Sacks of Cement	Estimated TOC
12-1/4"	8-5/8"	24#	400	250	Surface
7-7/8"	5-1/2"	15.5#	4500	850	Surface

²² Describe the proposed program. If this application is to DEEPEN or PLUG BACK give the data on the present productive zone and proposed new productive zone. Describe the blowout prevention program, if any. Use additional sheets if necessary.

1. Drill 12-1/4" hole to \pm 400'. Set 8-5/8" csg, circ cmt to surface.
 2. Drill 7-7/8" hole to \pm 4500'. Set 5-1/2" csg, circ cmt to surface.
- BOPE: 11" 3000 PSIG, hydraulic operated double ram with 3000 PSIG choke manifold.

Permit Expires 1 Year From Approval
Date Unless Drilling Underway

²³ I hereby certify that the information given above is true and complete to the best of my knowledge and belief. Signature: <i>Mark A. Gosch</i>		OIL CONSERVATION DIVISION	
Printed name: Mark A. Gosch			
Title: Drilling Engineer		Approved by: <i>[Signature]</i>	
Date: 3-4-97		Approval Date: MAR 06 1997	
Phone: 915-682-8873		Expiration Date:	
		Conditions of Approval: Attached <input type="checkbox"/>	

D

DISTRICT I
P.O. Box 1990, Hobbs, NM 88241-1990

State of New Mexico

Energy, Minerals and Natural Resources Department

Form C-102
Revised February 10, 1994
Submit to Appropriate District Office
State Lease - 4 Copies
Fee Lease - 3 Copies

DISTRICT II
P.O. Drawer DD, Artesia, NM 88211-0719

DISTRICT III
1000 Rio Brazos Rd., Aztec, NM 87410

OIL CONSERVATION DIVISION

P.O. Box 2088
Santa Fe, New Mexico 87504-2088

DISTRICT IV
P.O. Box 2088, Santa Fe, NM 87504-2088

☐ AMENDED REPORT

WELL LOCATION AND ACREAGE DEDICATION PLAT

API Number 30-025-33868		Pool Code 43329	Pool Name Maljamar Grayburg San Andres
Property Code 003355	Property Name SEMGSAU		Well Number 713
OGRID No. 005380	Operator Name CROSS TIMBERS OPERATING CO.		Elevation 4082

Surface Location

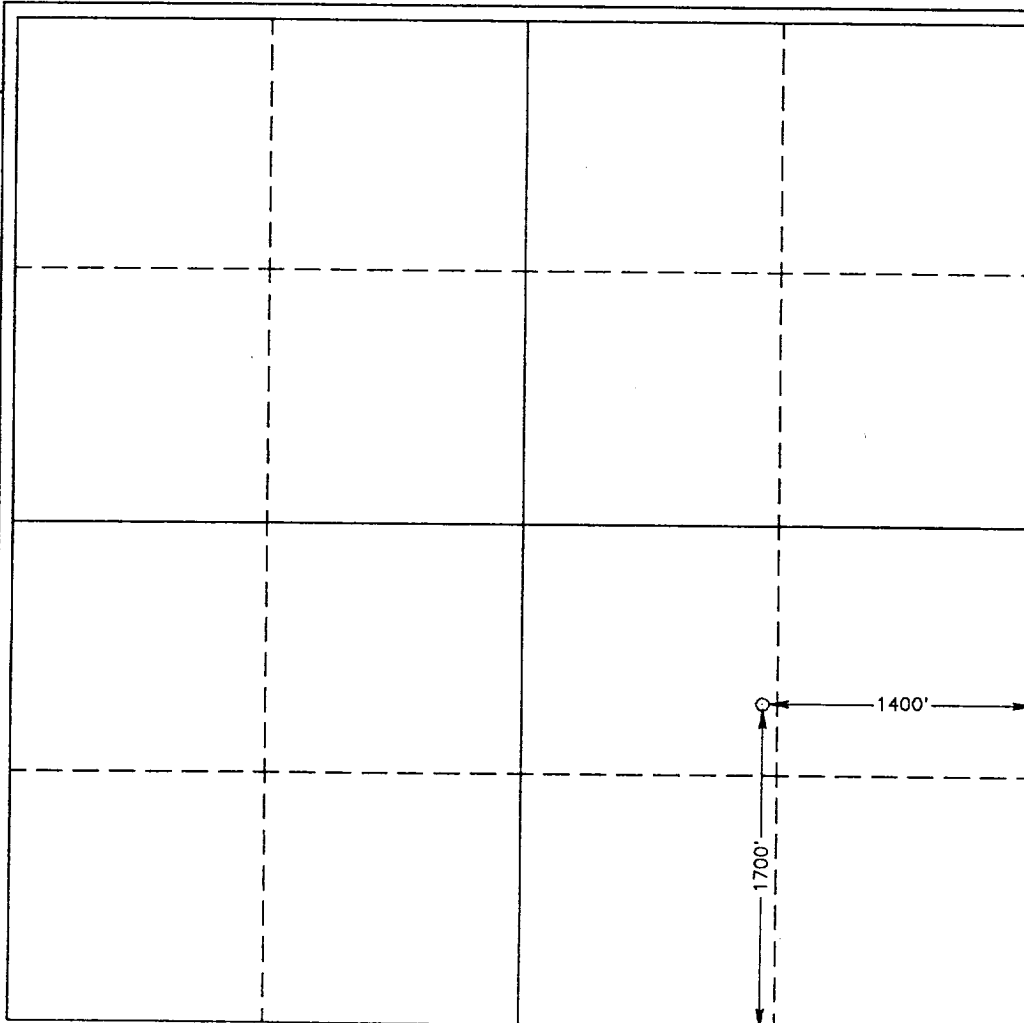
UL or lot No.	Section	Township	Range	Lot Idn	Feet from the	North/South line	Feet from the	East/West line	County
J	29	17 S	33 E		1700	SOUTH	1400	EAST	LEA

Bottom Hole Location If Different From Surface

UL or lot No.	Section	Township	Range	Lot Idn	Feet from the	North/South line	Feet from the	East/West line	County

Dedicated Acres	Joint or Infill	Consolidation Code	Order No.
40	I	U	

NO ALLOWABLE WILL BE ASSIGNED TO THIS COMPLETION UNTIL ALL INTERESTS HAVE BEEN CONSOLIDATED
OR A NON-STANDARD UNIT HAS BEEN APPROVED BY THE DIVISION



OPERATOR CERTIFICATION

I hereby certify the the information
contained herein is true and complete to the
best of my knowledge and belief.

Mark A. Gosch
Signature

Mark A. Gosch
Printed Name

Drilling Engineer
Title

3-4-97
Date

SURVEYOR CERTIFICATION

I hereby certify that the well location shown
on this plat was plotted from field notes of
actual surveys made by me or under my
supervision, and that the same is true and
correct to the best of my belief.

FEBRUARY 26, 1997

Date Surveyed JLP

Signature of Seal of
Professional Surveyor

Ronald S. Eidson
NEW MEXICO
2-28-97
P.W.O. Num. 97-110323

Certificate No. JOHN W. WEST, 676
RONALD S. EIDSON, 3239
GARRIS, EIDSON, 12641