

District I
PO Box 1980, Hobbs, NM 88241-1980
District II
PO Drawer DD, Artesia, NM 88211-0719
District III
1000 Rio Brazos Rd., Aztec, NM 87410
District IV
PO Box 2088, Santa Fe, NM 87504-2088

State of New Mexico
Energy, Minerals & Natural Resources Department

OIL CONSERVATION DIVISION
PO Box 2088
Santa Fe, NM 87504-2088

Form C-101
Revised February 10, 1994
Instructions on back
Submit to Appropriate District Office
State Lease - 6 Copies
Fee Lease - 5 Copies

☐ AMENDED REPORT

APPLICATION FOR PERMIT TO DRILL, RE-ENTER, DEEPEN, PLUGBACK, OR ADD A ZONE

Operator Name and Address. Rand Paulson Oil Company, Inc. 508 W. Wall, Ste. 100 Midland, TX. 79701		OGRID Number 159123
Property Code 20856	Property Name Carter	API Number 30-025-33968
		Well No. 1

Surface Location

UL or lot no.	Section	Township	Range	Lot Idn	Feet from the	North/South line	Feet from the	East/West line	County
Lot 2	5	18-S	39-E		990	North	2310	West	Lea

Proposed Bottom Hole Location If Different From Surface

UL or lot no.	Section	Township	Range	Lot Idn	Feet from the	North/South line	Feet from the	East/West line	County

Proposed Pool 1 Wildcat	Proposed Pool 2
----------------------------	-----------------

Work Type Code N	Well Type Code O	Cable/Rotary R	Lease Type Code P	Ground Level Elevation
Multiple NA	Proposed Depth 12,000	Formation Devonian	Contractor Norton	Spud Date 5-10-97

Proposed Casing and Cement Program

Hole Size	Casing Size	Casing weight/foot	Setting Depth	Sacks of Cement	Estimated TOC
17 1/2"	13 3/8"	48	400	400	Surface
11"	8 5/8"	32	4700	1200	Surface
7 7/8"	5 1/2"	17	12000	1000	4500'

Describe the proposed program. If this application is to DEEPEN or PLUG BACK give the data on the present productive zone and proposed new productive zone. Describe the blowout prevention program, if any. Use additional sheets if necessary.

Propose to drill a devonian well to 12,000'. Cement will be circulated to surface on 13 3/8" and 8 5/8" casing. Plan to test significant shows and evaluate with adequate logging program. Completion or abandonment will be performed in accordance with prudent practices and regulatory requirements. A double ram series 900 BOP and choke manifold will be used from 8 5/8" casing to total depth.

Permit Expires 1 Year From Approval
Date Unless Drilling Underway

I hereby certify that the information given above is true and complete to the best of my knowledge and belief.

Signature:

O. H. Routh

Printed name:

O. H. Routh

Title:

Agent

Date:

5/1/97

Phone:

915-687-0323

OIL CONSERVATION DIVISION

Approved by:

Original Signed by
Paul Kautz
Geologist

Title:

Approval Date:

MAY 19 1997

Expiration Date:

Conditions of Approval:

Attached ☐

DISTRICT I
P.O. Box 1980, Hobbs, NM 88241-1980

DISTRICT II
P.O. Drawer DD, Artesia, NM 88211-0719

DISTRICT III
1000 Rio Brasos Rd., Artec, NM 87410

DISTRICT IV
P.O. Box 2088, Santa Fe, NM 87504-2088

State of New Mexico
Energy, Minerals and Natural Resources Department

Form C-102
Revised February 10, 1994
Submit to Appropriate District Office
State Lease - 4 Copies
Fee Lease - 3 Copies

OIL CONSERVATION DIVISION
P.O. Box 2088
Santa Fe, New Mexico 87504-2088

☐ AMENDED REPORT

WELL LOCATION AND ACREAGE DEDICATION PLAT

API Number 3D-025-33968	Pool Code	Pool Name WILDCAT
Property Code 20856	Property Name CARTER	Well Number 1
OGRID No. 159123	Operator Name RAND PAULSON OIL COMPANY INC.	Elevation 3636

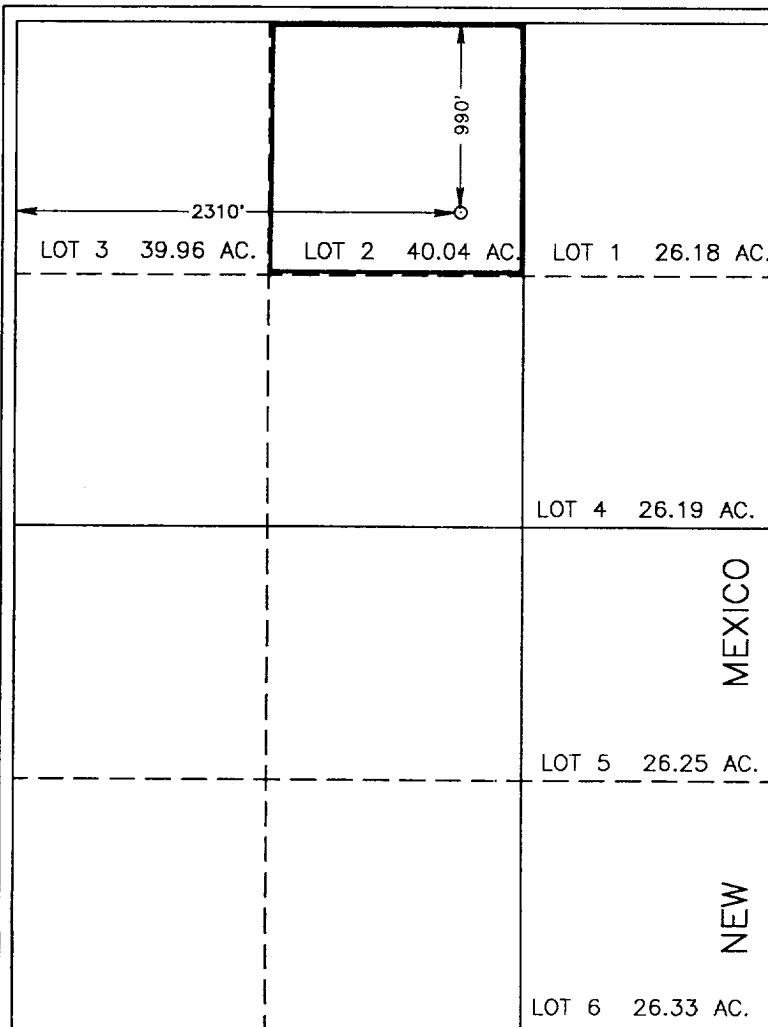
Surface Location

UL or lot No. C/2	Section 5	Township 18 S	Range 39 E	Lot Idn	Feet from the 990	North/South line NORTH	Feet from the 2310	East/West line WEST	County LEA
-----------------------------	---------------------	-------------------------	----------------------	---------	-----------------------------	----------------------------------	------------------------------	-------------------------------	----------------------

Bottom Hole Location If Different From Surface

UL or lot No.	Section	Township	Range	Lot Idn	Feet from the	North/South line	Feet from the	East/West line	County
Dedicated Acres 40	Joint or Infill N	Consolidation Code	Order No.						

NO ALLOWABLE WILL BE ASSIGNED TO THIS COMPLETION UNTIL ALL INTERESTS HAVE BEEN CONSOLIDATED
OR A NON-STANDARD UNIT HAS BEEN APPROVED BY THE DIVISION



TEXAS

OPERATOR CERTIFICATION

I hereby certify the the information
contained herein is true and complete to the
best of my knowledge and belief.

[Signature]
Signature
O.H. ROUTH
Printed Name
AGENT
Title
5-12-97
Date

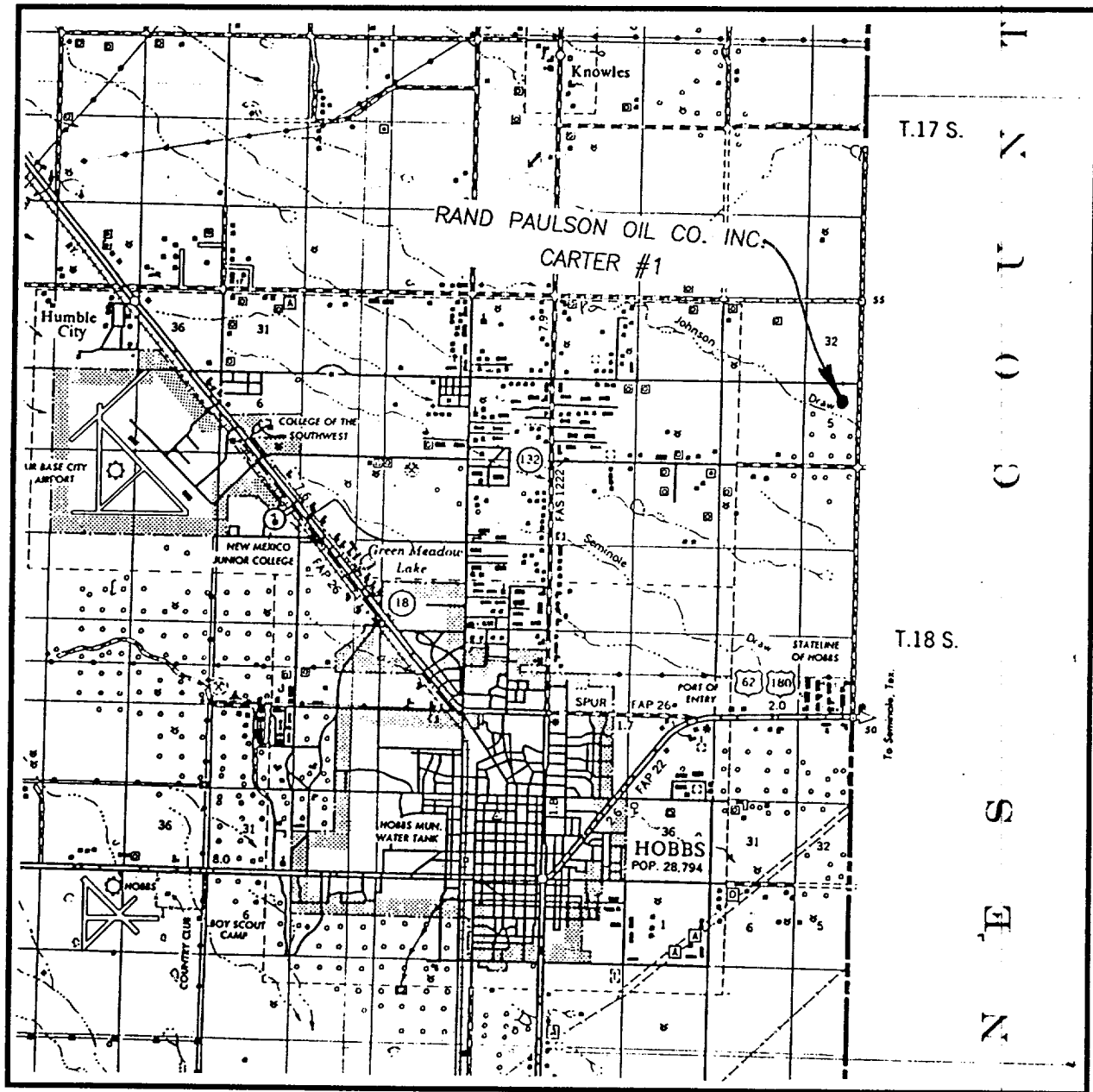
SURVEYOR CERTIFICATION

I hereby certify that the well location shown
on this plat was plotted from field notes of
actual surveys made by me or under my
supervision, and that the same is true and
correct to the best of my belief.

MAY 5, 1997

Date Surveyed JLP
Signature & Seal of
Professional Surveyor
[Signature]
W.D. EIDSON 5-05-97
W.D. EIDSON 5-05-97
Certificate No. JOHN W. WEST, 676
RONALD EIDSON, 3239
GARY G. EIDSON, 12641

VICINITY MAP



SCALE: 1" = 2 MILES

SEC. 5 TWP. 18-S RGE. 39-E

SURVEY N.M.P.M.

COUNTY LEA

DESCRIPTION 990' FNL & 2310' FWL

ELEVATION 3636'

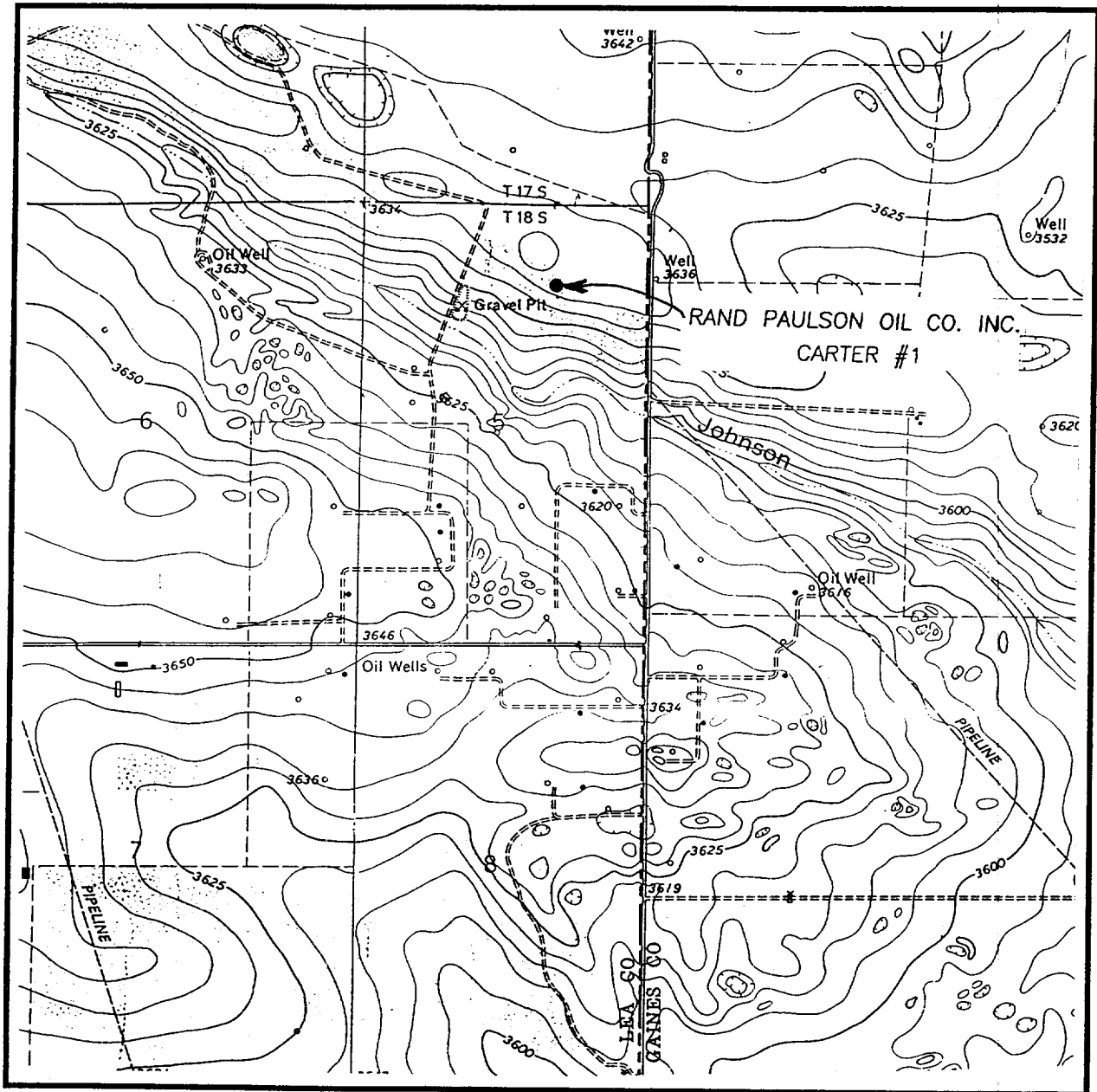
OPERATOR RAND PAULSON OIL CO. INC.

LEASE CARTER

**JOHN WEST ENGINEERING
HOBBS, NEW MEXICO**

(505) 393-3117

LOCATION VERIFICATION MAP



SCALE: 1" = 2000'

CONTOUR INTERVAL - 5'

SEC. 5 TWP. 18-S RGE. 39-E

SURVEY N.M.P.M.

COUNTY LEA

DESCRIPTION 990' FNL & 2310' FWL

ELEVATION 3636'

OPERATOR RAND PAULSON OIL CO. INC.

LEASE CARTER

U.S.G.S. TOPOGRAPHIC MAP

HUMBLE CITY SE, N.M., TEX.

JOHN WEST ENGINEERING

HOBBS, NEW MEXICO

(505) 393-3117