

DISTRICT I
P. O. Box 1980, Hobbs, NM 88240

DISTRICT II
P. O. Drawer DD, Artesia, NM 88210

DISTRICT III
1000 Rio Brazos Rd., Aztec, NM 87410

DISTRICT IV
P. O. Box 2088, Santa Fe, NM 87504-2088

State of New Mexico
Energy, Minerals and Natural Resources Department

OIL CONSERVATION DIVISION
PO Box 2088
Santa Fe, NM 87504-2088

Form C-102
Revised February 10, 1994

Instructions on back

Submit to Appropriate District Office

State Lease-4 copies
Fee Lease-3 copies

WELL LOCATION AND ACREAGE DEDICATION PLAT

☐ AMENDED REPORT

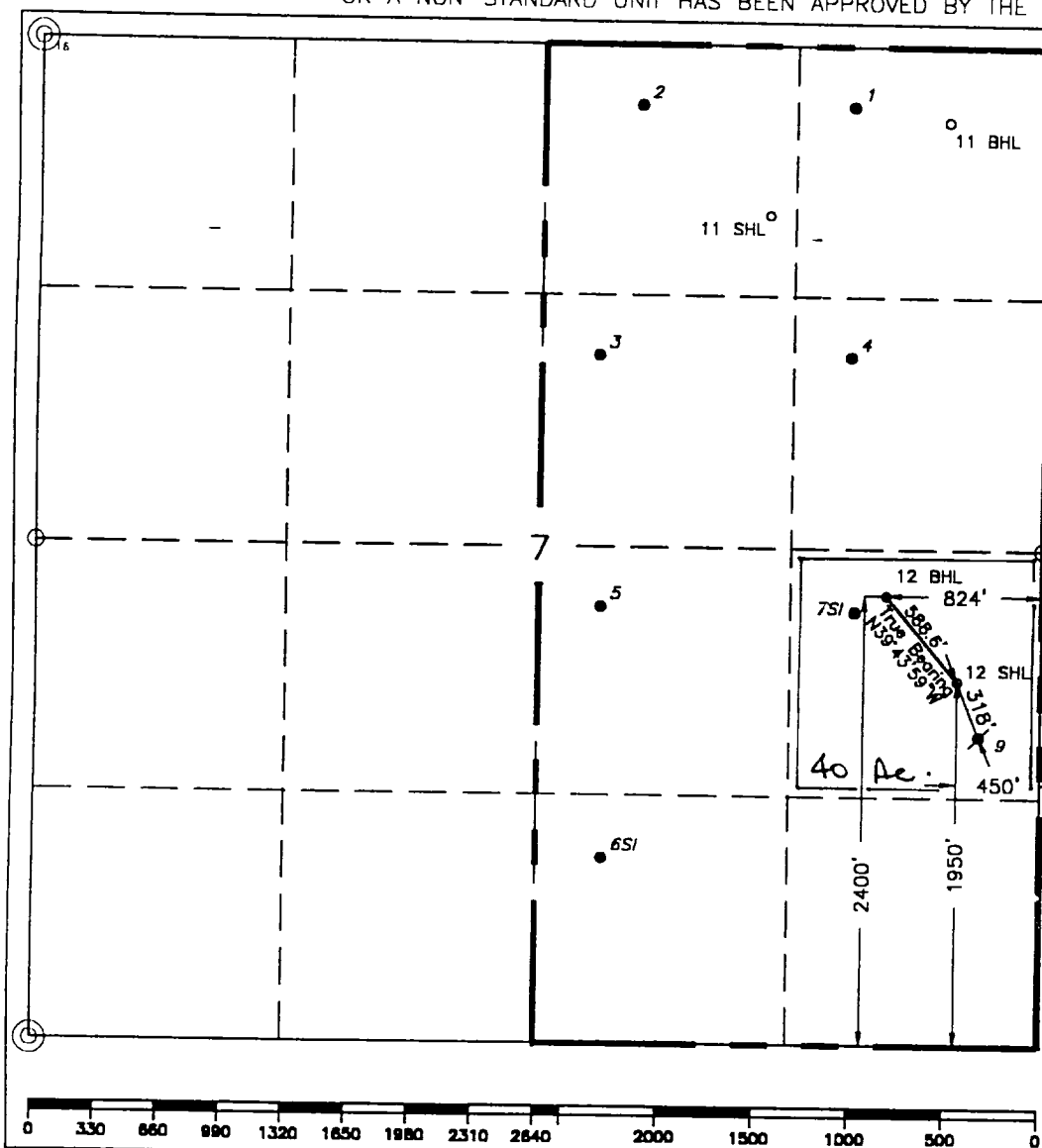
1 API Number 30-025-34098		2 Pool Code 6200		3 Pool Name Vacuum; Devonian, Mid Mid	
4 Property Code 11093		5 Property Name State "AN"			
6 OGRID No. 22351		7 Well Number 12			
8 Operator Name TEXACO EXPLORATION & PRODUCTION, INC.				9 Elevation 3959'	

10 Surface Location									
UL or lot no. 1	Section 7	Township 18-S	Range 35-E	Lot Idn	Feet from the 1950'	North/South line South	Feet from the 450'	East/West line East	County Lea

11 Bottom Hole Location If Different From Surface									
UL or lot no. 1	Section 7	Township 18-S	Range 35-E	Lot Idn	Feet from the 2400'	North/South line South	Feet from the 824'	East/West line East	County Lea

12 Dedicated Acres 40	13 Joint or Infill	14 Consolidation Code	15 Order No.
--------------------------	--------------------	-----------------------	--------------

NO ALLOWABLE WILL BE ASSIGNED TO THIS COMPLETION UNTIL ALL INTERESTS HAVE BEEN CONSOLIDATED
OR A NON-STANDARD UNIT HAS BEEN APPROVED BY THE DIVISION.



16 OPERATOR CERTIFICATION	
I hereby certify that the information contained herein is true and complete to the best of my knowledge and belief.	
Signature	
Printed Name C. Wade Howard	
Position Engineer's Assistant	
Company Texaco Expl. & Prod. Inc.	
Date June 12, 1997	
17 SURVEYOR CERTIFICATION	
I hereby certify that the well location shown on this plat was plotted from field notes of actual surveys made by me or under my supervision, and that the same is true and correct to the best of my knowledge and belief.	
Date Surveyed June 4, 1997	
Signature & Seal of Professional Surveyor	
Certificate No. 7234 John S. Piper	
Sheet	

○ = Staked Location ● = Producing Well ↗ = Injection Well ◇ = Water Supply Well ◆ = Plugged & Abandon Well
⊙ = Found Section Corner, 2 or 3" Iron Pipe & GLO B.C. ○ = Found 1/4 Section Corner, 1" Iron Pipe & GLO B.C.

ADDITIONAL INFORMATION ON THE LOCATION

State Plane Coordinates	
Northing 641415.41 (SHL) 641865.09 (BHL)	Easting 800639.59 (SHL) 800259.75 (BHL)
Latitude 32°45'37.609" (SHL) 32°45'42.088" (BHL)	Longitude 103°29'23.350" (SHL) 103°29'27.756" (BHL)
Zone North American Datum	Combined Grid Factor
East 1983	0.9997915
Drawing File	Coordinate File
St_AN12.dwg	Buckeye
Field Book	
Lea County 16, Page 65	