

District I
P. O. Box 1980, Hobbs, NM 88241-1980
District II
P. O. Drawer DD, Artesia, NM 88211-0719
District III
1000 Rio Brazos Rd., Aztec, NM 87410
District IV
P. O. Box 2088, Santa Fe, NM 87504-2088

State of New Mexico
Energy, Minerals & Natural Resources Department

OIL CONSERVATION DIVISION
P. O. Box 2088
Santa Fe, NM 87504-2088

Form C-101
Revised February 10, 1994
Instructions on back
Submit to Appropriate District Office
State Lease - 6 Copies
Fee Lease - 5 Copies

☐ AMENDED REPORT

APPLICATION FOR PERMIT TO DRILL, RE-ENTER, DEEPEN, PLUGBACK, OR ADD A ZONE

¹ Operator Name and Address. The Wiser Oil Company C/O J. O. Easley, Inc. P. O. Box 245 Artesia, NM 88211-0245		² OGRID Number 022922
		³ API Number 30-025-34110
⁴ Property Code 014578	⁵ Property Name Caprock Maljamar Unit	⁶ Well No. 282

⁷ Surface Location

UL or lot no.	Section	Township	Range	Lot Idn	Feet from the	North/South Line	Feet from the	East/West line	County
N	28	17S	33E		1310	South	1892	West	Lea

⁸ Proposed Bottom Hole Location If Different From Surface

UL or lot no.	Section	Township	Range	Lot Idn	Feet from the	North/South Line	Feet from the	East/West line	County

⁹ Proposed Pool 1

Maljamar Grayburg San Andres 43329

¹⁰ Proposed Pool 2

¹¹ Work Type Code N	¹² Well Type Code P	¹³ Cable/Rotary R	¹⁴ Lease Type Code P	¹⁵ Ground Level Elevation 4118
¹⁶ Multiple	¹⁷ Proposed Depth 5500'	¹⁸ Formation San Andres	¹⁹ Contractor	²⁰ Spud Date ASAP

²¹ Proposed Casing and Cement Program

Hole size	Casing Size	Casing weight/foot	Setting Depth	Sacks of Cement	Estimated TOC
12 1/4"	8 5/8" J-55	20#	350'	300 Class "C"	circulate to surf.
7 7/8"	5 1/2" J-55	17#	5500'	700 Halli. Lite	circulate to 100'
				650 Prem.Plus	above 85/8"
					casing shoe

²² Describe the proposed program. If this application is to DEEPEN or PLUG BACK give the data on the present productive zone and proposed new productive zone. Describe the blowout prevention program, if any. Use additional sheets if necessary.

Propose to drill above captioned well to a total depth of 5500' with rotary rig. If commercial production is indicated, well will be perforated and stimulated as necessary.

Blow Out Prevention: 10" Series 900 Type "E" Shaffer Hydraulic BOP will be used.

²³ I hereby certify that the information given above is true and complete to the best of my knowledge and belief. Signature: <i>Michael R. Burch</i>		OIL CONSERVATION DIVISION	
Printed name: Michael R. Burch, CPL		Approved by: <i>Paul Kautz</i>	
Title: Agent for The Wiser Oil Company		Title: <i>Geologist</i>	
Date: 8-21-97		Approval Date: AUG 22 1997	Expiration Date:
Phone: 505-746-1070		Conditions of Approval: Attached <input type="checkbox"/>	

Permit Expires 1 Year From Approval
Date Unless Drilling Underway

DISTRICT I
P.O. Box 1980, Hobbs, NM 88241-1980

State of New Mexico

Energy, Minerals and Natural Resources Department

Form C-102
Revised February 10, 1994
Submit to Appropriate District Office
State Lease - 4 Copies
Fee Lease - 3 Copies

DISTRICT II
P.O. Drawer DD, Artesia, NM 88211-0719

DISTRICT III
1000 Rio Brazos Rd., Aztec, NM 87410

DISTRICT IV
P.O. Box 2088, Santa Fe, NM 87504-2088

OIL CONSERVATION DIVISION

P.O. Box 2088
Santa Fe, New Mexico 87504-2088

☐ AMENDED REPORT

WELL LOCATION AND ACREAGE DEDICATION PLAT

API Number 30-015025-34110	Pool Code 43329	Pool Name Maljamar Grayburg San Andres
Property Code 14578	Property Name CAPROCK MALJAMAR UNIT	Well Number 282
GRID No. 022922	Operator Name THE WISER OIL COMPANY	Elevation 4118

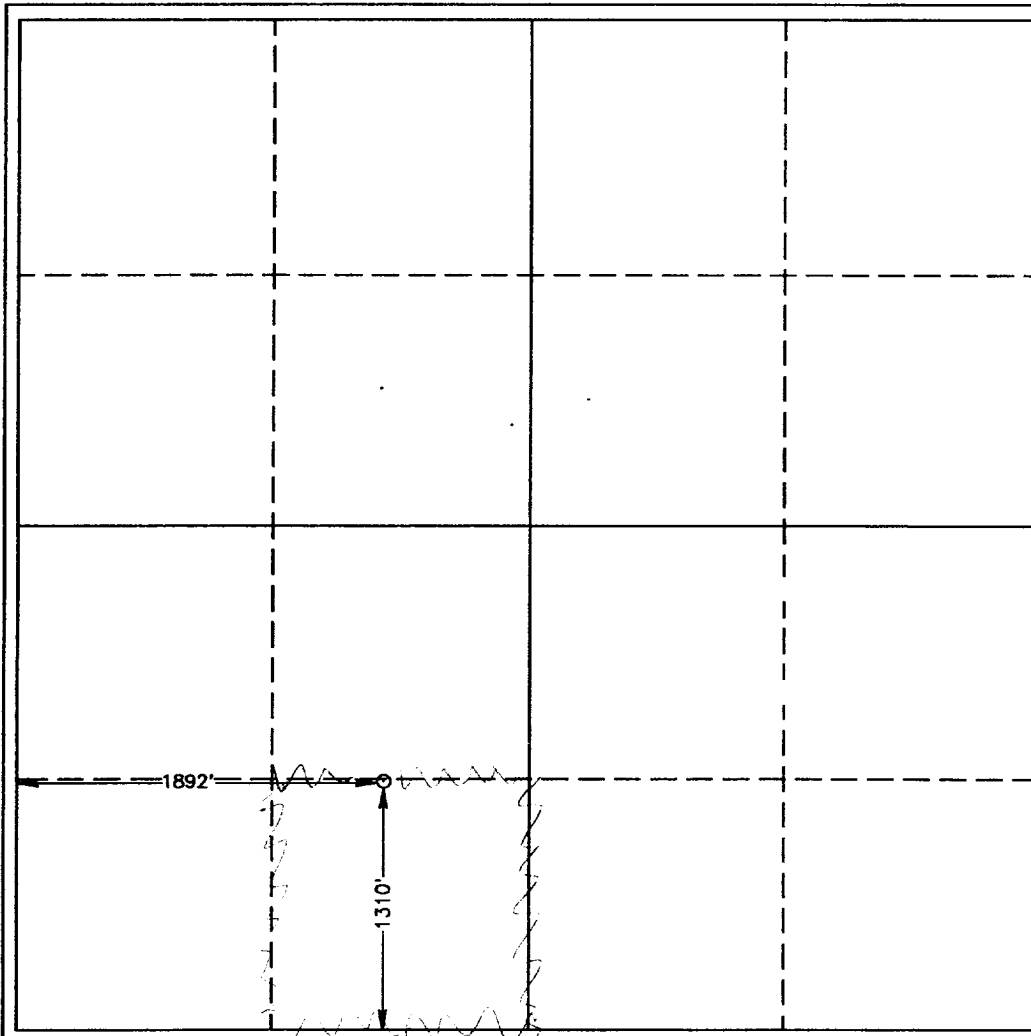
Surface Location

UL or lot No. N	Section 28	Township 17 S	Range 33 E	Lot Idn	Feet from the 1310	North/South line SOUTH	Feet from the 1892	East/West line WEST	County LEA
--------------------	---------------	------------------	---------------	---------	-----------------------	---------------------------	-----------------------	------------------------	---------------

Bottom Hole Location If Different From Surface

UL or lot No.	Section	Township	Range	Lot Idn	Feet from the	North/South line	Feet from the	East/West line	County
Dedicated Acres 40					Joint or Infill	Consolidation Code	Order No.		

NO ALLOWABLE WILL BE ASSIGNED TO THIS COMPLETION UNTIL ALL INTERESTS HAVE BEEN CONSOLIDATED
OR A NON-STANDARD UNIT HAS BEEN APPROVED BY THE DIVISION



OPERATOR CERTIFICATION

I hereby certify the the information
contained herein is true and complete to the
best of my knowledge and belief.

Signature
Michael R. Burch, CPL
Printed Name for The Wiser Oil
Company
Title 8-21-97
Date

SURVEYOR CERTIFICATION

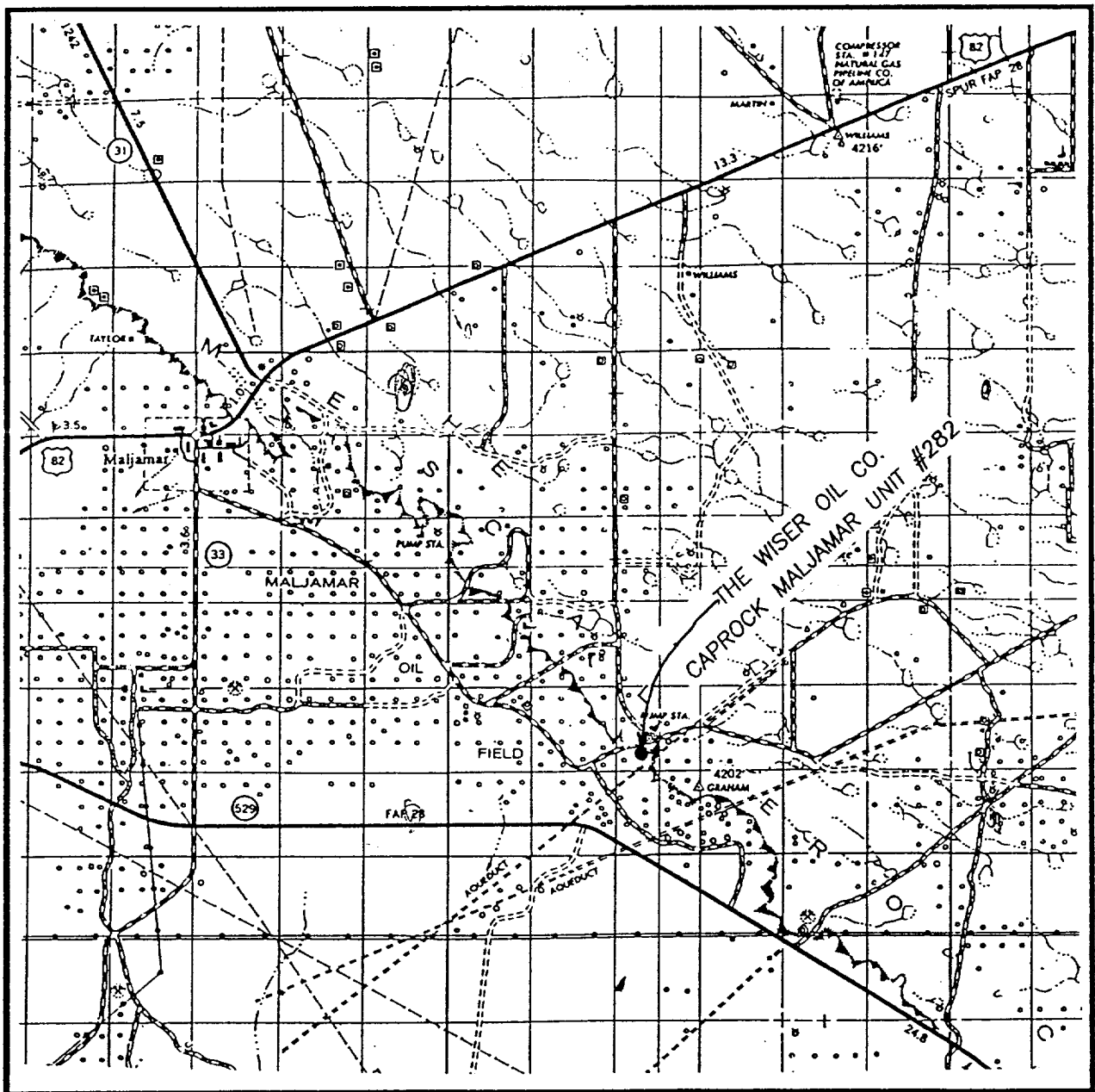
I hereby certify that the well location shown
on this plat was plotted from field notes of
actual surveys made by me or under my
supervision, and that the same is true and
correct to the best of my belief.

AUGUST 19, 1997

Date Surveyed JLP
Signature & Seal of
Professional Surveyor
W.O. Num. 97-11-1383

Certificate No. RONALD J. EIDSON, 3239
GARY G. EIDSON, 12641

VICINITY MAP



SCALE: 1" = 2 MILES

SEC. 28 TWP. 17-S RGE. 33-E
 SURVEY N.M.P.M.
 COUNTY LEA
 DESCRIPTION 1310' FSL & 1892' FWL
 ELEVATION 4181'
 OPERATOR THE WISER OIL CO.
 LEASE CAPROCK MALJAMAR UNIT

JOHN WEST ENGINEERING
HOBBS, NEW MEXICO
 (505) 393-3117

LOCATION VERIFICATION MAP



SCALE: 1" = 2000'

CONTOUR INTERVAL - 10'
SUPPLEMENTAL CONTOUR INTERVAL - 5'

SEC. 28 TWP. 17-S RGE. 33-E

SURVEY N.M.P.M.

COUNTY LEA

DESCRIPTION 1310' FSL & 1892' FWL

ELEVATION 4181'

OPERATOR THE WISER OIL CO.

LEASE CAPROCK MALJAMAR UNIT

U.S.G.S. TOPOGRAPHIC MAP

DOG LAKE, N.M.

JOHN WEST ENGINEERING
HOBBS, NEW MEXICO
(505) 393-3117