

SUBMIT TRIPLICATE\*

(Other instructions on  
reverse side)FORM APPROVED  
OMB NO. 1004-0136  
Expires: February 28, 1995UNITED STATES  
DEPARTMENT OF THE INTERIOR  
BUREAU OF LAND MANAGEMENT

## APPLICATION FOR PERMIT TO DRILL OR DEEPEN

## 1a. TYPE OF WORK

DRILL ☒DEEPEN ☐

## b. TYPE OF WELL

OIL  
WELL ☒GAS  
WELL ☐OTHER ☐SINGLE  
ZONE ☐MULTIPLE  
ZONE ☐

## 2. NAME OF OPERATOR

Seely Oil Co.

817/332-1377

## 3. ADDRESS AND TELEPHONE NO.

815 W. 10th

Ft. Worth, TX 76102

## 4. LOCATION OF WELL (Report location clearly and in accordance with any State requirements.)\*

At surface

1980' FNL &amp; 660' FEL

At proposed prod. zone

Same

Unit H

## 14. DISTANCE IN MILES AND DIRECTION FROM NEAREST TOWN OR POST OFFICE\*

27 Miles NW of Hobbs, NM

## 15. DISTANCE FROM PROPOSED\*

LOCATION TO NEAREST  
PROPERTY OR LEASE LINE, FT.  
(Also to nearest drlg. unit line, if any)

660'

## 16. NO. OF ACRES IN LEASE

1,074.69

## 18. DISTANCE FROM PROPOSED LOCATION\*

TO NEAREST WELL, DRILLING, COMPLETED,  
OR APPLIED FOR, ON THIS LEASE, FT.

1044'

## 19. PROPOSED DEPTH

4,700'

17. NO. OF ACRES ASSIGNED  
TO THIS WELL

40

## 20. ROTARY OR CABLE TOOLS

Rotary

## 21. ELEVATIONS (Show whether DF, RT, GR, etc.)

4008' GL

## 22. APPROX. DATE WORK WILL START\*

March 1, 1998

## 23.

## PROPOSED CASING AND CEMENTING PROGRAM

## CAMERON CONTROLLED WATER BASIN

SIZE OF HOLE	GRADE, SIZE OF CASING	WEIGHT PER FOOT	SETTING DEPTH	QUANTITY OF CEMENT
11"	8 5/8" J-55	23.0#	1,750'	Circ. 580 <del>WATER</del>
7 7/8"	5 1/2" J-55	15.5#	4,700'	200 sx HL + 150sx Poz

## MUD PROGRAM:

0' - 1750': Fresh water spud mud:

1750' - 4100': Brine mud:

4100' - 4700': Cut Brine mud w/gel:

## MUD WT.

9.3 ppg

10.0 ppg

8.8 ppg

## VIS.

33

32

32

## W/L Control

No W/L control.

No W/L control.

W/L control 15cc.

## BOP PROGRAM:

A 10" 3000 psi wp 900 Cameron Space Saver, double ram BOP, will installed on the 8 5/8" casing. Casing and BOP will be tested before drilling out with 7 7/8". The BOP will be used as a 2000 psi system and will be tested daily.

APPROVAL SUBJECT TO  
GENERAL REQUIREMENTS AND  
SPECIAL STIPULATIONS

ATTACHED

IN ABOVE SPACE DESCRIBE PROPOSED PROGRAM: If proposal is to deepen, give data on present productive zone and proposed new productive zone. If proposal is to drill or deepen directionally, give pertinent data on subsurface locations and measured and true vertical depths. Give blowout preventer program, if any.

## 24.

SIGNED

*Armando A. Lopez*

TITLE

Agent for:  
Seely Oil Co.

DATE

Feb. 4, 1998

(This space for Federal or State office use)

PERMIT NO.

APPROVAL DATE

Application approval does not warrant or certify that the applicant holds legal or equitable title to those rights in the subject lease which would entitle the applicant to conduct operations thereon.

CONDITIONS OF APPROVAL, IF ANY:

(ORIG. SCD.) ARMANDO A. LOPEZ

APPROVED BY

TITLE

*Armando A. Lopez*

DW MINERALS

DATE

2-26-98

\*See Instructions On Reverse Side

Title 18 U.S.C. Section 1001, makes it a crime for any person knowingly and willfully to make to any department or agency of the United States any false, fictitious or fraudulent statements or representations as to any matter within its jurisdiction.

DISTRICT I  
P.O. Box 1980, Hobbs, NM 88240

State of New Mexico  
Energy, Minerals and Natural Resources Department

Form C-102  
Revised February 10, 1994  
Instruction on back  
Submit to Appropriate District Office  
State Lease - 4 Copies  
Fee Lease - 3 Copies

DISTRICT II  
P.O. Drawer DD, Artesia, NM 88210

OIL CONSERVATION DIVISION

DISTRICT III  
1000 Rio Brazos Rd., Aztec, NM 87410

P.O. Box 2088  
Santa Fe, New Mexico 87504-2088

☐ AMENDED REPORT

WELL LOCATION AND ACREAGE DEDICATION PLAT

API Number <b>30-025-34325</b>	Pool Code <b>19950</b>	Pool Name <b>E-K Yates, Seven Rivers, Queen</b>
Property Code <b>22434</b>	Property Name <b>EK QUEEN UNIT TRACT 2</b>	Well Number <b>29</b>
OGRID No. <b>20497</b>	Operator Name <b>SEELY OIL CO.</b>	Elevation <b>4008'</b>

Surface Location

UL or lot No.	Section	Township	Range	Lot Idn	Feet from the	North/South line	Feet from the	East/West line	County
H	13	18 S	33 E		1980	NORTH	660	EAST	LEA

Bottom Hole Location If Different From Surface

UL or lot No.	Section	Township	Range	Lot Idn	Feet from the	North/South line	Feet from the	East/West line	County
Dedicated Acres <b>40</b>	Joint or Infill	Consolidation Code	Order No.						

NO ALLOWABLE WILL BE ASSIGNED TO THIS COMPLETION UNTIL ALL INTERESTS HAVE BEEN CONSOLIDATED  
OR A NON-STANDARD UNIT HAS BEEN APPROVED BY THE DIVISION

	<b>OPERATOR CERTIFICATION</b>  I hereby certify the the information contained herein is true and complete to the best of my knowledge and belief.  <u>George R. Smith</u> Signature <b>George R. Smith, agent for:</b> Printed Name <b>Seely Oil Co.</b> Title <b>February 4, 1998</b> Date	
	<b>SURVEYOR CERTIFICATION</b>  I hereby certify that the well location shown on this plat was plotted from field notes of actual surveys made by me or under my supervision, and that the same is true and correct to the best of my belief.  <b>January 8, 1998</b> Date Surveyed  Signature & Seal of Professional Surveyor  <b>W.O. No. 80060</b> Certificate No. <b>Gary L. Jones 7977</b>	
	<b>LC-063645</b> <b>Seely Oil Co. (Unit Operator)</b>	<b>BASIN SURVEYS</b>

APPLICATION FOR DRILLING  
SEELY OIL CO.  
E-K Queen Unit Tract 2, Well No. 9  
1980' FNL & 660' FEL, Sec. 13-T18S-R33E  
Lea County, New Mexico  
Lease No.: LC-063645  
(Development Well)

In conjunction with Form 3160-3, Application for Permit to Drill subject well, Seely Oil Co. submits the following items of pertinent information in accordance with BLM requirements:

1. The geologic surface formation is recent Permian with quaternary alluvium and other surficial deposits.
2. The estimated tops of geologic markers are as follows:

Rustler	1,730'
Base of Salt	3,130'
Yates	3,260'
Queen	4,380'
T. D.	4,700'
3. The estimated depths at which water, oil or gas formations are anticipated to be encountered:

Water: Surface water in the Triassic between 80' - 230'.

Oil: Possible in the Yates below 3320', Seven Rivers below 3,590', Queen below 4,380'

Gas: None expected.
4. Proposed Casing Program: See Form 3160-3.
5. Proposed Control Equipment: See Form 3160-3 and Exhibit "E".
6. Mud Program: See Form 3160-3.
7. Auxiliary Equipment: Blowout Preventer, gas detector, Kelly cock, pit level monitor, flow sensors and stabbing valve.
8. Testing, Logging, and Coring Program:

Drill Stem Tests:	None unless warranted.	
Logging:	T.D. to 1750':	G/R-Density Neutron, Dual Induction Log
	1750'. to surface;	G/R, neutron
Coring:	None planned.	
9. No abnormal pressures or temperatures are anticipated. In the event abnormal pressures are encountered the proposed mud program will be modified to increase the mud weight. Estimated BHP = 1880 psi (evac. hole) with temperature of 107°.
10. H<sub>2</sub>S: None expected. None in previously drilled wells.
11. Anticipated starting date: March 1, 1998.  
Anticipated completion of drilling operations: Approx. 3 weeks.



# B O P & CHOKE MANIFOLD

10"/900 Cameron SS Space Saver  
 3000# Working Pressure  
 2000# Working Pressure Choke Manifold

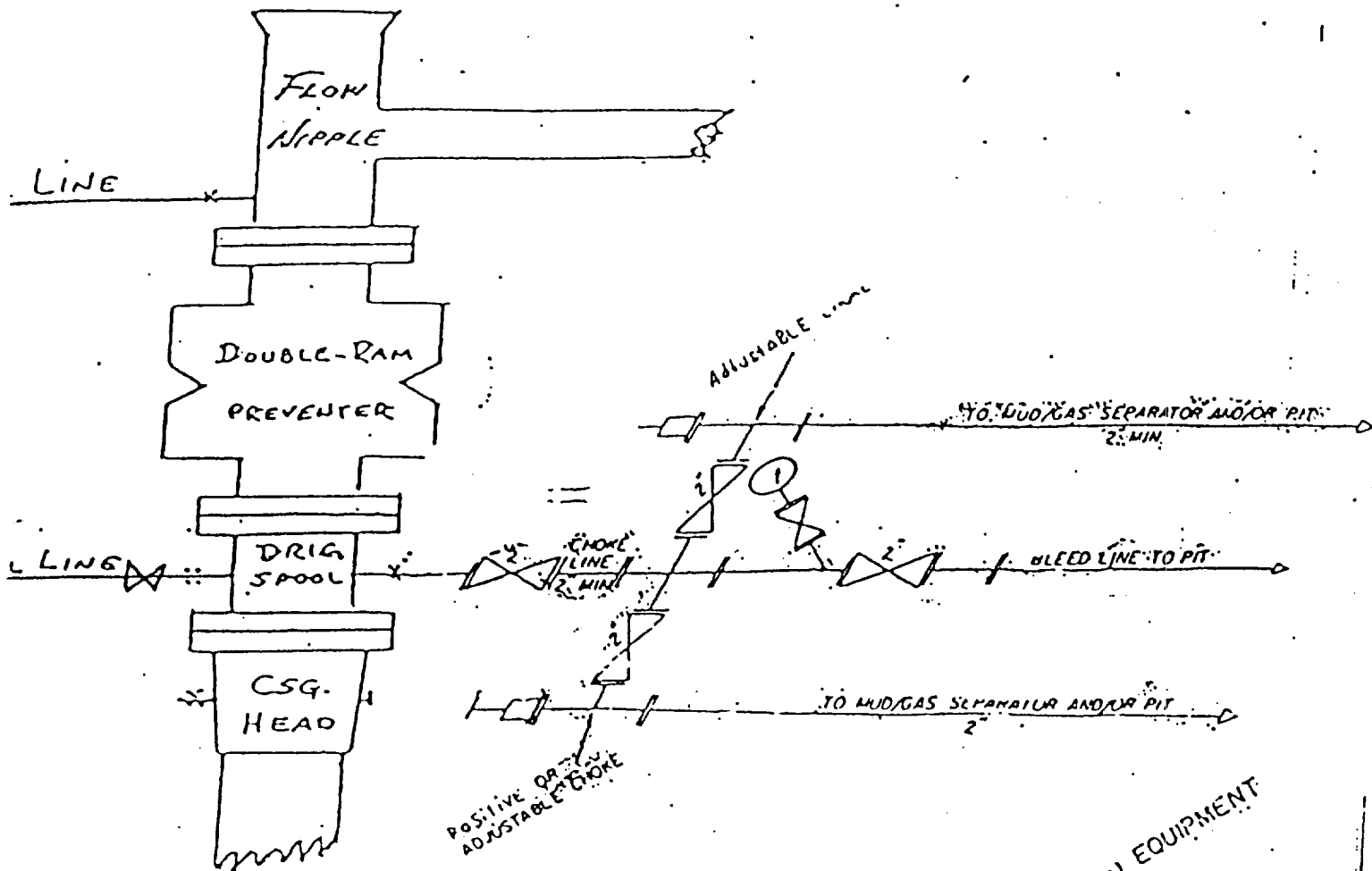


EXHIBIT "E"  
 SEELY OIL CO.  
 E-K Queen Unit Tract 2, Well No. 9  
 BOP Specifications