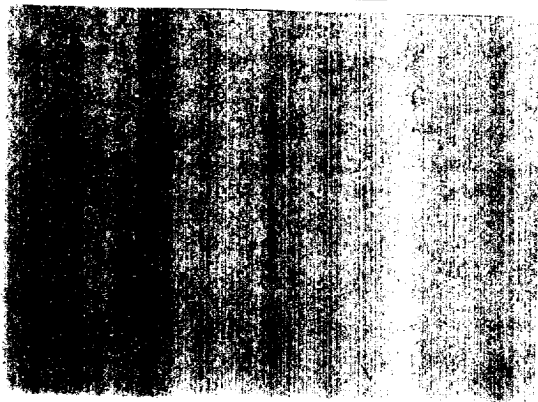


SITE FACILITY DIAGRAM



To oil sales trucked

LOCATION OF SITE SECURITY PLAN

Mewbourne Oil Company
Rt. 3 Box 116-8
Woodward, Oklahoma 73801

To water
Disposal, trucked

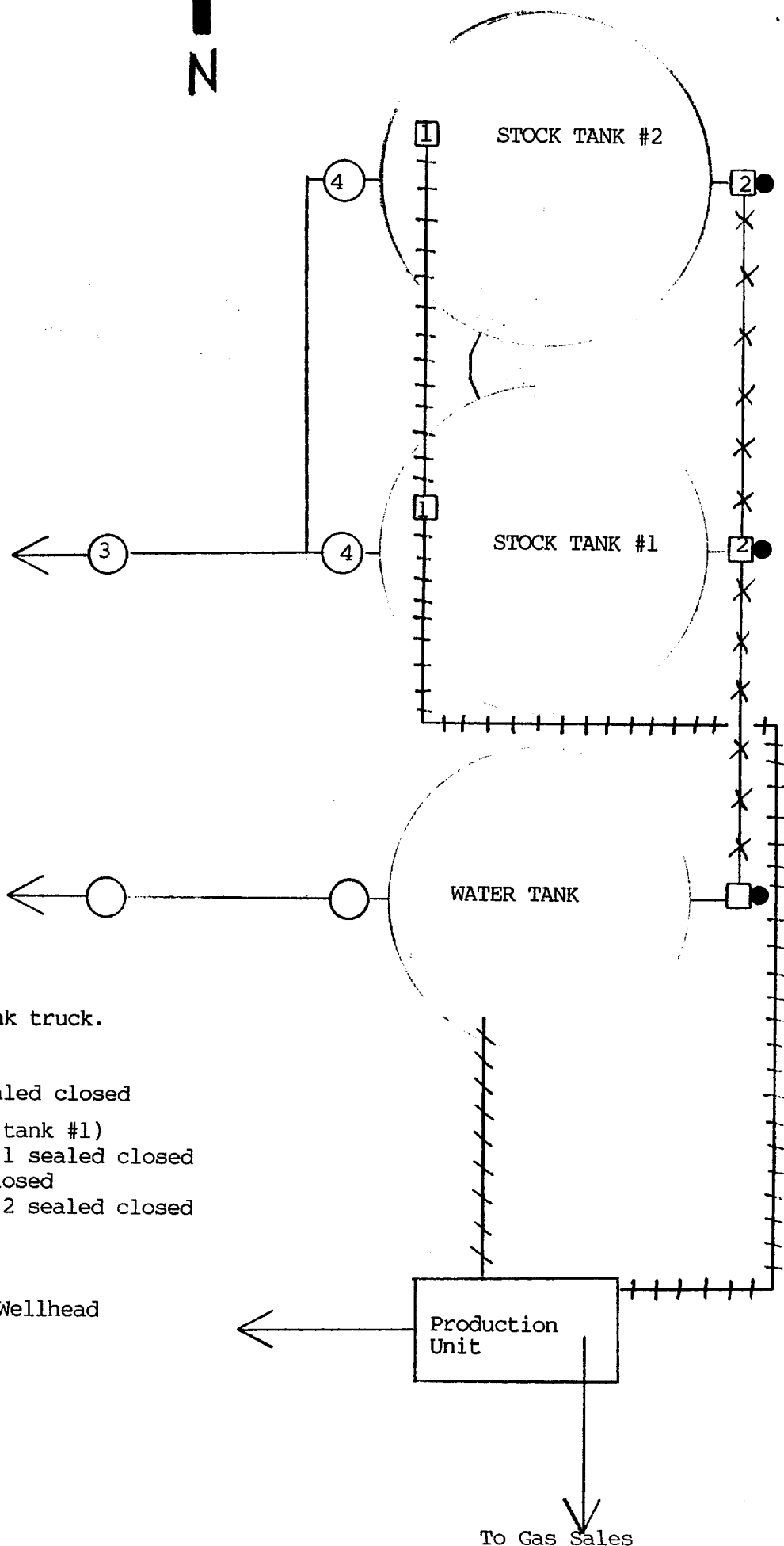
PRODUCTION SYSTEM - OPEN

1. Oil sales by tank gauge to tank truck.
2. Seal requirements:
 - A. Production Phase
 1. All valves 2,3 & 4 sealed closed
 - B. Sales Phase: (from stock tank #1)
 1. Valve 1 on stock tank 1 sealed closed
 2. All valves 2 sealed closed
 3. Valve 4 on stock tank 2 sealed closed

LEGEND

Oil Dump Line +++++
Water Dump Line /////
Circulating Line *-*-*-*
Sealing Valves □ ○
Bullplugs ●

To Wellhead



To Gas Sales

Sb/Sb

177