

District I  
PO Box 1980, Hobbs, NM 88241-1980

District II  
811 South First, Artesia, NM 88210

District III  
1000 Rio Brazos Rd., Aztec, NM 87410

District IV  
2040 South Pacheco, Santa Fe, NM 87505

State of New Mexico  
Energy, Minerals & Natural Resources Department

OIL CONSERVATION DIVISION  
2040 South Pacheco  
Santa Fe, NM 87505

Form C-101

Revised October 18, 1994

Instructions on back

Submit to Appropriate District Office

State Lease - 6 Copies

Fee Lease - 5 Copies

☐ AMENDED REPORT

APPLICATION FOR PERMIT TO DRILL, RE-ENTER, DEEPEN, PLUGBACK, OR ADD A ZONE

Operator Name and Address Mewbourne Oil Company PO Box 5270, Hobbs, New Mexico 88240 (505)393-5905		OGRID Number 14744
Property Code 23638		API Number 30-025-34496
Property Name LaRica "32" State		Well No. 2

Surface Location

UL or lot no.	Section	Township	Range	Lot Idn	Feet from the	North/South line	Feet from the	East/West Line	County
g	32	18S	34E		2310	North	1980	East	Lea

Proposed Bottom Hole Location If Different From Surface

UL or lot no.	Section	Township	Range	Lot Idn	Feet from the	North/South line	Feet from the	East/West Line	County
Proposed Pool 1 Morrow LaRica, Morrow, West					Proposed Pool 2				

Work Type Code N	Well Type Code G	Cable/Rotary R	Lease Type Code S	Ground Level Elevation 3906
Multiple No	Proposed Depth 13700	Formation Morrow	Contractor Unkown	Spud Date

Proposed Casing and Cement Program

Hole Size	Casing Size	Casing weight/foot	Setting Depth	Sacks of Cement	Estimated TOC
17 1/2"	13 3/8"	48#	400	420 sacks	Circulate to Surf.
12 1/4"	8 5/8"	32#	4000	1500sacks	Tei Back to Surf.
7 7/8"	5 1/2"	17 & 20#	13700	1600sacks	6500' form Surf.

Describe the proposed program. If this application is to DEEPEN or PLUG BACK give the data on the present productive zone and proposed new productive zone. Describe the blowout prevention program, if any. Use additional sheets if necessary.

BOP Program: Shcaffer LWS or equivalent (Double-Ram Hydraulic) 900 series with Hydriil 900 series from intermediate casing to total depth.

Rotating Head, PVT System, Flow Monitors, and Mud Gas Separator from the top of the Wolfcamp to TD.

Mud Program: 0' to 400' Fresh water and spud mud, LCM as needed

400' to 4000' Brine water caustic to control pH, LCM as needed

4000' to 12,000' Cut Brine, Caustic to control pH, LCM to control loss

Note: If pressure is encountered in Wolfcamp mud up may occure sooner.

12,000, to TD Brine Water, Caustic to control Ph, Pre-Hydrated Gel, Starch to control WL (10cc<)

I hereby certify that the information given above is true and complete to the best of my knowledge and belief.

Signature: *Steve Matthews*

Printed name: Steve Matthews

Title: Drilling Superintendent

OIL CONSERVATION DIVISION

Approved By:

Title:

Approval Date: SEP 02 1998

Expiration Date:

Permit Expires 1 Year After Approval  
Date Unless Drilling Underway

DISTRICT I  
P.O. Box 1980, Hobbs, NM 88241-1980

State of New Mexico  
Energy, Minerals and Natural Resources Department

Form C-102  
Revised February 10, 1994  
Submit to Appropriate District Office  
State Lease - 4 Copies  
Fee Lease - 3 Copies

DISTRICT II  
P.O. Drawer DD, Artesia, NM 88211-0719

DISTRICT III  
1000 Rio Brazos Rd., Aztec, NM 87410

DISTRICT IV  
P.O. BOX 2088, SANTA FE, N.M. 87504-2088

OIL CONSERVATION DIVISION

P.O. Box 2088  
Santa Fe, New Mexico 87504-2088

☐ AMENDED REPORT

WELL LOCATION AND ACREAGE DEDICATION PLAT

API Number 30-025-34496	Pool Code 79830	Pool Name LaRica; Morrow, West (Gas)
Property Code 23638	Property Name LA RICA 32 STATE	Well Number 2
OGRID No. 14744	Operator Name MEWBOURNE OIL COMPANY	Elevation 3906

Surface Location

UL or lot No. G	Section 32	Township 18 S	Range 34 E	Lot Idn	Feet from the 2310	North/South line NORTH	Feet from the 1980	East/West line EAST	County LEA
--------------------	---------------	------------------	---------------	---------	-----------------------	---------------------------	-----------------------	------------------------	---------------

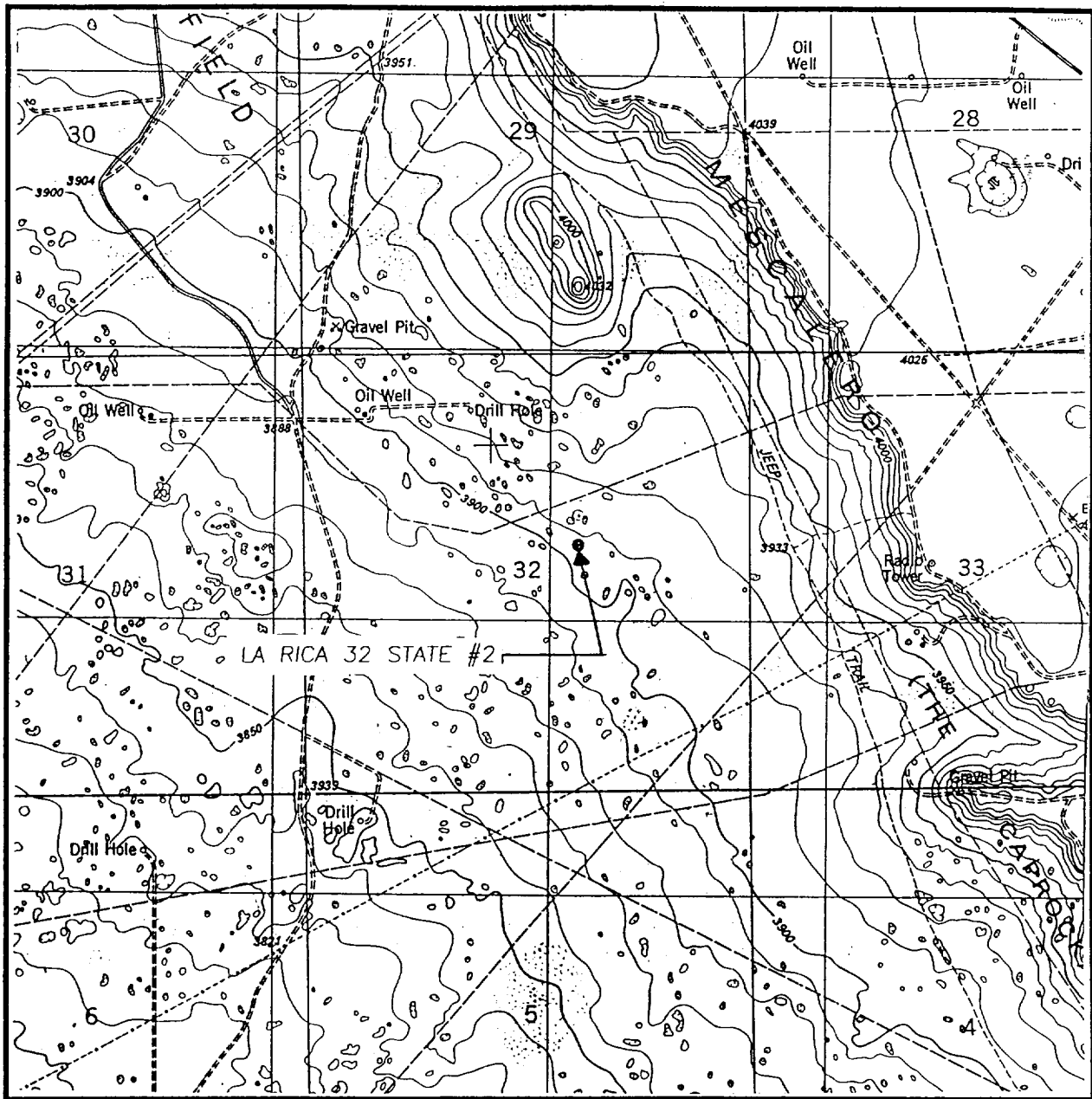
Bottom Hole Location If Different From Surface

UL or lot No.	Section	Township	Range	Lot Idn	Feet from the	North/South line	Feet from the	East/West line	County
Dedicated Acres 320	Joint or Infill	Consolidation Code	Order No.						

NO ALLOWABLE WILL BE ASSIGNED TO THIS COMPLETION UNTIL ALL INTERESTS HAVE BEEN CONSOLIDATED  
OR A NON-STANDARD UNIT HAS BEEN APPROVED BY THE DIVISION

	<b>OPERATOR CERTIFICATION</b>  I hereby certify the the information contained herein is true and complete to the best of my knowledge and belief.  Signature <u>Steve Matthews</u> Printed Name <u>Steve Matthews</u> Title <u>Dir. Super.</u> Date <u>09-02-98</u>
	<b>SURVEYOR CERTIFICATION</b>  I hereby certify that the well location shown on this plat was plotted from field notes of actual surveys made by me or under my supervision and that the same is true and correct to the best of my belief.  SEPTEMBER 1, 1998 Date Surveyed Signature & Seal of Professional Surveyor  Certificate No. <u>RONALD J. EDSON</u> 3239 <u>GARY EDSON</u> 12641 <u>MAGON McDONALD</u> 12185

# LOCATION VERIFICATION MAP



SCALE: 1" = 2000'

CONTOUR INTERVAL:  
IRONHOUSE WELL - 10'

SEC. 32 TWP. 18-S RGE. 34-E

SURVEY N.M.P.M.

COUNTY LEA

DESCRIPTION 2310' FNL & 1980' FEL

ELEVATION 3906

OPERATOR MEWBOURNE OIL COMPANY

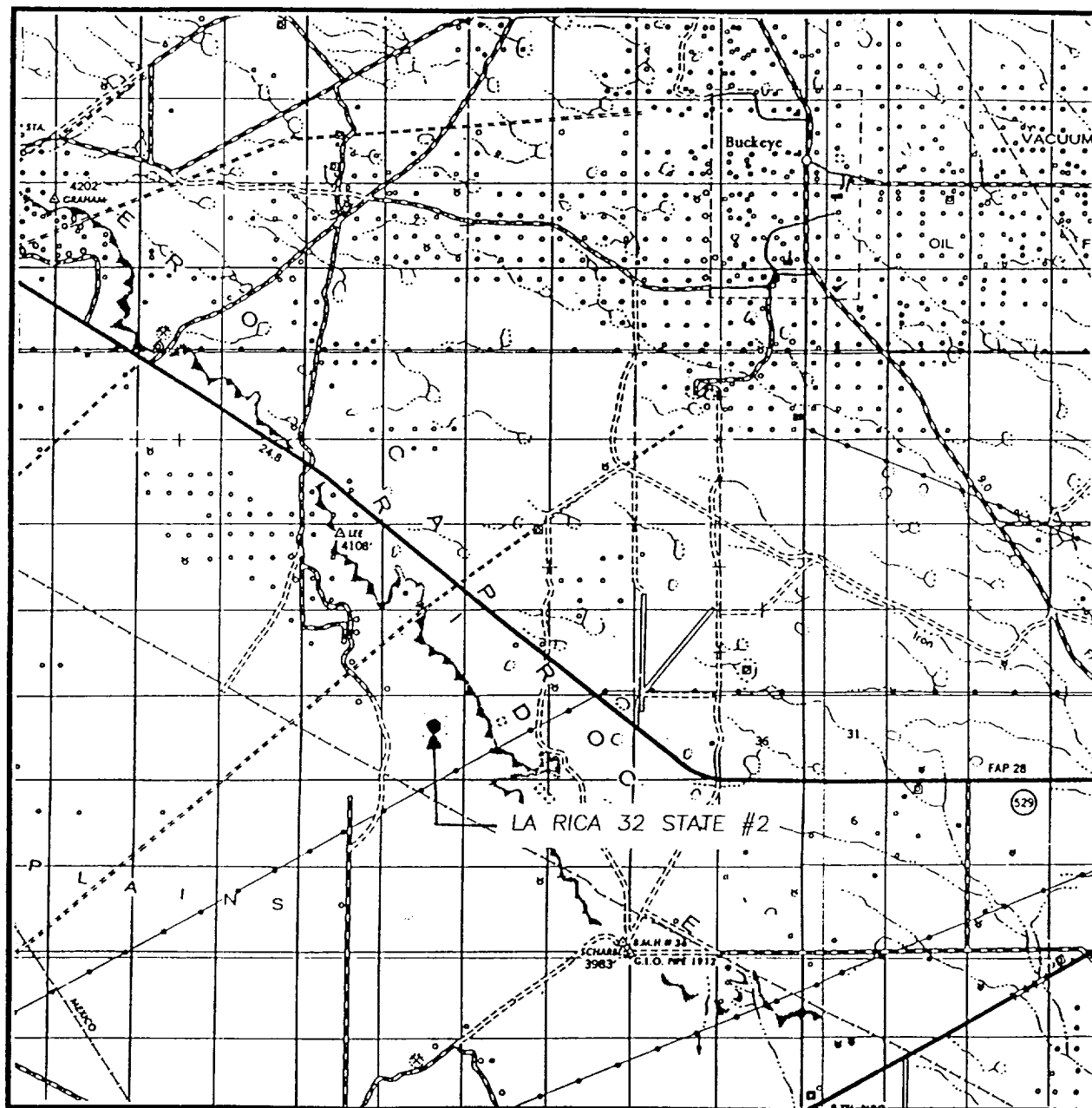
LEASE LA RICA 32 STATE

U.S.G.S. TOPOGRAPHIC MAP

IRONHOUSE WELL, N.M.

**JOHN WEST ENGINEERING**  
**HOBBS, NEW MEXICO**  
**(505) 393-3117**

# VICINITY MAP



SCALE: 1" = 2 MILES

SEC. 32 TWP. 18-S RGE. 34-E

SURVEY N.M.P.M.

COUNTY LEA

DESCRIPTION 2310' FNL & 1980' FEL

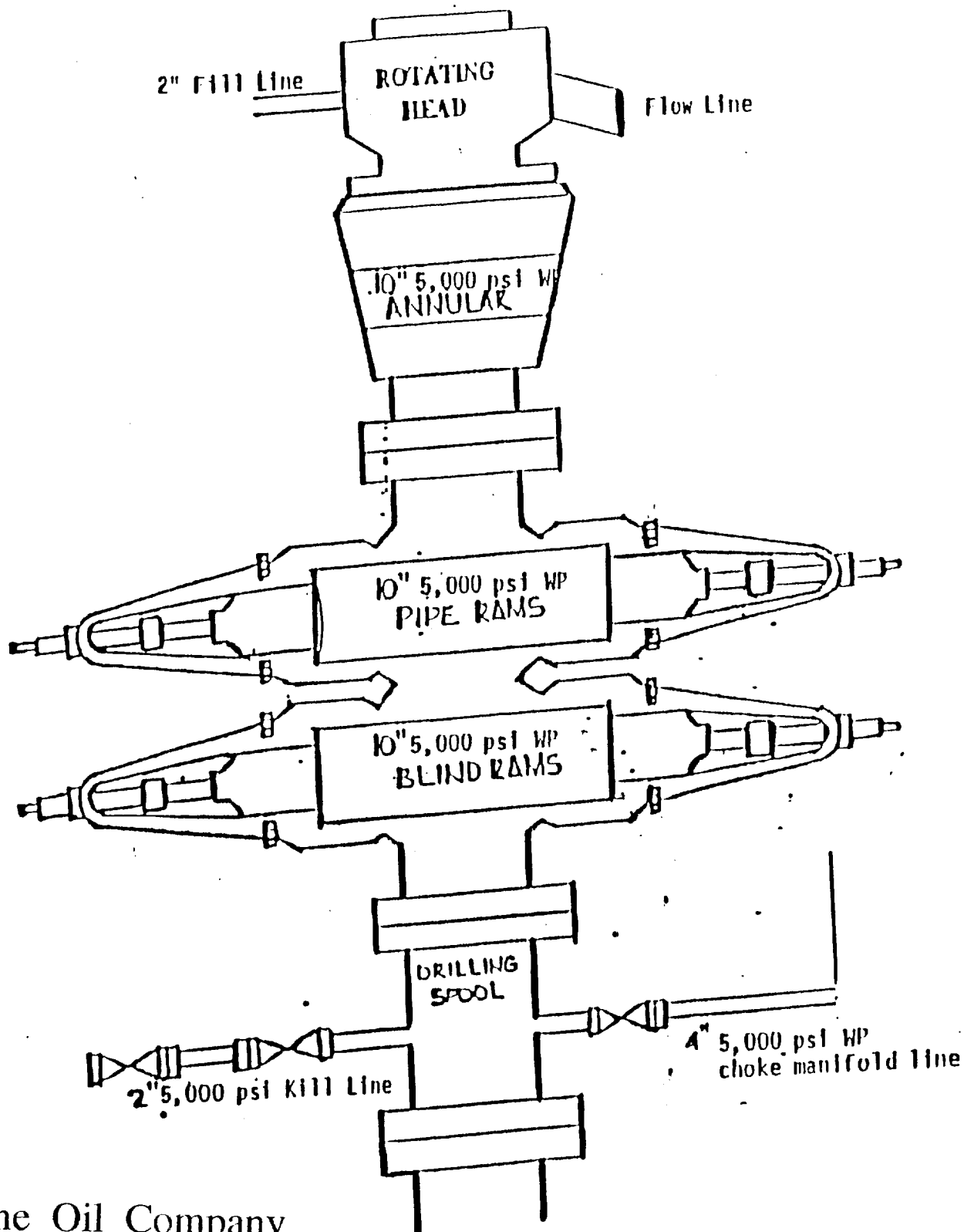
ELEVATION 3906

OPERATOR MEWBOURNE OIL COMPANY

LEASE LA RICA 32 STATE

**JOHN WEST ENGINEERING**  
**HOBBS, NEW MEXICO**  
**(505) 393-3117**

BOP SCHEMATIC  
PRODUCTION HOLE



Mewbourne Oil Company  
LaRica "32" State #2  
2310'  
1980' FNL & 1980' FEL  
Sec. 32 - T18S - R34E  
Lea County, New Mexico