

District I
PO Box 1980, Hobbs, NM 88241-1980
District II
811 S. 1st Street, Artesia, NM 88210-2834
District III
1000 Rio Brazos Rd., Aztec, NM 87410
District IV
2040 South Pacheco, Santa Fe, NM 87505

State of New Mexico
Energy, Minerals & Natural Resources Department

OIL CONSERVATION DIVISION
2040 South Pacheco
Santa Fe, NM 87505

Form C-101
Revised October 18, 1994
Instructions on back
Submit to Appropriate District Office
State Lease - 6 Copies
Fee Lease - 5 Copies

☐ AMENDED REPORT

APPLICATION FOR PERMIT TO DRILL, RE-ENTER, DEEPEN, PLUGBACK, OR ADD A ZONE

1 Operator name and Address ARCO PERMIAN P.O. BOX 1610		2 OGRID Number 000990
		3 API Number 30-0 25-34547
4 Property Code 23938	5 Property Name CORBIN STATE	
		6 Well No. 1

7 Surface Location									
UL or lot no.	Section	Township	Range	Lot. Idn	Feet from the	North/South Line	Feet from the	East/West line	County
F	24	18S	33E		1980	NORTH	2310	WEST	LEA

8 Proposed Bottom Hole Location If Different From Surface									
UL or lot no.	Section	Township	Range	Lot. Idn	Feet from the	North/South Line	Feet from the	East/West line	County
9 Proposed Pool 1 E K DELAWARE (DELAWARE)					10 Proposed Pool 2				

11 Work Type Code N	12 Well Type Code O	13 Cable/Rotary R	14 Lease Type Code S	15 Ground Level Elevation 3903
16 Multiple NO	17 Proposed Depth 5600'	18 Formation DELAWARE	19 Contractor CAPSTAR	20 Spud Date 1/98 1/00

21 Proposed Casing and Cement Program					
Hole Size	Casing Size	Casing weight/foot	Setting Depth	Sacks of Cement	Estimated TOC
11	8-5/8	24	400	260	CIRC.
7-7/8	5-1/2	15.5	5600'	800	CIRC.

22 Describe the proposed program. If this application is to DEEPEN or PLUG BACK give the data on the present productive zone and proposed new productive zone. Describe the blowout prevention program, if any. Use additional sheets if necessary

Subject well planned as a 5600' straight hole.
3000 psi BOPE will be used from 400' to TD.

** This APD was originally approved in December, 1998. Due to its recent expiration, this APD has been filed.

23 I hereby certify that the information given above is true and complete to the best of my knowledge and belief.

Signature: *Laurie Cherry*
Printed name: Laurie Cherry
Title: 1/12/00

OIL CONSERVATION DIVISION	
Approved by:	
Title:	
Approval Date: JAN 21 2000	Expiration Date:

DISTRICT I
P.O. Box 1980, Hobbs, NM 88241-1980

State of New Mexico
Energy, Minerals and Natural Resources Department

Form C-102
Revised February 10, 1994
Submit to Appropriate District Office
State Lease - 4 Copies
Fee Lease - 3 Copies

DISTRICT II
P.O. Drawer DD, Artesia, NM 88211-0719

DISTRICT III
1000 Rio Brazos Rd., Aztec, NM 87410

DISTRICT IV
P.O. Box 2088, Santa Fe, N.M. 87504-2088

OIL CONSERVATION DIVISION

P.O. Box 2088
Santa Fe, New Mexico 87504-2088

☐ AMENDED REPORT

WELL LOCATION AND ACREAGE DEDICATION PLAT

API Number 30-025-34547	Pool Code 216 SS	Pool Name EK DELAWARE (DELAWARE)
Property Code 23938	Property Name CORBIN STATE	Well Number 1
OGRID No. 000990	Operator Name ARCO PERMIAN	Elevation 3903

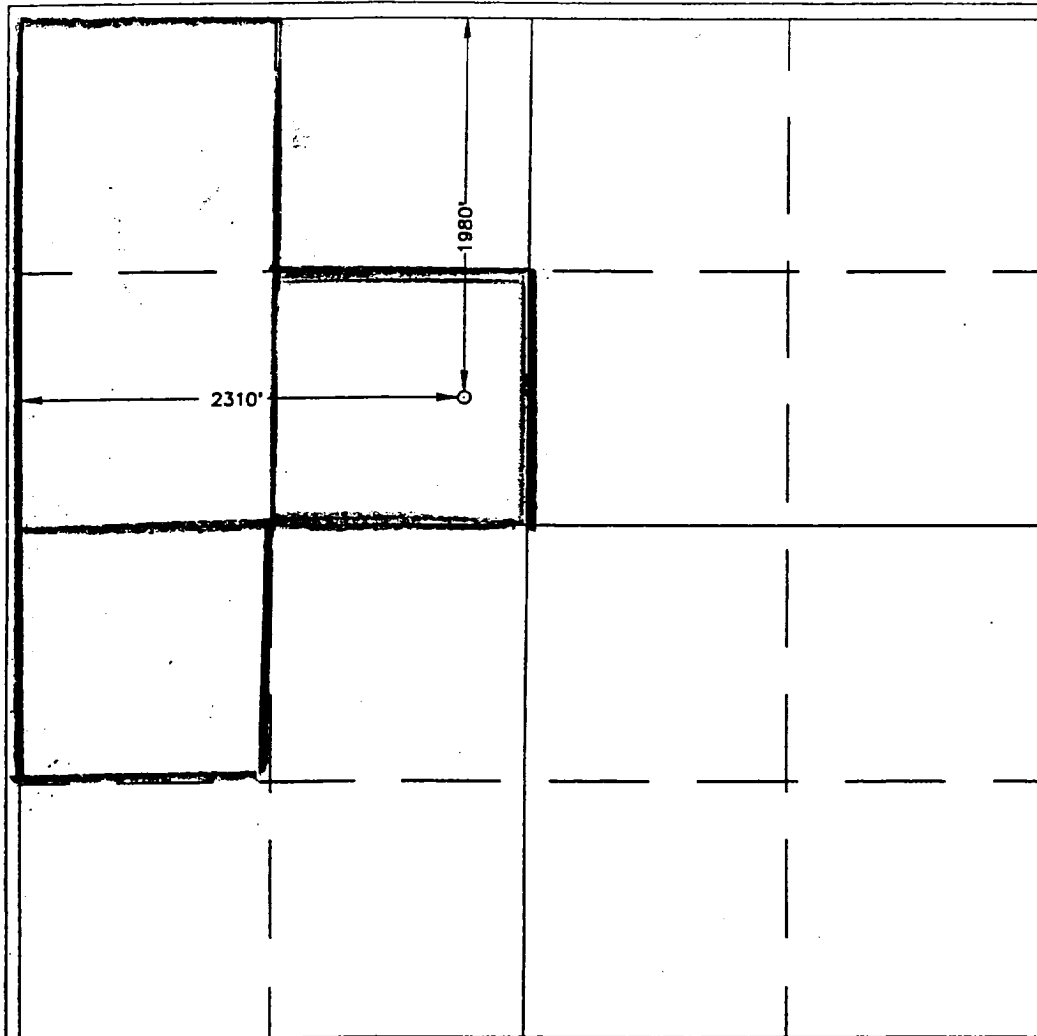
Surface Location

UL or lot No.	Section	Township	Range	Lot Idn	Feet from the	North/South line	Feet from the	East/West line	County
F	24	18 S	33 E		1980	NORTH	2310	WEST	LEA

Bottom Hole Location If Different From Surface

UL or lot No.	Section	Township	Range	Lot Idn	Feet from the	North/South line	Feet from the	East/West line	County
Dedicated Acres 40	Joint or Infill	Consolidation Code	Order No.						

NO ALLOWABLE WILL BE ASSIGNED TO THIS COMPLETION UNTIL ALL INTERESTS HAVE BEEN CONSOLIDATED
OR A NON-STANDARD UNIT HAS BEEN APPROVED BY THE DIVISION



OPERATOR CERTIFICATION

I hereby certify the the information
contained herein is true and complete to the
best of my knowledge and belief.

Elizabeth A. Casbeer
Signature

ELIZABETH A. CASBEER
Printed Name

REG/COMP. ANALYST
Title

12/9/98
Date

SURVEYOR CERTIFICATION

I hereby certify that the well location shown
on this plat was plotted from field notes of
actual surveys made by me or under my
supervision, and that the same is true and
correct to the best of my belief.

NOVEMBER 25, 1998

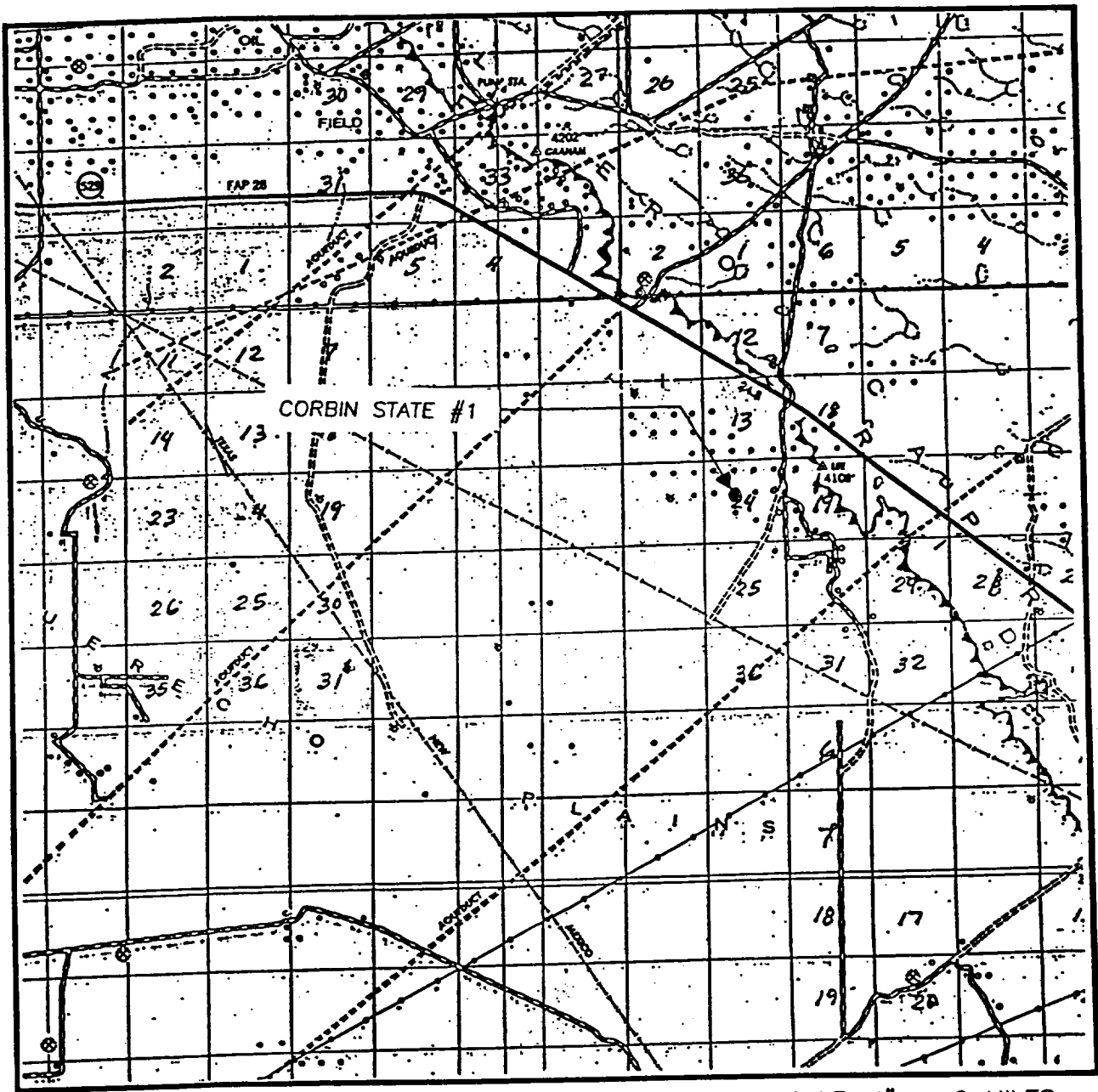
Date Surveyed **NOV 25 1998** DMCC

Signature of Professional Surveyor
Ronald E. Edson

RONALD E. EDSON
Professional Surveyor
12-02-98
12-11-1520

Certification No. **RONALD E. EDSON** 3239
CARL EDSON 12841
EDSON 12185

VICINITY MAP

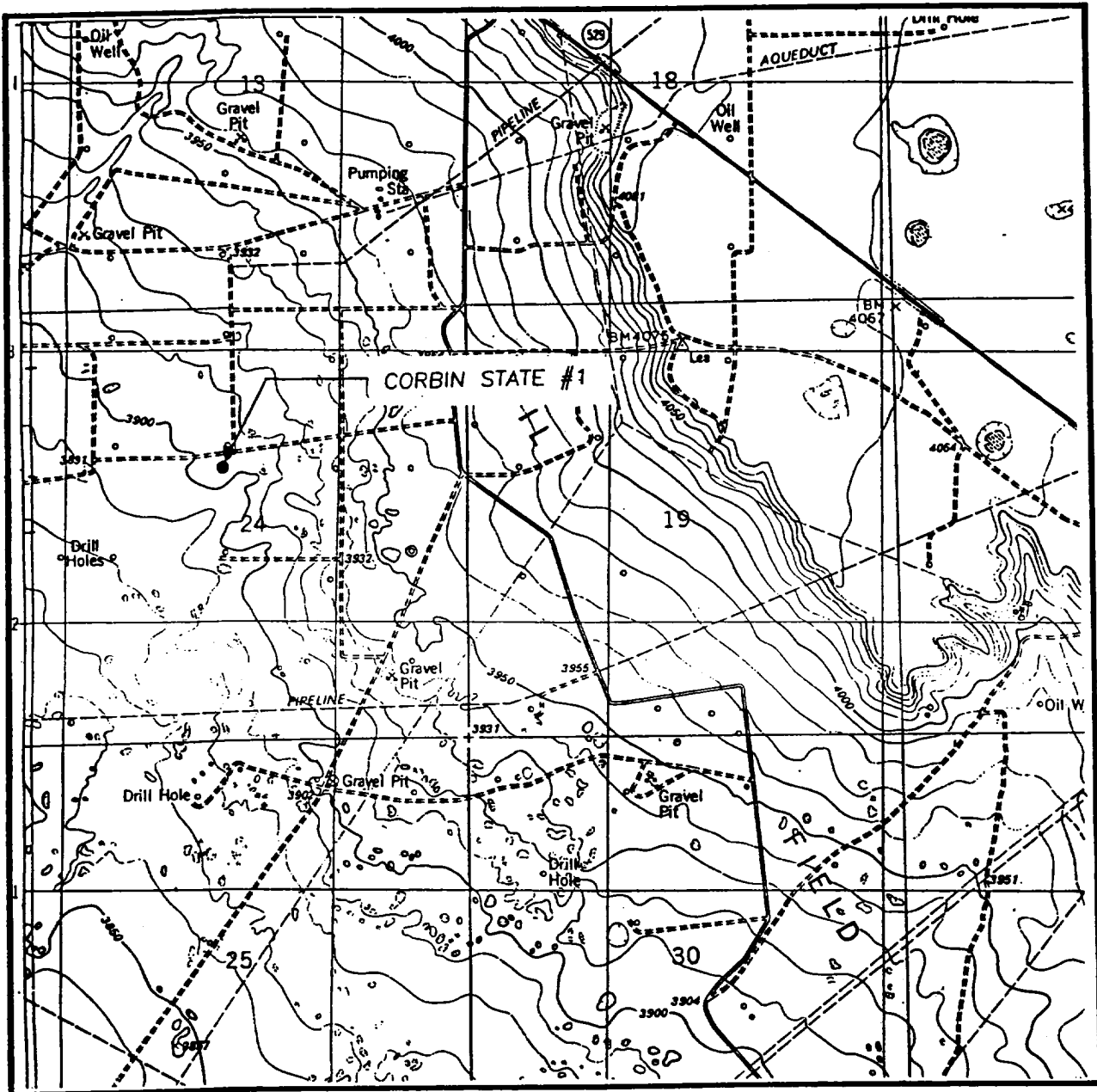


SCALE: 1" = 2 MILES

SEC. 24 TWP. 18-S RGE. 33-E
 SURVEY N.M.P.M.
 COUNTY LEA
 DESCRIPTION 1980' FNL & 2310' FWL
 ELEVATION 3903
 OPERATOR ARCO PERMIAN
 LEASE CORBIN STATE

JOHN WEST ENGINEERING
HOBBS, NEW MEXICO
(505) 393-3117

LOCATION VERIFICATION MAP



SCALE: 1" = 2000'

CONTOUR INTERVAL:
IRONHOUSE WELL - 10'

SEC. 24 TWP. 18-S RGE. 33-E

SURVEY N.M.P.M.

COUNTY LEA

DESCRIPTION 1980' FNL & 2310' FWL

ELEVATION 3903

OPERATOR ARCO PERMIAN

LEASE CORBIN STATE

U.S.G.S. TOPOGRAPHIC MAP
IRONHOUSE WELL, N.M.

JOHN WEST ENGINEERING
HOBBS, NEW MEXICO
(505) 393-3117