

State of New Mexico
Energy, Minerals & Natural Resources Department

OIL CONSERVATION DIVISION
2040 South Pacheco
Santa Fe, NM 87505

Form C-101
Revised October 18, 1999
Instructions on back
Submit to Appropriate District Office
State Lease - 6 Copies
Fee Lease - 5 Copies

District I
PO Box 1980, Hobbs, NM 88241-1980
District II
811 S. 1st Street, Artesia, NM 88210-2834
District III
1000 Rio Brazos Rd., Aztec, NM 87410
District IV
2040 South Pacheco, Santa Fe, NM 87505

☐ AMENDED REPORT

APPLICATION FOR PERMIT TO DRILL, RE-ENTER, DEEPEN, PLUGBACK, OR ADD A ZONE

¹ Operator name and Address ARCO PERMIAN P.O. BOX 1610 MIDLAND, TX 79702		² OGRID Number 000990
⁴ Property Code 23938	⁵ Property Name CORBIN STATE	³ API Number 30-025-34547
		⁶ Well No. 1

⁷ Surface Location

UL or lot no.	Section	Township	Range	Lot. Idn	Feet from the	North/South Line	Feet from the	East/West line	County
F	24	18S	33E		1980	NORTH	2310	WEST	LEA

⁸ Proposed Bottom Hole Location If Different From Surface

UL or lot no.	Section	Township	Range	Lot. Idn	Feet from the	North/South Line	Feet from the	East/West line	County
⁹ Proposed Pool 1 E K DELAWARE (DELAWARE)					¹⁰ Proposed Pool 2				

¹¹ Work Type Code N	¹² Well Type Code O	¹³ Cable/Rotary R	¹⁴ Lease Type Code S	¹⁵ Ground Level Elevation 3903
¹⁶ Multiple NO	¹⁷ Proposed Depth 5600'	¹⁸ Formation DELAWARE	¹⁹ Contractor CAPSTAR	²⁰ Spud Date 1/98

²¹ Proposed Casing and Cement Program

Hole Size	Casing Size	Casing weight/foot	Setting Depth	Sacks of Cement	Estimated TOC
11	8-5/8	24	400	260	CIRC
7-7/8	5-1/2	15.5	5600'	800	CIRC

²² Describe the proposed program. If this application is to DEEPEN or PLUG BACK give the data on the present productive zone and proposed new productive zone. Describe the blowout prevention program, if any. Use additional sheets if necessary.

Subject well planned as a 5600' straight hole.
3000 psi BOPE will be used from 400' to TD.

Valid for 1 Year From Approval
Date Unless Drilling Underway

²³ I hereby certify that the information given above is true and complete to the best of my knowledge and belief.

Signature:

Elizabeth A. Casbeer

Printed name: ELIZABETH A. CASBEER

Title: 12/8/98

OIL CONSERVATION DIVISION

Approved by:

WILLIAMS

Title:

Approval Date:

Expiration Date:

See 701 approved 10/12/98
MIP

DISTRICT I
P.O. Box 1980, Hobbs, NM 88241-1980

State of New Mexico
Energy, Minerals and Natural Resources Department

Form C-102
Revised February 10, 1994
Submit to Appropriate District Office
State Lease - 4 Copies
Fee Lease - 3 Copies

DISTRICT II
P.O. Drawer DD, Artesia, NM 88211-0719

DISTRICT III
1000 Rio Brazos Rd., Aztec, NM 87410

DISTRICT IV
P.O. BOX 2088, SANTA FE, N.M. 87504-2088

OIL CONSERVATION DIVISION

P.O. Box 2088
Santa Fe, New Mexico 87504-2088

☐ AMENDED REPORT

WELL LOCATION AND ACREAGE DEDICATION PLAT

API Number 30-025-34547	Pool Code 21655	Pool Name EK DELAWARE (DELAWARE)
Property Code 23938	Property Name CORBIN STATE	Well Number 1
OGRID No. 000990	Operator Name ARCO PERMIAN	Elevation 3903

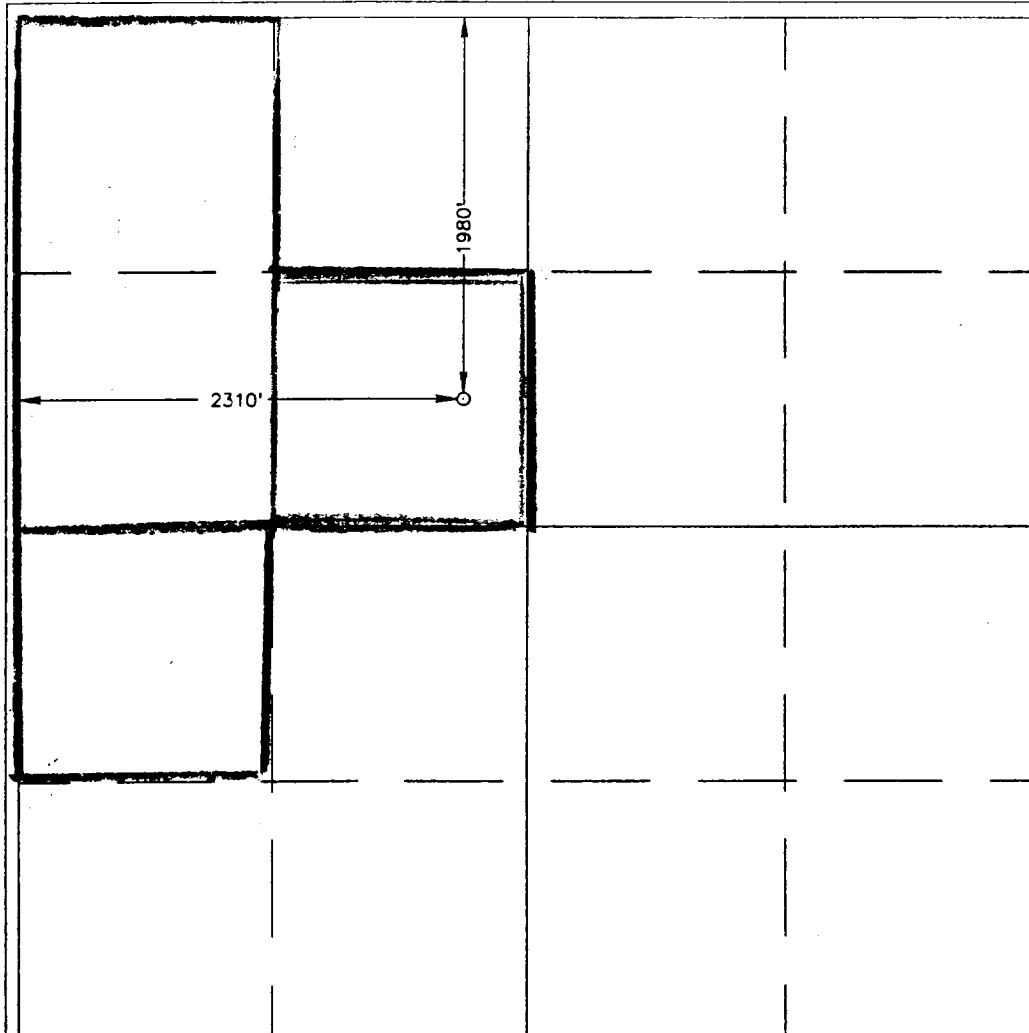
Surface Location

UL or lot No. F	Section 24	Township 18 S	Range 33 E	Lot Idn	Feet from the 1980	North/South line NORTH	Feet from the 2310	East/West line WEST	County LEA
--------------------	---------------	------------------	---------------	---------	-----------------------	---------------------------	-----------------------	------------------------	---------------

Bottom Hole Location If Different From Surface

UL or lot No.	Section	Township	Range	Lot Idn	Feet from the	North/South line	Feet from the	East/West line	County
Dedicated Acres 40	Joint or Infill	Consolidation Code	Order No.						

NO ALLOWABLE WILL BE ASSIGNED TO THIS COMPLETION UNTIL ALL INTERESTS HAVE BEEN CONSOLIDATED
OR A NON-STANDARD UNIT HAS BEEN APPROVED BY THE DIVISION



OPERATOR CERTIFICATION	
I hereby certify the the information contained herein is true and complete to the best of my knowledge and belief.	
Signature <i>Elizabeth A. Casbeer</i>	
Printed Name ELIZABETH A. CASBEER	
Title REG/COMP. ANALYST	
Date 12/9/98	
SURVEYOR CERTIFICATION	
I hereby certify that the well location shown on this plat was plotted from field notes of actual surveys made by me or under my supervision, and that the same is true and correct to the best of my belief.	
NOVEMBER 25, 1998	
Date Surveyed Signature & Seal of Professional Surveyor Professional Surveyor RONALD B. EDSON 12-02-98 08-11-1520	
DMCC	
Certificate No. RONALD B. EDSON 3239 CAPT. EDSON 12641 EDSON, R. DONALD 12185	

This is a detailed topographic map of a region in Alaska, overlaid with a grid of 36 numbered sections. The map includes various geographical features and labels:

- Grid Sections:** The map is divided into 36 numbered sections, arranged in a grid. The numbers are: 1, 2, 3, 4, 5, 6, 7, 8, 9, 10, 11, 12, 13, 14, 15, 16, 17, 18, 19, 20, 21, 22, 23, 24, 25, 26, 27, 28, 29, 30, 31, 32, 33, 34, 35, 36.
- Geographical Features:**
 - CORBIN STATE #1:** A large area labeled in the center.
 - FAP 28:** A label in the upper left section.
 - FIELD:** A label in the upper left section.
 - PUMP STA:** A label in the upper center section.
 - 4202 S. CLANAM:** A label in the upper center section.
 - A LUE 4100:** A label in the lower right section.
 - L A I N S:** A label in the lower center section.
- Lines and Boundaries:**
 - Dashed Lines:** Several dashed lines are drawn across the map, including one that runs diagonally from the upper left to the lower right.
 - Dotted Lines:** Several dotted lines are drawn across the map, including one that runs diagonally from the upper left to the lower right.
 - Solid Lines:** Several solid lines are drawn across the map, including one that runs diagonally from the upper left to the lower right.
- Other Labels:**
 - 528:** A label in the upper left section.
 - 35E:** A label in the lower left section.
 - 35:** A label in the lower left section.
 - 36:** A label in the lower left section.
 - 31:** A label in the lower center section.
 - 32:** A label in the lower right section.
 - 33:** A label in the lower right section.
 - 34:** A label in the lower right section.
 - 35:** A label in the lower right section.
 - 36:** A label in the lower right section.

SEC. 24 TWP. 18-S RGE. 33-E

SURVEY N.M.P.M.

COUNTY _____ LEA _____

DESCRIPTION 1980' FNL & 2310' FWL

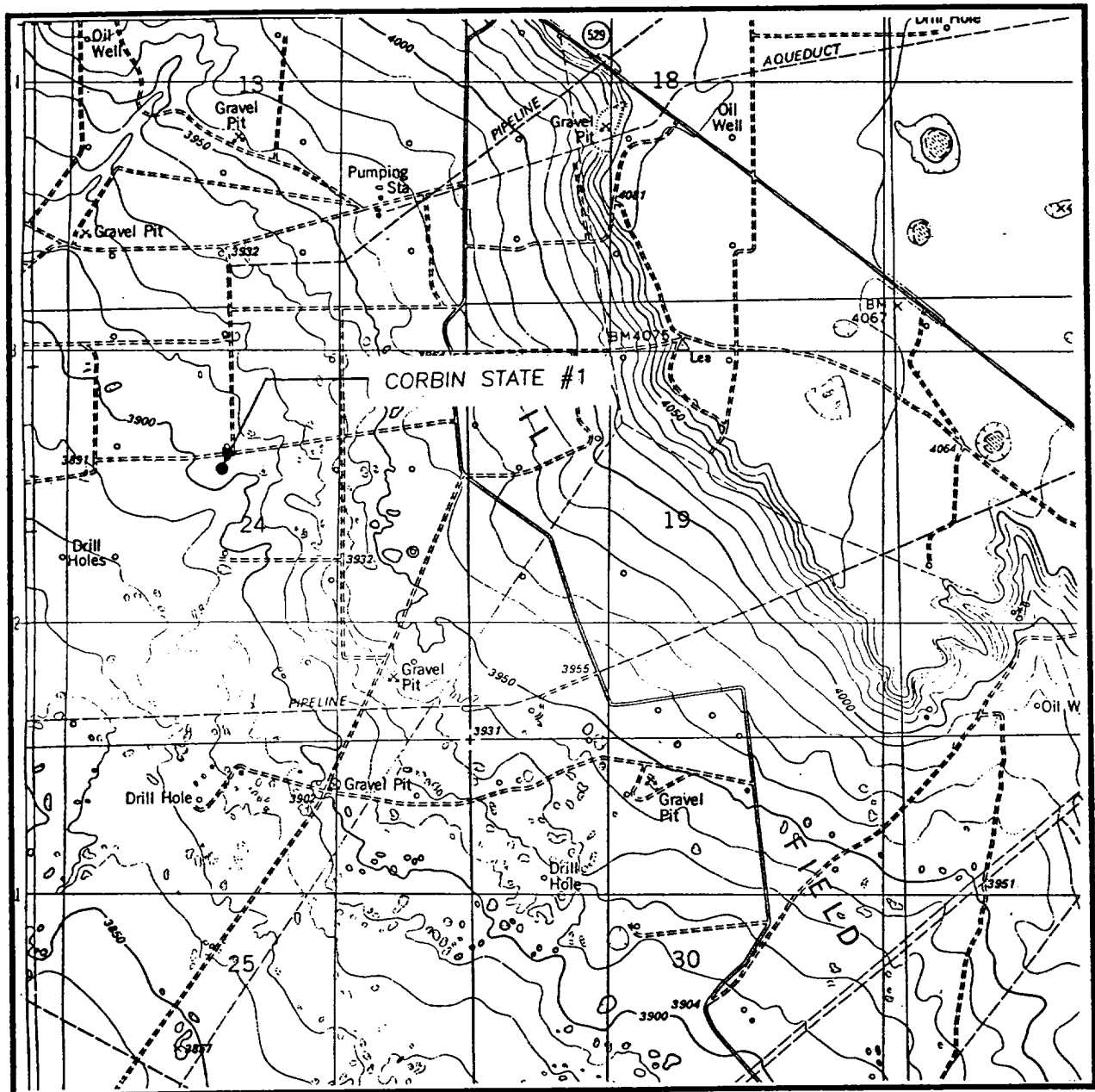
ELEVATION 3903

OPERATOR ARCO PERMIAN

LEASE CORBIN STATE

**JOHN WEST ENGINEERING
HOBBS, NEW MEXICO
(505) 393-3117**

LOCATION VERIFICATION MAP



SCALE: 1" = 2000'

CONTOUR INTERVAL:
IRONHOUSE WELL - 10'

SEC. 24 TWP. 18-S RGE. 33-E

SURVEY N.M.P.M.

COUNTY LEA

DESCRIPTION 1980' FNL & 2310' FWL

ELEVATION 3903

OPERATOR ARCO PERMIAN

LEASE CORBIN STATE

U.S.G.S. TOPOGRAPHIC MAP

IRONHOUSE WELL, N.M.

JOHN WEST ENGINEERING
HOBBS, NEW MEXICO
(505) 393-3117

ELF

1/1/77
ABOVE DATE DOES NOT
INDICATE WHEN
CONFIDENTIAL LOGS
WILL BE RELEASED