

District I  
PO Box 1980, Hobbs, NM 88241-1980  
District II  
811 S. 1st Street, Artesia, NM 88210-2834  
District III  
1000 Rio Brazos Rd., Aztec, NM 87410  
District IV  
2040 South Pacheco, Santa Fe, NM 87505

State of New Mexico  
Energy, Minerals & Natural Resources Department

OIL CONSERVATION DIVISION  
2040 South Pacheco  
Santa Fe, NM 87505

Form C-101  
Revised October 18, 1994  
Instructions on back  
Submit to Appropriate District Office  
State Lease - 6 Copies  
Fee Lease - 5 Copies

☐ AMENDED REPORT

APPLICATION FOR PERMIT TO DRILL, RE-ENTER, DEEPEN, PLUGBACK, OR ADD A ZONE

<sup>1</sup> Operator name and Address Chevron U.S.A. Inc. P.O. Box 1150 Midland, TX 79702		<sup>2</sup> OGRID Number 4323
<sup>4</sup> Property Code 23886		<sup>3</sup> API Number 30-025-34561
<sup>5</sup> Property Name MONUMENT "36" STATE		<sup>6</sup> Well No. 2

<sup>7</sup> Surface Location

UL or lot no.	Section	Township	Range	Lot. Idn	Feet from the	North/South Line	Feet from the	East/West line	County
I	36	18S	36E		1632	SOUTH	1298	EAST	LEA

<sup>8</sup> Proposed Bottom Hole Location If Different From Surface

UL or lot no.	Section	Township	Range	Lot. Idn	Feet from the	North/South Line	Feet from the	East/West line	County

<sup>9</sup> Proposed Pool 1

<sup>10</sup> Proposed Pool 2

Goodwin	MONUMENT; ABO, NORTH	46980
---------	----------------------	-------

<sup>11</sup> Work Type Code N	<sup>12</sup> Well Type Code O	<sup>13</sup> Cable/Rotary ROTARY	<sup>14</sup> Lease Type Code S	<sup>15</sup> Ground Level Elevation 3742'
<sup>16</sup> Multiple NO	<sup>17</sup> Proposed Depth 7500'	<sup>18</sup> Formation ABO	<sup>19</sup> Contractor UNKNOWN	<sup>20</sup> Spud Date 12/10/98

<sup>21</sup> Proposed Casing and Cement Program

Hole Size	Casing Size	Casing weight/foot	Setting Depth	Sacks of Cement	Estimated TOC
11"	8-5/8"	24	1500'	500	SURF
7-7/8"	5-1/2"	15.5	7200'	850	1300'

<sup>22</sup> Describe the proposed program. If this application is to DEEPEN or PLUG BACK give the data on the present productive zone and proposed new productive zone. Describe the blowout prevention program, if any. Use additional sheets if necessary

CHEVRON PROPOSES TO:  
DRILL TO 1500', RUN 8-5/8" CSG. CMT W/CL "C" TO SURF.  
DRILL TO 7500', RUN 5-1/2" CSG TO 7200'. CMT W/CL "C".

Permit Expires 1 Year From Approval  
Date Unless Drilling Underway

MUD PROGRAM: SURFACE HOLE: 0' - 1500' FRESH WATER 8.4 PPG  
PRODUCTION HOLE: 1500' - 7500' CUT BRINE WATER 8.8 PPG

<sup>23</sup> I hereby certify that the information given above is true and complete to the best of my knowledge and belief.

Signature: J. K. Ripley

Printed name: J. K. RIPLEY

Title: TECHNICAL ASSISTANT

OIL CONSERVATION DIVISION

Approved by: [Signature]

Title:

Approval Date: 11/19/98

Expiration Date:

11/19/98

(915)687-7148

5  
C  
3

50  
mP

DISTRICT I  
P.O. Box 1980, Hobbs, NM 88241-1980

DISTRICT II  
P.O. Drawer DD, Artesia, NM 88211-0719

DISTRICT III  
1000 Rio Brazos Rd., Aztec, NM 87410

DISTRICT IV  
P.O. BOX 2088, SANTA FE, N.M. 87504-2088

State of New Mexico  
Energy, Minerals and Natural Resources Department

Form C-102  
Revised February 10, 1994  
Submit to Appropriate District Office  
State Lease - 4 Copies  
Fee Lease - 3 Copies

OIL CONSERVATION DIVISION

P.O. Box 2088  
Santa Fe, New Mexico 87504-2088

☐ AMENDED REPORT

WELL LOCATION AND ACREAGE DEDICATION PLAT

API Number <b>30-025-34561</b>	Pool Code <b>2837046980</b>	Pool Name <b>Goodwin; MONUMENT; ABO, NORTH</b>
Property Code <b>23886</b>	Property Name <b>MONUMENT 36 STATE</b>	Well Number <b>2</b>
OGRID No. <b>4323</b>	Operator Name <b>CHEVRON U.S.A. PRODUCTION CO.</b>	Elevation <b>3742</b>

Surface Location

UL or lot No. <b>1</b>	Section <b>36</b>	Township <b>18 S</b>	Range <b>36 E</b>	Lot Idn	Feet from the <b>1632</b>	North/South line <b>SOUTH</b>	Feet from the <b>1298</b>	East/West line <b>EAST</b>	County <b>LEA</b>
---------------------------	----------------------	-------------------------	----------------------	---------	------------------------------	----------------------------------	------------------------------	-------------------------------	----------------------

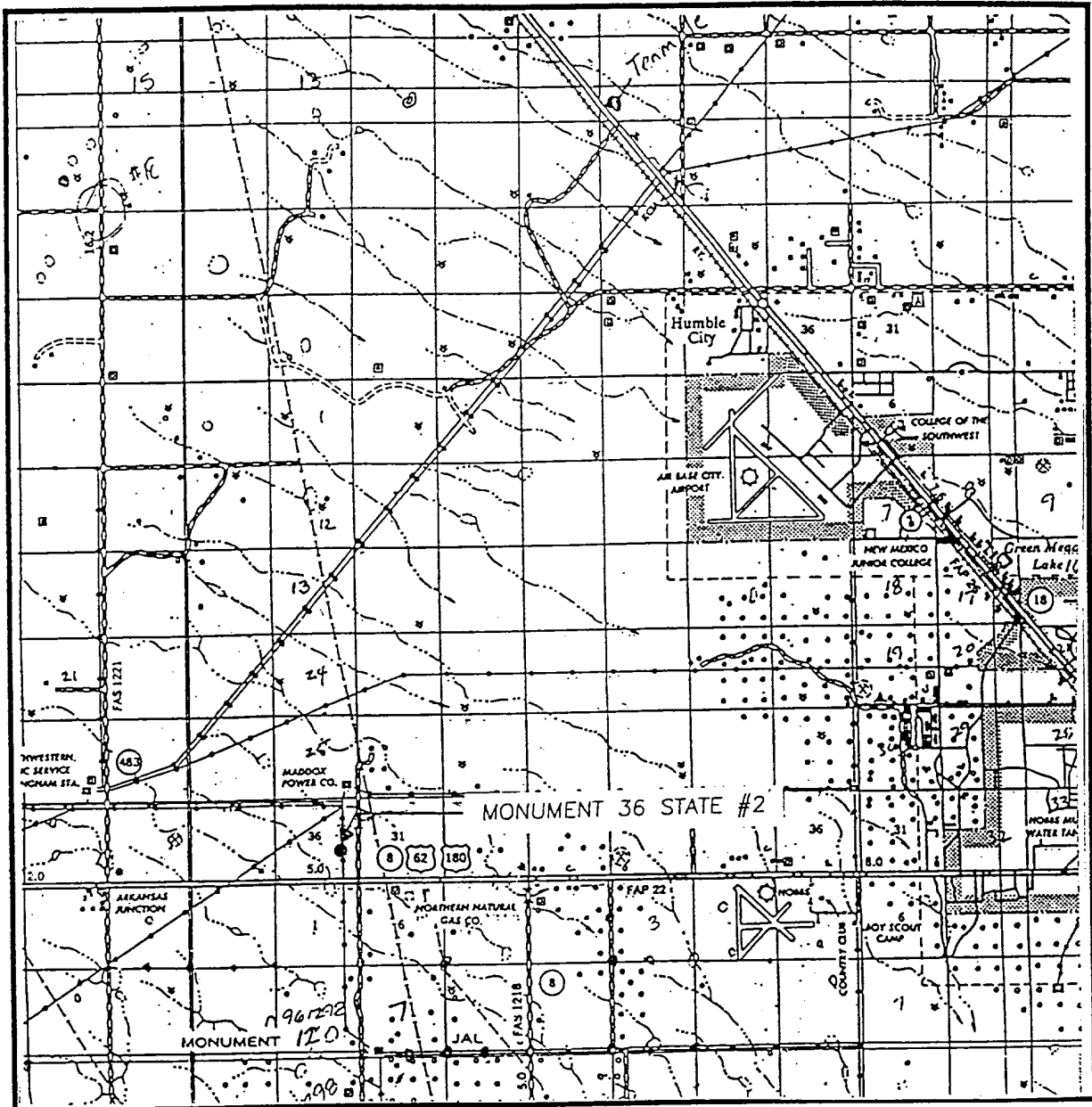
Bottom Hole Location If Different From Surface

UL or lot No.	Section	Township	Range	Lot Idn	Feet from the	North/South line	Feet from the	East/West line	County
Dedicated Acres <b>40</b>	Joint or Infill	Consolidation Code	Order No. <b>NSL-4193</b>						

NO ALLOWABLE WILL BE ASSIGNED TO THIS COMPLETION UNTIL ALL INTERESTS HAVE BEEN CONSOLIDATED  
OR A NON-STANDARD UNIT HAS BEEN APPROVED BY THE DIVISION

								OPERATOR CERTIFICATION	
								I hereby certify the the information contained herein is true and complete to the best of my knowledge and belief.	
								Signature <b>J. K. Ripley</b>	
								Printed Name <b>J. K. RIPLEY</b>	
								Title <b>T.A.</b>	
								Date <b>11/19/98</b>	
								SURVEYOR CERTIFICATION	
								I hereby certify that the well location shown on this plat was plotted from field notes of actual surveys made by me or under my supervision, and that the same is true and correct to the best of my belief.	
								Date Surveyed <b>OCTOBER 29, 1998</b>	
								Signature <b>RONALD J. EIDSON</b>	
								Professional Surveyor <b>RONALD J. EIDSON</b>	
								Date <b>198-11-135</b>	
								Certification No. <b>RONALD J. EIDSON 3239</b>	
								Professional <b>RONALD J. EIDSON 12641</b>	

# VICINITY MAP

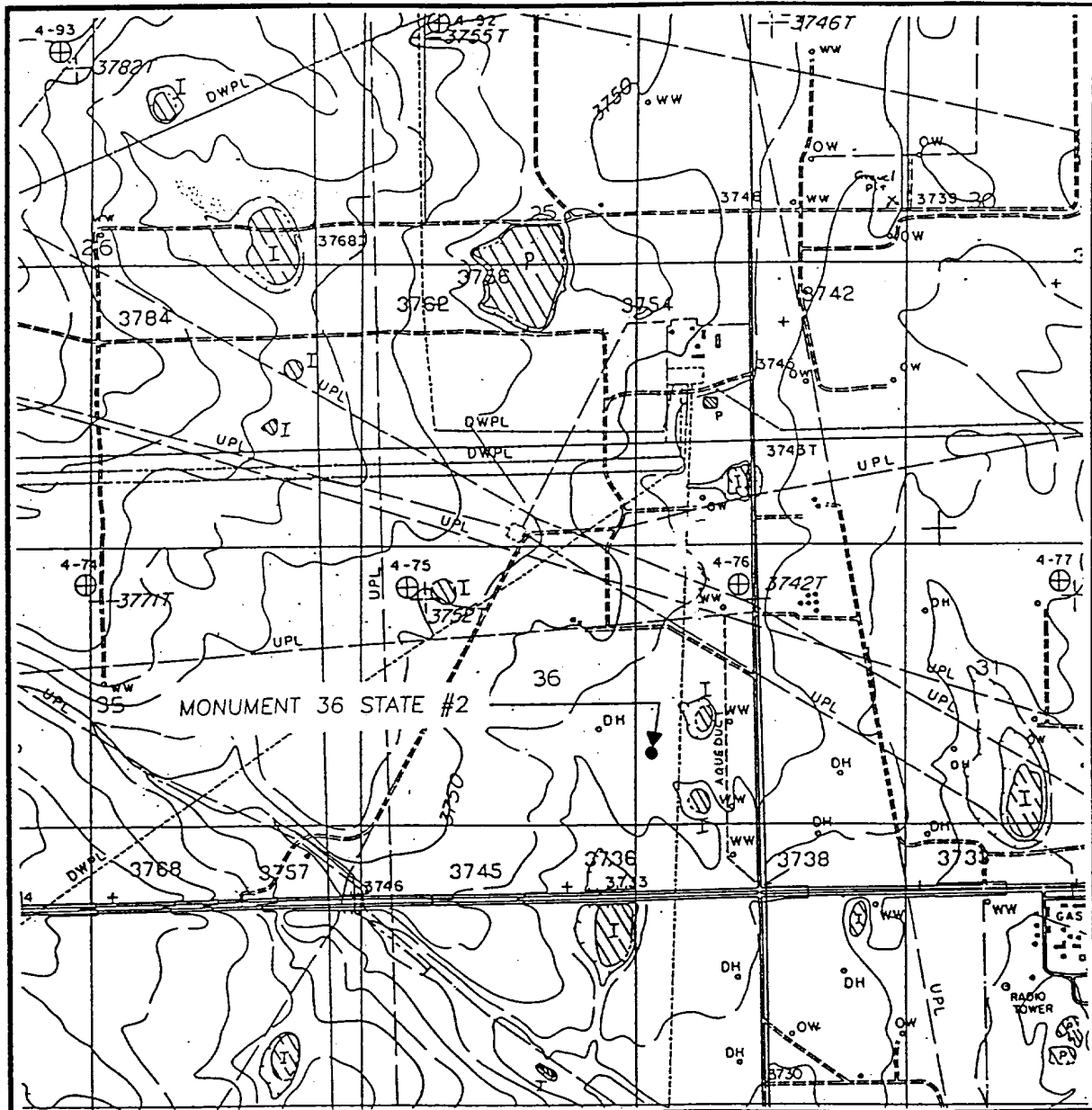


SCALE: 1" = 2 MILES

SEC. 36 TWP. 18-S RGE. 36-E  
 SURVEY N.M.P.M.  
 COUNTY LEA  
 DESCRIPTION 1632' FSL & 1298' FEL  
 ELEVATION 3742  
 OPERATOR CHEVRON U.S.A. PRODUCTION CO.  
 LEASE MONUMENT 36 STATE

**JOHN WEST ENGINEERING**  
**HOBBS, NEW MEXICO**  
**(505) 393-3117**

# LOCATION VERIFICATION MAP



SCALE: 1" = 2000'

CONTOUR INTERVAL:  
MONUMENT NORTH - 10'  
WITH 5' SUPPL.

SEC. 36 TWP. 18-S RGE. 36-E

SURVEY N.M.P.M.

COUNTY LEA

DESCRIPTION 1632' FSL & 1298' FEL

ELEVATION 3742

OPERATOR CHEVRON U.S.A.  
PRODUCTION CO.

LEASE MONUMENT 36 STATE

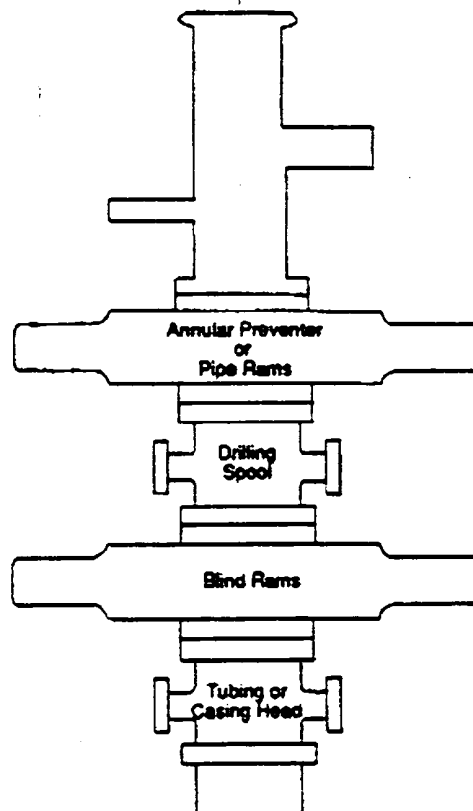
U.S.G.S. TOPOGRAPHIC MAP  
MONUMENT NORTH, N.M.

**JOHN WEST ENGINEERING**  
**HOBBS, NEW MEXICO**  
**(505) 393-3117**

CHEVRON DRILLING REFERENCE SERIES  
VOLUME ELEVEN  
WELL CONTROL AND BLOWOUT PREVENTION

D. CLASS II-B BLOWOUT PREVENTER STACK:

**Figure 11J.3**  
**Class II-B Blowout Preventer Stack**



The Class II-B preventer stack is designed for drilling or workover operations. It is composed of a single hydraulically operated annular preventer on top, then a drilling spool, and a single blind ram preventer on bottom. In an alternate configuration, a single pipe ram preventer may be substituted for the annular preventer. The choke and kill lines are installed onto the drilling spool and must have a minimum internal diameter of 2". An emergency kill line may be installed on the wellhead. As the maximum anticipated surface pressure of this stack is less than 2000 psi, screwed connections may be used. All components must be of steel construction. The Class II-B blowout preventer stack is shown to the left in Figure 11J.3.

*Monument "36" State*

*# 1*

*# 2*

*# 3*