

District I
1625 N. French Dr., Hobbs, NM 88240
District II
811 South First, Artesia, NM 88210
District III
1000 Rio Brazos Road, Aztec, NM 87410
District IV
2040 South Pacheco, Santa Fe, NM 87505

State of New Mexico
Energy Minerals and Natural Resources

Oil Conservation Division
2040 South Pacheco
Santa Fe, NM 87505

Form C-101
Revised March 17, 1999

Submit to appropriate District Office
State Lease - 6 Copies
Fee Lease - 5 Copies

☐ AMENDED REPORT

APPLICATION FOR PERMIT TO DRILL, RE-ENTER, DEEPEN, PLUGBACK, OR ADD A ZONE

¹ Operator Name and Address EnerQuest Resources, LLC P. O. Box 11150 Midland, TX 79702		² OGRID Number 160620
³ Property Code 25122		⁴ API Number 30-025-34786
⁵ Property Name Goodwin "30"		⁶ Well No. 1

⁷ Surface Location									
UL or lot no.	Section	Township	Range	Lot Idn	Feet from the	North/South line	Feet from the	East/West line	County
K	30	18S	37E		1650	South	1650	West	Lea

⁸ Proposed Bottom Hole Location If Different From Surface									
UL or lot no.	Section	Township	Range	Lot Idn	Feet from the	North/South line	Feet from the	East/West line	County
⁹ Proposed Pool 1 Goodwin (Abo)					¹⁰ Proposed Pool 2 Goodwin (Drinkard)				

¹¹ Work Type Code N	¹² Well Type Code O	¹³ Cable/Rotary R	¹⁴ Lease Type Code S	¹⁵ Ground Level Elevation 3737'
¹⁶ Multiple No	¹⁷ Proposed Depth 7700'	¹⁸ Formation Abo	¹⁹ Contractor Not yet determined	²⁰ Spud Date 12/29/99

²¹ Proposed Casing and Cement Program					
Hole Size	Casing Size	Casing weight/foot	Setting Depth	Sacks of Cement	Estimated TOC
12 1/4"	8 5/8"	24#	1700'	800 sx	Surface
7 7/8"	5 1/2"	15.5# & 17#	7700'	600 sx	4500'

²² Describe the proposed program. If this application is to DEEPEN or PLUG BACK, give the data on the present productive zone and proposed new productive zone.

Describe the blowout prevention program, if any. Use additional sheets if necessary.

Drill 12 1/4" hole to 1700', set & cement 8 5/8" csg. (circ to surface).
Drill out 8 5/8" csg, drill 7 7/8" hole to 7700', set & cement 5 1/2" csg.
Commence well completion operations.

BOP's: 3000 psi double ram hydraulic & 3000 psi annular

Refracturing - Yag. Frac. system
Bore holes Drilling Underway

²³ I hereby certify that the information given above is true and complete to the best of my knowledge and belief.

Signature:

J. T. Lent

Printed name: J. T. Lent

Title: Vice President-Engineering

Date: 12/8/99

Phone: 915/685-3116

OIL CONSERVATION DIVISION

Approved by:

WILLIAMS

Title:

Approval Date:

Expiration Date:

Conditions of Approval:

Attached ☐

DISTRICT I
P.O. Box 1980, Hobbs, NM 88241-1980

State of New Mexico
Energy, Minerals and Natural Resources Department

Form C-102
Revised February 10, 1994
Submit to Appropriate District Office
State Lease - 4 Copies
Fee Lease - 3 Copies

DISTRICT II
P.O. Drawer DD, Artesia, NM 88211-0719

DISTRICT III
1000 Rio Brazos Rd., Artec, NM 87410

OIL CONSERVATION DIVISION

P.O. Box 2088
Santa Fe, New Mexico 87504-2088

DISTRICT IV
P.O. Box 2088, Santa Fe, NM 87504-2088

☐ AMENDED REPORT

WELL LOCATION AND ACREAGE DEDICATION PLAT

API Number 30-025-34786	Pool Code 28370	Pool Name Goodwin (Abo)
Property Code 25122	Property Name GOODWIN "30"	Well Number 1
OGRID No. 160620	Operator Name ENERQUEST RESOURCES, LLC	Elevation 3737

Surface Location

UL or lot No.	Section	Township	Range	Lot Idn	Feet from the	North/South line	Feet from the	East/West line	County
K	30	18 S	37 E		1650	SOUTH	1650	WEST	LEA

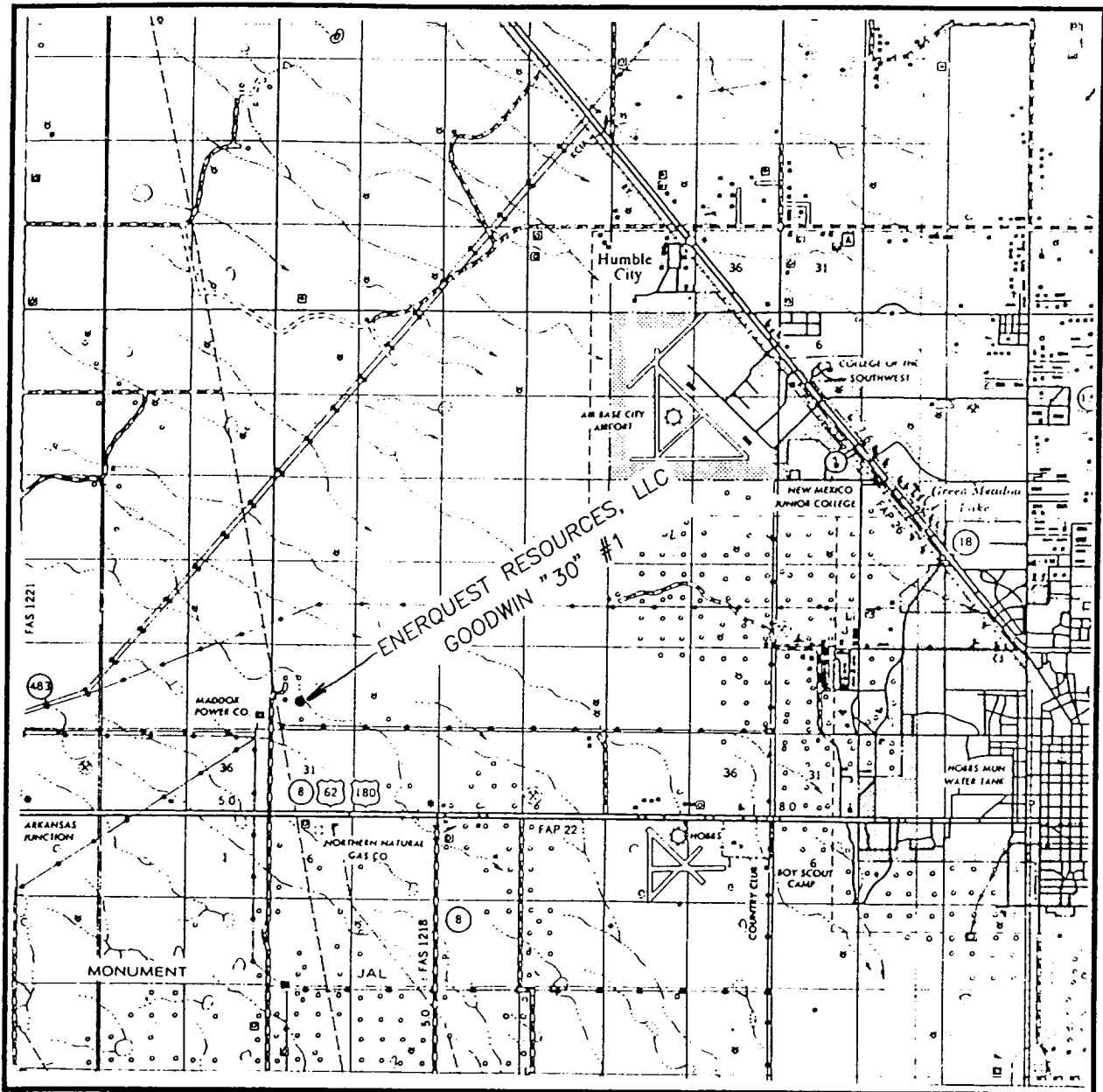
Bottom Hole Location If Different From Surface

UL or lot No.	Section	Township	Range	Lot Idn	Feet from the	North/South line	Feet from the	East/West line	County
Dedicated Acres 40	Joint or Infill	Consolidation Code	Order No.						

NO ALLOWABLE WILL BE ASSIGNED TO THIS COMPLETION UNTIL ALL INTERESTS HAVE BEEN CONSOLIDATED
OR A NON-STANDARD UNIT HAS BEEN APPROVED BY THE DIVISION

	<p>OPERATOR CERTIFICATION</p> <p>I hereby certify the the information contained herein is true and complete to the best of my knowledge and belief.</p> <p>Signature J. T. Lent Printed Name Vice President-Engineering Title 12/7/99 Date</p> <p>SURVEYOR CERTIFICATION</p> <p>I hereby certify that the well location shown on this plat was plotted from field notes of actual surveys made by me or under my supervision and that the same is true and correct to the best of my belief.</p> <p>DECEMBER 1, 1999</p> <p>Date Surveyed Signature & Seal of Professional Surveyor Professional Surveyor NEW MEXICO 3239 12-03-99 S.W.O. Num. 99-1022</p> <p>Certificate No. RONALD EIDSON, 3239 RONALD EIDSON, 12641 JASON McDONALD, 12185</p>
--	--

VICINITY MAP



SCALE: 1" = 2 MILES

SEC. 30 TWP. 18-S RGE. 37-E

SURVEY N.M.P.M.

COUNTY LEA

DESCRIPTION 1650' FSL & 1650' FWL

ELEVATION 3737

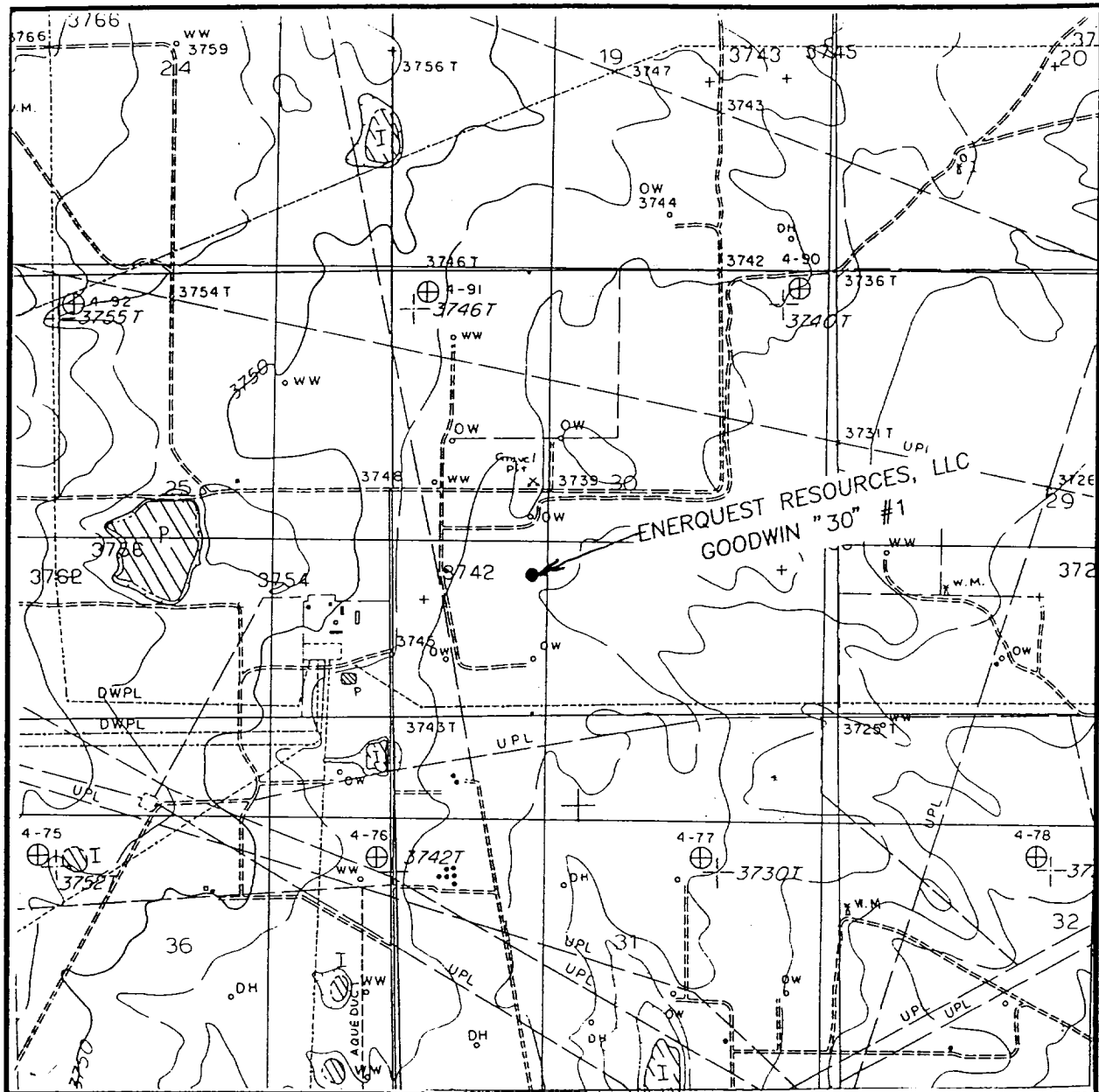
OPERATOR ENERQUEST RESOURCES, LLC

LEASE GOODWIN "30"

JOHN WEST SURVEYING
HOBBS, NEW MEXICO

(505) 393-3117

LOCATION VERIFICATION MAP



SCALE: 1" = 2000'

CONTOUR INTERVAL - 10'

SEC. 30 TWP. 18-S RGE. 37-E

SURVEY N.M.P.M.

COUNTY LEA

DESCRIPTION 1650' FSL & 1650' FWL

ELEVATION 3737

OPERATOR ENERQUEST RESOURCES, LLC

LEASE GOODWIN "30"

U.S.G.S. TOPOGRAPHIC MAP

MONUMENT NORTH, N.M.

**JOHN WEST SURVEYING
HOBBS, NEW MEXICO**

(505) 393-3117

ELF
ABOVE DATE DOES NOT
INDICATE WHEN
CONFIDENTIAL LOGS
WILL BE RELEASED