

District I  
1625 N. French Dr., Hobbs, NM 88240  
District II  
811 South First, Artesia, NM 88210  
District III  
1000 Rio Brazos Road, Aztec, NM 87410  
District IV  
2040 South Pacheco, Santa Fe, NM 87505

State of New Mexico  
Energy Minerals and Natural Resources

Oil Conservation Division  
2040 South Pacheco  
Santa Fe, NM 87505

Form C-101  
Revised March 17, 1999

Submit to appropriate District Office  
State Lease - 6 Copies  
Fee Lease - 5 Copies

☐ AMENDED REPORT

APPLICATION FOR PERMIT TO DRILL, RE-ENTER, DEEPEN, PLUGBACK, OR ADD A ZONE

|   |  |   |
|---|--|---|
| <sup>1</sup> Operator Name and Address<br>Lynx Energy Company, Inc.<br>2121 San Jacinto, Ste 860, LB 52<br>Dallas, TX 75201 |  | <sup>2</sup> OGRID Number<br>175071     |
| <sup>3</sup> Property Code<br>24182   |  | <sup>3</sup> API Number<br>30-025-34787 |
| <sup>5</sup> Property Name<br>LANEY REESE   |  | <sup>6</sup> Well No.<br>3              |

<sup>7</sup> Surface Location

| UL or lot no. | Section | Township | Range | Lot Idn | Feet from the | North/South line | Feet from the | East/West line | County |
|---------------|---------|----------|-------|---------|---------------|------------------|---------------|----------------|--------|
| 1             | 30      | 18S      | 39E   |         | 1650          | SOUTH            | 330           | EAST           | LEA    |

<sup>8</sup> Proposed Bottom Hole Location If Different From Surface

| UL or lot no. | Section | Township | Range | Lot Idn | Feet from the | North/South line | Feet from the | East/West line | County |
|---------------|---------|----------|-------|---------|---------------|------------------|---------------|----------------|--------|
|               |         |          |       |         |               |                  |               |                |        |

|   |                               |
|---|-------------------------------|
| <sup>9</sup> Proposed Pool 1<br>HOBBS SAN ANDRES EAST | <sup>10</sup> Proposed Pool 2 |
|---|-------------------------------|

|                                   |                                       |                                       |  |   |
|-----------------------------------|---------------------------------------|---------------------------------------|--|---|
| <sup>11</sup> Work Type Code<br>N | <sup>12</sup> Well Type Code<br>O     | <sup>13</sup> Cable/Rotary<br>R       | <sup>14</sup> Lease Type Code<br>P               | <sup>15</sup> Ground Level Elevation<br>3614' |
| <sup>16</sup> Multiple<br>NO      | <sup>17</sup> Proposed Depth<br>4700' | <sup>18</sup> Formation<br>SAN ANDRES | <sup>19</sup> Contractor<br>Rod Ric Drilling Co. | <sup>20</sup> Spud Date<br>12/10/99           |

<sup>21</sup> Proposed Casing and Cement Program

| Hole Size | Casing Size | Casing weight/foot | Setting Depth | Sacks of Cement | Estimated TOC |
|-----------|-------------|--------------------|---------------|-----------------|---------------|
| 12-1/4"   | 8-5/8"      | 24#                | 1900'         | 950             | Surface       |
| 7-7/8"    | 5-1/2"      | 15.5#              | 4700'         | 500             | 1800'         |
|           |             |                    |               |                 |               |
|           |             |                    |               |                 |               |
|           |             |                    |               |                 |               |

22 Describe the proposed program. If this application is to DEEPEN or PLUG BACK, give the data on the present productive zone and proposed new productive zone. Describe the blowout prevention program, if any. Use additional sheets if necessary.

1. Drill 12-1/4" hole to 1900', set 8-5/8", J-55, 24# ST&C on bottom. Cement with 700 sx HOWCO Light cement & additives, tail in with 250 sx Class "C" & 2% CaCl. Circulate cement to surface.
2. Drill 7-7/8" hole to 4700', set 5-1/2", K-55, 15.5# casing on bottom and cement with 250 sx HOWCO Light & additives, tail in with 250 sx Class "C" & 2% CaCl, estimated top of cement 1800'.

Permit Expires 1 Year From Approval  
Date Unless Drilling Underway

|  |                         |                                   |                  |
|--|-------------------------|-----------------------------------|------------------|
| <sup>23</sup> I hereby certify that the information given above is true and complete to the best of my knowledge and belief. |                         | OIL CONSERVATION DIVISION         |                  |
| Signature: <i>Bill Bledsoe</i>   |                         | Approved by: <i>Paul Reutz</i>    |                  |
| Printed name: Bill Bledsoe   |                         | Title: Geologist                  |                  |
| Title: Operations Manager  |                         | Approval Date: 11/17/99           | Expiration Date: |
| Date: 11/17/99   | Phone: 214/969-5555x239 | Conditions of Approval:           |                  |
|  |                         | Attached <input type="checkbox"/> |                  |

24  
CMP

DISTRICT I  
P.O. Box 1880, Hobbs, NM 88241-1980

State of New Mexico  
Energy, Minerals and Natural Resources Department

Form C-102  
Revised February 10, 1994  
Submit to Appropriate District Office  
State Lease - 4 Copies  
Fee Lease - 3 Copies

DISTRICT II  
P.O. Drawer DD, Artesia, NM 88211-0719

DISTRICT III  
1000 Rio Brazos Rd., Aztec, NM 87410

DISTRICT IV  
P.O. BOX 2088, SANTA FE, N.M. 87504-2088

OIL CONSERVATION DIVISION

P.O. Box 2088  
Santa Fe, New Mexico 87504-2088

☐ AMENDED REPORT

WELL LOCATION AND ACREAGE DEDICATION PLAT

|                                   |   |   |
|-----------------------------------|---|---|
| API Number<br><b>30-025-34787</b> | Pool Code<br><b>32300</b>                         | Pool Name<br><b>HOBBS SAN ANDRES EAST</b> |
| Property Code<br><b>24/82</b>     | Property Name<br><b>LANEY REESE</b>               | Well Number<br><b>3</b>                   |
| OGRID No.<br><b>175071</b>        | Operator Name<br><b>LYNX ENERGY COMPANY, INC.</b> | Elevation<br><b>3608</b>                  |

Surface Location

| UL or lot No. | Section   | Township    | Range       | Lot Idn | Feet from the | North/South line | Feet from the | East/West line | County     |
|---------------|-----------|-------------|-------------|---------|---------------|------------------|---------------|----------------|------------|
| <b>1</b>      | <b>30</b> | <b>18 S</b> | <b>39 E</b> |         | <b>1650</b>   | <b>SOUTH</b>     | <b>330</b>    | <b>EAST</b>    | <b>LEA</b> |

Bottom Hole Location If Different From Surface

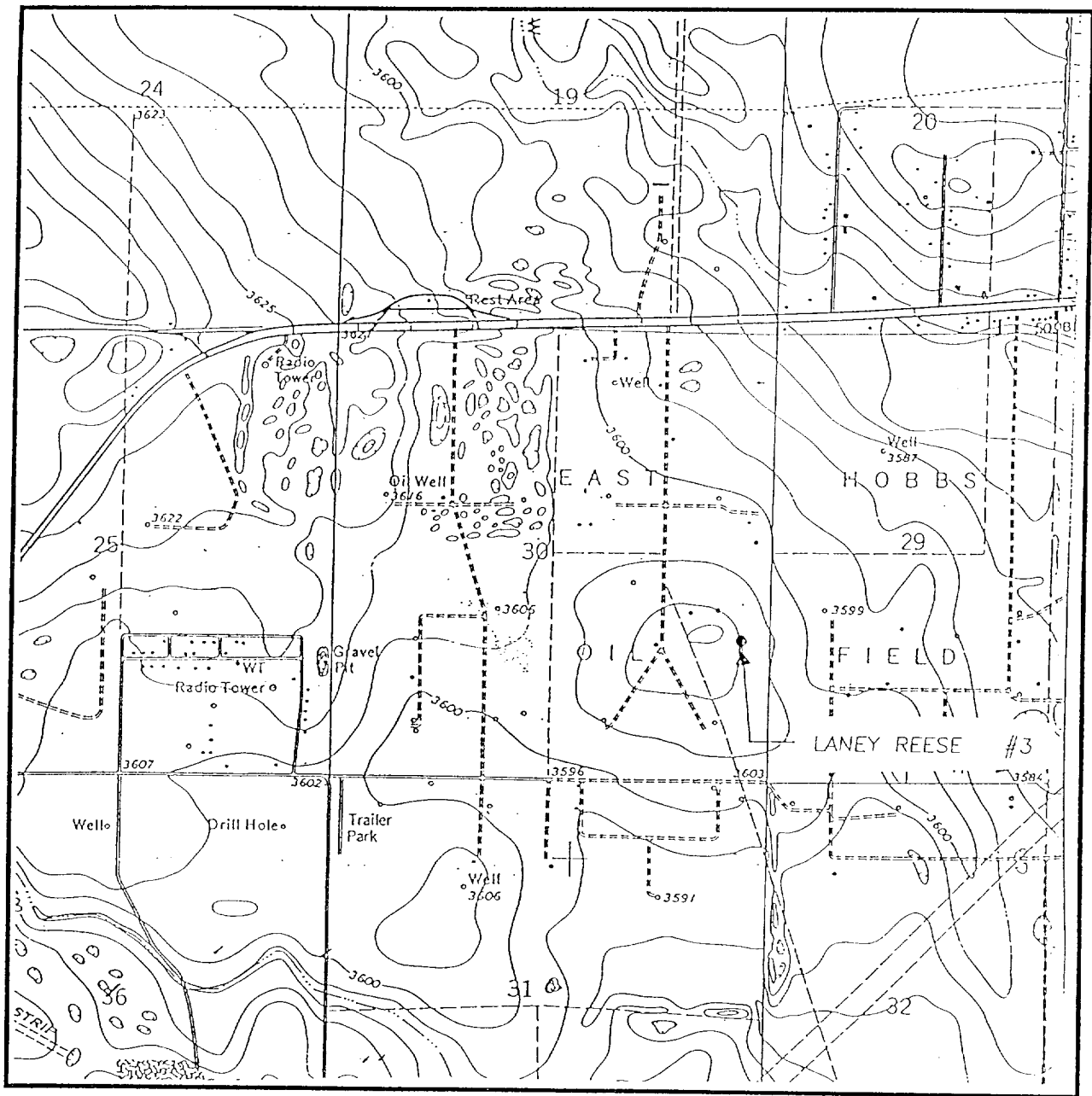
| UL or lot No. | Section | Township | Range | Lot Idn | Feet from the | North/South line | Feet from the | East/West line | County |
|---------------|---------|----------|-------|---------|---------------|------------------|---------------|----------------|--------|
|               |         |          |       |         |               |                  |               |                |        |

|                              |                 |                    |           |
|------------------------------|-----------------|--------------------|-----------|
| Dedicated Acres<br><b>40</b> | Joint or Infill | Consolidation Code | Order No. |
|------------------------------|-----------------|--------------------|-----------|

NO ALLOWABLE WILL BE ASSIGNED TO THIS COMPLETION UNTIL ALL INTERESTS HAVE BEEN CONSOLIDATED  
OR A NON-STANDARD UNIT HAS BEEN APPROVED BY THE DIVISION

|  |   |
|--|---|
|  | <p><b>OPERATOR CERTIFICATION</b></p> <p>I hereby certify the the information contained herein is true and complete to the best of my knowledge and belief.</p> <p><i>Bill Bledsoe</i><br/>Signature</p> <p><b>Bill Bledsoe</b><br/>Printed Name</p> <p><b>Operations Manager</b><br/>Title</p> <p><b>12/03/99</b><br/>Date</p>  |
|  | <p><b>SURVEYOR CERTIFICATION</b></p> <p>I hereby certify that the well location shown on this plat was plotted from field notes of actual surveys made by me or under my supervision and that the same is true and correct to the best of my belief.</p> <p><b>NOVEMBER 5, 1999</b><br/>Date Surveyed</p> <p><b>DMCC</b></p> <p>Signature &amp; Seal of Professional Surveyor<br/><i>Ronald J. Eidson</i><br/><b>11-11-99</b><br/><b>99-11-0920</b></p> <p>Certificate No. <b>RONALD J. EIDSON 3239</b><br/><b>GARY DOSON 12641</b><br/><b>MACON McDONALD 12185</b></p> |

# LOCATION VERIFICATION MAP



SCALE: 1" = 2000'

CONTOUR INTERVAL:  
HOBBS EAST - 5'

SEC. 30 TWP. 18-S RGE. 39-E

SURVEY N.M.P.M.

COUNTY LEA

DESCRIPTION 1650' FSL & 330' FEL

ELEVATION 3608

OPERATOR LYNX ENERGY  
COMPANY, INC.

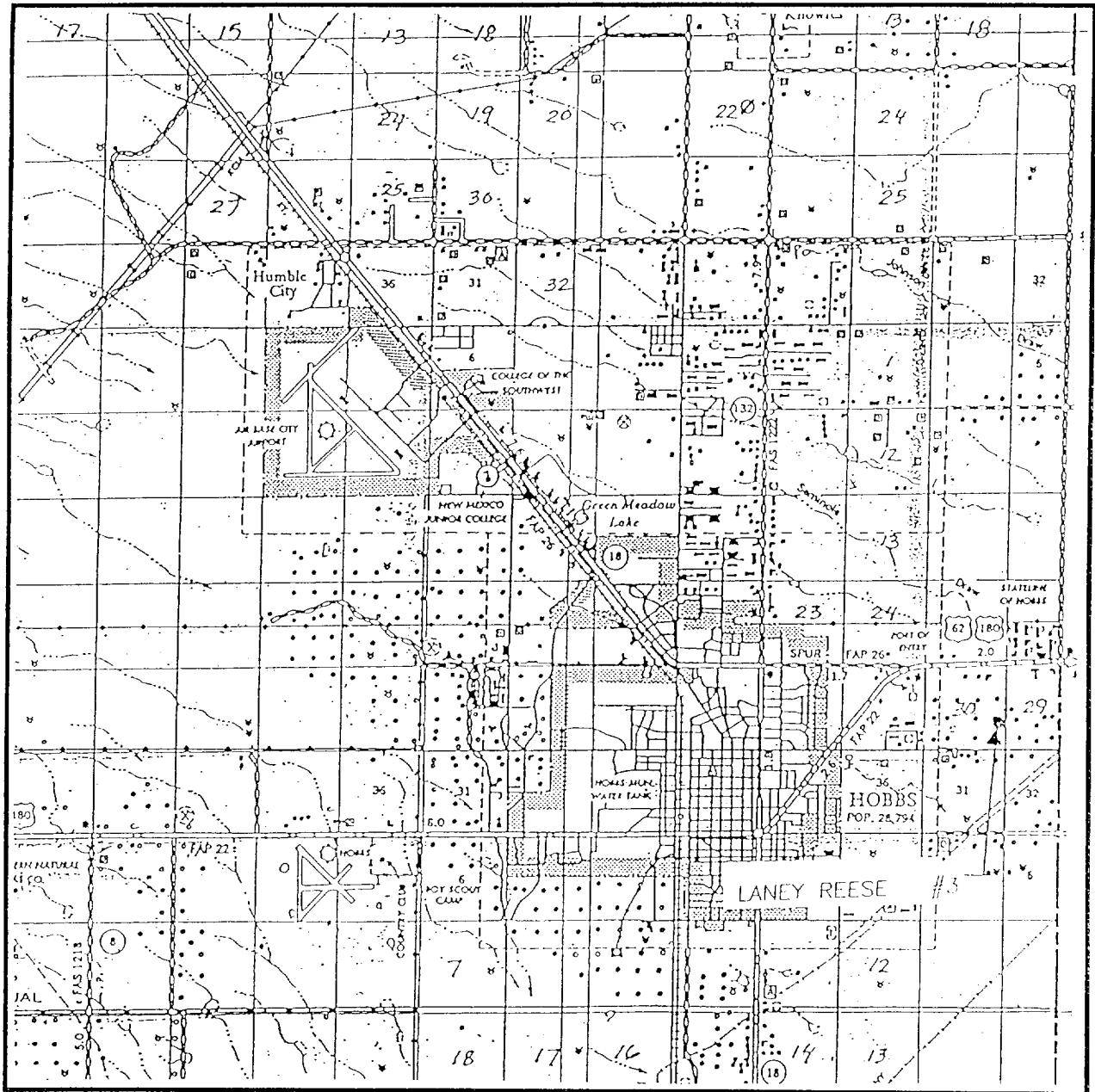
LEASE LANEY REESE

U.S.G.S. TOPOGRAPHIC MAP

HOBBS EAST, N.M.

**JOHN WEST ENGINEERING**  
**HOBBS, NEW MEXICO**  
**(505) 393-3117**

# VICINITY MAP



SCALE: 1" = 2 MILES

SEC. 30 TWP. 18-S RGE. 39-E

SURVEY N.M.P.M.

COUNTY LEA

DESCRIPTION 1650' FSL & 330' FEL

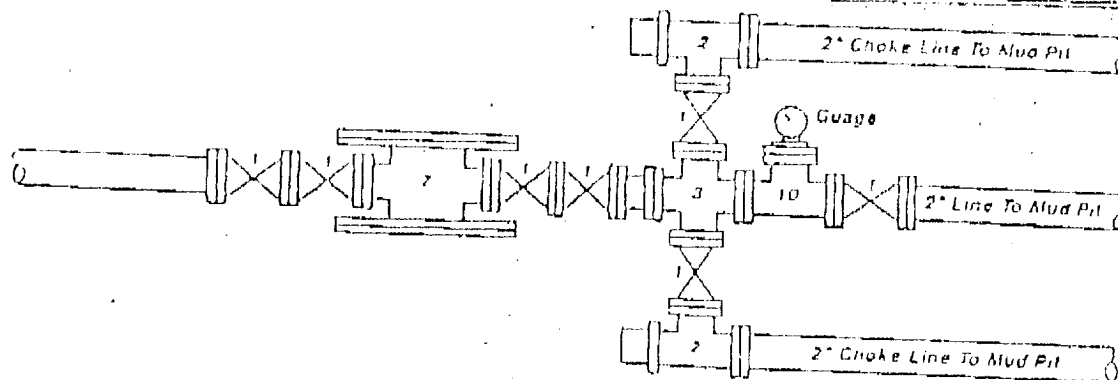
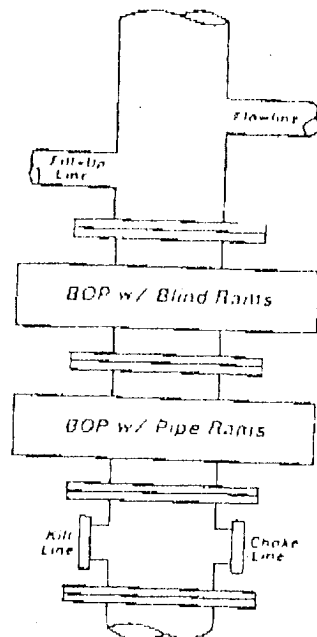
ELEVATION 3608

OPERATOR LYNX ENERGY COMPANY, INC

LEASE LANEY REESE

**JOHN WEST ENGINEERING**  
**HOBBS, NEW MEXICO**  
**(505) 393-3117**

ROD RIC CORPORATION  
LOWOUT PREVENTER - 3000 ps.



Legend

1. 2" flanged all steel valve must be either Cameron "F" Halliburton Low Torque, or Shaffer Flo-Seal
2. 2" flanged adjustable chokes, min. 1" full opening & equipped w/ hand trim.
3. 4" x 2" flanged steel cross
4. 4" flanged steel tee
5. 4" flanged all steel valve (Type as in No. 1)
6. Drilling spool w/ 2" x 4" flanged steel outlet
7. Drilling spool w/ 2" x 2" flanged outlet.
8. 2" x 2" flanged steel cross.
9. 4" pressure operated gate valve.
10. 2" flanged steel line

Notes

Choke manifold may be located in any convenient position. Use all steel fittings throughout. Make 90° turns with butt plugged tees only. No field welding will be permitted on any of the components of the choke manifold and related equipment upstream of the chokes. The choke spool and all lines and fittings must be at least equivalent to the test pressure of the preventers required, independent closing control unit with clearly marked controls to be located on derrick floor near driller's position.

ABOVE DATE DOES NOT  
INDICATE WHEN  
CONFIDENTIAL LOGS  
WILL BE RELEASED

ELF