

DISTRICT I  
P. O. Box 1980, Hobbs, NM 88240

DISTRICT II  
P. O. Drawer DD, Artesia, NM 88210

DISTRICT III  
1000 Rio Brazos Rd., Aztec, NM 87410

DISTRICT IV  
P. O. Box 2088, Santa Fe, NM 87504-2088

State of New Mexico  
Energy, Minerals and Natural Resources Department

OIL CONSERVATION DIVISION

PO Box 2088  
Santa Fe, NM 87504-2088

Form C-102  
Revised February 10, 1994

Instructions on back

Submit to Appropriate District Office

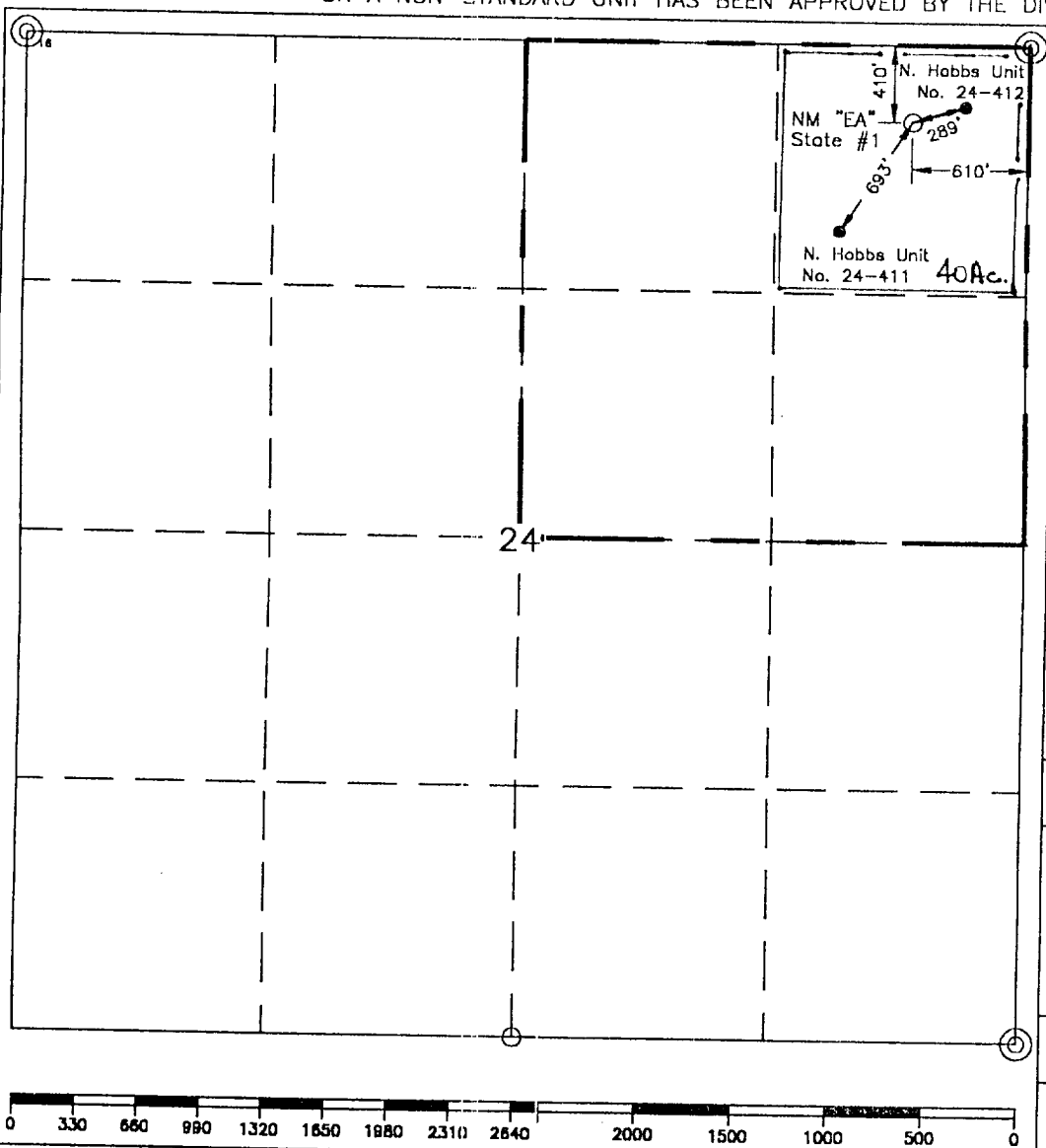
State Lease-4 copies  
Fee Lease-3 copies

WELL LOCATION AND ACREAGE DEDICATION PLAT

☐ AMENDED REPORT

<sup>1</sup> API Number 30-025-34788		<sup>2</sup> Pool Code -		<sup>3</sup> Pool Name wildcat; Blainey, Drinkard, Abo, Silero-Devonian; Undesignated					
<sup>4</sup> Property Code 25125		<sup>5</sup> Property Name New Mexico "EA" State							
<sup>6</sup> GRID No. 22351		<sup>7</sup> Operator Name TEXACO EXPLORATION & PRODUCTION, INC.							
				<sup>8</sup> Well Number 1					
				<sup>9</sup> Elevation 3672'					
<sup>10</sup> Surface Location									
UL or lot no. A	Section 24	Township 18-S	Range 37-E	Lat Idn 410'	North/South line North	Feet from the East	East/West line 610'	County Lea	
<sup>11</sup> Bottom Hole Location If Different From Surface									
UL or lot no.	Section	Township	Range	Lat Idn	Feet from the	North/South line	Feet from the	East/West line	County
<sup>12</sup> Dedicated Acres 40		<sup>13</sup> Joint or Infill		<sup>14</sup> Consolidation Code		<sup>15</sup> Order No.			

NO ALLOWABLE WILL BE ASSIGNED TO THIS COMPLETION UNTIL ALL INTERESTS HAVE BEEN CONSOLIDATED  
OR A NON-STANDARD UNIT HAS BEEN APPROVED BY THE DIVISION.



<sup>16</sup> OPERATOR CERTIFICATION	
I hereby certify that the information contained herein is true and complete to the best of my knowledge and belief.	
Signature	<i>A. Phil Ryan</i>
Printed Name	A. Phil Ryan
Position	Commissioner Coordinator
Company	Texaco Expl. & Prod. Inc.
Date	December 7, 1999
<sup>17</sup> SURVEYOR CERTIFICATION	
I hereby certify that the well location shown on this plat was plotted from field notes of actual surveys made by me or under my supervision, and that the same is true and correct to the best of my knowledge and belief.	
Date Surveyed	December 1, 1999
Signature & Seal of Professional Surveyor	<i>John S. Piper</i>
Certificate No.	7254 John S. Piper
Sheet	

○ = Staked Location • = Producing Well = Injection Well ✕ = Water Supply Well ◆ = Plugged & Abandon Well  
⊙ = Found Section Corner, 2 or 3" Iron Pipe & GLO B.C. ○ = Found 1/4 Section Corner, 1" Iron Pipe & GLO B.C.

ADDITIONAL INFORMATION ON THE LOCATION

State Plane Coordinates			
Northing 634,487.69		Easting 890,366.57	
Latitude 32°44'20.78"		Longitude 103°11'53.59"	
Zone	North American Datum	Combined Grid Factor	Coordinate File
East	1983	0.99987348	NM_AE_ST
Drawing File		Field Book	
Nm_EA_St1.dwg		Lea County 18, Pg. 46	