

District I
PO Box 1980, Hobbs, NM 88241-1980
District II
811 S. 1st Street, Artesia, NM 88210-2834
District III
1000 Rio Brazos Rd., Aztec, NM 87410
District IV
2040 South Pacheco, Santa Fe, NM 87505

OIL CONSERVATION DIVISION
2040 South Pacheco
Santa Fe, NM 87505

☐ AMENDED REPORT

APPLICATION FOR PERMIT TO DRILL, RE-ENTER, DEEPEN, PLUGBACK, OR ADD A ZONE

¹ Operator name and Address Altura Energy LTD P.O. Box 4294 Houston, TX 77210-4294		² OGRID Number 157984
		³ API Number 30-025-34870
⁴ Property Code 19520	⁵ Property Name North Hobbs G/SA Unit	⁶ Well No. 624

⁷ Surface Location									
UL or lot no.	Section	Township	Range	Lot. Idn	Feet from the	North/South Line	Feet from the	East/West line	County
N	29	18-S	38-E		1150	South	1948	West	Lea

⁸ Proposed Bottom Hole Location If Different From Surface									
UL or lot no.	Section	Township	Range	Lot. Idn	Feet from the	North/South Line	Feet from the	East/West line	County

⁹ Proposed Pool 1					¹⁰ Proposed Pool 2				
Hobbs; Grayburg - San Andres									

¹¹ Work Type Code N	¹² Well Type Code O	¹³ Cable/Rotary R	¹⁴ Lease Type Code S	¹⁵ Ground Level Elevation 3644
¹⁶ Multiple No	¹⁷ Proposed Depth 4600'	¹⁸ Formation San Andres	¹⁹ Contractor Key Energy	²⁰ Spud Date February, 2000

²¹ Proposed Casing and Cement Program					
Hole Size	Casing Size	Casing weight/foot	Setting Depth	Sacks of Cement	Estimated TOC
18	14	Conductor	40	50	Surface
12-1/4	8-5/8	24	1650	795	Surface
7-7/8	5-1/2	15.5	4600	800	Surface

²² Describe the proposed program. If this application is to DEEPEN or PLUG BACK give the data on the present productive zone and proposed new productive zone. Describe the blowout prevention program, if any. Use additional sheets if necessary

See attached for proposed drilling program
BOP Program 3000# Ram Preventer

²³ I hereby certify that the information given above is true and complete to the best of my knowledge and belief.

Signature: *Mark Stephens*
Printed name: **Mark Stephens** (281) 552-1158
Title: **Business Analyst (SG)**

OIL CONSERVATION DIVISION	
Approved by: <i>William</i>	
Title: <i>SGP</i>	
Approval Date:	Expiration Date:

CTP

Proposed Drilling Program
North Hobbs G/SA Unit No. 29-624
Lea County, New Mexico

A 14" conductor will be set and cemented to surface with 50 sx. cement. A 12-1/4" hole will be drilled from surface to approximately 1650'. This will allow for protection of all water zones and casing off of the Red Beds. A full string of 8-5/8", 24#, J-55 surface casing will be run and set 25' into the top of the Rustler Anhydrite with cement circulated to surface. The cement will be allowed to set for a minimum of eight (8) hours (minimum 500# compressive strength) and will then be tested to 1500 psi for 30 minutes before drilling resumes. After the casing is run and cemented, weld on 8-5/8" X 11" 3M casinghead housing and nipple up BOP stack (3000# Ram Preventer).

A 7-7/8" hole will be drilled out from surface casing point (1650') to +/- 4400' TVD. A full string of 5-1/2", 15.5#, J-55 production casing will be run to TD and cemented to surface (casing test to 1500 psi will be done by the completion rig).

DISTRICT I
P.O. Box 1980, Hobbs, NM 88241-1980

DISTRICT II
P.O. Drawer DD, Artesia, NM 88211-0719

DISTRICT III
1000 Rio Brazos Rd., Aztec, NM 87410

DISTRICT IV
P.O. BOX 2088, SANTA FE, N.M. 87504-2088

State of New Mexico
Energy, Minerals and Natural Resources Department

Form C-102
Revised February 10, 1994
Submit to Appropriate District Office
State Lease - 4 Copies
Fee Lease - 3 Copies

OIL CONSERVATION DIVISION

P.O. Box 2088
Santa Fe, New Mexico 87504-2088

AMENDED REPORT

WELL LOCATION AND ACREAGE DEDICATION PLAT

API Number 30-025-34870	Pool Code 31920	Pool Name Hobbs; Grayburg - San Andres
Property Code 19520	Property Name NORTH HOBBS G/SA Unit	Well Number 624
GRID No. 157984	Operator Name ALTURA ENERGY LTD.	Elevation 3644

Surface Location

UL or lot No. N	Section 29	Township 18 S	Range 38 E	Lot Idn	Feet from the 1150	North/South line SOUTH	Feet from the 1948	East/West line WEST	County LEA
---------------------------	----------------------	-------------------------	----------------------	---------	------------------------------	----------------------------------	------------------------------	-------------------------------	----------------------

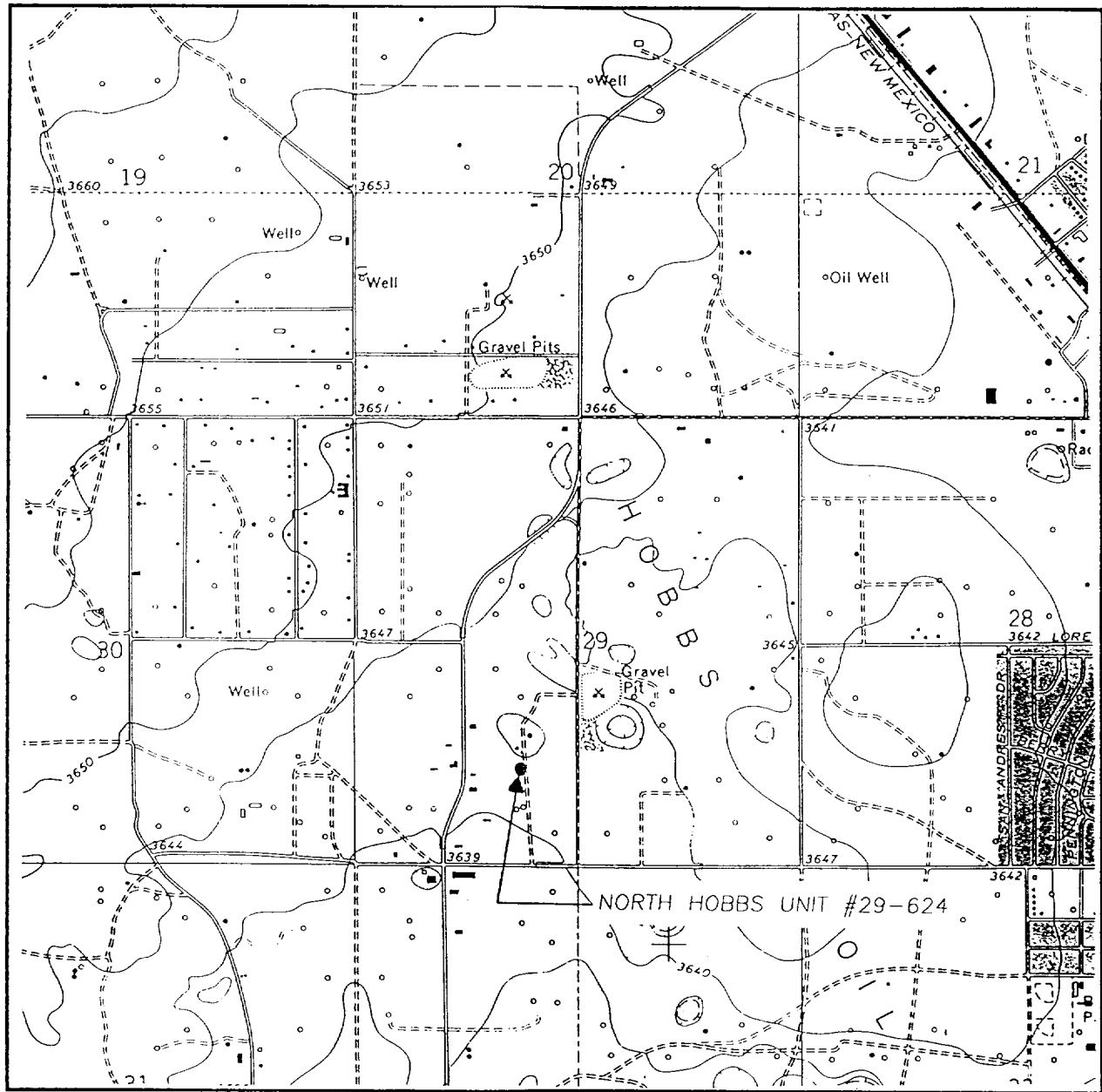
Bottom Hole Location If Different From Surface

UL or lot No.	Section	Township	Range	Lot Idn	Feet from the	North/South line	Feet from the	East/West line	County
Dedicated Acres 40	Joint or Infill I	Consolidation Code U	Order No.						

NO ALLOWABLE WILL BE ASSIGNED TO THIS COMPLETION UNTIL ALL INTERESTS HAVE BEEN CONSOLIDATED
OR A NON-STANDARD UNIT HAS BEEN APPROVED BY THE DIVISION

<p>SPC NME NAD 1927 N=625472 E=857069</p> <p>1948'</p> <p>1150'</p>	<p>OPERATOR CERTIFICATION</p> <p>I hereby certify the the information contained herein is true and complete to the best of my knowledge and belief.</p> <p><i>Mark Stephens</i> Signature Mark Stephens Printed Name Business Analyst (SG) Title January 17, 2000 Date</p>	
	<p>SURVEYOR CERTIFICATION</p> <p>I hereby certify that the well location shown on this plat was plotted from field notes of actual surveys made by me or under my supervision, and that the same is true and correct to the best of my belief.</p> <p>JANUARY 12, 2000 Date Surveyed Signature & Seal of Professional Surveyor <i>Gary E. Eidsen</i> 99-11-39 Certificate No. RONALD EIDSON 3239 MICHAEL EIDSON 12641 NAGOR McDONALD 12185</p>	

LOCATION VERIFICATION MAP



SCALE: 1" = 2000'

CONTOUR INTERVAL:
HOBBS WEST - 5'

SEC. 29 TWP. 18-S. RGE. 38-E

SURVEY N.M.P.M.

COUNTY LEA

DESCRIPTION 1150' FSL & 1948' FWL

ELEVATION 3544

OPERATOR ALTURA ENERGY LTD.

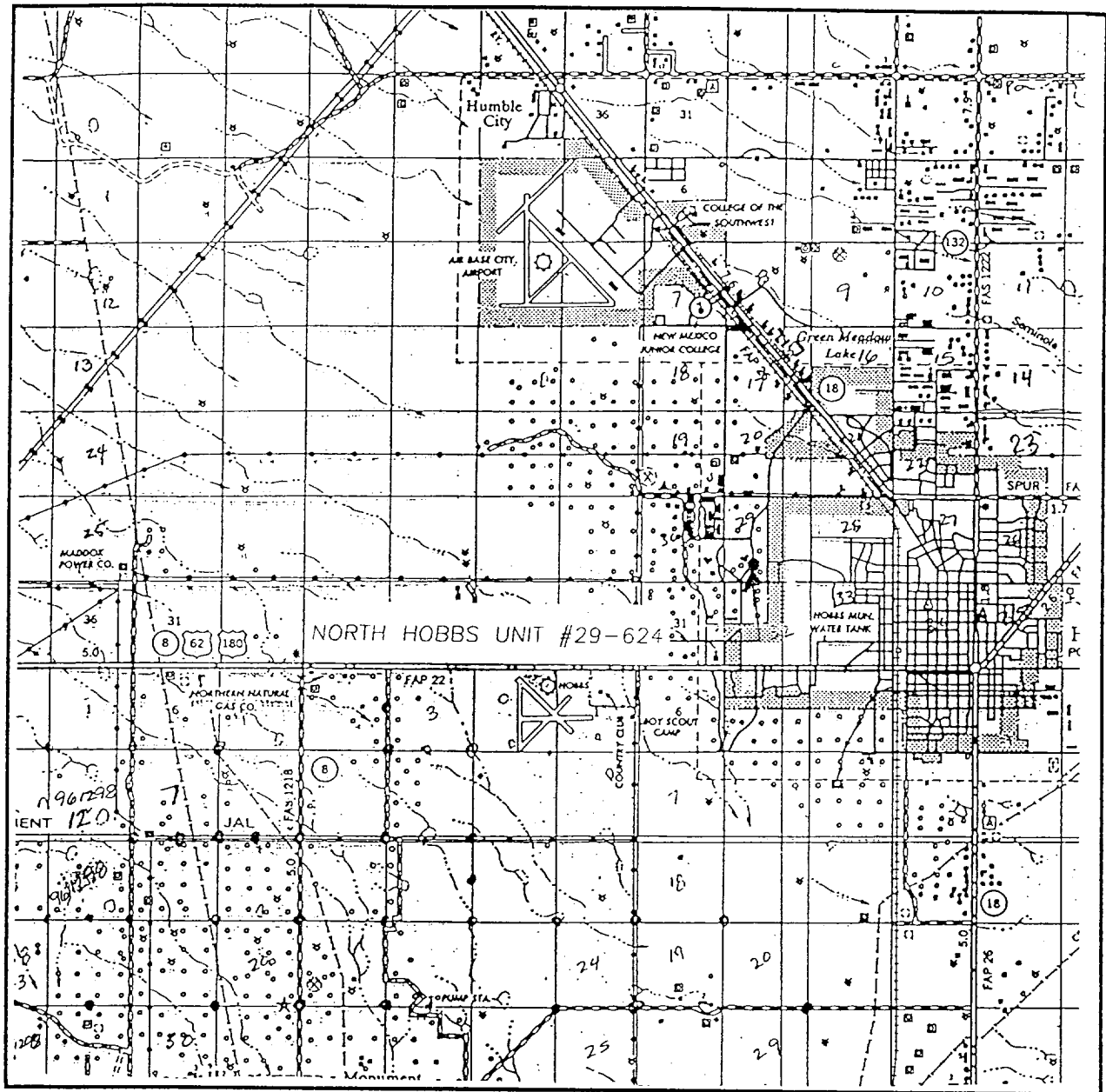
LEASE NORTH HOBBS UNIT

U.S.G.S. TOPOGRAPHIC MAP

HOBBS WEST, N.M.

JOHN WEST SURVEYING
HOBBS, NEW MEXICO
(505 393-3117)

VICINITY MAP



SCALE: 1" = 2 MILES

SEC. 29 TWP. 18-S RGE. 38-E

SURVEY N.M.P.M.

COUNTY LEA

DESCRIPTION 1150' FSL & 1948' FWL

ELEVATION 3644

OPERATOR ALTURA ENERGY LTD.

LEASE NORTH HOBBS UNIT

JOHN WEST SURVEYING
HOBBS, NEW MEXICO
(505 393-3117)

ABOVE DATE DOES NOT
INDICATE WHEN
CONFIDENTIAL LOGS
WILL BE RELEASED

ELF

2/8/82