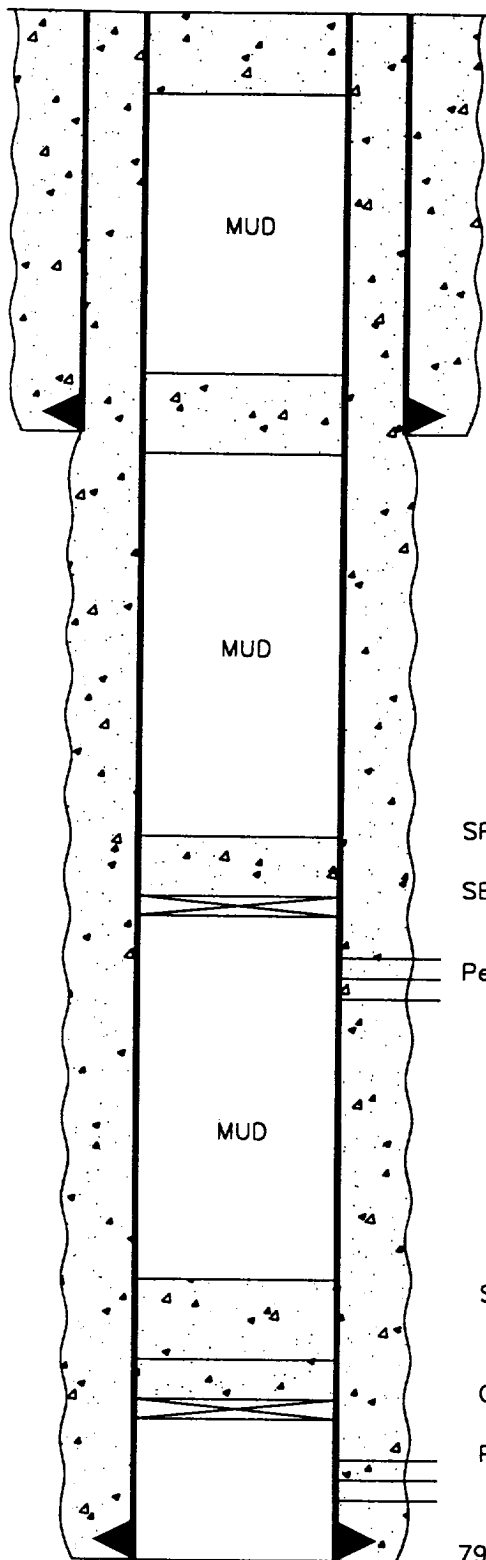


PROPOSED PLUG AND ABANDONMENT

8/22/00

Elev. = 3742' GR +11' KB



SPOT 10 SXS CEMENT SURFACE PLUG

SPOT 25 SXS CEMENT 1525'-1775'

1650' - 8 5/8" Casing. Cemented w/795 sxs. Circulated to Surface

SPOT 25 SXS CEMENT ON TOP OF C.I.B.P.

SET A C.I.B.P. @ 3500'

Perfs 3564'-3642'

SPOT 25 SXS CEMENT 5160'-5410'

C.I.B.P. @ 5435' w/25' Cement

Perfs 5506'-5572'

7927' - 5 1/2", 17#, Casing. Cemented w/1865 sxs. Circulated.

T.D. @ 7927'

CONOCO, INC.

State B-19 #2

2275' FNL & 1215' FEL

Sec. 19, T-18S, R-37E

Lea County, NM