

New Mexico Oil Conservation Act
UNITED STATES
DEPARTMENT OF THE INTERIOR
BUREAU OF LAND MANAGEMENT

SUBMIT IN DUPLICATE

(See other instructions on reverse side)

FORM APPROVED
OMB NO. 1004-0137
Expires: February 28, 1995

5. LEASE DESIGNATION AND SERIAL NO.
NM-038690

6. IF INDIAN, ALLOTTEE OR TRIBE NAME

7. UNIT AGREEMENT NAME

8. FARM OR LEASE NAME, WELL NO.
LUSK DEEP UNIT A COM #16

9. API WELL NO.

30-025-35053

10. FIELD AND POOL, OR WILDCAT
LUSK ATOKA

11. SEC., T., R., M., OR BLOCK AND SURVEY
OR AREA

SEC. 18-T19S-R32E

12. COUNTY OR PARISH
LEA

13. STATE
NM

1a. TYPE OF WELL: OIL WELL GAS WELL ☒ DRY Other
b. TYPE OF COMPLETION: NEW WELL WORK OVER DEEP-EN PLUG BACK ☒ DIFF. RESVR. Other
2. NAME OF OPERATOR
MARBOB ENERGY CORPORATION
3. ADDRESS AND TELEPHONE NO.
PO BOX 227, ARTESIA, NM 88210
4. LOCATION OF WELL (Report location clearly and in accordance with any State requirements*)
At surface
785 FSL 660 FWL
At top prod. interval reported below
SAME
At total depth
SAME
14. PERMIT NO. DATE ISSUED

15. DATE SPUDDED 06/15/00 16. DATE T.D. REACHED 07/27/00 17. DATE COMPL. (Ready to prod.) 09/15/00 18. ELEVATIONS (DF, RKB, RT, GE, ETC.)* 3578' GR 19. ELEV. CASINGHEAD

20. TOTAL DEPTH, MD & TVD 12780' 21. PLUG, BACK T.D., MD & TVD 12100' 22. IF MULTIPLE COMPL., HOW MANY* 2 23. INTERVALS DRILLED BY 0-12780' ROTARY TOOLS CABLE TOOLS

24. PRODUCING INTERVAL(S), OF THIS COMPLETION-TOP, BOTTOM, NAME (MD AND TVD)*
11692-11696' ATOKA

25. WAS DIRECTIONAL SURVEY MADE
No

26. TYPE ELECTRIC AND OTHER LOGS RUN
DLL, CSNG

27. WAS WELL CORED
No

28. CASING RECORD (Report all strings set in well)

CASING SIZE/GRADE	WEIGHT, LB./FT.	DEPTH SET (MD)	HOLE SIZE	TOP OF CEMENT, CEMENTING RECORD	AMOUNT PULLED
13 3/8" H40	48#	804'	17 1/2"	650 SX	CIRC 170 SX
8 5/8" J55	24#	4520'	12 1/4"	2535 SX	CIRC
5 1/2" J55	17#	12751'	7 7/8"	1850 SX	CIRC 130 SX

29. LINER RECORD

SIZE	TOP (MD)	BOTTOM (MD)	SACKS CEMENT*	SCREEN (MD)	SIZE	DEPTH SET (MD)	PACKER SET (MD)
					2 3/8"	11572'	

31. PERFORATION RECORD (Interval, size and number)
11692 - 11696' (30 SHCTS)

32. ACID, SHOT, FRACTURE, CEMENT SQUEEZE, ETC.
DEPTH INTERVAL (MD) AMOUNT AND KIND OF MATERIAL USED

33. PRODUCTION

DATE FIRST PRODUCTION	PRODUCTION METHOD (Flowing, gas lift, pumping--size and type of pump)	WELL STATUS (Producing or shut-in)					
06/29/01	FLOWING	PROD					
DATE OF TEST	HOURS TESTED	CHOKE SIZE	PROD'N FOR TEST PERIOD	OIL---BBL.	GAS---MCF.	WATER---BBL.	GAS-OIL RATIO
06/30/01	24			10	407	0	
FLOW. TUBING PRESS.	CASING PRESSURE	CALCULATED 24-HOUR RATE	OIL---BBL.	GAS---MCF.	WATER---BBL.	OIL GRAVITY-API (CORR.)	
2200							

34. DISPOSITION OF GAS (Sold, used for fuel, vented, etc.)
SOLD

35. LIST OF ATTACHMENTS

36. I hereby certify that the foregoing and attached information is complete and correct as determined from all available records

SIGNED *David R. Glass* TITLE PRODUCTION ANALYST

DATE 07/03/01

*(See Instructions and Spaces for Additional Data on Reverse Side)

ACCEPTED FOR RECORD
(ORIG. SGD.) DAVID R. GLASS
JUL 5 2001
DAVID R. GLASS
PRODUCTION ANALYST

TEST WITNESSED BY
SHANE GRAY

Title 18 U.S.C. Section 1001, makes it a crime for any person knowingly and willfully to make to any department or agency of the United States any false, fictitious or fraudulent statements or representations as to any matter within its jurisdiction.

BUREAU OF LAND MGMT
ROSSELL OFFICE

2001 JUL - 5 AM 10: 21

RECEIVED

RECEIVED
JUL 2001
Hobbs

37. SUMMARY OF POROUS ZONES: (Show all important zones of porosity and contents thereof; cored intervals; and all drill-stem tests, including depth interval tested, cushion used, time tool open, flowing and shut-in pressures, and recoveries):

FORMATION	TOP	BOTTOM	DESCRIPTION, CONTENTS, ETC.
-----------	-----	--------	-----------------------------

38. GEOLOGICAL MARKERS

NAME	TOP	
	MEAS. DEPTH	TRUE VERT. DEPTH
RUSTLER	690'	
YATES	2550'	
DELAWARE	4585'	
BONE SPRINGS	6975'	
WOLFCAMP	10387'	
STRAWN	11130'	
ATOKA SHALE	11533'	
MORROW	12102'	

38. GEOLOGICAL MARKERS

NAME	TOP	
	MEAS. DEPTH	TRUE VERT. DEPTH

BUREAU OF LAND MGMT
ROSWEILL OFFICE

2001 JUL - 5 AM 10: 21

RECEIVED

RECEIVED
JUL 5 2001
BUREAU OF LAND MGMT
ROSWEILL OFFICE

DISTRICT II
P.O. Drawer 88, Artesia, NM 88211-9719

DISTRICT III
1000 Rio Brazos Rd., Aztec, NM 87410

DISTRICT IV
P.O. Box 2088, Santa Fe, N.M. 87504-2088

OIL CONSERVATION DIVISION
P.O. Box 2088
Santa Fe, New Mexico 87504-2088

☐ AMENDED REPORT

WELL LOCATION AND ACREAGE DEDICATION PLAT

API Number 30-025-35053	Pool Code 80740	Pool Name LUSK ATOKA
Property Code 17824	Property Name LUSK DEEP UNIT A COM	Well Number 16
OCRID No. 14049	Operator Name MARBOB ENERGY CORPORATION	Elevation 3578

Surface Location

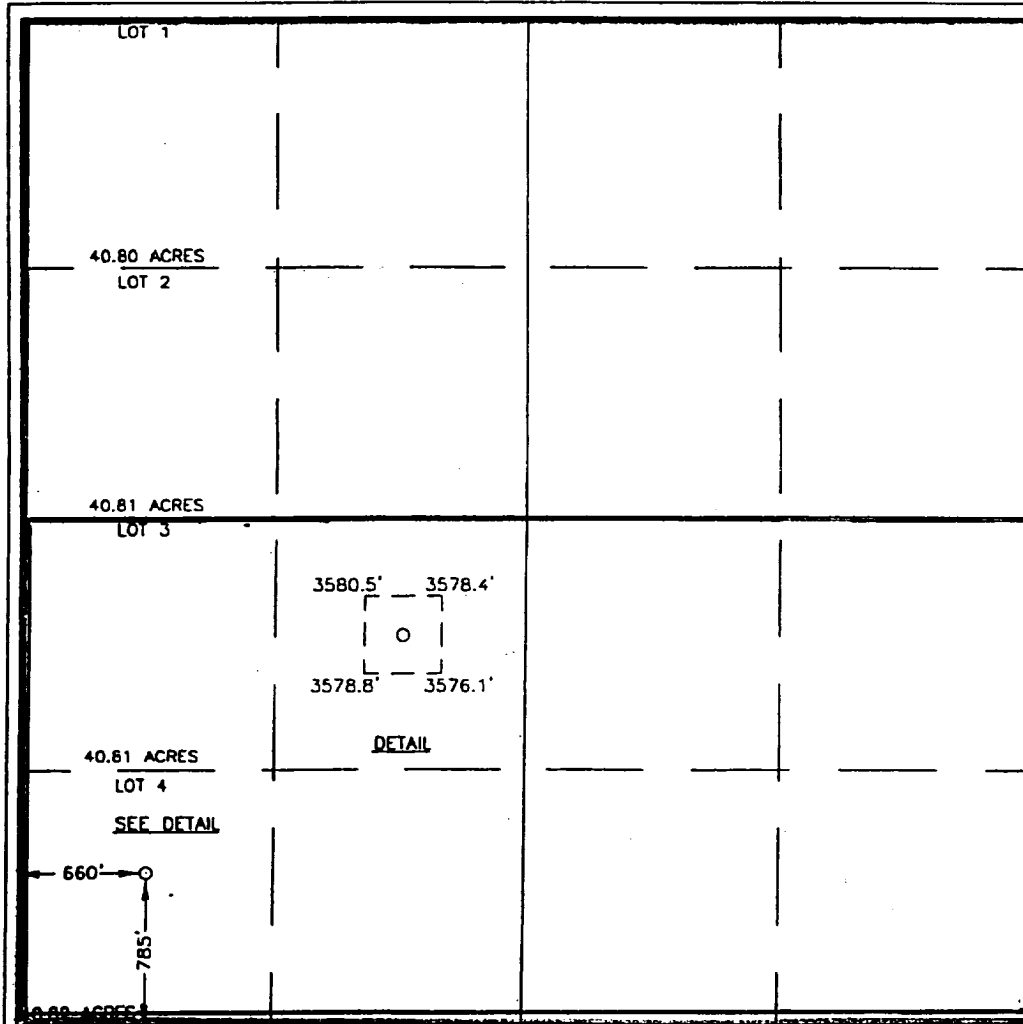
UL or lot No. LOT 4	Section 18	Township 19 S	Range 32 E	Lot Idn	Feet from the 785	North/South line SOUTH	Feet from the 660	East/West line WEST	County LEA
------------------------	---------------	------------------	---------------	---------	----------------------	---------------------------	----------------------	------------------------	---------------

Bottom Hole Location If Different From Surface

UL or lot No.	Section	Township	Range	Lot Idn	Feet from the	North/South line	Feet from the	East/West line	County
---------------	---------	----------	-------	---------	---------------	------------------	---------------	----------------	--------

Dedicated Acres 320	Joint or Infill	Consolidation Code	Order No.
------------------------	-----------------	--------------------	-----------

NO ALLOWABLE WILL BE ASSIGNED TO THIS COMPLETION UNTIL ALL INTERESTS HAVE BEEN CONSOLIDATED
OR A NON-STANDARD UNIT HAS BEEN APPROVED BY THE DIVISION



OPERATOR CERTIFICATION

I hereby certify the the information contained herein is true and complete to the best of my knowledge and belief.

Diana J. Cannon
Signature

DIANA J. CANNON
Printed Name
PRODUCTION ANALYST
Title

JULY 6, 2001
Date

SURVEYOR CERTIFICATION

I hereby certify that the well location shown on this plat was plotted from field notes of actual surveys made by me or under my supervision, and that the same is true and correct to the best of my belief.

APRIL 27, 2000

Date Surveyed
Signature & Seal of Professional Surveyor

Ronald J. Edson 4/28/00
06-11-0542

Certificate No. RONALD J. EDSON 3239
GARY EDSON 12641
MACON McDONALD 12155