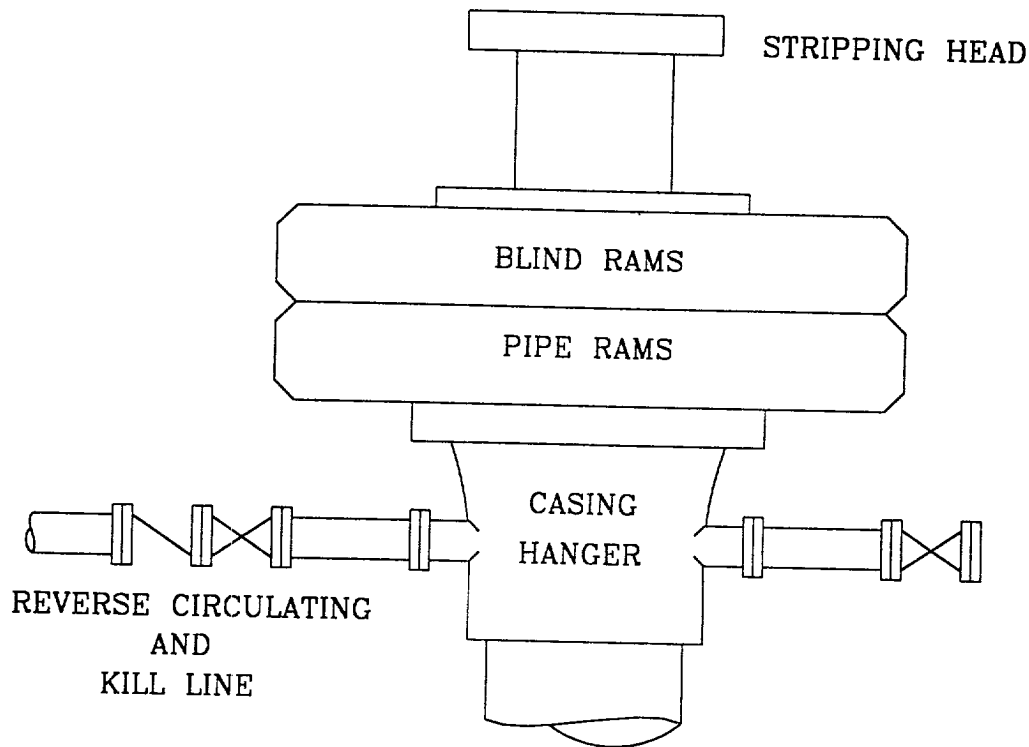
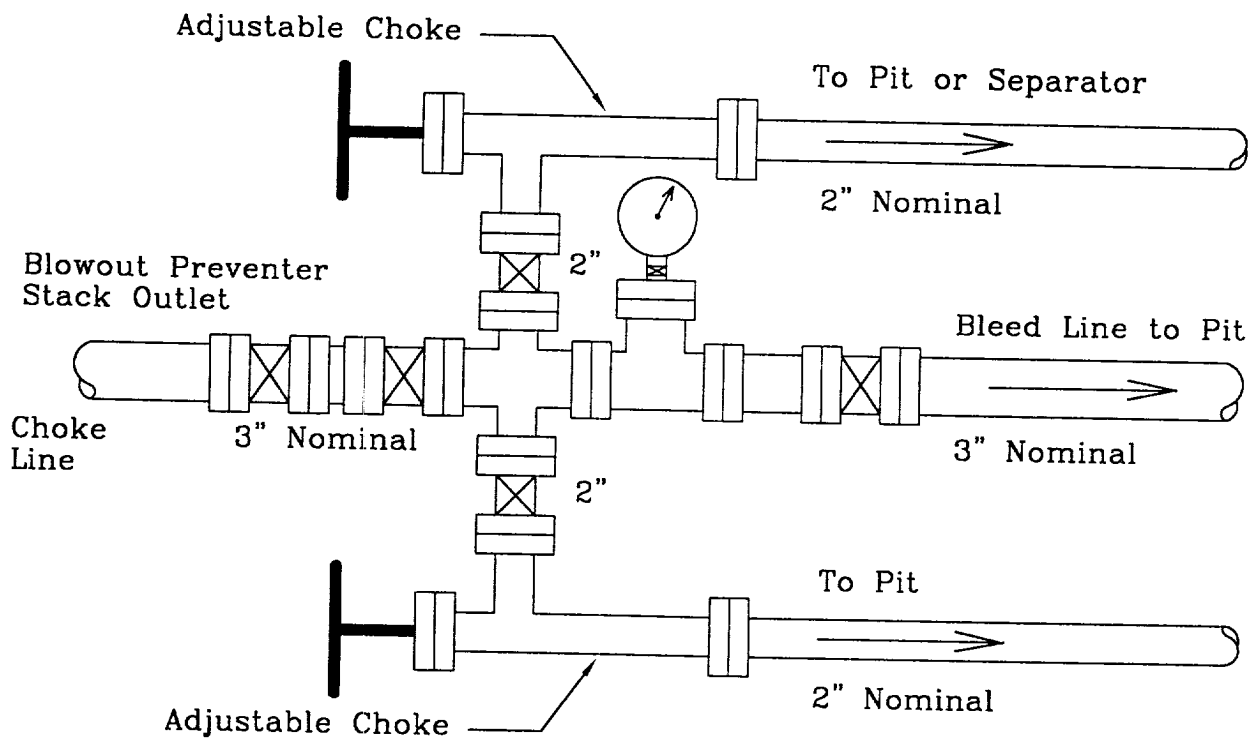


IN. RMEDIATE HOLE SECTION



3000 PSI WORKING PRESSURE



3000 PSI WORKING PRESSURE

Location: SW/4 SE/4 Sec. 31, T-18S, R-32E Lea County, NM	LUSK 31 FEDERAL #1 BLOWOUT PREVENTER AND CHOKE MANIFOLD	EXHIBIT NO. 1 Scale: None	6/5/00
--	--	------------------------------	--------