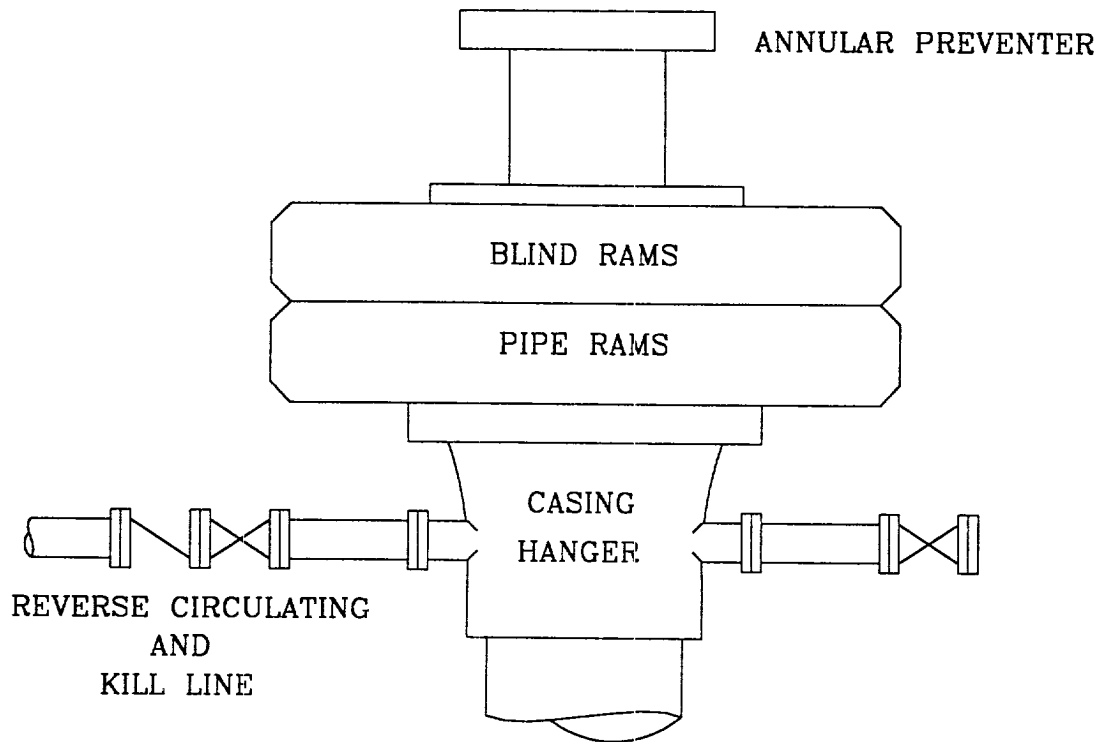
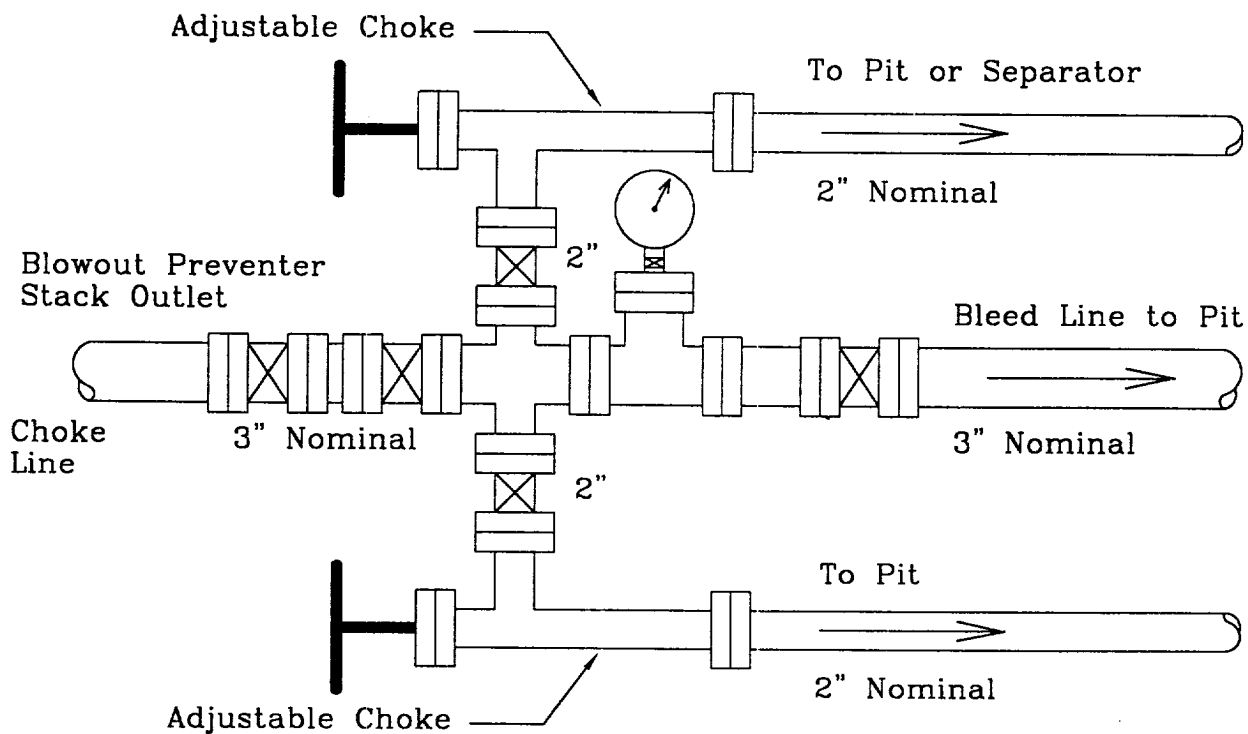


# PRODUCTION HOLE SECTION



5000 PSI WORKING PRESSURE



5000 PSI WORKING PRESSURE

<p>Location: SW/4 SE/4 Sec. 31, T-18S, R-32E Lea County, NM</p>	<p>LUSK 31 FEDERAL #1 BLOWOUT PREVENTER AND CHOKE MANIFOLD</p>	<p>EXHIBIT NO. 1 Scale: None</p>	<p>6/5/00</p>
---	--	--------------------------------------	---------------