

DISTRICT I
1625 N. French Dr., Hobbs, NM 88240

DISTRICT II
511 South First, Artesia, NM 88210

DISTRICT III
1000 Rio Brazos Ed., Artesia, NM 87410

DISTRICT IV
2040 South Pacheco, Santa Fe, NM 87505

State of New Mexico
Energy, Minerals and Natural Resources Department

Form C-102
Revised March 17, 1999

Submit to Appropriate District Office
State Lease - 4 Copies
Fee Lease - 3 Copies

OIL CONSERVATION DIVISION

2040 South Pacheco
Santa Fe, New Mexico 87504-2088

☐ AMENDED REPORT

WELL LOCATION AND ACREAGE DEDICATION PLAT

API Number 30-025-35073	Pool Code 80800	Pool Name LUSK; MORROW, NORTH (GAS)
Property Code 26009	Property Name LUSK FEDERAL Com	Well Number 1
OCRID No. 013645	Operator Name LYNX PETROLEUM	Elevation 3674'

Surface Location

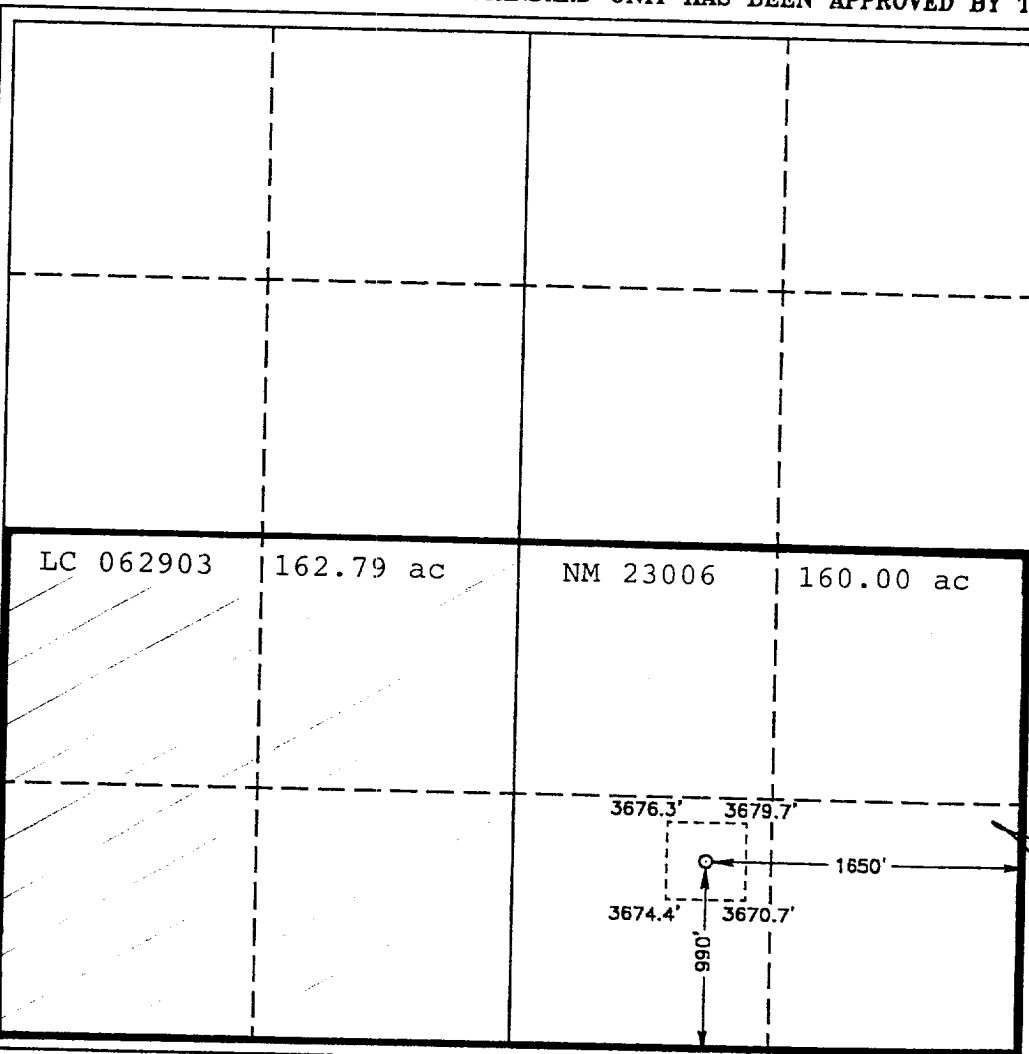
UL or lot No. 0	Section 31	Township 18 S	Range 32 E	Lot Idn	Feet from the 990	North/South line SOUTH	Feet from the 1650	East/West line EAST	County LEA
---------------------------	----------------------	-------------------------	----------------------	---------	-----------------------------	----------------------------------	------------------------------	-------------------------------	----------------------

Bottom Hole Location If Different From Surface

UL or lot No.	Section	Township	Range	Lot Idn	Feet from the	North/South line	Feet from the	East/West line	County
---------------	---------	----------	-------	---------	---------------	------------------	---------------	----------------	--------

Dedicated Acres 322.79	Joint or Infill N	Consolidation Code C	Order No. Pending
----------------------------------	-----------------------------	--------------------------------	-----------------------------

NO ALLOWABLE WILL BE ASSIGNED TO THIS COMPLETION UNTIL ALL INTERESTS HAVE BEEN CONSOLIDATED
OR A NON-STANDARD UNIT HAS BEEN APPROVED BY THE DIVISION



OPERATOR CERTIFICATION

I hereby certify that the information contained herein is true and complete to the best of my knowledge and belief.

Marc Wise
Signature
Marc Wise
Printed Name
President
Title
6/5/00
Date

SURVEYOR CERTIFICATION

I hereby certify that the well location shown on this plat was plotted from field notes of actual surveys made by me or under my supervision and that the same is true and correct to the best of my belief.

February 17, 2000
Date Surveyed
GEORGE L. JONES
Signature
PROFESSIONAL SURVEYOR
Professional Seal
NO. 008
Certificate No.
7977
BASIN SURVEYS