



United States Department of the Interior
BUREAU OF LAND MANAGEMENT

Carlsbad Field Office
620 E. Greene St.
Carlsbad, New Mexico 88220
Tel. (505) 234-5972
Fax (505) 885-9264

IN REPLY REFER TO:

3162.4 (080)
LC-028992-E, LC-029548-A,
NM-0467932, NM-12413,
NM-12115

AUG 09 2002

Marbob Energy Corporation
P. O. Box 227
Artesia, NM 88211-0227

Gentlemen:

Your Applications for Permit to Drill (APDs), for the following wells have expired because drilling has not commenced within one year of the approval date as stated in the General Requirements for Oil and Gas Operations on Federal Leases.

LC-028992-E Brett Federal #4 330'S & 2310'E Sec. 23, T.17S, R.30E
APD approved on 12/14/98, last approved extension expired on 12/14/01

LC-029548-A Coffee Federal #8 990'N & 1650'E Sec. 18, T.17S, R.31E
APD approved on 05/03/00, last approved extension expired on 05/03/02

NM-0467932 E. L. Federal #6 1650'S & 965'E Sec. 21, T.17S, R.30E
APD approved on 05/22/98, last approved extension expired on 05/22/02

NM-12413 W.E.B. Federal #2 660'S & 1980'W Sec. 24, T.19S, R.32E
APD approved on 02/26/01

NM-12115 W.E.B. Federal #1 990'N & 660'W Sec. 24, T.19S, R.32E
APD approved on 02/26/01

If drilling operations have commenced on the referenced wells, please contact this office at (505) 234-5972 and send all necessary reports (spud, casing/cementing, etc., 1 original and 5 copies for each well) to the Roswell Field Office, 2909 West Second Street, Roswell, New Mexico 88202, so we may correct our records.

If the wells have not been spudded, but site construction activities have occurred, please contact this office at the above telephone number for surface reclamation instructions.

VOID
30-025-35436

AUG 15 2002

If you wish to drill these wells at a later date, please submit a complete application (1 original and 5 copies for each well) to the Roswell Field Office. Since the original APDs have expired, the resubmitted APDs will be subject to all the processing requirements including the 30-day posting requirement. Please note on the resubmitted APDs that they were previously approved and we will review the expired files for information which will help expedite the processing. If you have any questions please contact Joe Lara at (505) 234-5915 or Betty Hill at (505) 234-5937.

Sincerely,

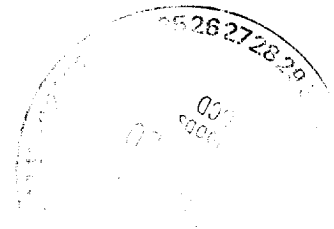
/S/ MARIA KETSON



Mary Jo Rugwell
Assistant Field Manager
Lands & Minerals

bcc:

BLM-I&E (CFO/Hobbs)
NMOCD (Artesia/Hobbs)
NM (062, L Askwig)



UNITED STATES
DEPARTMENT OF THE INTERIOR
BUREAU OF LAND MANAGEMENT

SUBMIT IN TRIPLICATE*
(Other instructions on
reverse side)

FORM APPROVED
OMB NO. 1004-0136
Expires: February 28, 1995

APPLICATION FOR PERMIT TO DRILL OR DEEPEN

1a. TYPE OF WORK DRILL <input checked="" type="checkbox"/> DEEPEN <input type="checkbox"/>			5. LEASE DESIGNATION AND SERIAL NO. LC42115 12413	
b. TYPE OF WELL OIL WELL <input type="checkbox"/> GAS WELL <input checked="" type="checkbox"/> OTHER <input type="checkbox"/> SINGLE ZONE <input type="checkbox"/> MULTIPLE ZONE <input type="checkbox"/>			6. IF INDIAN, ALLOTTEE OR TRIBE NAME	
2. NAME OF OPERATOR MARBOB ENERGY CORPORATION			7. UNIT AGREEMENT NAME	
3. ADDRESS AND TELEPHONE NO. P.O. BOX 227, ARTESIA, NM 88210 505-748-3303			8. FARM OR LEASE NAME, WELL NO. W.E.B. FEDERAL #2	
4. LOCATION OF WELL (Report location clearly and in accordance with any State requirements.) At surface 660 FSL 1980 FWL At proposed prod. zone N SAME			9. API WELL NO. 30-025-35436	
14. DISTANCE IN MILES AND DIRECTION FROM NEAREST TOWN OR POST OFFICE* SEE SURFACE USE PLAN			10. FIELD AND POOL, OR WILDCAT LUSK, MORROW, EAST	
15. DISTANCE FROM PROPOSED* LOCATION TO NEAREST PROPERTY OR LEASE LINE, FT (Also to nearest drig. unit line, if any) 660'			11. SEC., T., R., M., OR BLK. AND SURVEY OR AREA SEC. 24-T19S-R32E	
16. NO. OF ACRES IN LEASE 160			12. COUNTY OR PARISH LEA	
17. NO. OF ACRES ASSIGNED TO THIS WELL 320			13. STATE NM	
18. DISTANCE FROM PROPOSED LOCATION* TO NEAREST WELL, DRILLING, COMPLETED, OR APPLIED FOR, ON THIS LEASE, FT. 14,000'			20. ROTARY OR CABLE TOOLS ROTARY	
21. ELEVATIONS (Show whether DF, RT, GR, etc.) 3598' GR			22. APPROX. DATE WORK WILL START* 01/28/01	

23. PROPOSED CASING AND CEMENTING PROGRAM				
SIZE OF HOLE	GRADE, SIZE OF CASING	WEIGHT PER FOOT	SETTING DEPTH	QUANTITY OF CEMENT
17 1/2"	H-40, 13 3/8"	48#	1150'	650 SX, CIRC
12 1/4"	J-55, 8 5/8"	24#	5000'	2200 SX, CIRC
7 7/8"	P-110, 5 1/2"	17#	14,000'	

SUFFICIENT TO COVER 200' ABOVE ALL KNOWN O&G HORIZONS
Capitan Corralito

PAY ZONE WILL BE SELECTIVELY PERFORATED AND STIMULATED AS NEEDED FOR OPTIMUM PRODUCTION.

ATTACHED ARE: 1. LOCATION & ACREAGE DEDICATION PLAT
2. SUPPLEMENTAL DRILLING DATA
3. SURFACE USE PLAN

OPER. OGRID NO. **14049**
PROPERTY NO. **27067**
DATE **80770**
DATE **3-1-01**
API NO. **30-025-35436**

ORIGINAL SIGNED BY
ORIGINAL PERMITS AND
SPECIAL STIPULATIONS
ATTACHED

IN ABOVE SPACE DESCRIBE PROGRAM: If proposal is to deepen, give data on present productive zone and proposed new productive zone. If proposal is to drill or deepen directionally, give pertinent data on subsurface locations and measured and true vertical depths. Give blowout preventer program, if any.

24. SIGNED **Robin Cockrum** TITLE **PRODUCTION ANALYST** DATE **12/29/00**

(This space for Federal or State office use)

ORIGINAL SIGNED BY **CHRIS WILLIAMS**
PERMIT NO. **DISTRICT SUPERVISOR**

APPROVAL DATE **MAR 01 2001**

Application approval does not warrant or certify that the applicant holds legal or equitable title to those rights in the subject lease which would entitle the applicant to conduct operations thereon.
CONDITIONS OF APPROVAL, IF ANY:

APPROVED BY

TITLE

DATE

*See Instructions On Reverse Side

Title 18 U.S.C. Section 1001, makes it a crime for any person knowingly and willfully to make to any department or agency of the United States any false, fictitious or fraudulent statements or representations as to any matter within its jurisdiction.

DISTRICT II
P.O. Drawer DD, Artesia, NM 88211-0719

DISTRICT III
1000 Rio Brazos Rd., Aztec, NM 87410

DISTRICT IV
P.O. BOX 2088, SANTA FE, N.M. 87504-2088

OIL CONSERVATION DIVISION

P.O. Box 2088
Santa Fe, New Mexico 87504-2088

☐ AMENDED REPORT

WELL LOCATION AND ACREAGE DEDICATION PLAT

API Number 30-025-35436	Pool Code 80770	Pool Name Lusk, MORROW, East
Property Code 27067	Property Name W.E.B. FEDERAL	Well Number 2
OGRID No. 14049	Operator Name MARBOB ENERGY CORPORATION	Elevation 3598

Surface Location

UL or lot No.	Section	Township	Range	Lot Idn	Feet from the	North/South line	Feet from the	East/West line	County
N	24	19-S	32-E		660	SOUTH	1980	WEST	LEA

Bottom Hole Location If Different From Surface

UL or lot No.	Section	Township	Range	Lot Idn	Feet from the	North/South line	Feet from the	East/West line	County
Dedicated Acres 320	Joint or Infill	Consolidation Code	Order No.						

NO ALLOWABLE WILL BE ASSIGNED TO THIS COMPLETION UNTIL ALL INTERESTS HAVE BEEN CONSOLIDATED
OR A NON-STANDARD UNIT HAS BEEN APPROVED BY THE DIVISION

OPERATOR CERTIFICATION			
<i>I hereby certify the information contained herein is true and complete to the best of my knowledge and belief.</i>			
<u>Robin Cockrum</u> Signature			
<u>ROBIN COCKRUM</u> Printed Name			
<u>PRODUCTION ANALYST</u> Title			
<u>12/29/00</u> Date			
SURVEYOR CERTIFICATION			
<i>I hereby certify that the well location shown on this plot was plotted from field notes of actual surveys made by me or under my supervision, and that the same is true and correct to the best of my belief.</i>			
<u>DECEMBER 12, 2000</u> Date Surveyed			
AWB			
<u>Gary E. Edson</u> Signature & Seal of Professional Surveyor			
<u>12/19/00</u> 00-11-1588			
Certificate No. <u>RONALD J. EDSON 3239</u> <u>GARY EIDSON 12641</u>			

DRILLING PROGRAM

Attached to Form 3160-3
Marbob Energy Corporation
W.E.B. Federal No. 2
660' FSL and 1980' FWL
Section 24-19S-32E
Lea County, New Mexico

1. Geologic Name of Surface Formation:

Permian

2. Estimated Tops of Important Geologic Markers:

Permian	Surface	Delaware Sd.	5010'
Anhy.	1115'	Bone Springs	7690'
Tansill	2700'	Wolfcamp	10,940'
Yates	2980'	Strawn	12,130'
Seven Rivers	3200'	Atoka	12,540'
		Morrow	13,220'

3. Estimated Depths of Anticipated Fresh Water, Oil or Gas:

Yates	2980'	Oil
Delaware	5010'	Oil
Bone Spring	7690'	Oil
Strawn	12,130'	Oil
Morrow	13,220'	Gas

No other formations are expected to give up oil, gas, or fresh water in measurable quantities. The surface fresh water sands will be protected by setting 13 3/8 casing at 800' and circulating cement back to surface. Any shallower zones above TD which contain commercial quantities of oil and/or gas will have cement circulated across them by inserting a float show joint into the 13 3/8 production casing which will be run at TD.

DRILLING PROGRAM

PAGE 2

4. Casing Program:

<u>Hole Size</u>	<u>Interval</u>	<u>OD Casing</u>	<u>Wt, Grade, Jt. Cond, Type</u>
17 1/2	0-1150	13 3/8	48# H-40 STC
12 1/4	0-5000	8 5/8	32# J-55 Buttress
7 7/8	0-14000	5 1/2	17# P110 LTC

Cement Program:

13 3/8 Surface Casing: Cemented to surface with 650 sx of Class C w/2% cc.

8 5/8 Intermediate Casing: Cemented to surface with 2200 sx of Class C w/2% cc.

5 1/2 Production Casing: Cemented sufficient to cover 200' above all oil and gas horizons.

5. Minimum Specifications for Pressure Control:

The blowout preventer equipment (BOP) shown in Exhibit #1 will consist of a double ram-type preventer. This unit will be hydraulically operated and the ram-type preventer will be equipped with blind rams on top and 4-1/2" drill pipe rams on bottom. This BOP will be nipped up on the 13 3/8" surface casing and used continuously until TD is reached. All BOP's and accessory equipment will be tested to 3500 psi before drilling out of surface casing.

Pipe rams will be operationally checked each 24 hour period. Blind rams will be operationally checked on each trip out of the hole. These checks will be noted on the daily tour sheets. A 2" kill line and a 3" choke line will be included in the drilling spool located below the ram-type BOP. Other accessories to the BOP equipment will include a kelly cock and floor safety valve (inside BOP) and choke lines and choke manifold with 5000 psi WP rating.

6. Types and Characteristics of the Proposed Mud System:

The well will be drilled to TD with cut brine. The applicable depths and properties of this system are as follows:

DRILLING PROGRAM

PAGE 3

<u>Depth</u>	<u>Type</u>	<u>Weight</u>	<u>Viscosity</u>	<u>Waterloss</u>
0-1150	Fresh Water (Spud)	8.5	28	N.C.
1150 – 5000	Brine	9.8-10.2	40 - 45	N.C.
5000 - TD	Cut Brine	8.6-9.4	28 - 36	N.C. / 10cc

7. Auxiliary Well Control and Monitoring Equipment:

- A. A kelly cock will be kept in the drill string at all times.
- B. A full opening drill pipe stabbing valve (inside BOP) with proper drill pipe connections will be on the rig floor at all times.

8. Logging, Testing, and Coring Program:

- A. Drill Stem tests will be used as determined during drilling.
- B. The electric logging program will consist of Dual Laterolog Micro SFL, Spectral Density Dual Spaced Neutron Csg Log, and Depth Control Log.
- C. No conventional coring is anticipated.
- D. Further testing procedures will be determined after the 5 1/2" production casing has been cemented at TD based on drill shows, and log evaluation, and drill stem test results.

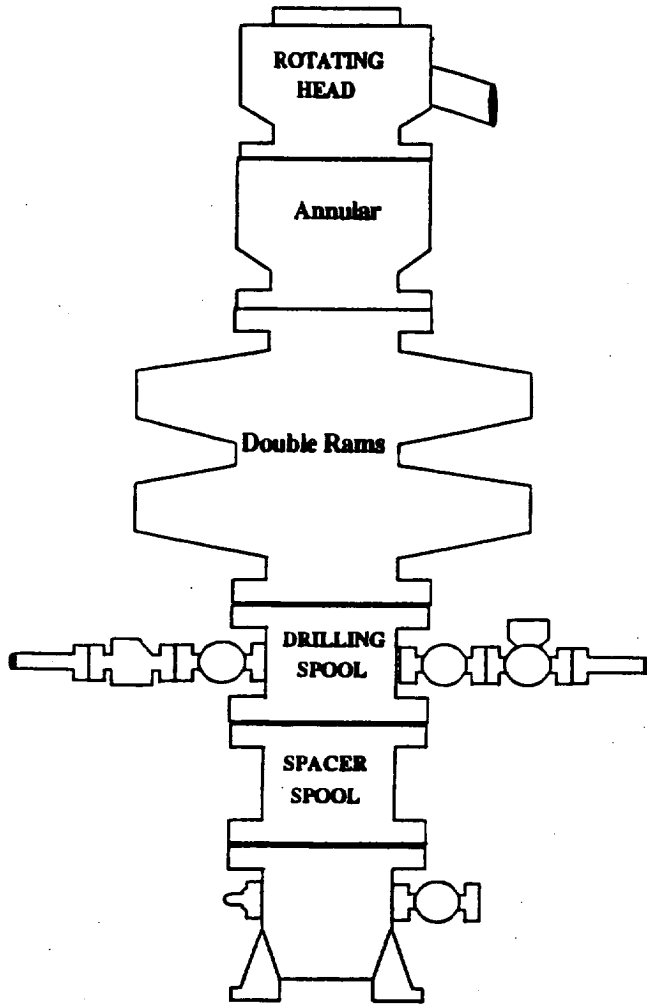
9. Abnormal Conditions, Pressures, Temperatures, and Potential Hazards:

No abnormal pressures or temperatures are anticipated. The estimated bottom hole temperature (BHT) at TD is 155° and estimated bottom hole pressure (BHP) is 4505 psig.

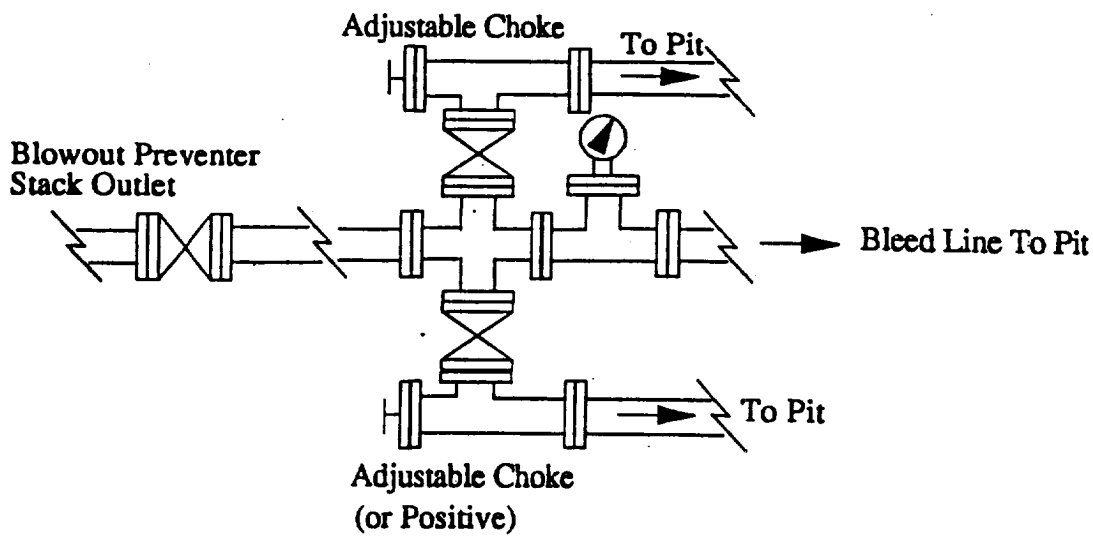
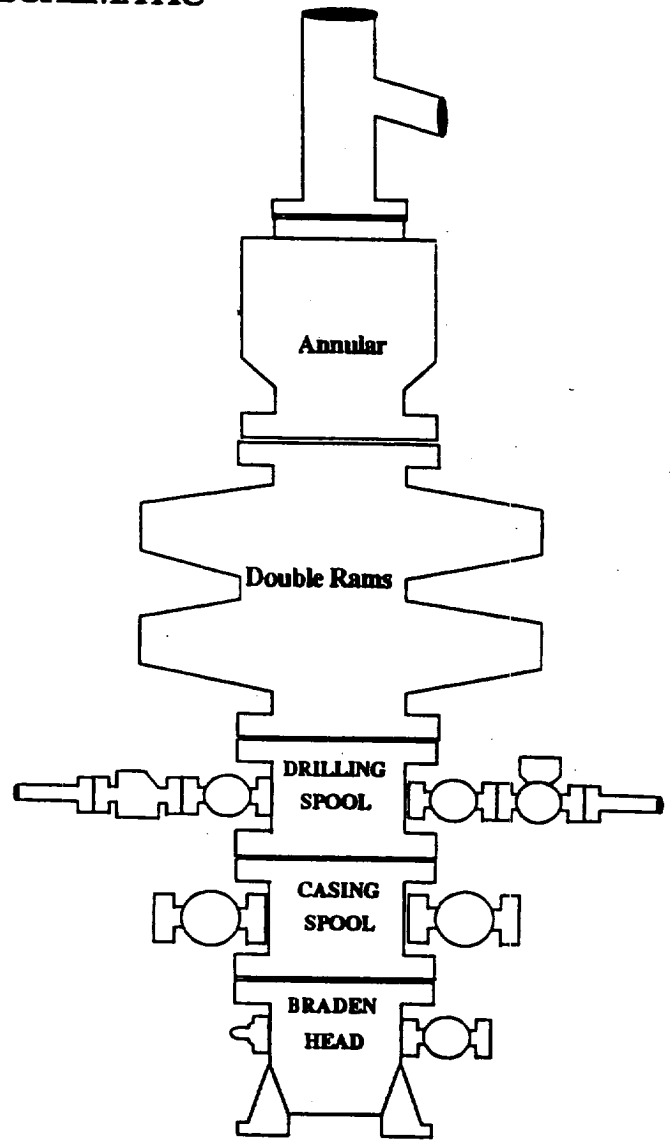
10. Anticipated Starting Date and Duration of Operations:

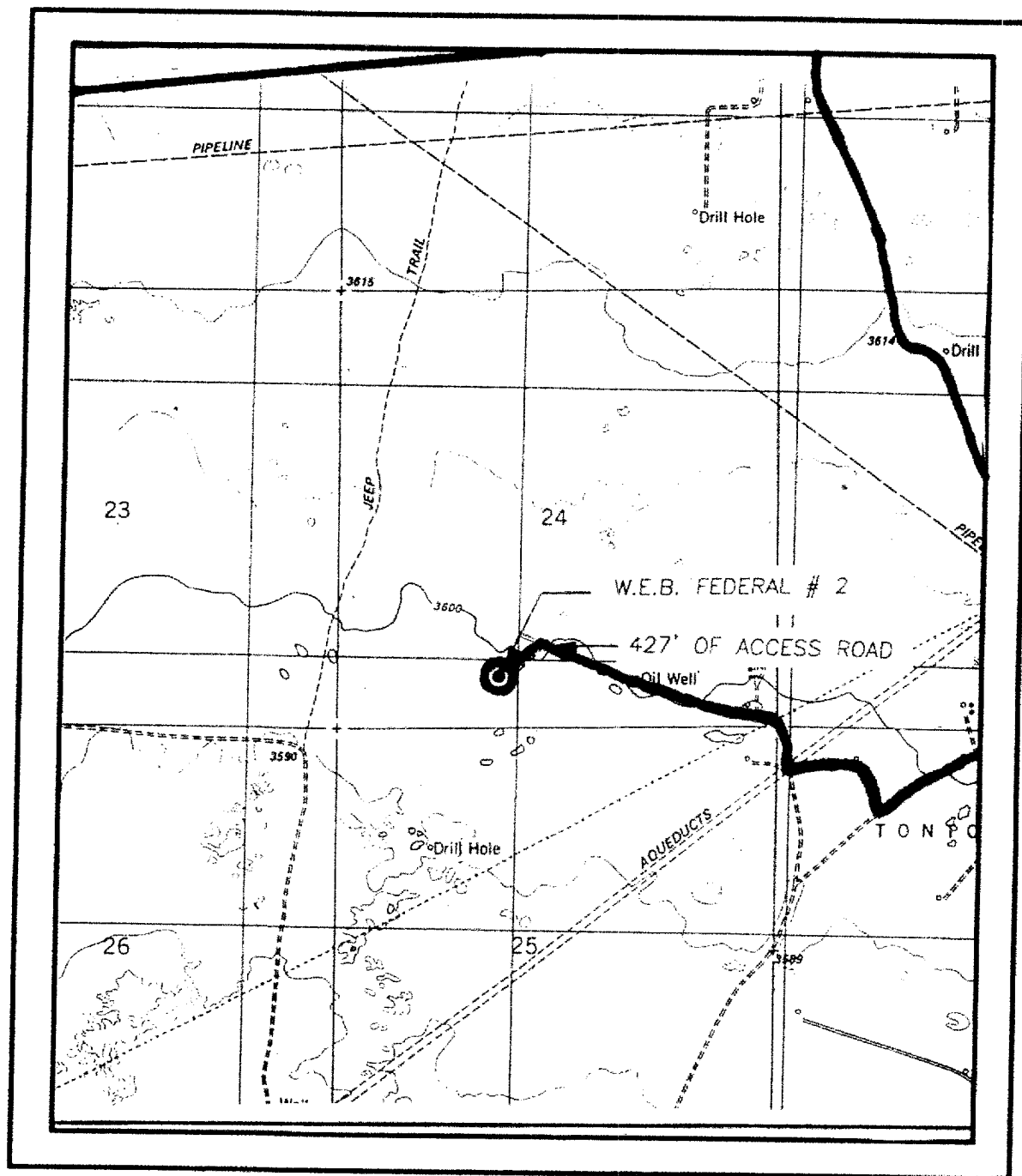
Location and road work will not begin until approval has been received from the BLM. The anticipated spud date is January 28, 2001. Once commenced, the drilling operation should be finished in approximately 21 days. If the well is productive, an additional 30 to 60 days will be required for completion and testing before a decision is made to install permanent facilities.

BOPE SCHEMATIC



Choke Manifold





**W E B Federal No. 2
660' FSL & 1980' FWL
Section 24; T19S - R32E
Lea County, New Mexico**

EXHIBIT THREE