

District I
PO Box 1980, Hobbs, NM 88241-1980
District II
811 S. 1st Street, Artesia, NM 88210-2834
District III
1000 Rio Brazos Rd., Aztec, NM 87410
District IV
2040 South Pacheco, Santa Fe, NM 87505

State of New Mexico
Energy, Minerals & Natural Resources Department

OIL CONSERVATION DIVISION
2040 South Pacheco
Santa Fe, NM 87505

Form C-101
Revised October 18, 1994
Instructions on back
Submit to Appropriate District Office
State Lease - 6 Copies
Fee Lease - 5 Copies

☐ AMENDED REPORT

APPLICATION FOR PERMIT TO DRILL, RE-ENTER, DEEPEN, PLUGBACK, OR ADD A ZONE

¹ Operator name and Address Occidental Permian Limited Partnership P.O. Box 4294 Houston, TX 77210-4294		² OGRID Number 157984
⁴ Property Code 19520	⁵ Property Name North Hobbs G/SA Unit	³ API Number 30-025-35450
		⁶ Well No. 612

⁷ Surface Location									
UL or lot no. E	Section 24	Township 18-S	Range 37-E	Lot. Idn	Feet from the 2220	North/South Line North	Feet from the 406	East/West line West	County Lea

⁸ Proposed Bottom Hole Location If Different From Surface									
UL or lot no.	Section	Township	Range	Lot. Idn	Feet from the	North/South Line	Feet from the	East/West line	County
⁹ Proposed Pool 1 Hobbs; Grayburg - San Andres					¹⁰ Proposed Pool 2				

¹¹ Work Type Code N	¹² Well Type Code O	¹³ Cable/Rotary R	¹⁴ Lease Type Code S	¹⁵ Ground Level Elevation 3676
¹⁶ Multiple No	¹⁷ Proposed Depth 4500'	¹⁸ Formation San Andres	¹⁹ Contractor Key Energy	²⁰ Spud Date May, 2001

²¹ Proposed Casing and Cement Program					
Hole Size	Casing Size	Casing weight/foot	Setting Depth	Sacks of Cement	Estimated TOC
18	14	Conductor	40	50	Surface
12-1/4	8-5/8	24	1650	775	Surface
7-7/8	5-1/2	15.5	4500	950	Surface

²² Describe the proposed program. If this application is to DEEPEN or PLUG BACK give the data on the present productive zone and proposed new productive zone. Describe the blowout prevention program, if any. Use additional sheets if necessary

See attached for proposed drilling program

BOP Program 3000# Ram Preventer

Approval Expires 1 Year From Approval
Date Unless Drilling Underway

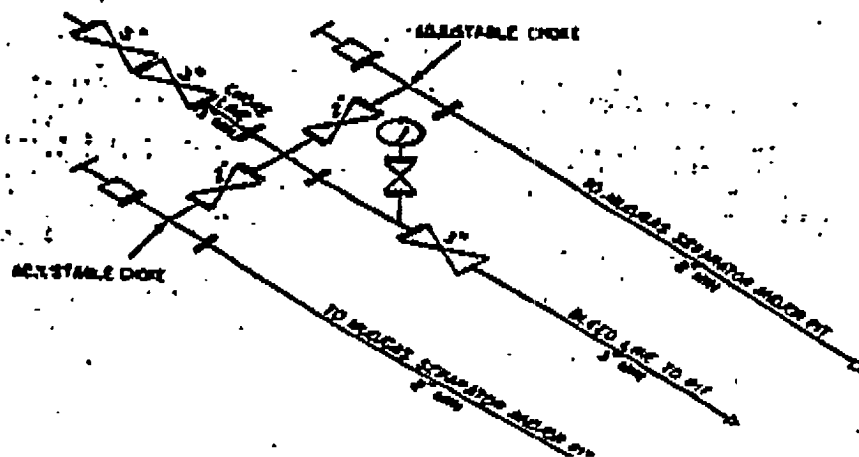
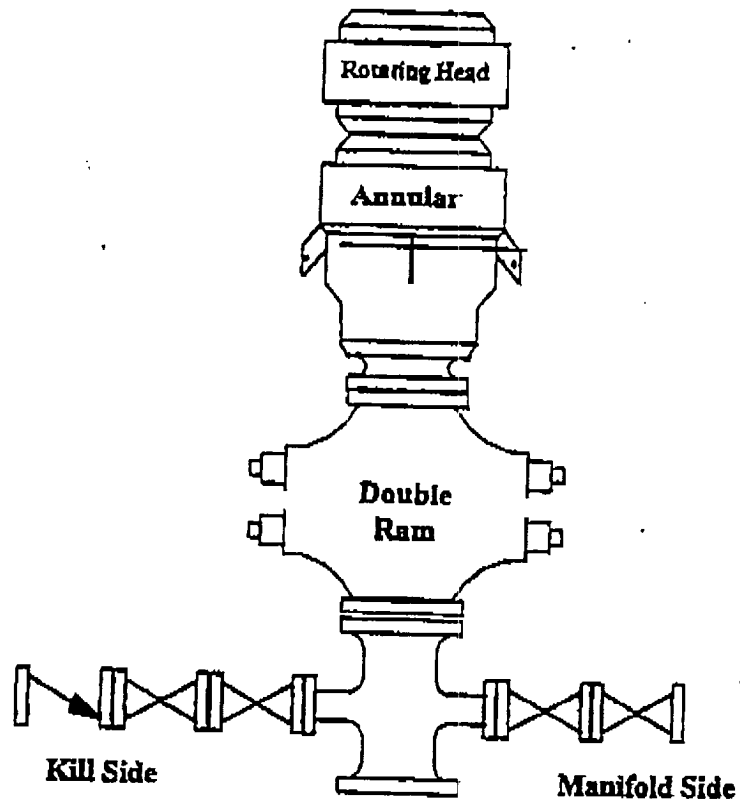
²³ I hereby certify that the information given above is true and complete to the best of my knowledge and belief. Signature: Mark Stephens Printed name: Mark Stephens Title: Business Analyst (SG)	OIL CONSERVATION DIVISION Approved by: Title: Approval Date: 20 2001 Expiration Date:
--	--

8
ml

Proposed Drilling Program
North Hobbs G/SA Unit No. 24-612
Lea County, New Mexico

A 14" conductor will be set and cemented to surface with 50 sx. cement. A 12-1/4" hole will be drilled from surface to approximately 1650'. This will allow for protection of all water zones and casing off of the Red Beds. A full string of 8-5/8", 24#, J-55 surface casing will be run and set 25' into the top of the Rustler Anhydrite with cement circulated to surface. The cement will be allowed to set for a minimum of eight (8) hours (minimum 500# compressive strength) and will then be tested to 1500 psi for 30 minutes before drilling resumes. After the casing is run and cemented, weld on 8-5/8" X 11" 3M casinghead housing and nipple up BOP stack (3000# Ram Preventer).

A 7-7/8" hole will be drilled out from surface casing point (1650') to +/- 4500' TVD. A full string of 5-1/2", 15.5#, J-55 production casing will be run to TD and cemented to surface (casing test to 1500 psi will be done by the completion rig).



DISTRICT I
P.O. Box 1990, Hobbs, NM 88241-1990

State of New Mexico
Energy, Minerals and Natural Resources Department

Form C-102
Revised February 10, 1994
Submit to Appropriate District Office
State Lease - 4 Copies
Fee Lease - 3 Copies

DISTRICT II
P.O. Drawer DD, Artesia, NM 88211-0710

DISTRICT III
1000 Rio Brazos Rd., Aztec, NM 87410

DISTRICT IV
P.O. BOX 2088, SANTA FE, N.M. 87504-2088

OIL CONSERVATION DIVISION

P.O. Box 2088
Santa Fe, New Mexico 87504-2088

☐ AMENDED REPORT

WELL LOCATION AND ACREAGE DEDICATION PLAT

API Number 30-025-35450	Pool Code 31920	Pool Name HOBBS: GRAYBURG - SAN ANDRES
Property Code 19520	Property Name NORTH HOBBS G/SA UNIT	Well Number 612
OGRID No. 157984	Operator Name Occidental Permian Limited Partnership	Elevation 3676

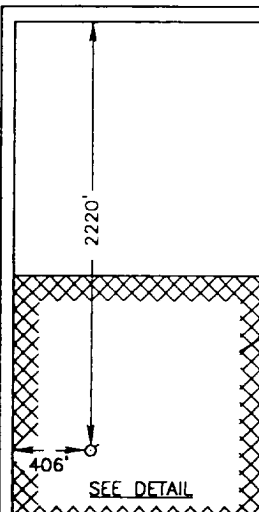
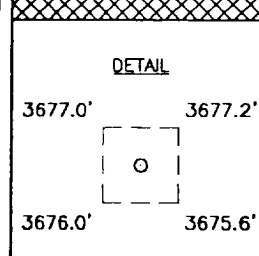
Surface Location

UL or lot No.	Section	Township	Range	Lot Idn	Feet from the	North/South line	Feet from the	East/West line	County
E	24	18 S	37 E		2220	NORTH	406	WEST	LEA

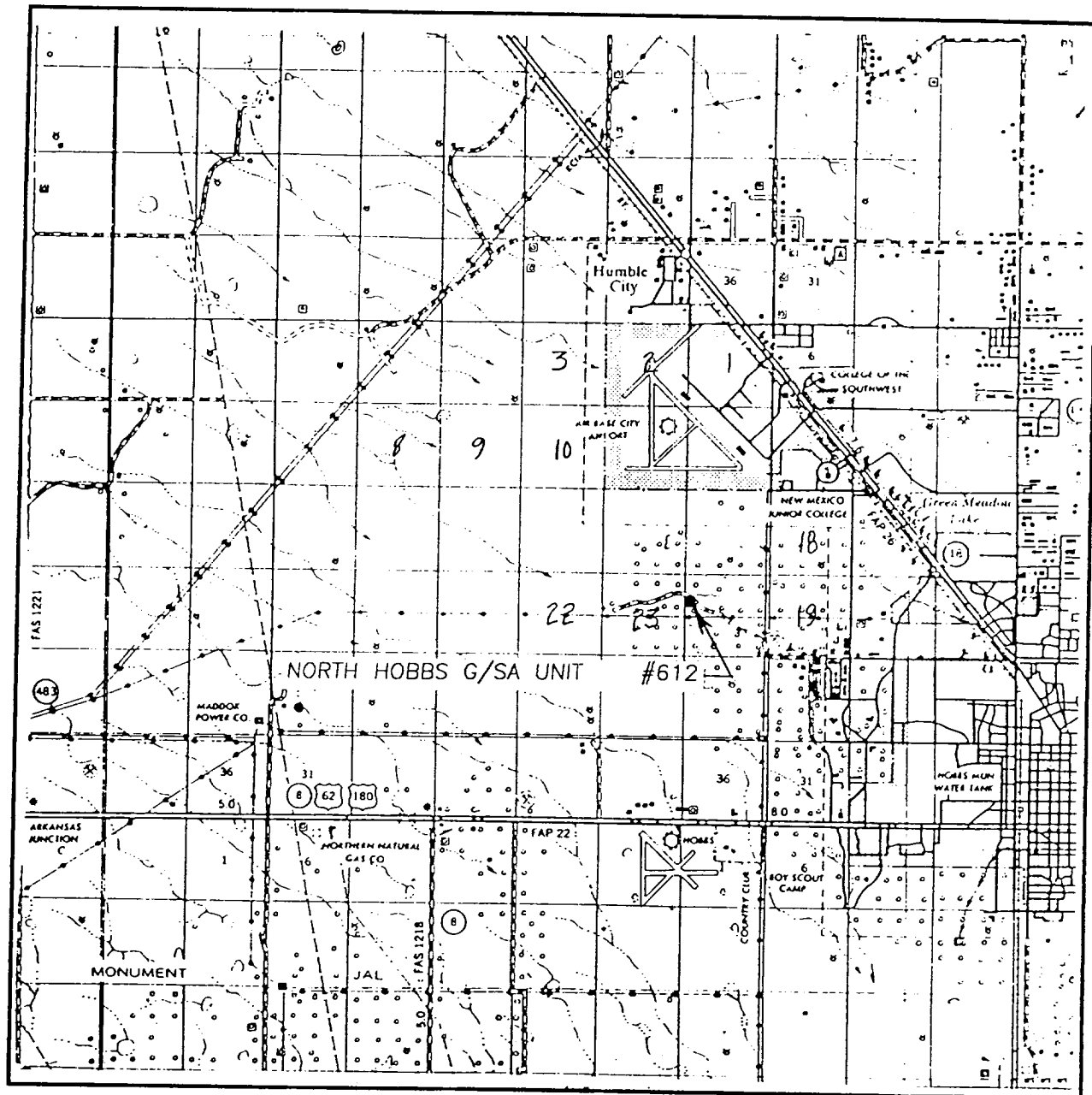
Bottom Hole Location If Different From Surface

UL or lot No.	Section	Township	Range	Lot Idn	Feet from the	North/South line	Feet from the	East/West line	County
Dedicated Acres 40	Joint or Infill I	Consolidation Code U	Order No.						

NO ALLOWABLE WILL BE ASSIGNED TO THIS COMPLETION UNTIL ALL INTERESTS HAVE BEEN CONSOLIDATED
OR A NON-STANDARD UNIT HAS BEEN APPROVED BY THE DIVISION

	<p>PROPOSED SURFACE LOC. NAD 27 NM EAST ZONE N=632583.9 E=844938.5</p> <p>GEOGRAPHIC LOCATION NAD 27 (SURF.) LAT. = 32°44'02.57" N LONG. = 103°12'41.80" W</p>	<p>OPERATOR CERTIFICATION</p> <p>I hereby certify the the information contained herein is true and complete to the best of my knowledge and belief.</p> <p><u>Mark Stephens</u> Signature</p> <p>Mark Stephens Printed Name</p> <p>Business Analyst (SG) Title</p> <p>March 13, 2001 Date</p>
<p>DETAIL</p> <p>3677.0' 3677.2' 3676.0' 3675.6'</p> 		<p>SURVEYOR CERTIFICATION</p> <p>I hereby certify that the well location shown on this plat was plotted from field notes of actual surveys made by me or under my supervision, and that the same is true and correct to the best of my belief.</p> <p>JANUARY 31, 2001</p> <p>Date Surveyed LMP</p> <p>Signature & Seal of Professional Surveyor</p> <p><u>Barry B. Edson</u> 03/15/01 01-11-0163</p> <p>Certificate No. RONALD E. EDSON 3239 CARY EDSON 12841</p>

VICINITY MAP



SCALE: 1" = 2 MILES

SEC. 24 TWP. 18-S RGE. 37-E

SURVEY N.M.P.M.

COUNTY LEA

DESCRIPTION 2220' FNL & 406' FWL

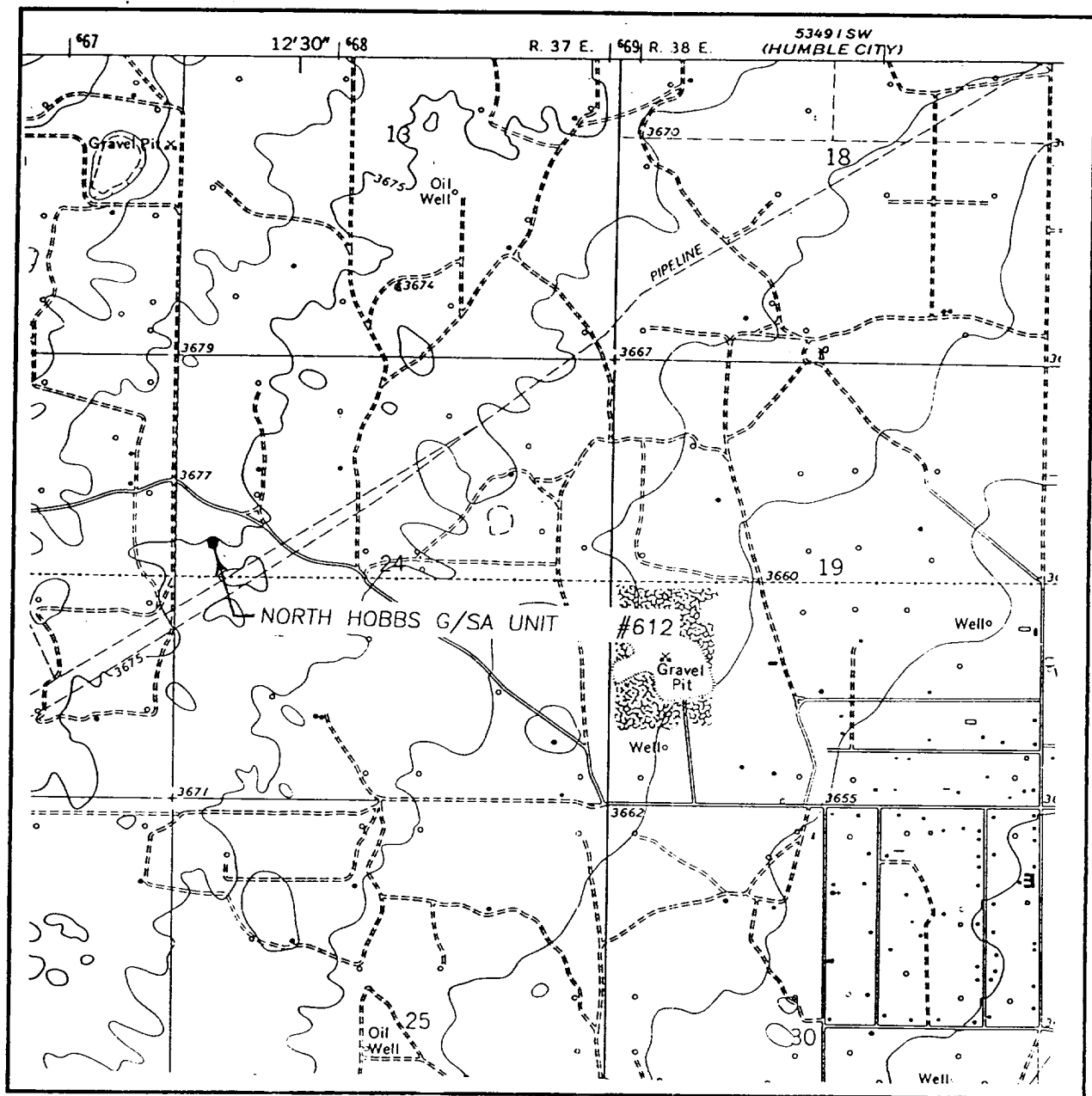
ELEVATION 3676

OPERATOR OCCIDENTAL PERMIAN LTD.

LEASE NORTH HOBBS G/SA UNIT

JOHN WEST SURVEYING
HOBBS, NEW MEXICO
(505) 393-3117

LOCATION VERIFICATION MAP



SCALE: 1" = 2000'

CONTOUR INTERVAL:
HOBBS, N.M. - 5'

SEC. 24 TWP. 18-S RGE. 37-E

SURVEY N.M.P.M.

COUNTY LEA

DESCRIPTION 2220' FNL & 406' FWL

ELEVATION 3676

OPERATOR OCCIDENTAL PERMIAN LTD.

LEASE NORTH HOBBS G/SA UNIT

U.S.G.S. TOPOGRAPHIC MAP
HOBBS, N.M.

JOHN WEST SURVEYING
HOBBS, NEW MEXICO
(505) 393-3117

ABOVE DATE DOES NOT
INDICATE WHEN
CONFIDENTIAL LOGS
WILL BE RELEASED

ELF

13 May 68