

District I  
PO Box 1180, Hobbs, NM 88241-1980  
District II  
811 S. 1st Street, Artesia, NM 88210-2834  
District III  
1000 Rio Brazos Rd., Aztec, NM 87410  
District IV  
2040 South Pacheco, Santa Fe, NM 87505

State of New Mexico  
Energy, Minerals & Natural Resources Department

OIL CONSERVATION DIVISION  
2040 South Pacheco  
Santa Fe, NM 87505

Form C-101

Revised October 18, 1994

Instructions on back

Submit to Appropriate District Office

State Lease - 6 Copies

Fee Lease - 5 Copies

☐ AMENDED REPORT

APPLICATION FOR PERMIT TO DRILL, RE-ENTER, DEEPEN, PLUGBACK, OR ADD A ZONE

<sup>1</sup> Operator name and Address <b>Occidental Permian Limited Partnership P.O. Box 4294 Houston, TX 77210-4294</b>		<sup>2</sup> OGRID Number <b>157984</b>
<sup>4</sup> Property Code <b>19520</b>		<sup>3</sup> API Number <b>30-0 25-35534</b>
<sup>5</sup> Property Name <b>North Hobbs G/SA Unit</b>		<sup>6</sup> Well No. <b>844</b>

<sup>7</sup> Surface Location									
UL or lot no. <b>M</b>	Section <b>33</b>	Township <b>18-S</b>	Range <b>38-E</b>	Lot. Idn	Feet from the <b>1051</b>	North/South Line <b>South</b>	Feet from the <b>217</b>	East/West line <b>West</b>	County <b>Lea</b>

<sup>8</sup> Proposed Bottom Hole Location If Different From Surface									
UL or lot no. <b>P</b>	Section <b>32</b>	Township <b>18-S</b>	Range <b>38-E</b>	Lot. Idn	Feet from the <b>650</b>	North/South Line <b>South</b>	Feet from the <b>15</b>	East/West line <b>East</b>	County <b>Lea</b>
<sup>9</sup> Proposed Pool 1 <b>Hobbs; Grayburg - San Andres</b>					<sup>10</sup> Proposed Pool 2				

<sup>11</sup> Work Type Code <b>N</b>	<sup>12</sup> Well Type Code <b>O</b>	<sup>13</sup> Cable/Rotary <b>R</b>	<sup>14</sup> Lease Type Code <b>P 5</b>	<sup>15</sup> Ground Level Elevation <b>3634'</b>
<sup>16</sup> Multiple <b>No</b>	<sup>17</sup> Proposed Depth <b>4500'</b>	<sup>18</sup> Formation <b>San Andres</b>	<sup>19</sup> Contractor <b>Key Energy</b>	<sup>20</sup> Spud Date <b>May, 2001</b>

<sup>21</sup> Proposed Casing and Cement Program					
Hole Size <b>18</b>	Casing Size <b>14</b>	Casing weight/foot <b>Conductor</b>	Setting Depth <b>40</b>	Sacks of Cement <b>50</b>	Estimated TOC <b>Surface</b>
<b>12-1/4</b>	<b>8-5/8</b>	<b>24</b>	<b>1650</b>	<b>775</b>	<b>Surface</b>
<b>7-7/8</b>	<b>5-1/2</b>	<b>15.5</b>	<b>4500</b>	<b>950</b>	<b>Surface</b>

<sup>22</sup> Describe the proposed program. If this application is to DEEPEN or PLUG BACK give the data on the present productive zone and proposed new productive zone. Describe the blowout prevention program, if any. Use additional sheets if necessary

See attached for proposed drilling program

BOP Program 3000# Ram Preventer

Well to be drilled as a directional well due to a surface obstruction situated above the bottomhole target

Permit Expires 1 Year From Approval

Data Unless Drilling Unconventional

<sup>23</sup> I hereby certify that the information given above is true and complete to the best of my knowledge and belief.

Signature:

*Mark Stephens*

Printed name:

Mark Stephens

Title:

Business Analyst (SG)

OIL CONSERVATION DIVISION

Approved by:

*D.*

Title:

Approval Date: **APP 27 2001**

Expiration Date:

Proposed Drilling Program  
North Hobbs G/SA Unit No. 844  
Letter P, Sec. 32, T-18-S, R-38-E  
Lea County, New Mexico

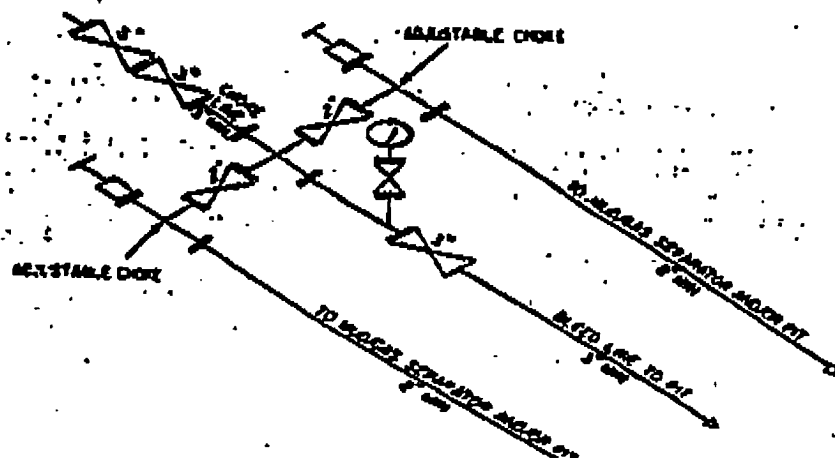
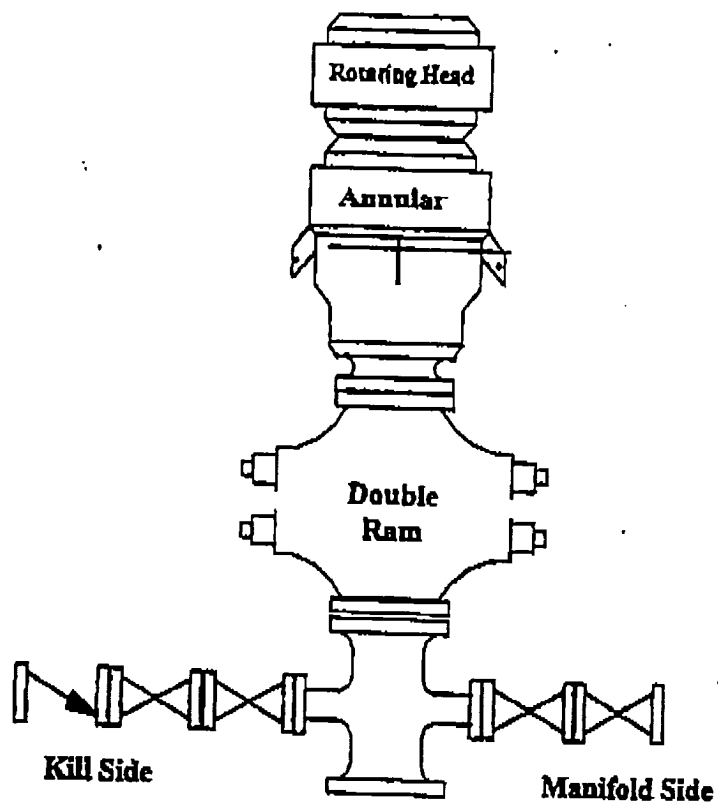
---

A 14" conductor will be set and cemented to surface with 50 sx. cement. A 12-1/4" hole will be drilled from surface to approximately 1650'. This will allow for protection of all water zones and casing off of the Red Beds. A full string of 8-5/8", 24#, J-55 surface casing will be run and set 25' into the top of the Rustler Anhydrite with cement circulated to surface. The cement will be allowed to set for a minimum of eight (8) hours (minimum 500# compressive strength) and will then be tested to 1500 psi for 30 minutes before drilling resumes. After the casing is run and cemented, weld on 8-5/8" X 11" 3M casinghead housing and nipple up BOP stack (3000# Ram Preventer).

A 7-7/8" hole will be drilled out from surface casing point (1650') to +/- 4500' TVD. A full string of 5-1/2", 15.5#, J-55 production casing will be run to TD and cemented to surface (casing test to 1500 psi will be done by the completion rig).

---

-



**DISTRICT II**  
**P.O. Drawer DD, Artesia, NM 88211-0719**

## OIL CONSERVATION DIVISION

DISTRICT III  
1000 Rio Brazos Rd., Artes, NM 87410

P.O. Box 2088  
Santa Fe, New Mexico 87504-2088

**DISTRICT IV**  
**P.O. BOX 2088, SANTA FE, N.M. 87504-2088**

## WELL LOCATION AND ACREAGE DEDICATION PLAT

Form C-102

Revised February 10, 1984

Submit to Appropriate District Office

State Lease - 4 Copies

For Lease - 3 Copies

API Number 30-025-35534		Pool Code 31920	Pool Name Hobbs; Grayburg - San Andres
Property Code 19520	Property Name NORTH HOBBS G/SA UNIT		Well Number 844
OGRID No. 157984	Operator Name Occidental Permian Limited Partnership		Elevation 3634'

### Surface Location

UL or lot No.	Section	Township	Range	Lot Idn	Feet from the	North/South line	Feet from the	East/West line	County
M	33	18-S	38-E		1051	SOUTH	217	WEST	LEA

## Bottom Hole Location If Different From Surface

UL or lot No. P	Section 32	Township 18-S	Range 38-E	Lot Idn	Feet from the 650	North/South line SOUTH	Feet from the 15	East/West line EAST	County LEA
Dedicated Acres 40	Joint or Infill I	Consolidation Code U	Order No.						

NO ALLOWABLE WILL BE ASSIGNED TO THIS COMPLETION UNTIL ALL INTERESTS HAVE BEEN CONSOLIDATED  
OR A NON-STANDARD UNIT HAS BEEN APPROVED BY THE DIVISION

APPROVED BY THE DIVISION

(TRUE BRG.) S29°56'W-	418' SURF. TO PROP. PENETRATION PT.
(TRUE BRG.) S29°56'W-	453' SURF. TO PROP. BOTTOM HOLE LOC.

The survey map displays a grid with two vertical sections labeled SECTION 32 and SECTION 33. A dashed rectangle indicates the PROPOSED SURFACE LOC. at NAD 27 N.M.E., with coordinates Y=620138.6, X=860695.8, LAT. 32°41'57.76"N, and LONG. 103°09'38.97"W. Dimensions around this rectangle are 3633.7', 3634.7', 3632.1', and 3633.0'. A DETAIL view shows a square with a circle in the center. To the left, a PROPOSED PENETRATION POINT is shown at 3884.4' TVD, with dimensions 217', 8', 15', 850', and 1051'. A PROPOSED BOTTOM HOLE LOCATION is also indicated. A 330' UNIT BOUNDARY OFFSET LINE runs horizontally across the bottom. The NORTH HOBBS (GRAYBURG-SAN ANDRES UNIT BOUNDARY) is shown as a hatched area at the very bottom.

SECTION 32  
SECTION 33

3633.7' 3634.7'  
3632.1' 3633.0'

DETAIL

PROPOSED SURFACE LOC.  
NAD 27 N.M.E.  
Y=620138.6  
X=860695.8  
LAT. 32°41'57.76"N  
LONG. 103°09'38.97"W

PROPOSED PENETRATION  
POINT @ 3884.4' TVD

217'  
8'  
15'  
850'  
1051'

SEE DETAIL

330' UNIT BOUNDARY OFFSET LINE

NORTH HOBBS (GRAYBURG-SAN ANDRES UNIT BOUNDARY)

OPERATOR CERTIFICATION

I hereby certify the information contained herein is true and complete to the best of my knowledge and belief.

Signature

Mark Stephens

Printed Name

Business Analyst (SG)

Title

April 24, 2001

Date

SURVEYOR CERTIFICATION

I hereby certify that the well location shown on this plat was plotted from field notes of actual surveys made by me or under my supervision and that the same is true and correct to the best of my belief.

MARCH 14, 2001

Date Surveyed

AWB

Signature

Cecil J. Pugh

Professional Surveyor

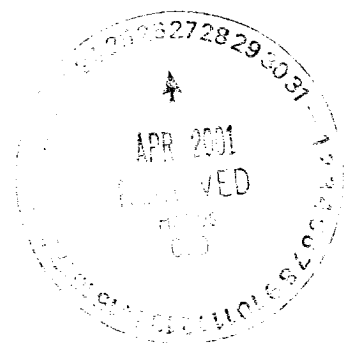
GEOLOGICAL SURVEY OF NEW MEXICO

4/12/01

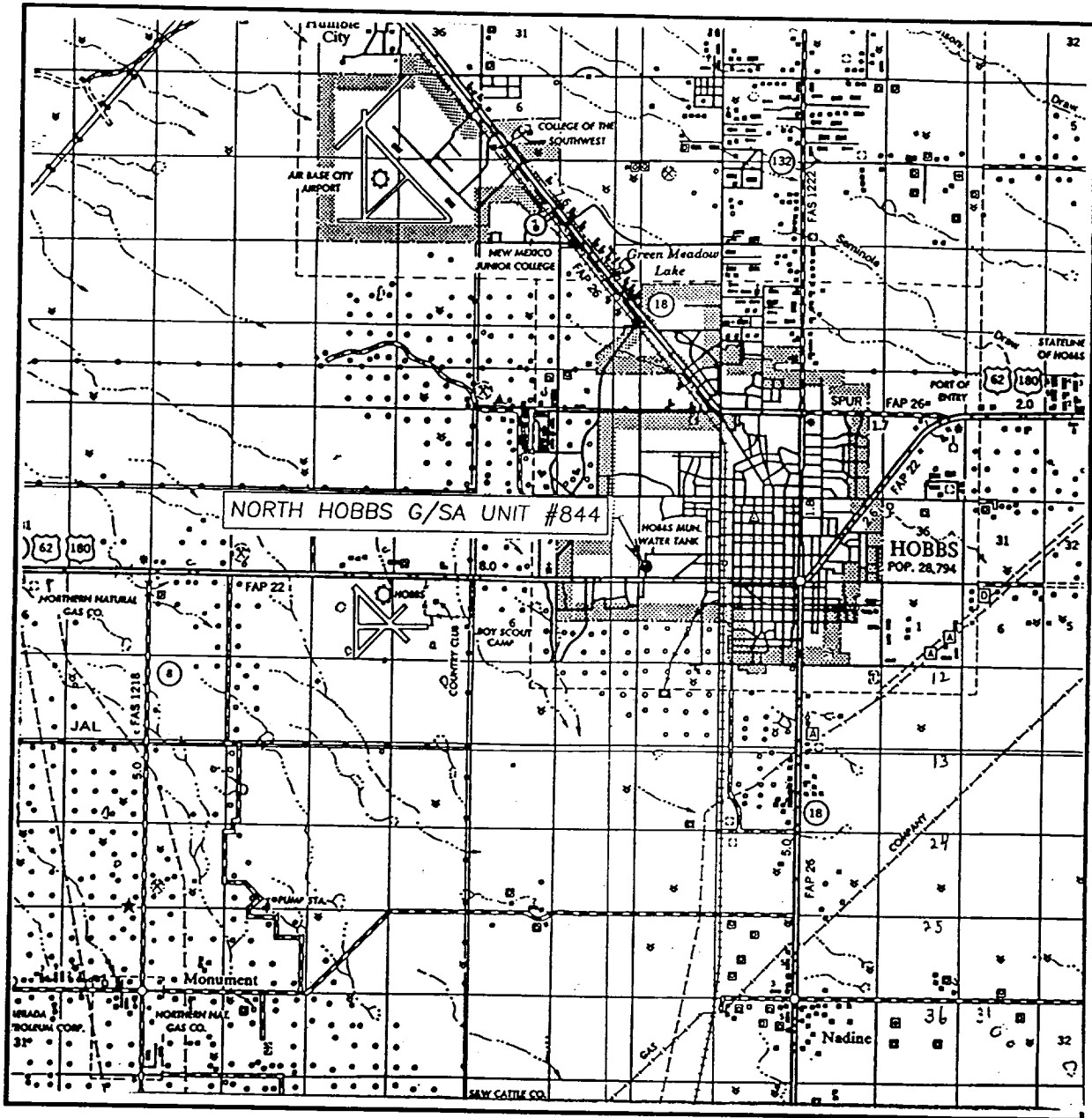
81-11-0352

Certificate No. RONALD S. EDSON 3230

CARY EDSON 12641



# VICINITY MAP



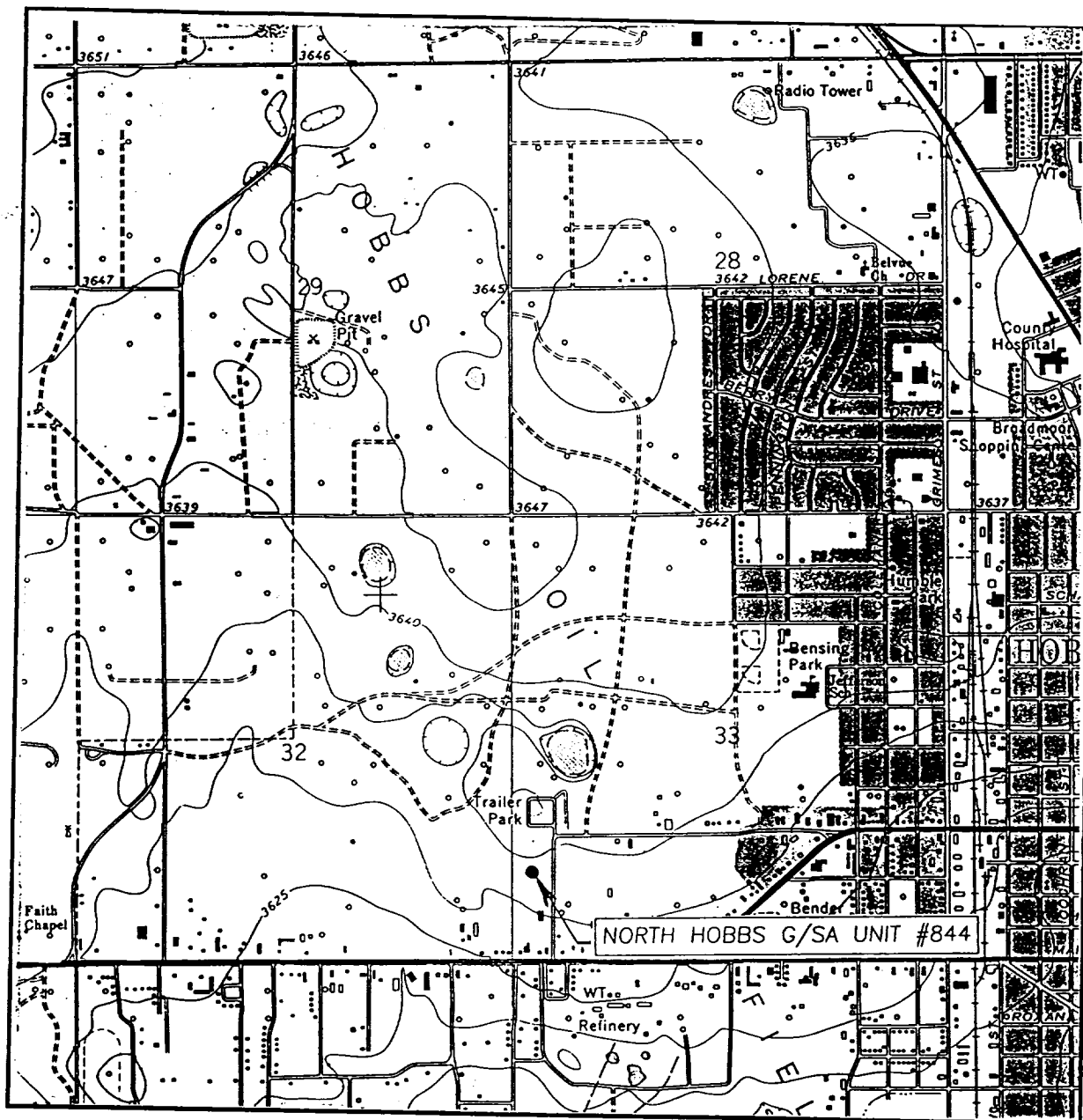
SCALE: 1" = 2 MILES

SEC. 33 TWP. 18-S RGE. 38-E  
 SURVEY N.M.P.M.  
 COUNTY LEA  
 DESCRIPTION 1051' FSL & 217' FWL  
 ELEVATION 3634'  
 OPERATOR OCCIDENTAL PERMIAN LTD.  
 LEASE NORTH HOBBS G/SA UNIT

JOHN WEST SURVEYING  
 HOBBS, NEW MEXICO  
 (505) 393-3117



# LOCATION VERIFICATION MAP



SCALE: 1" = 2000'

CONTOUR INTERVAL: 5'

HOBBS WEST, N.M.

SEC. 33 TWP. 18-S RGE. 38-E

SURVEY N.M.P.M.

COUNTY LEA

DESCRIPTION 1051'FSL & 217'FWL

ELEVATION 3634'

OPERATOR OCCIDENTAL PERMIAN LTD.

LEASE NORTH HOBBS G/SA UNIT

U.S.G.S. TOPOGRAPHIC MAP  
HOBBS WEST, N.M.

JOHN WEST SURVEYING  
HOBBS, NEW MEXICO  
(505) 393-3117



