

District I  
PO Box 1980, Hobbs, NM 88241-1980  
District II  
811 S. 1st Street, Artesia, NM 88210-2834  
District III  
1000 Rio Brazos Rd., Aztec, NM 87410  
District IV  
2040 South Pacheco, Santa Fe, NM 87505

State of New Mexico  
Energy, Minerals & Natural Resources Department

OIL CONSERVATION DIVISION  
2040 South Pacheco  
Santa Fe, NM 87505

Form C-101

Revised October 18, 1994

Instructions on back

Submit to Appropriate District Office

State Lease - 6 Copies

Fee Lease - 5 Copies

☐ AMENDED REPORT

APPLICATION FOR PERMIT TO DRILL, RE-ENTER, DEEPEN, PLUGBACK, OR ADD A ZONE

<sup>1</sup> Operator name and Address <b>Occidental Permian Limited Partnership P.O. Box 4294 Houston, TX 77210-4294</b>		<sup>2</sup> OGRID Number <b>157984</b>
		<sup>3</sup> API Number <b>30-025-3555</b>
<sup>4</sup> Property Code <b>19520</b>	<sup>5</sup> Property Name <b>North Hobbs G/SA Unit</b>	<sup>6</sup> Well No. <b>614</b>

<sup>7</sup> Surface Location

UL or lot no.	Section	Township	Range	Lot. Idn	Feet from the	North/South Line	Feet from the	East/West line	County
<b>G</b>	<b>24</b>	<b>18-S</b>	<b>37-E</b>		<b>2140</b>	<b>North</b>	<b>1542</b>	<b>East</b>	<b>Lea</b>

<sup>8</sup> Proposed Bottom Hole Location If Different From Surface

UL or lot no.	Section	Township	Range	Lot. Idn	Feet from the	North/South Line	Feet from the	East/West line	County
<sup>9</sup> Proposed Pool 1 <b>Hobbs; Grayburg - San Andres</b>					<sup>10</sup> Proposed Pool 2				

<sup>11</sup> Work Type Code <b>N</b>	<sup>12</sup> Well Type Code <b>O</b>	<sup>13</sup> Cable/Rotary <b>R</b>	<sup>14</sup> Lease Type Code <b>S</b>	<sup>15</sup> Ground Level Elevation <b>3669</b>
<sup>16</sup> Multiple <b>No</b>	<sup>17</sup> Proposed Depth <b>4500'</b>	<sup>18</sup> Formation <b>San Andres</b>	<sup>19</sup> Contractor <b>Key Energy</b>	<sup>20</sup> Spud Date <b>May, 2001</b>

<sup>21</sup> Proposed Casing and Cement Program

Hole Size	Casing Size	Casing weight/foot	Setting Depth	Sacks of Cement	Estimated TOC
<b>18</b>	<b>14</b>	<b>Conductor</b>	<b>40</b>	<b>50</b>	<b>Surface</b>
<b>12-1/4</b>	<b>8-5/8</b>	<b>24</b>	<b>1650</b>	<b>775</b>	<b>Surface</b>
<b>7-7/8</b>	<b>5-1/2</b>	<b>15.5</b>	<b>4500</b>	<b>950</b>	<b>Surface</b>

<sup>22</sup> Describe the proposed program. If this application is to DEEPEN or PLUG BACK give the data on the present productive zone and proposed new productive zone. Describe the blowout prevention program, if any. Use additional sheets if necessary

See attached for proposed drilling program

BOP Program 3000# Ram Preventer

Permit Expires 1 Year From Approval  
Date Unless Drilling Underway

<sup>23</sup> I hereby certify that the information given above is true and complete to the best of my knowledge and belief. Signature: <u>Mark Stephens</u> Printed name: <b>Mark Stephens</b> Title: <b>Business Analyst (SG)</b>	<b>OIL CONSERVATION DIVISION</b> Approved by: <u>[Signature]</u> Title: <b>DISTRICT SUPERVISOR</b> Approval Date: <u>[Date]</u> Expiration Date: <u>[Date]</u>
--	---

see pg 2

8 msp

Proposed Drilling Program  
North Hobbs G/SA Unit No. 614  
Sec. 24, T-18-S, R-37-E  
Lea County, New Mexico

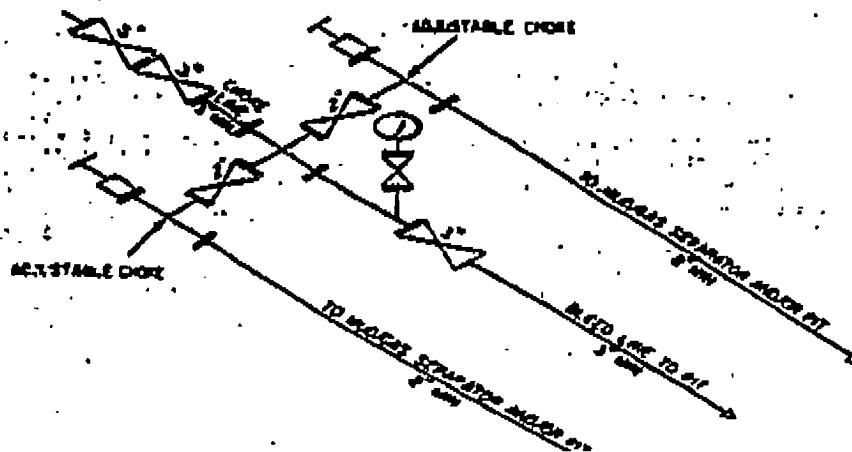
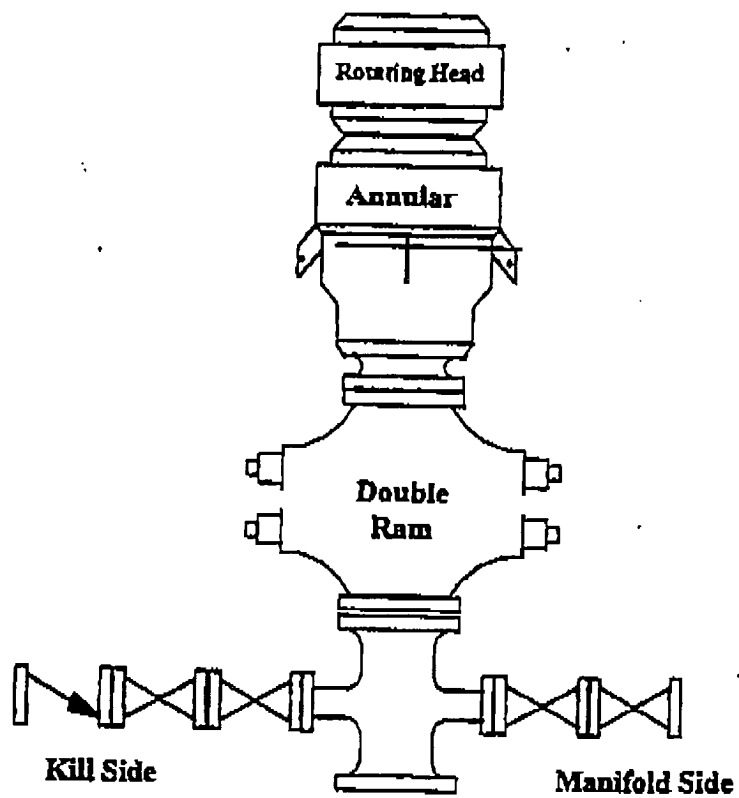
---

A 14" conductor will be set and cemented to surface with 50 sx. cement. A 12-1/4" hole will be drilled from surface to approximately 1650'. This will allow for protection of all water zones and casing off of the Red Beds. A full string of 8-5/8", 24#, J-55 surface casing will be run and set <sup>50'</sup>25' into the top of the Rustler Anhydrite with cement circulated to surface. The cement will be allowed to set for a minimum of eight (8) hours (minimum 500# compressive strength) and will then be tested to 1500 psi for 30 minutes before drilling resumes. After the casing is run and cemented, weld on 8-5/8" X 11" 3M casinghead housing and nipple up BOP stack (3000# Ram Preventer).

A 7-7/8" hole will be drilled out from surface casing point (1650') to +/- 4500' TVD. A full string of 5-1/2", 15.5#, J-55 production casing will be run to TD and cemented to surface (casing test to 1500 psi will be done by the completion rig).

---

- 50' Rustler Anhydrite normal. CW



## DISTRICT I

P.O. Box 1990, Hobbs, NM 88241-1990

## DISTRICT II

P.O. Drawer 00, Artesia, NM 88211-0710

## DISTRICT III

1000 Rio Brazos Rd., Artec, NM 87410

## DISTRICT IV

P.O. BOX 2088, SANTA FE, N.M. 87504-2088

## State of New Mexico

Energy, Minerals and Natural Resources Department

Form C-102

Revised February 10, 1994

Submit to Appropriate District Office

State Lease - 4 Copies

Fee Lease - 3 Copies

## OIL CONSERVATION DIVISION

P.O. Box 2088

Santa Fe, New Mexico 87504-2088

## WELL LOCATION AND ACREAGE DEDICATION PLAT

☐ AMENDED REPORT

API Number <b>30-025-35555</b>	Pool Code <b>31920</b>	Pool Name <b>HOBBS: GRAYBURG-SAN ANDRES</b>
Property Code <b>19520</b>	Property Name <b>NORTH HOBBS G/SA UNIT</b>	Well Number <b>614</b>
OGRID No. <b>157984</b>	Operator Name <b>Occidental Permian Limited Partnership</b>	Elevation <b>3669'</b>

## Surface Location

UL or lot No.	Section	Township	Range	Lot Idn	Feet from the	North/South line	Feet from the	East/West line	County
G	24	18-S	37-E		2140	NORTH	1542	EAST	LEA

## Bottom Hole Location If Different From Surface

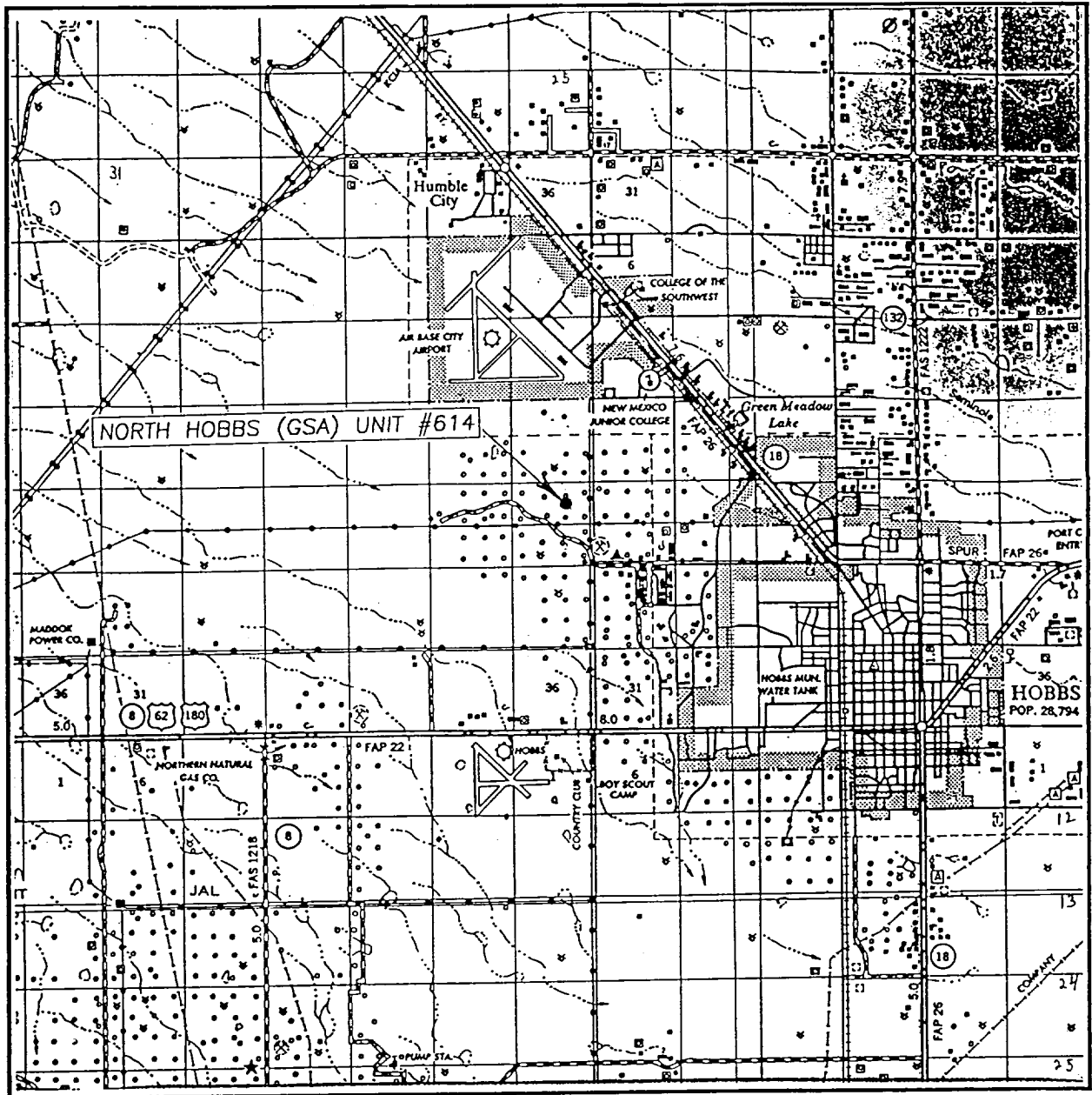
UL or lot No.	Section	Township	Range	Lot Idn	Feet from the	North/South line	Feet from the	East/West line	County
Dedicated Acres	Joint or Infill	Consolidation Code	Order No.						
40	I	U							

NO ALLOWABLE WILL BE ASSIGNED TO THIS COMPLETION UNTIL ALL INTERESTS HAVE BEEN CONSOLIDATED  
OR A NON-STANDARD UNIT HAS BEEN APPROVED BY THE DIVISION

				<b>OPERATOR CERTIFICATION</b>  I hereby certify the the information contained herein is true and complete to the best of my knowledge and belief.  <u>Mark Stephens</u> Signature  Mark Stephens Printed Name  Business Analyst (SG) Title  May 16, 2001 Date	
<b>GEODETC COORDINATES</b> NAD 27 N.M. EAST ZONE Y = 632688.3 X = 848274.4 LAT. 32°44'03.26"N LONG. 103°12'02.74"W				<b>SURVEYOR CERTIFICATION</b>  I hereby certify that the well location shown on this plat was plotted from field notes of actual surveys made by me or under my supervision and that the same is true and correct to the best of my belief.  MAY 09, 2001  Date Surveyed Signature & Seal of Professional Surveyor  Certificate No. 3239 GARY EIDSON 12641	



# VICINITY MAP



SCALE: 1" = 2 MILES

SEC. 24 TWP. 18-S RGE. 37-E

SURVEY N.M.P.M.

COUNTY LEA

DESCRIPTION 2140' FNL & 1542' FEL

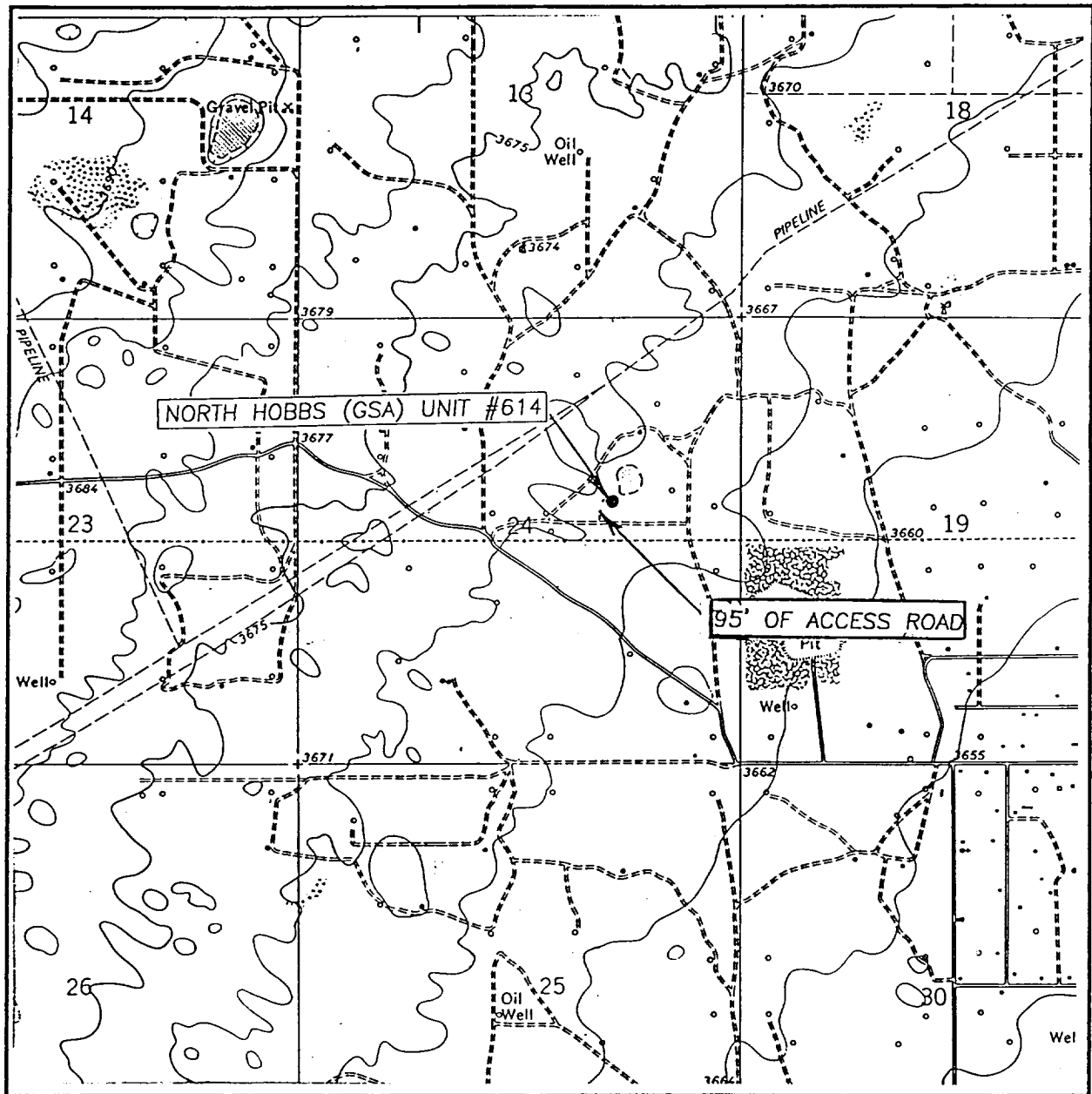
ELEVATION 3669'

OPERATOR OCCIDENTAL PERMIAN LTD.

LEASE NORTH HOBBS (GSA) UNIT

JOHN WEST SURVEYING  
HOBBS, NEW MEXICO  
(505) 393-3117

# LOCATION VERIFICATION MAP



SCALE: 1" = 2000'

CONTOUR INTERVAL: 5'  
HOBBS WEST, N.M.

SEC. 24 TWP. 18-S RGE. 37-E

SURVEY N.M.P.M.

COUNTY LEA

DESCRIPTION 2140' FNL & 1542' FEL

ELEVATION 3669'

OPERATOR OCCIDENTAL PERMIAN LTD.

LEASE NORTH HOBBS (GSA) UNIT

U.S.G.S. TOPOGRAPHIC MAP  
HOBBS WEST, N.M.

JOHN WEST SURVEYING  
HOBBS, NEW MEXICO  
(505) 393-3117

ELF 8/2/01  
ABOVE DATE DOES NOT  
INDICATE WHEN  
CONFIDENTIAL LOGS  
WILL BE RELEASED

