

District I
PO Box 1980, Hobbs, NM 88241-1980

District II
811 South First, Artesia, NM 88210

District III
1000 Rio Brazos Rd., Aztec, NM 87410

District IV
2040 South Pacheco, Santa Fe, NM 87505

State of New Mexico
Energy, Minerals & Natural Resources Department

OIL CONSERVATION DIVISION
2040 South Pacheco
Santa Fe, NM 87505

Form C-101
Revised October 18, 1994
Instructions on back
Submit to Appropriate District Office
State Lease - 6 Copies
Fee Lease - 5 Copies

☐ AMENDED REPORT

APPLICATION FOR PERMIT TO DRILL, RE-ENTER, DEEPEN, PLUGBACK, OR ADD A ZONE

Operator Name and Address Nearburg Producing Company 3300 N A St., Bldg 2, Suite 120 Midland, TX 79705		OGRID Number 015742
		API Number 30 - 025-35569
Property Code 21886	Property Name Wapiti 32 State Com	Well No. 2

Surface Location

UL or lot no.	Section	Township	Range	Lot Idn	Feet from the	North/South line	Feet from the	East/West Line	County
M	32	18S	34E		660	South	660	West	Lea

Proposed Bottom Hole Location If Different From Surface

UL or lot no.	Section	Township	Range	Lot Idn	Feet from the	North/South line	Feet from the	East/West Line	County
Proposed Pool 1 La Rica Morrow, West						Proposed Pool 2			

Work Type Code N	Well Type Code G	Cable/Rotary R	Lease Type Code S	Ground Level Elevation 3854
Multiple No	Proposed Depth 13700	Formation Morrow	Contractor Patterson Drilling Co.	Spud Date 08-01-01

Proposed Casing and Cement Program

Hole Size	Casing Size	Casing weight/foot	Setting Depth	Sacks of Cement	Estimated TOC
17-1/2"	13-3/8"	48#	350'	250 sxs	Circ to surface
11"	8-5/8"	32#	5200'	1800 sxs	Circ to surface
7-7/8"	5-1/2"	17# & 20#	13,700'	825 sxs	Tie back

Describe the proposed program. If this application is to DEEPEN or PLUG BACK give the data on the present productive zone and proposed new productive zone. Describe the blowout prevention program, if any. Use additional sheets if necessary.

Propose to drill the well to a sufficient depth to evaluate the Morrow formation. After reaching TD, logs will be run and casing set if the evaluation is positive. Perforate, test and stimulate as necessary to establish production.

Acreage dedication is 320 acres; W/2 of Section 32.

Permit Expires 1 Year From Approval
Date Unless Drilling Underway

I hereby certify that the information given above is true and complete to the best of my knowledge and belief.

Signature:

Kim Stewart

Printed name:

Kim Stewart

Title:

Regulatory Analyst

Date:

05-29-01

Phone:

915/686-8235

OIL CONSERVATION DIVISION

Approved By:

Title:

Approval Date:

Expiration Date:

Conditions of Approval:

Attached: ☐

JP

DISTRICT I

P.O. Box 1980, Hobbs, NM 88241-1980

DISTRICT II

P.O. Drawer DD, Artesia, NM 88211-0719

DISTRICT III

1000 Rio Brazos Rd., Aztec, NM 87410

DISTRICT IV

P.O. Box 2088, Santa Fe, N.M. 87504-2088

OIL CONSERVATION DIVISION

P.O. Box 2088

Santa Fe, New Mexico 87504-2088

Form C-102

Revised February 10, 1994

Submit to Appropriate District Office

State Lease - 4 Copies

Fee Lease - 3 Copies

WELL LOCATION AND ACREAGE DEDICATION PLAT

☐ AMENDED REPORT

API Number 30-025-35569		Pool Code 79830	Pool Name La Rica Morrow; West
Property Code 21886	Property Name WAPITI "32" STATE COM		Well Number 2
OGRID No. 015742	Operator Name NEARBURG PRODUCING CO.		Elevation 3854'

Surface Location

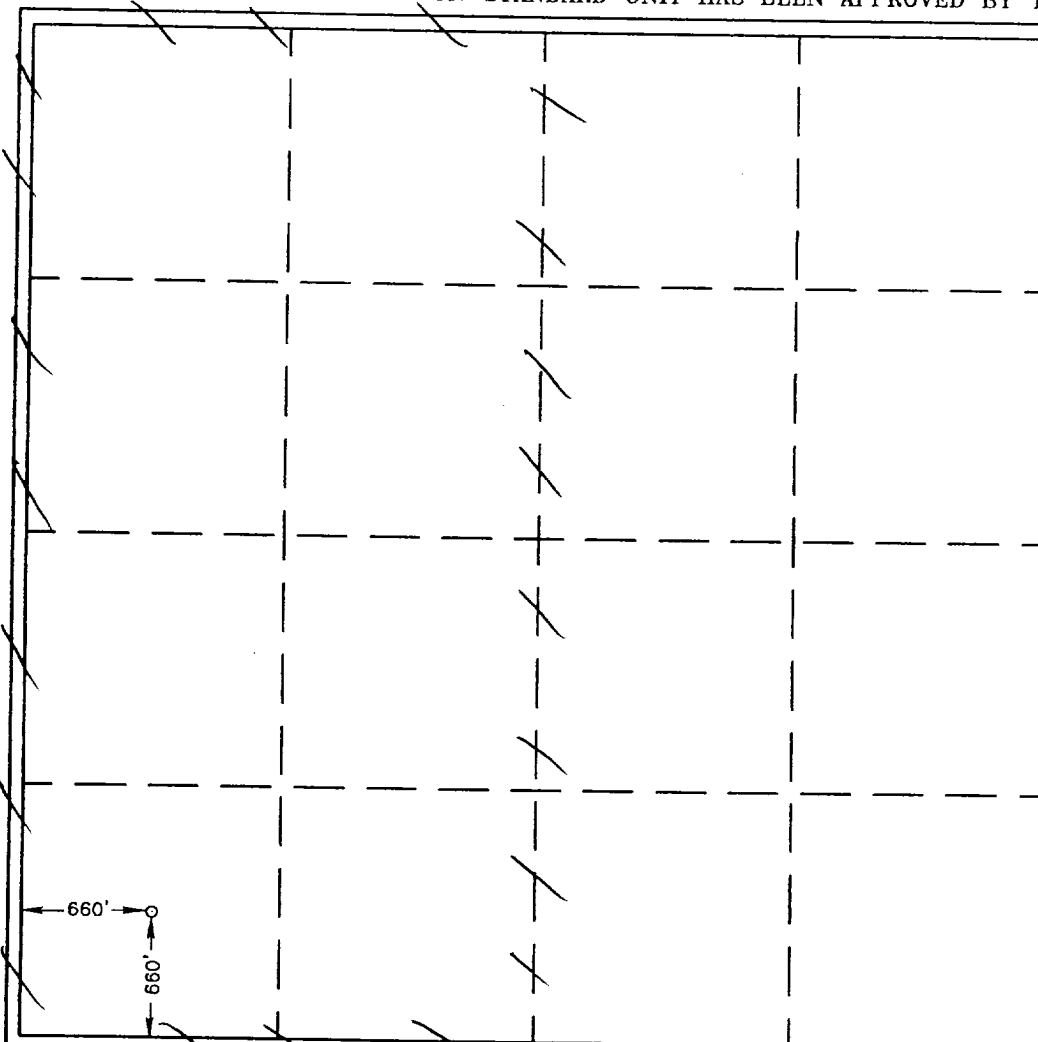
UL or lot No.	Section	Township	Range	Lot Idn	Feet from the	North/South line	Feet from the	East/West line	County
M	32	18-S	34-E		660	SOUTH	660	WEST	LEA

Bottom Hole Location If Different From Surface

UL or lot No.	Section	Township	Range	Lot Idn	Feet from the	North/South line	Feet from the	East/West line	County

Dedicated Acres	Joint or Infill	Consolidation Code	Order No.
320			

NO ALLOWABLE WILL BE ASSIGNED TO THIS COMPLETION UNTIL ALL INTERESTS HAVE BEEN CONSOLIDATED
OR A NON-STANDARD UNIT HAS BEEN APPROVED BY THE DIVISION



OPERATOR CERTIFICATION

I hereby certify the the information
contained herein is true and complete to the
best of my knowledge and belief.

Kim Stewart
Signature

Kim Stewart
Printed Name

Regulatory Analyst
Title

May 29, 2001
Date

SURVEYOR CERTIFICATION

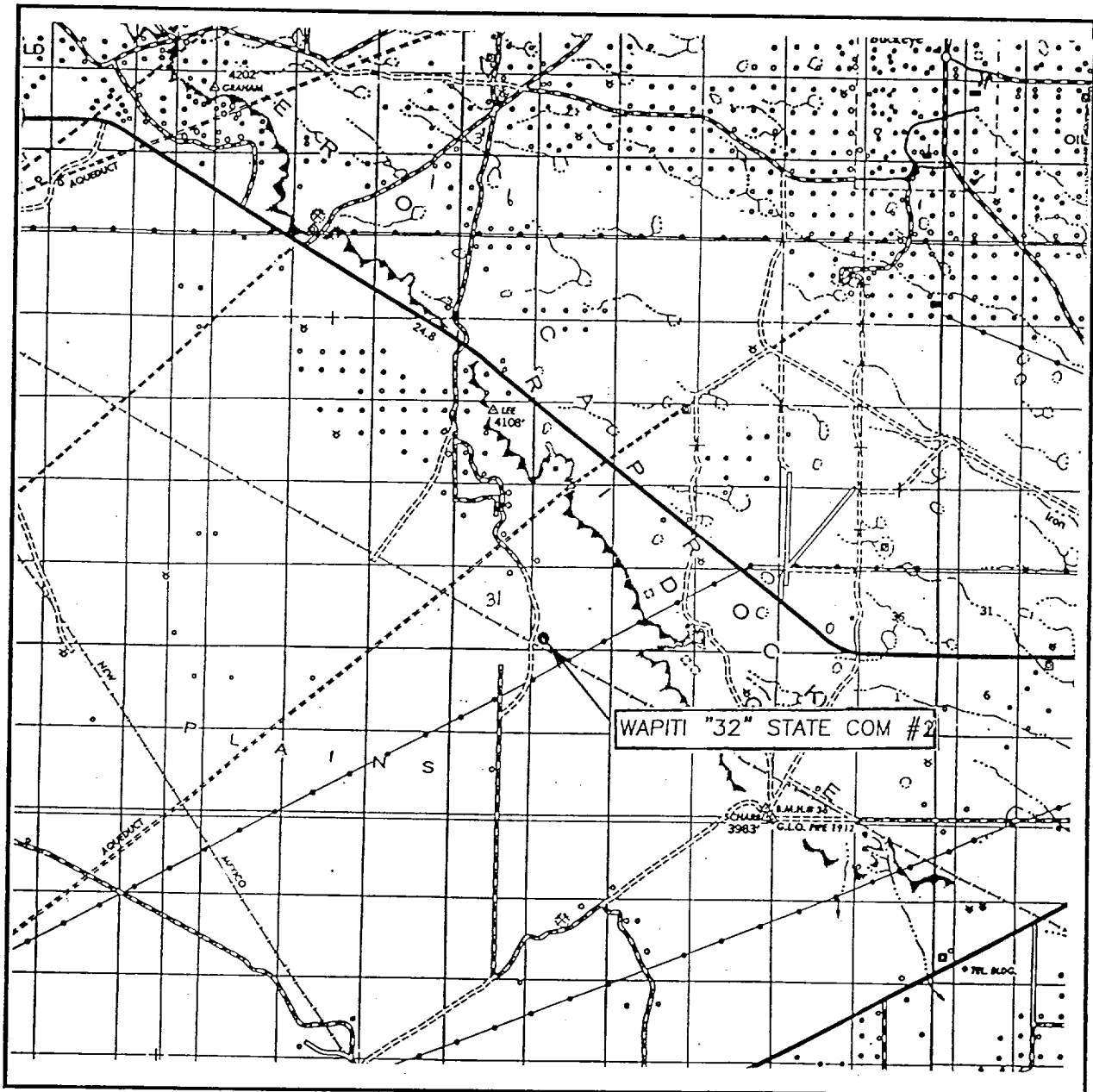
I hereby certify that the well location shown
on this plat was plotted from field notes of
actual surveys made by me or under my
supervision and that the same is true and
correct to the best of my belief.

MAY 15 2001
Date Surveyed
Signature & Seal of
Professional Surveyor
3239

Ronald J. Eidson
Signature
61-17-0589

Certificate No. RONALD J. EIDSON 3239
GARY EIDSON 12641

VICINITY MAP



SCALE: 1" = 2 MILES

SEC. 32 TWP. 18-S RGE. 34-E

SURVEY N.M.P.M.

COUNTY LEA

DESCRIPTION 660' FSL & 660' FWL

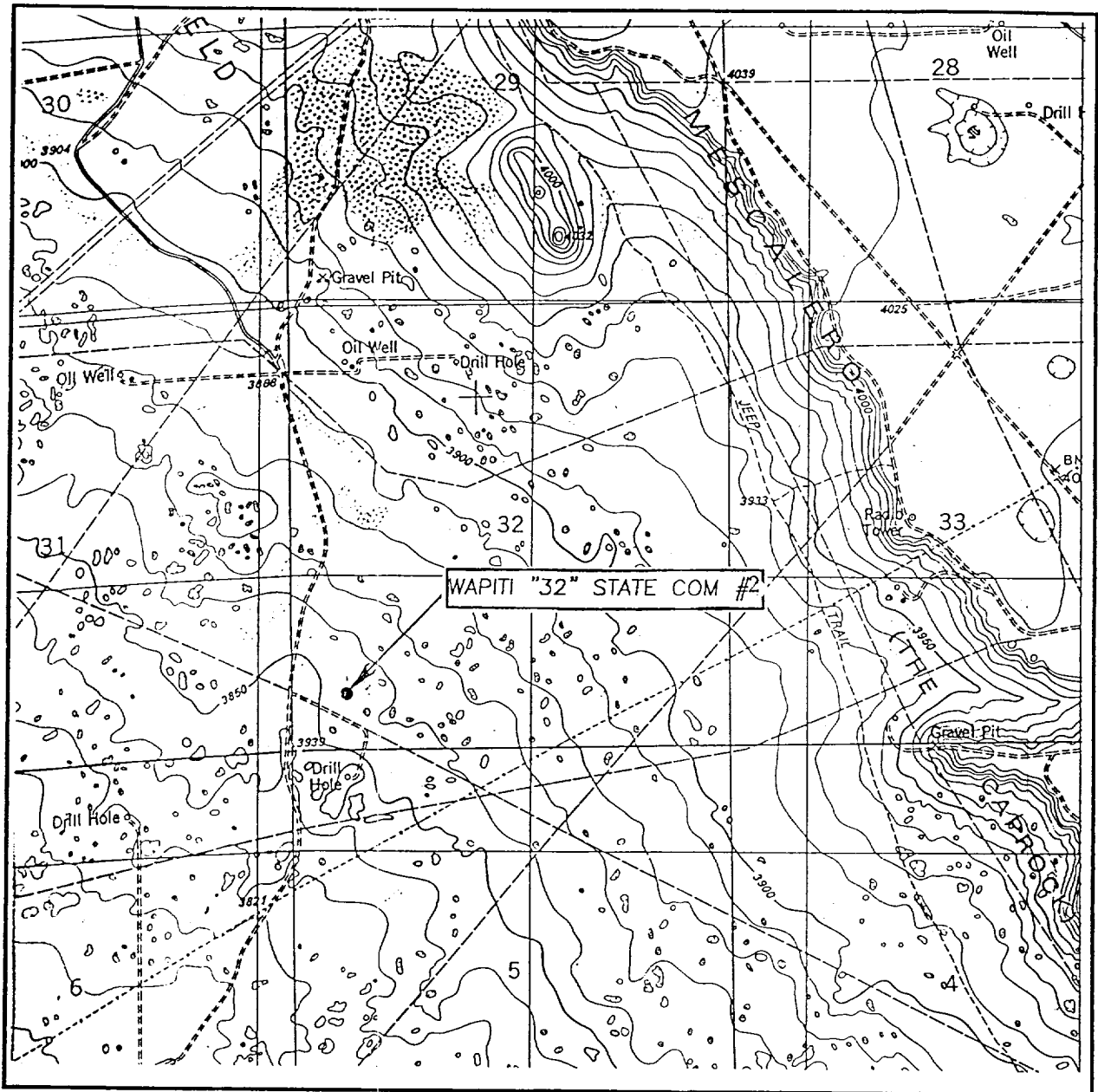
ELEVATION 3854'

OPERATOR NEARBURG PRODUCING COMPANY

LEASE WAPITI "32" STATE COM

JOHN WEST SURVEYING
HOBBS, NEW MEXICO
(505) 393-3117

LOCATION VERIFICATION MAP



SCALE: 1" = 2000'

CONTOUR INTERVAL: 10'
IRONHOUSE WELL, N.M.

SEC. 32 TWP. 18-S RGE. 34-E

SURVEY N.M.P.M.

COUNTY LEA

DESCRIPTION 660' FSL & 660' FWL

ELEVATION 3854'

OPERATOR NEARBURG PRODUCING COMPANY

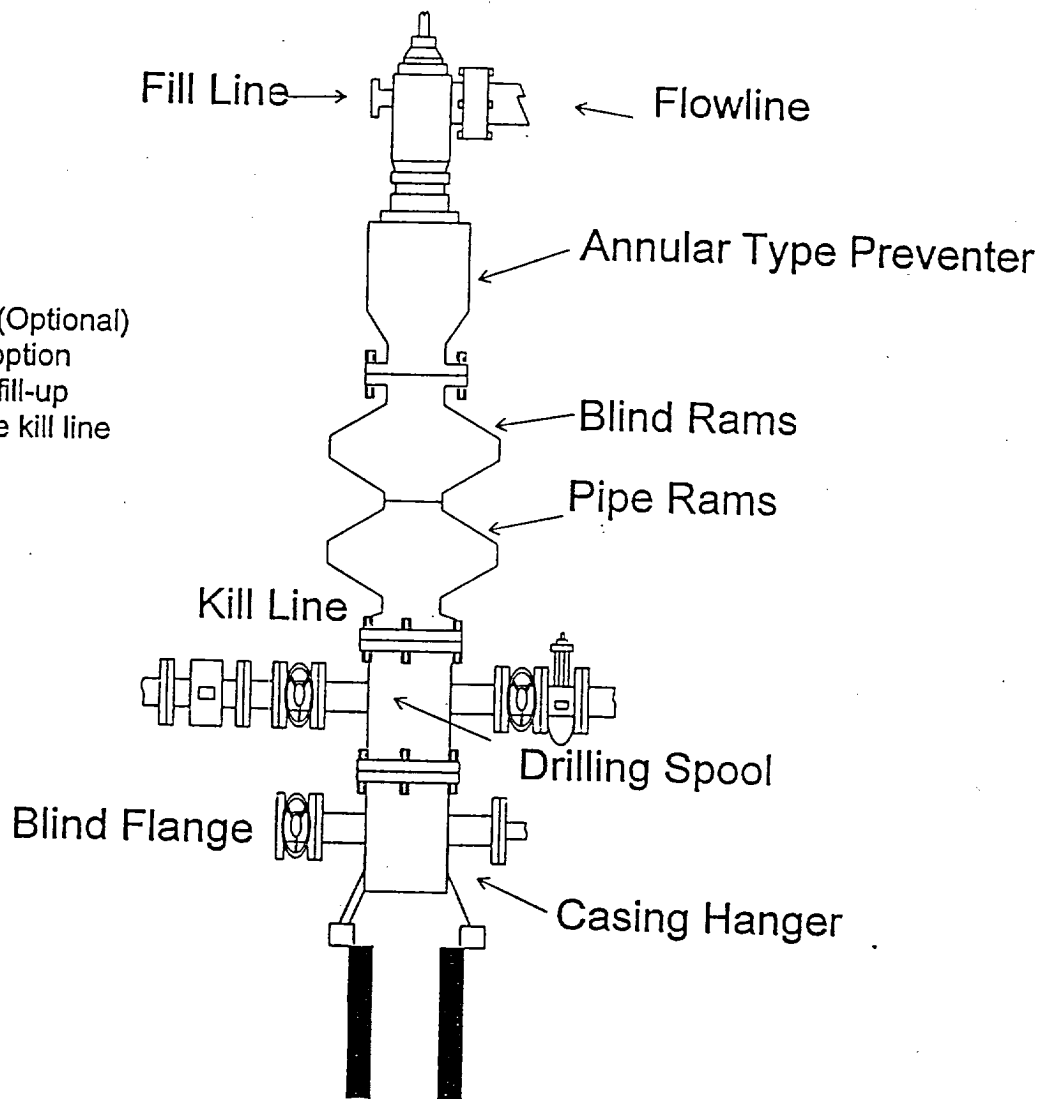
LEASE WAPITI "32" STATE COM

U.S.G.S. TOPOGRAPHIC MAP
IRONHOUSE WELL, N.M.

JOHN WEST SURVEYING
HOBBS, NEW MEXICO
(505) 393-3117

NEARBURG PRODUCING COMPANY
BOPE SCHEMATIC

Rotating Head (Optional)
Drilling Nipple option
must include a fill-up
line. Do not use kill line
for fill up.



900 Series

BARBURG PRODUCING COMPANY
CHOKE MANIFOLD
5M SERVICE

