

District I
1625 N. French Dr., Hobbs, NM 88240
District II
811 S. 1st Street, Artesia, NM 88210
District III
1000 Rio Brazos Rd., Aztec, NM 87410
District IV
2040 South Pacheco, Santa Fe, NM 87505

State of New Mexico
Energy, Minerals & Natural Resources

Form C-101
Revised March 17, 1999

Oil Conservation Division
2040 South Pacheco
Santa Fe, NM 87505

Submit to appropriate District Office
State Lease - 6 Copies
Fee Lease - 5 Copies

☐ AMENDED REPORT

APPLICATION FOR PERMIT TO DRILL, RE-ENTER, DEEPEN, PLUGBACK, OR ADD A ZONE

¹ Operator Name and Address PHILLIPS PETROLEUM COMPANY 4001 PENBROOK STREET, ODESSA, TX 79762		² OGRID Number 017643
		³ API Number 30- 025- 35573
⁴ Property Code 009112	⁵ Property Name LEAMEX	⁶ Well No. 614

⁷ Surface Location									
UL or lot no. C	Section 25	Township 17-S	Range 33-E	Lot. Idn	Feet from the 660	North/South Line NORTH	Feet from the 1940	East/West line WEST	County LEA

⁸ Proposed Bottom Hole Location If Different From Surface									
UL or lot no.	Section	Township	Range	Lot. Idn	Feet from the	North/South Line	Feet from the	East/West line	County

⁹ Proposed Pool 1 MALJAMAR (GRAYBURG-SAN ANDRES)					¹⁰ Proposed Pool 2				
----------------------------------------------------------------	--	--	--	--	-------------------------------	--	--	--	--

¹¹ Work Type Code N	¹² Well Type Code I	¹³ Cable/Rotary R	¹⁴ Lease Type Code S B-2118	¹⁵ Ground Level Elevation 4112'
¹⁶ Multiple NO	¹⁷ Proposed Depth 4,750'	¹⁸ Formation GRAYBURG/SA	¹⁹ Contractor PATTERSON DRLG.	²⁰ Spud Date T.B.D.

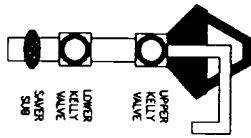
²¹ Proposed Casing and Cement Program					
Hole Size	Casing Size	Casing weight/foot	Setting Depth	Sacks of Cement	Estimated TOC
12-1/4"	8-5/8"	24#, J-55	1600'	745 SX	SURFACE
7-7/8"	5-1/2"	15.5#, J-55	4750'	1100 SX	SURFACE

²² Describe the proposed program. If this application is to DEEPEN or PLUG BACK, give the data on the present productive zone and proposed new productive zone. Describe the blowout prevention program, if any. Use additional sheets if necessary.
BOP schematic attached
APPROVAL for drilling ONLY -- CANNOT Inject until injection order is approved in Santa Fe.

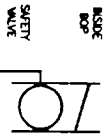
Permit Expires 1 Year From Approval
Date Unless Drilling Underway

²³ I hereby certify that the information given above is true and complete to the best of my knowledge and belief.		OIL CONSERVATION DIVISION	
Signature: <i>L. M. Sanders</i>		Approved by: <i>ORIGINAL SIGNATURE</i>	
Printed name: L. M. SANDERS		Title: <i>DISTRICT SUPERVISOR</i>	
Title: SUPERVISOR, REGULATION/PRORATION		Approval Date: <i>03/29/01</i>	
Date: 03/29/01		Expiration Date:	
Phone: 915/368-1488		Conditions of Approval:	
		Attached <input type="checkbox"/>	

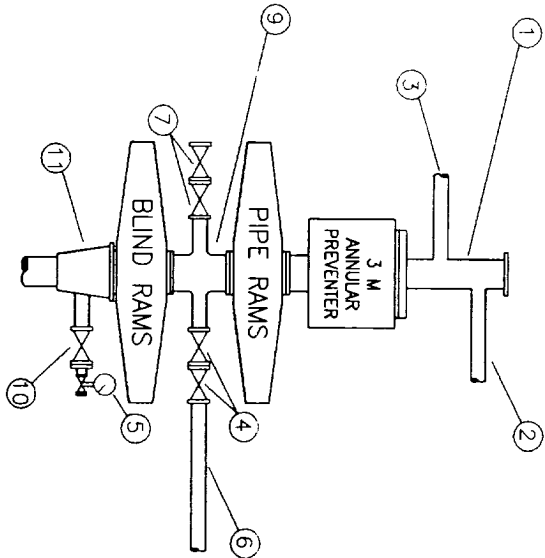
DRILLSTRING CONTROL DEVICES



ON DRILL FLOOR



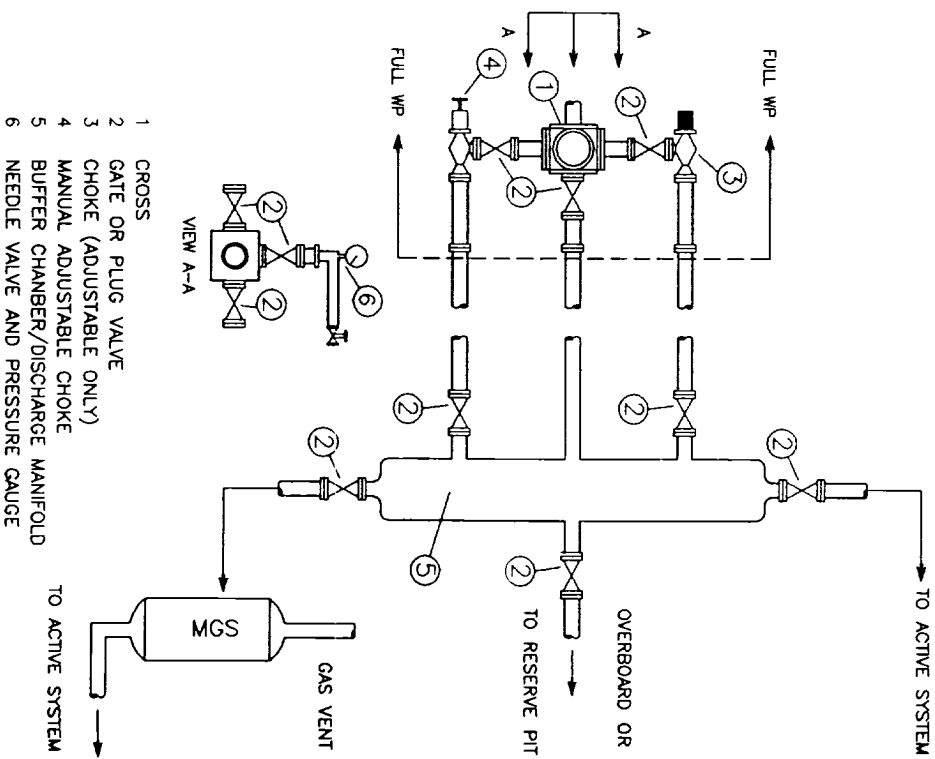
BOP STACK



- 1 BELL NIPPLE
- 2 FLOW LINE
- 3 FILL-UP LINE
- 4 3" FE PRESSURE-OPERATED CHOKE LINE VALVE
- 5 PRESSURE GAUGE
- 6 3" CHOKE LINE TO CHOKE MANIFOLD
- 7 3" FE GATE OR PLUG VALVES
- 8 2" KILL LINE
- 9 DRILLING SPOOL
- 10 2" SE OR FE GATE VALVE WITH NEEDLE VALVE
- 11 CASING HEAD HOUSING

CHOKE MANIFOLD

DISCHARGE MANIFOLD OPTIONAL FOR LAND RIGS



REMARK I
1625 N. French Dr., Hobbs, NM 88240

State of New Mexico
Energy, Minerals & Natural Resources Department

Form C-102
Revised August 18, 2006
Submit to Appropriate District Office
State Lease - 4 Copies
Fee Lease - 3 Copies

REMARK II
P.O. Drawer 88, Artesia, NM 88211-0719

REMARK III
1000 Nio Bruns Rd., Artesia, NM 87410

OIL CONSERVATION DIVISION
2040 South Pacheco
Santa Fe, NM 87505

REMARK IV
2040 South Pacheco, Santa Fe, NM 87505

☐ AMENDED REPORT

WELL LOCATION AND ACREAGE DEDICATION PLAT

API Number 30-025- <u>35573</u>	Pool Code 43329	Pool Name Maljamar (Grayburg-San Andres)
Property Code 009112	Property Name LEAMEX	Well Number 61W
OGHD No. 017643	Operator Name PHILLIPS PETROLEUM COMPANY	Elevation 4112

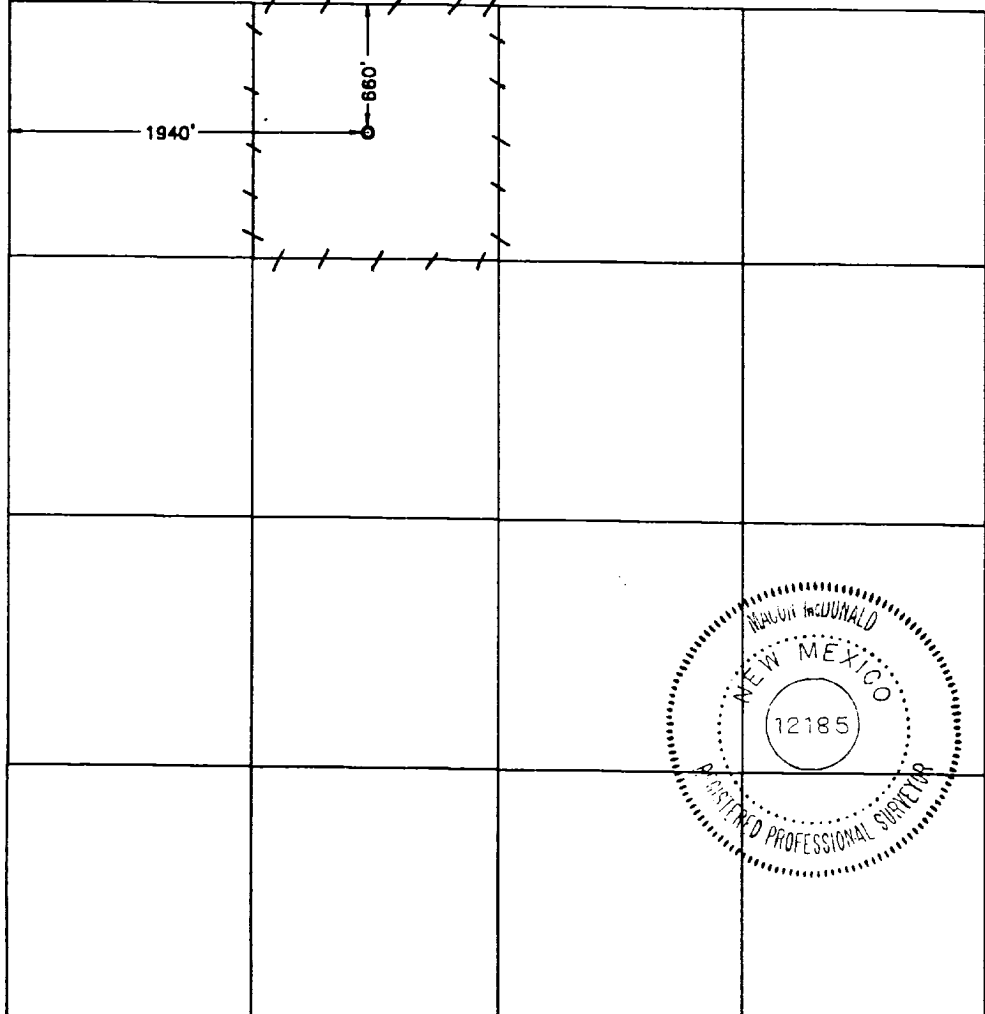

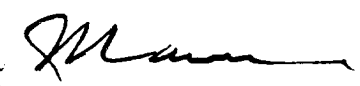
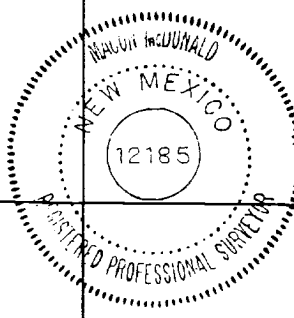
Surface Location

UL or Lot No. C	Section 25	Township 17 S	Range 33 E	Lot Idn	Feet from the 660	North/South line NORTH	Feet from the 1940	East/West line WEST	County LEA
--------------------	---------------	------------------	---------------	---------	----------------------	---------------------------	-----------------------	------------------------	---------------

Bottom Hole Location If Different From Surface

UL or Lot No.	Section	Township	Range	Lot Idn	Feet from the	North/South line	Feet from the	East/West line	County
Dedicated Acres <u>40</u>	Joint or Infill	Consolidation Code	Order No.						

NO ALLOWABLE WILL BE ASSIGNED TO THIS COMPLETION UNTIL ALL INTERESTS HAVE BEEN CONSOLIDATED OR A NON-STANDARD UNIT HAS BEEN APPROVED BY THE DIVISION

	OPERATOR CERTIFICATION I hereby certify that the information contained herein is true and complete to the best of my knowledge and belief.  Signature L. M. Sanders Printed Name Supv., Regulation/ Title Proration March 29, 2001 Date
	SURVEYOR CERTIFICATION I hereby certify that the well location shown on this plat was plotted from field notes of actual surveys made by me or under my supervision and that the same is true and correct to the best of my belief. March 15, 2001 Date Surveyed Signature & Seal of Professional Surveyor  W.O. Num. 2001-0331-S Certificate No. MACON McDONALD 12185
	

ABOVE DATE DOES NOT
INDICATE WHEN
CONFIDENTIAL LOGS
WILL BE RELEASED

21F

5/21/01