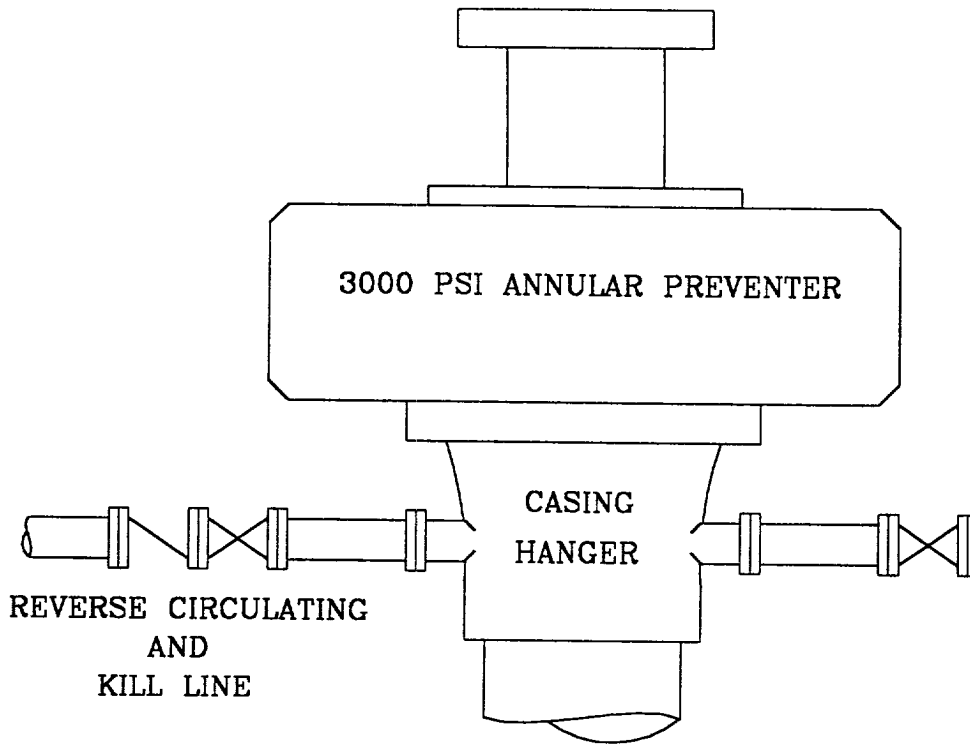
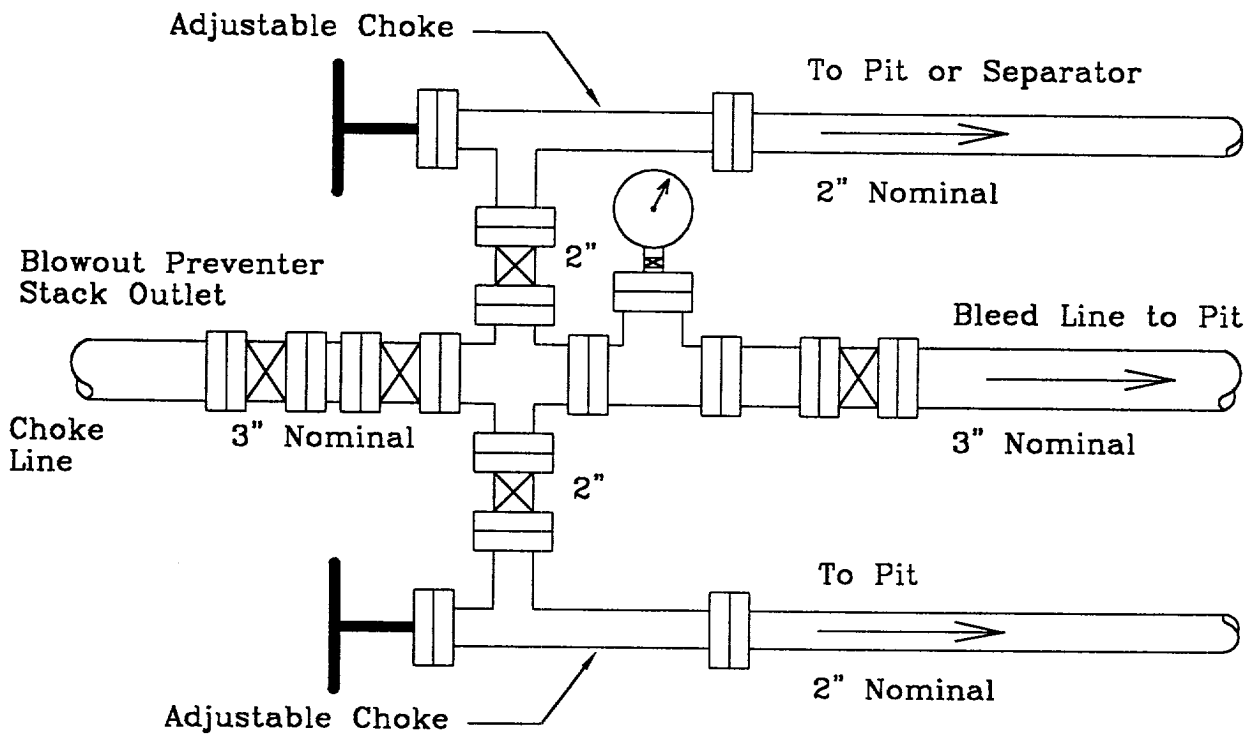


IN IMMEDIATE HOLE SECTION



3000 PSI WORKING PRESSURE



3000 PSI WORKING PRESSURE

Location: NW/4 SE/4 Sec. 7, T-19S, R-32E Lea County, NM	HAWKEYE 7 FEDERAL NO. 2 BLOWOUT PREVENTER AND CHOKE MANIFOLD		4/20/01
		Scale: None	

2001 MAY -9 AM 8:47
BUREAU OF LAND MGMT
ROSWELL OFFICE

RECEIVED

03
MAY 9 2001
FBI