

District I
1625 N. French Dr., Hobbs, NM 88240
District II
811 S. 1st Street, Artesia, NM 88210
District III
1000 Rio Brazos Rd., Aztec, NM 87410
District IV
2040 South Pacheco, Santa Fe, NM 87505

State of New Mexico
Energy, Minerals & Natural Resources

Form C-101
Revised March 17, 1999

Oil Conservation Division
2040 South Pacheco
Santa Fe, NM 87505

Submit to appropriate District Office
State Lease - 6 Copies
Fee Lease - 5 Copies

☐ AMENDED REPORT

APPLICATION FOR PERMIT TO DRILL, RE-ENTER, DEEPEN, PLUGBACK, OR ADD A ZONE

¹ Operator Name and Address Texaco Exploration & Production 500 N. Loraine Midland, Texas 79702		² OGRID Number 022351
		³ API Number 30-025-35686
⁴ Property Code 11124	⁵ Property Name VACUUM GRAYBURG SAN ANDRES UNIT	⁶ Well No. 133

⁷ Surface Location

UL or lot no.	Section	Township	Range	Lot. Idn	Feet from the	North/South Line	Feet from the	East/West line	County
E	1	18-S	34-E		2590'	NORTH	1270'	WEST	LEA

⁸ Proposed Bottom Hole Location If Different From Surface

UL or lot no.	Section	Township	Range	Lot. Idn	Feet from the	North/South Line	Feet from the	East/West line	County
⁹ Proposed Pool 1 VACUUM GRABURG SAN ANDRES					¹⁰ Proposed Pool 2				

¹¹ Work Type Code N	¹² Well Type Code INJ	¹³ Cable Rotary ROTARY	¹⁴ Lease Type Code S	¹⁵ Ground Level Elevation 3992'
¹⁶ Multiple NO	¹⁷ Proposed Depth 4800'	¹⁸ Formation SAN ANDRES	¹⁹ Contractor	²⁰ Spud Date 9/20/01

²¹ Proposed Casing and Cement Program

Hole Size	Casing Size	Casing weight/foot	Setting Depth	Sacks of Cement	Estimated TOC
12 1/4"	8 5/8"	24#	1550'	600	CIRCULATE
7 7/8"	5 1/2"	15.5#	4800'	1000	CIRCULATE

²² Describe the proposed program. If this application is to DEEPEN or PLUG BACK, give the data on the present productive zone and proposed new productive zone. Describe the blowout prevention program, if any. Use additional sheets if necessary.

CEMENTING PROGRAM:

SURFACE CASING: 400 sacks Class C w/4% Gel, 2% CaCl₂ (13.5 PPG, 1.74 CF/S, 9.11 GW/S). F/B 200 SACKS CLASS C w/2% CaCl₂ (14.8 PPG, 1.34 CF/S, 6.31 GW/S).

PRODUCTION CASING: 800 sacks 35/65 Poz Class H w/6% Gel, 5% Salt, 1/4# FC (12.4 PPG, 2.14 CF/S, 11.95 GW/S). F/B 200 sacks 50/50 Poz Class H w/2% Gel, 5% Salt, 1/4# FC (14.2 PPG, 1.35 CF/S, 6.30 GW/S).

NOTE: THIS IS A REPLACEMENT INJECTION WELL. THE WELL IS IN A PROJECT AREA.

²³ I hereby certify that the information given above is true and complete to the best of my knowledge and belief.

Signature:

Printed name: A. Phil Ryan

Title: Commission Coordinator

Date: 9/4/01

Phone: (915) 688-4606

OIL CONSERVATION DIVISION

Approved by:

Title:

Approval Date:

Expiration Date:

Conditions of Approval:

Attached ☐

Permit Expires 1 Year From Approval
Date Unless Drilling Underway

DISTRICT I
P. O. Box 1980, Hobbs, NM 88240

DISTRICT II
P. O. Drawer DD, Artesia, NM 88210

DISTRICT III
1000 Rio Brazos Rd., Aztec, NM 87410

DISTRICT IV
P. O. Box 2088, Santa Fe, NM 87504-2088

State of New Mexico
Energy, Minerals and Natural Resources Department

Form C-102
Revised February 10, 1994

Instructions on back

Submit to Appropriate District Office

State Lease-4 copies
Fee Lease-3 copies

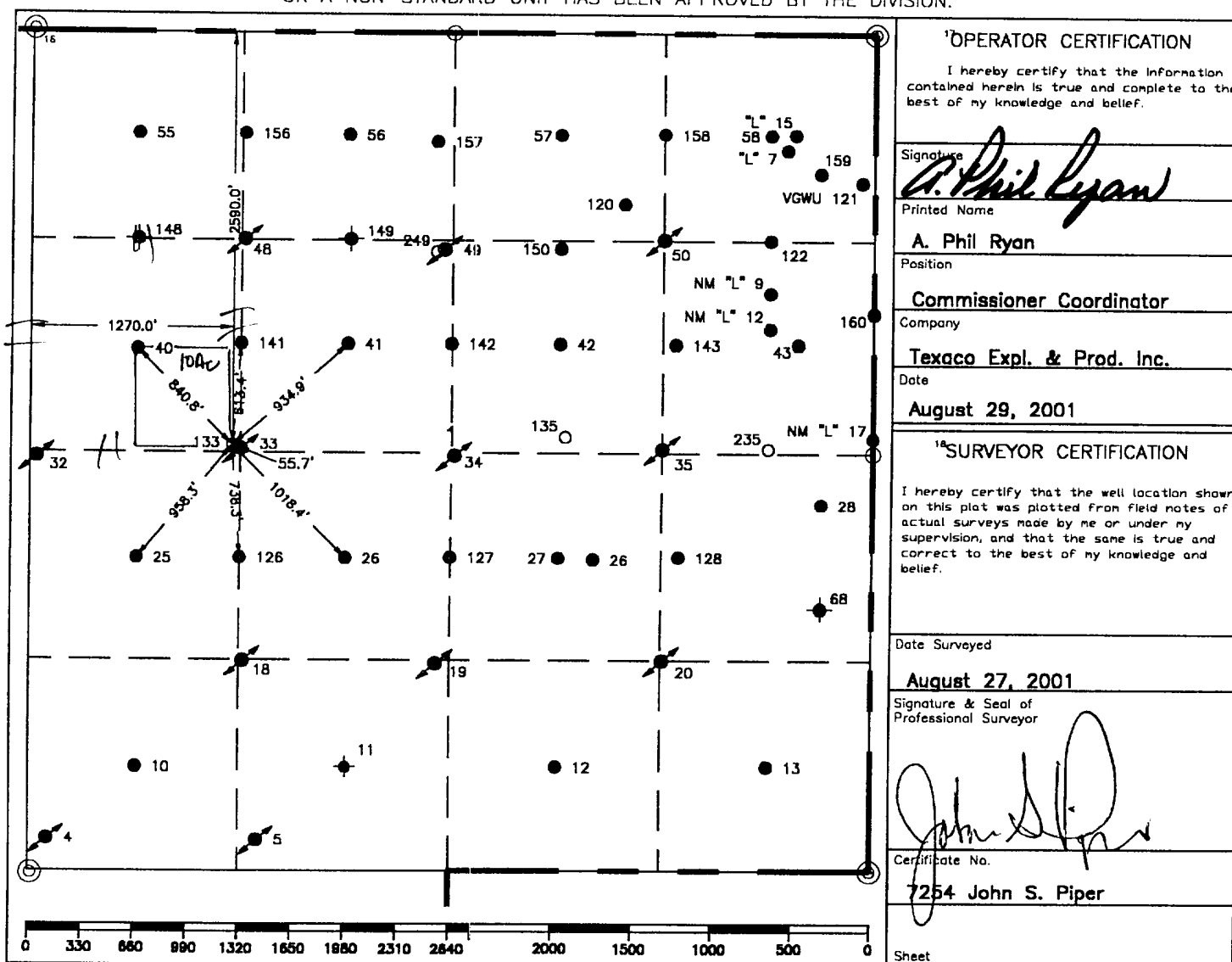
OIL CONSERVATION DIVISION
PO Box 2088
Santa Fe, NM 87504-2088

WELL LOCATION AND ACREAGE DEDICATION PLAT

☐ AMENDED REPORT

¹ API Number 30-025-35686		² Pool Code 62180		³ Pool Name Vacuum Grayburg San Andres					
⁴ Property Code 1124		⁵ Property Name Vacuum Grayburg San Andres Unit			⁶ Well Number 133				
⁷ GRID No. 22351		⁸ Operator Name TEXACO EXPLORATION & PRODUCTION, INC.			⁹ Elevation 3992'				
¹⁰ Surface Location									
UL or lot no. E	Section 1	Township 18-S	Range 34-E	Lot Idn 2590'	North/South line North	Feet from the 1270'	East/West line West	⁷ County Lea	
¹¹ Bottom Hole Location If Different From Surface									
UL or lot no.	Section	Township	Range	Lot Idn	Feet from the	North/South line	Feet from the	East/West line	⁷ County
¹² Dedicated Acres 10 40		¹³ Joint or Infill		¹⁴ Consolidation Code		¹⁵ Order No.			

NO ALLOWABLE WILL BE ASSIGNED TO THIS COMPLETION UNTIL ALL INTERESTS HAVE BEEN CONSOLIDATED
OR A NON-STANDARD UNIT HAS BEEN APPROVED BY THE DIVISION.



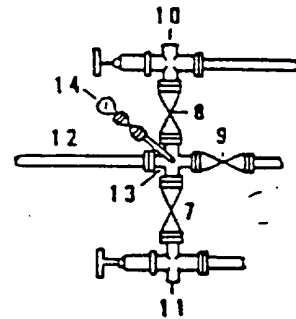
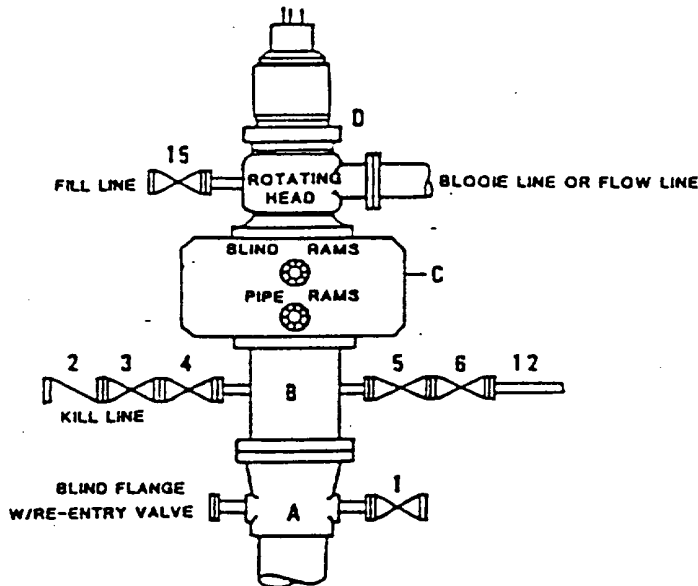
○ = Staked Location ● = Producing Well ↗ = Injection Well ⊕ = Water Supply Well ⊛ = Plugged & Abandon Well
⊙ = Found Section Corner, 2 or 3" Iron Pipe & GLO B.C. ○ = Found 1/4 Section Corner, 1" Iron Pipe & GLO B.C.

ADDITIONAL INFORMATION ON THE LOCATION

State Plane Coordinates		
Northing 647406.47 (1927=647341.53)	Easting 791807.10 (1927=750628.06)	
Latitude 32°46'37.570" (1927=32°46'37.125")	Longitude 103°31'06.236" (1927=103°31'04.448")	
Zone North American Datum	Combined Grid Factor	Coordinate File
East 1983	0.99979145	Buckeye.cr5
Drawing File	Field Book	
VGSAU133.dwg	Lea County 20, Pg. 57	

**DRILLING CONTROL
CONDITION II-B 3000 WP
FOR AIR DRILLING OR
WHERE NITROGEN OR AIR BLOWS ARE EXPECTED**

H₂S TRIM REQUIRED
YES _____ NO X



DRILLING CONTROL

MATERIAL LIST - CONDITION II - B

- | | |
|----------------|---|
| A | Texaco Wellhead |
| B | 3000# W.P. drilling spool with a 2" minimum flanged outlet for kill line and 3" minimum flanged outlet for choke line. |
| C | 3000# W.P. Dual ram type preventer, hydraulic operated with 1" steel, 3000# W.P. control lines (where sub-structure height is adequate, 2 - 3000# W.P. single ram type preventers may be utilized). |
| D | Rotating Head with fill up outlet and extended Blooe Line. |
| 1,3,4,
7,8, | 2" minimum 3000# W.P. flanged full opening steel gate valve, or Halliburton Lo Torc Plug valve. |
| 2 | 2" minimum 3000# W.P. back pressure valve. |
| 5,6,9 | 3" minimum 3000# W.P. flanged full opening steel gate valve, or Halliburton Lo Torc Plug valve. |
| 12 | 3" minimum schedule 80, Grade "B", seamless line pipe. |
| 13 | 2" minimum x 3" minimum 3000# W.P. flanged cross. |
| 10,11 | 2" minimum 3000# W.P. adjustable choke bodies. |
| 14 | Cameron Mud Gauge or equivalent (location optional in choke line). |
| 15 | 2" minimum 3000# W.P. flanged or threaded full opening steel gate valve, or Halliburton Lo Torc Plug valve. |



TEXACO, INC.
MIDLAND DIVISION
MIDLAND, TEXAS



SCALE	DATE	EST. NO.	DRG. NO.
DRAWN BY			
CHECKED BY			
APPROVED BY			

EXHIBIT C